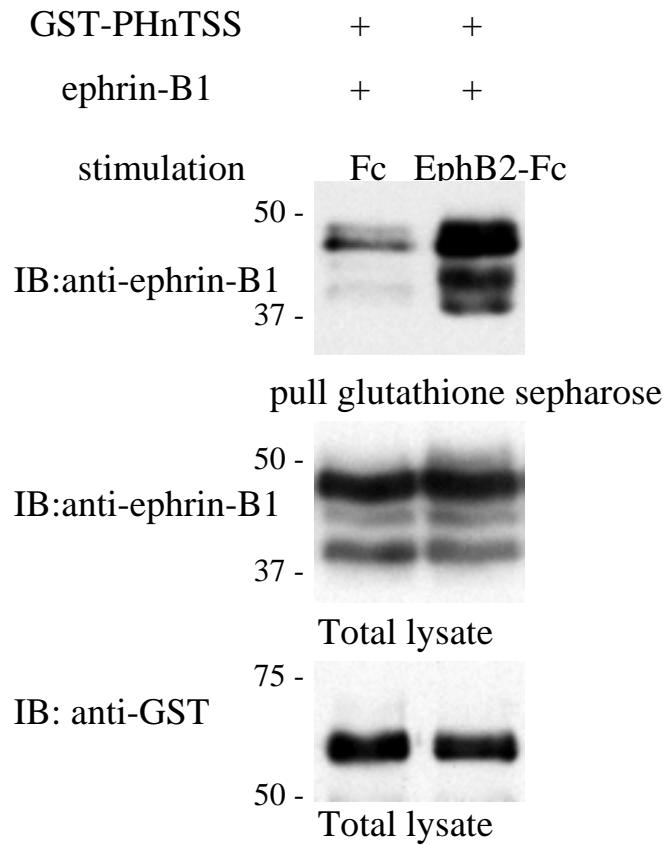
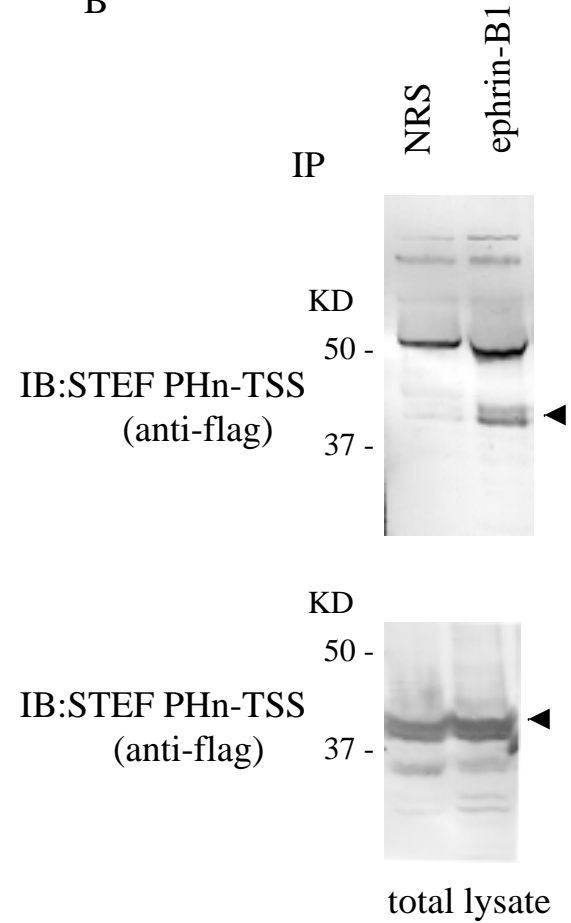


Suppl.3

A



B



Supplementary information 3

(A) The association of Tiam1 with ephrin-B1 is increased by the stimulation of EphB2-Fc. GST-tagged PHnTSS fragment of Tiam1 and ephrin-B1 were transiently expressed in 293T cells. After stimulation of transfected cell with preclustered EphB2-Fc (4 μ g/ml) for 15 min, cells were lysed for affinity precipitation of GST-PHnTSS with glutathione sepharose. Co-precipitants were separated by SDS-PAGE, and immunoblotted with anti-ephrin-B1. Expressions of ephrin-B1 and PHnTSS fragment of Tiam1 are shown at the bottom.

(B) Ephrin-B1 associates with PHnTSS domain of STEF. 293T cells were transfected with plasmids encoding ephrin-B1 and flag-tagged PHnTSS domain of STEF. Cell lysate were immunoprecipitated with anti ephrin-B1 (C18) antibody or normal rabbit serum (NRS) as indicated, and then, immunoblotted with anti-flag antibody. Co-precipitated PHnTSS of STEF is indicated by an arrowhead.