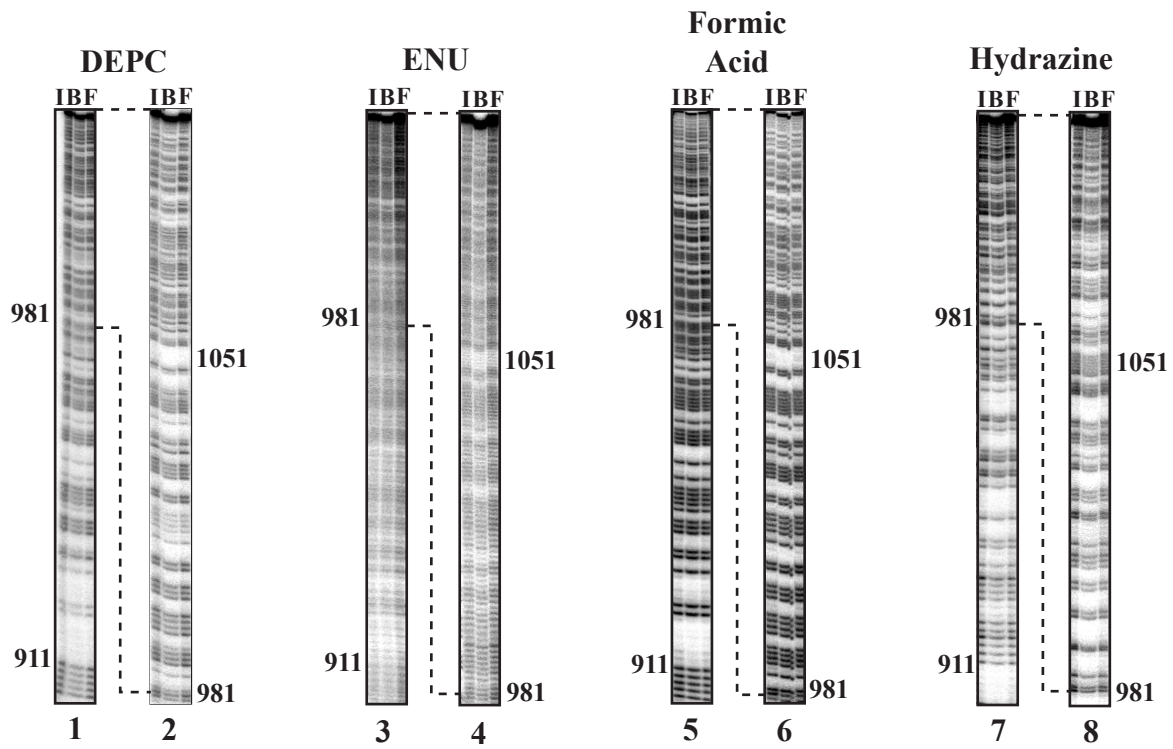


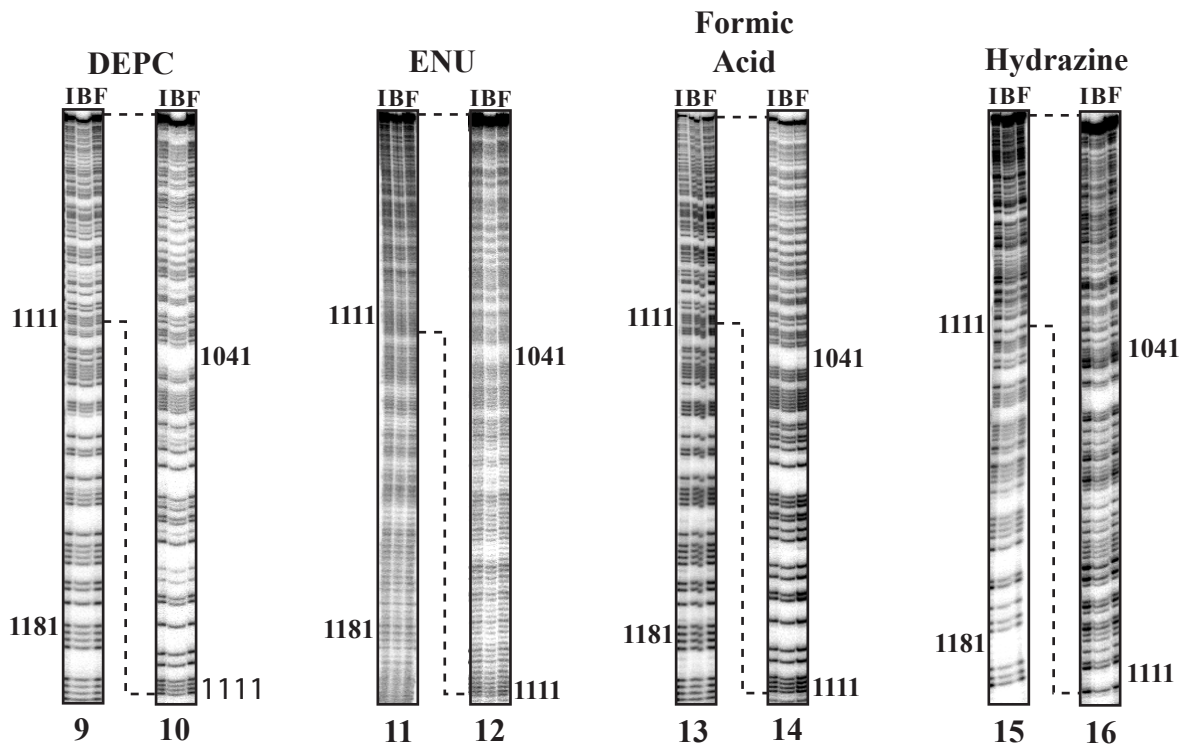
## Supplementary Figure 2

Chemical modification interference and missing contact analysis of DmORC-ori- $\beta$  complexes. Ori- $\beta$  DNA was end-labeled on the upper strand (lanes 1-8) or lower strand (lanes 9-16), chemically modified as indicated, and subjected to EMSA using rDmORC. Unbound DNA (“free”, F) and DNA from rDmORC-DNA complexes (“bound”, B) were isolated from the gel, subjected to modification-specific chemical cleavage and analyzed by denaturing gel-electrophoresis. As a control, modified input DNA (I) was analyzed in parallel. Gel-electrophoretic analysis of cleavage products was carried for 2 hours (lanes 1, 3, 5, 7, 9, 11, 13, 15) or 5 hours (lanes 2, 4, 6, 8, 10, 12, 14, 16) to resolve small and large DNA fragments, respectively. DEPC = diethyl-pyrocabonate; ENU = N-nitroso-N-ethylurea. Numbers indicate base pair positions relative to start codon adenine of the s18 ORF. Dashed brackets correlate the positions of DNA fragments within gels run for 2 hours and 5 hours, respectively.

Upper strand



Lower strand



I = Input  B = Bound  F = Free