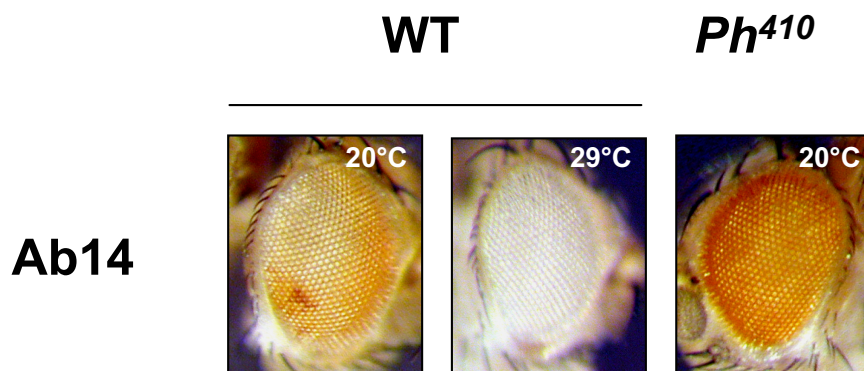


Fig. S3: Effects of temperature and of the *Ph⁴¹⁰* mutation on mini-*white* expression in Ab-*Fab* or Midi-*Fab* lines:

The top left and top center panels show the effect of growth temperature in Ab14 males. Males raised at 20°C are variegated, while at 29°C, the eye colour of Ab14 males is white and no patch of eye pigmentation can be seen. The top-right panel shows derepression of mini-*white* expression in Ab14 males in a *Ph⁴¹⁰* mutant background at 20°C.

The bottom panel shows the effect of temperature in a Midi-*Fab* line. At 29°C, mini-*white* becomes strongly repressed.

Effect of temperature and of *Ph*⁴¹⁰ background on mini-*white* expression in Ab14 line



Effect of temperature on Midi12.1 line

