

Web appendix

Figure S1. Gender distribution of patients according to age at start of antiretroviral therapy



Figure S2. Mortality and loss to follow-up (LTFU) rates with 95% confidence intervals per calendar year of antiretroviral therapy start.

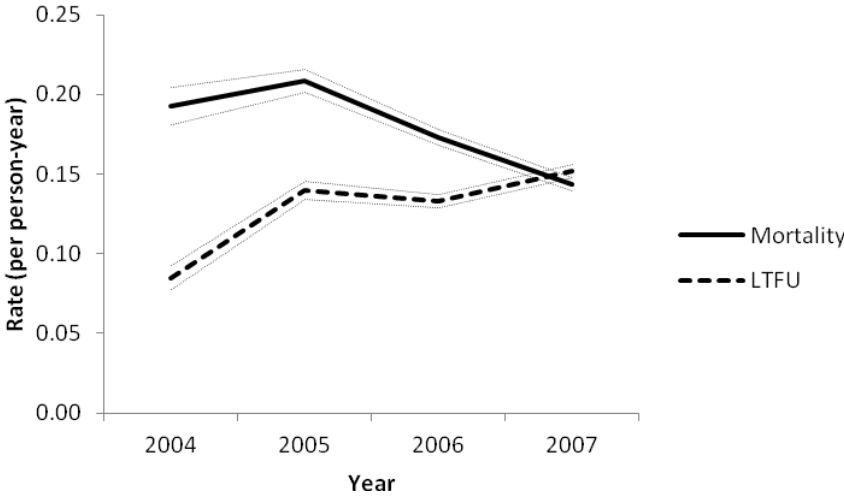
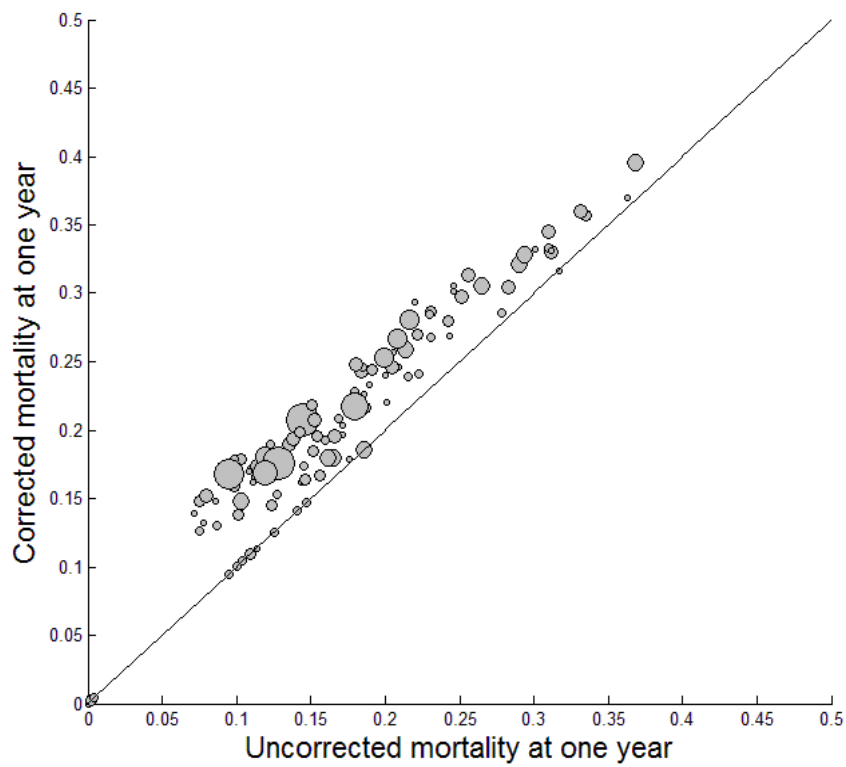


Figure S3. Mortality corrected for loss to follow-up by clinic.



Clinics with at least 100 patients are shown. Uncorrected mortality is calculated by censoring patients lost to follow-up, while the corrected mortality is a weighted average of the observed mortality in patients not lost to follow-up, and the estimated mortality in patients lost to follow-up. See www.iedea.org and Egger et al [22] for details. The size of each circle is proportional to the number of patients treated in the clinic.