

Supporting Information

Quasi-Biomimetic Ring Contraction Catalyzed by a Cysteine-Based Nucleophile:
Total Synthesis of Sch-642305, Some Analogs and their Putative anti-HIV
Activities

Alpay Dermenci,^a Philipp S. Selig,^a Robert A. Domaoal,^b Karen S. Anderson,^b Krasimir A.
Spasov,^b Scott J. Miller^{a,*}

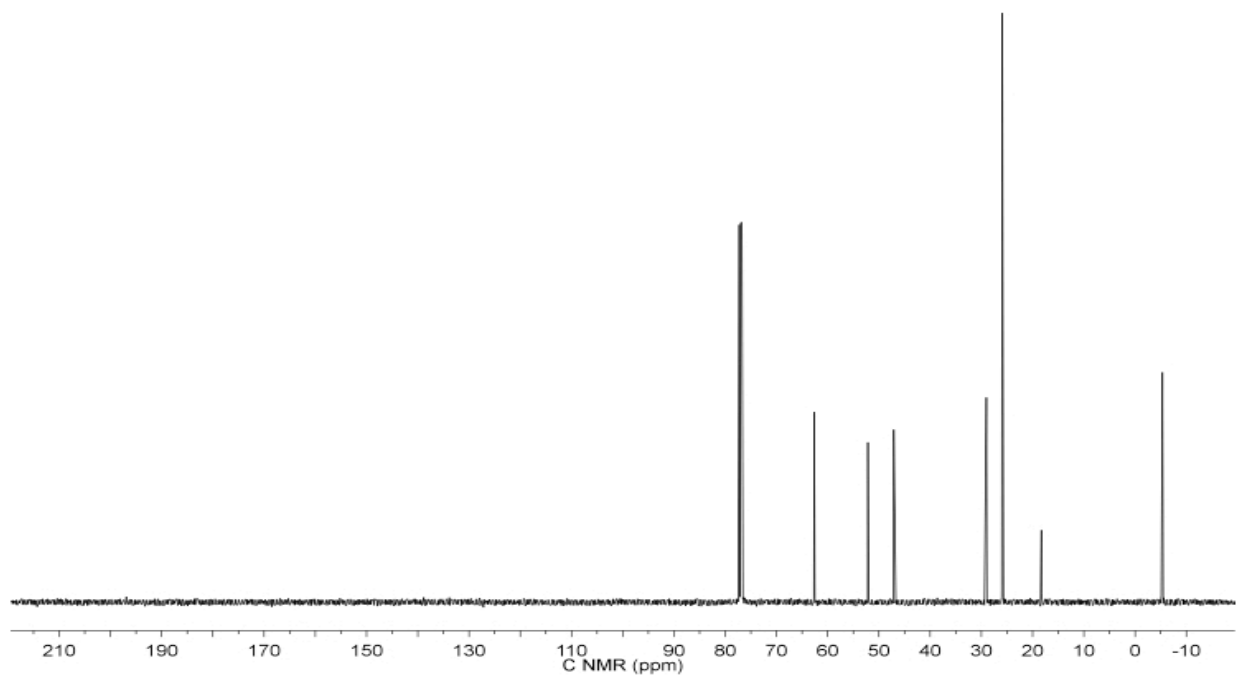
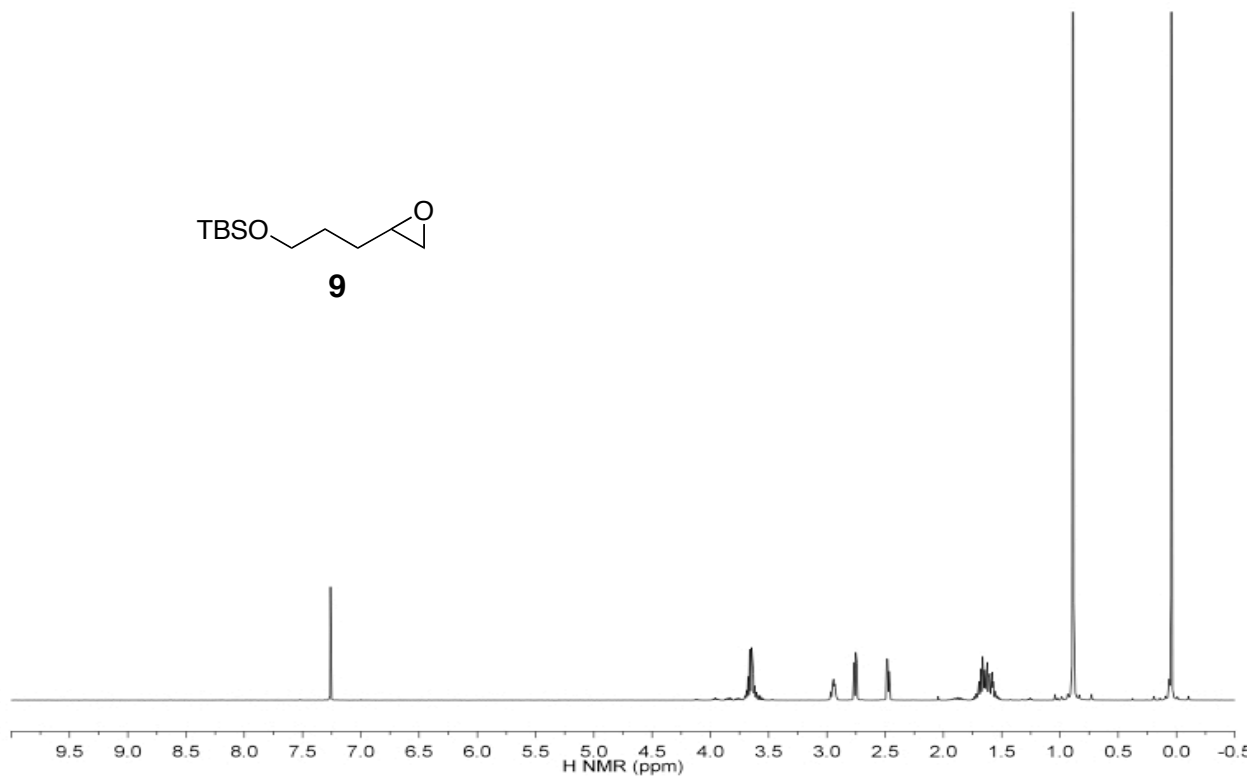
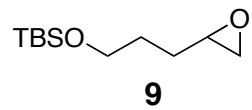
^a*Department of Chemistry, Yale University, P.O. Box 208107, New Haven, CT 06520-8107*

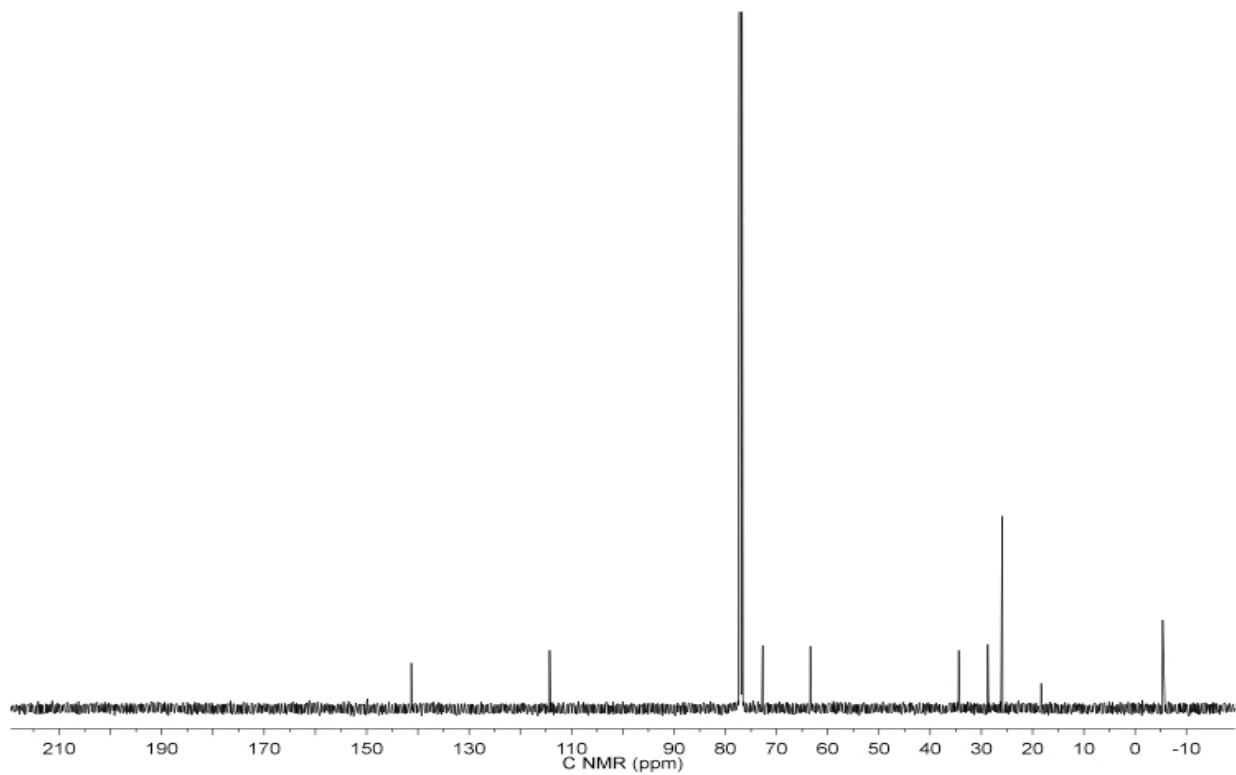
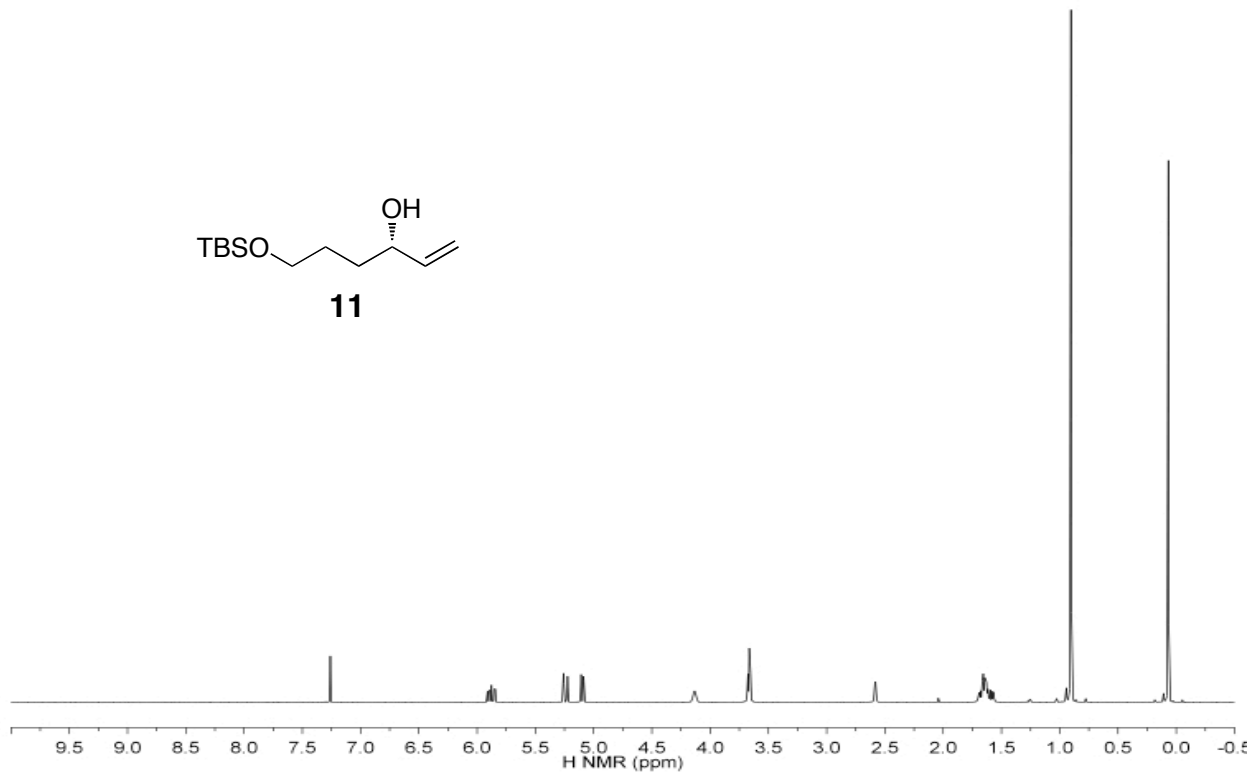
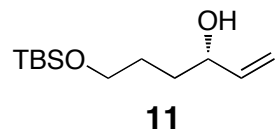
^b*Department of Pharmacology, Yale University School of Medicine, 333 Cedar Street, SHM
B350B, New Haven, CT 06520*

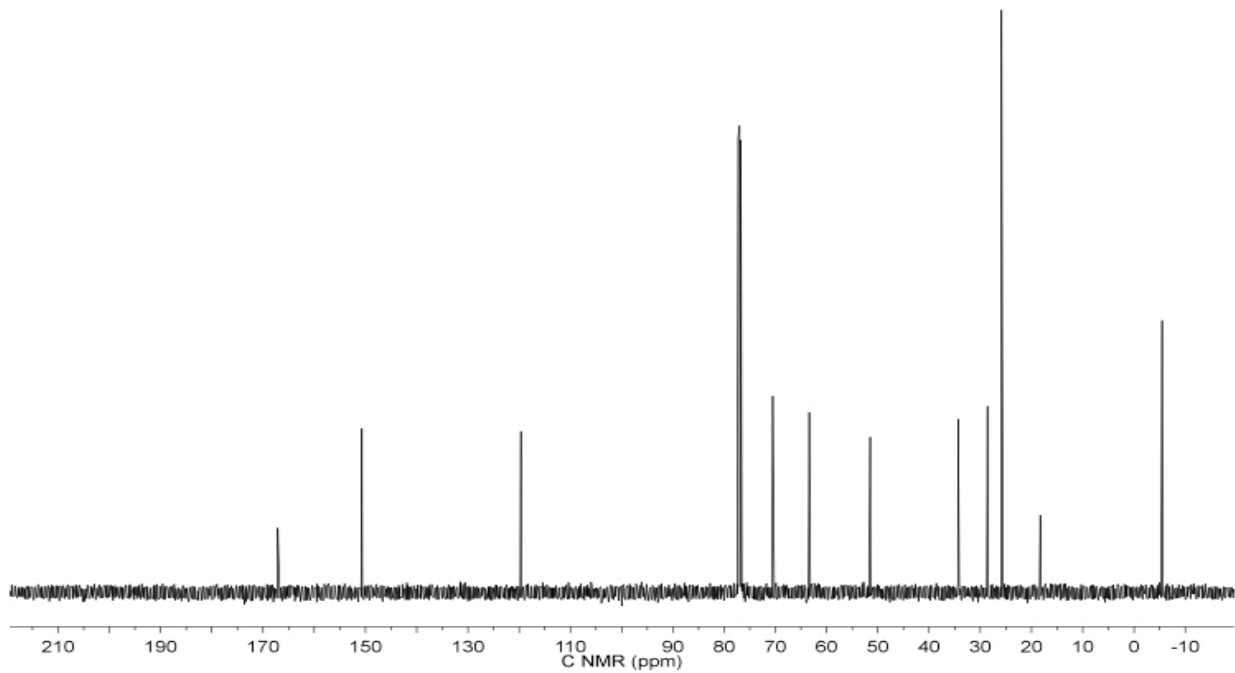
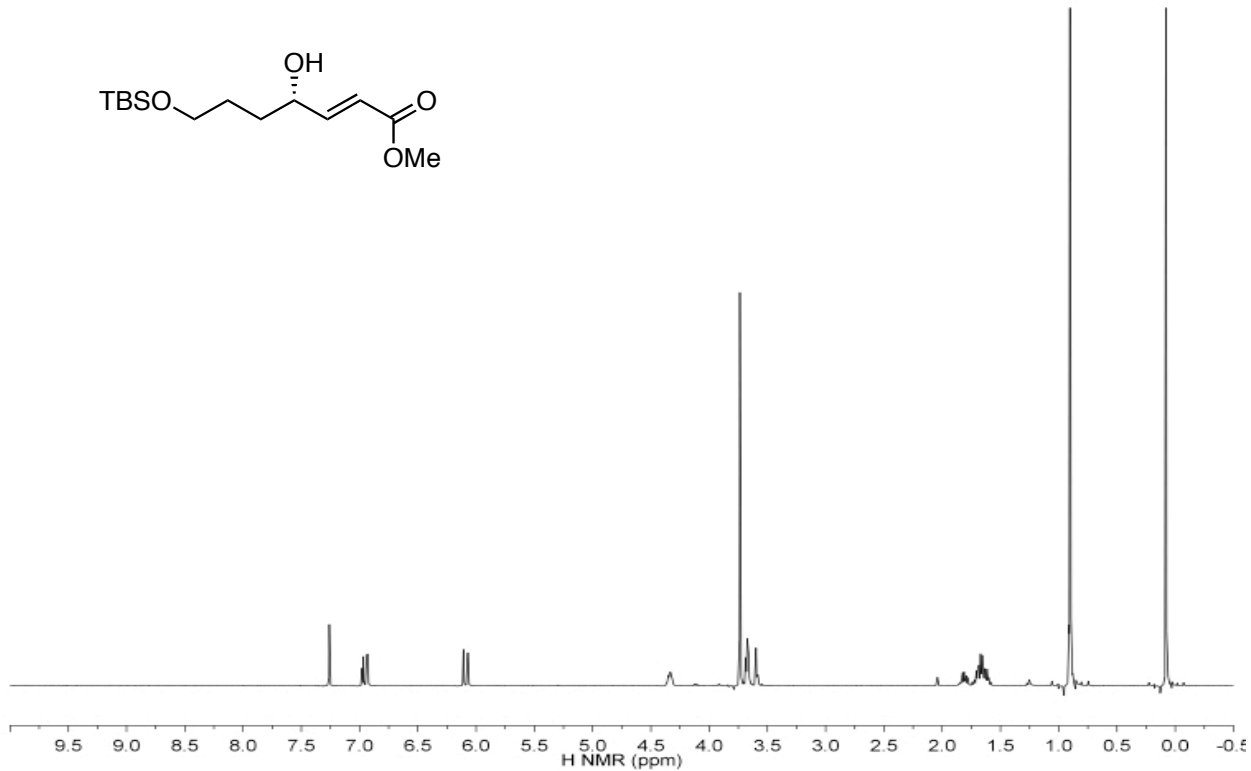
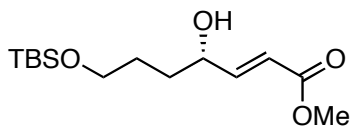
Supporting Information

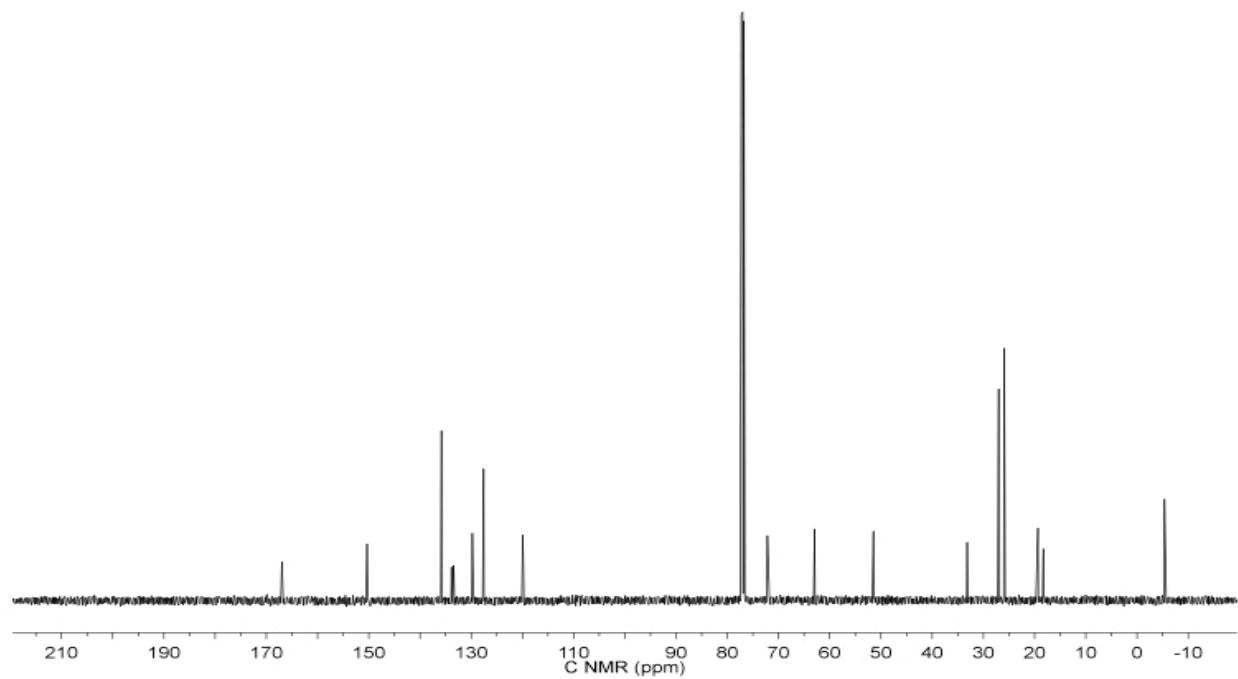
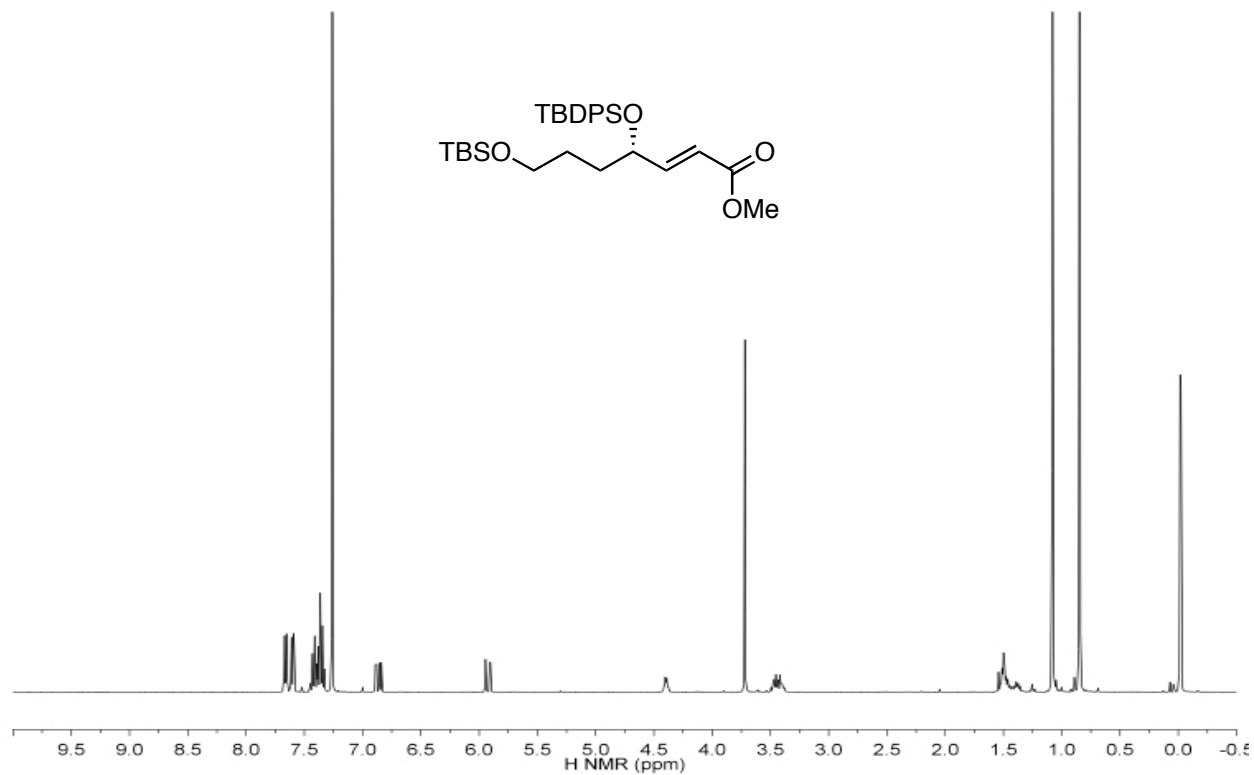
V. Spectral Data

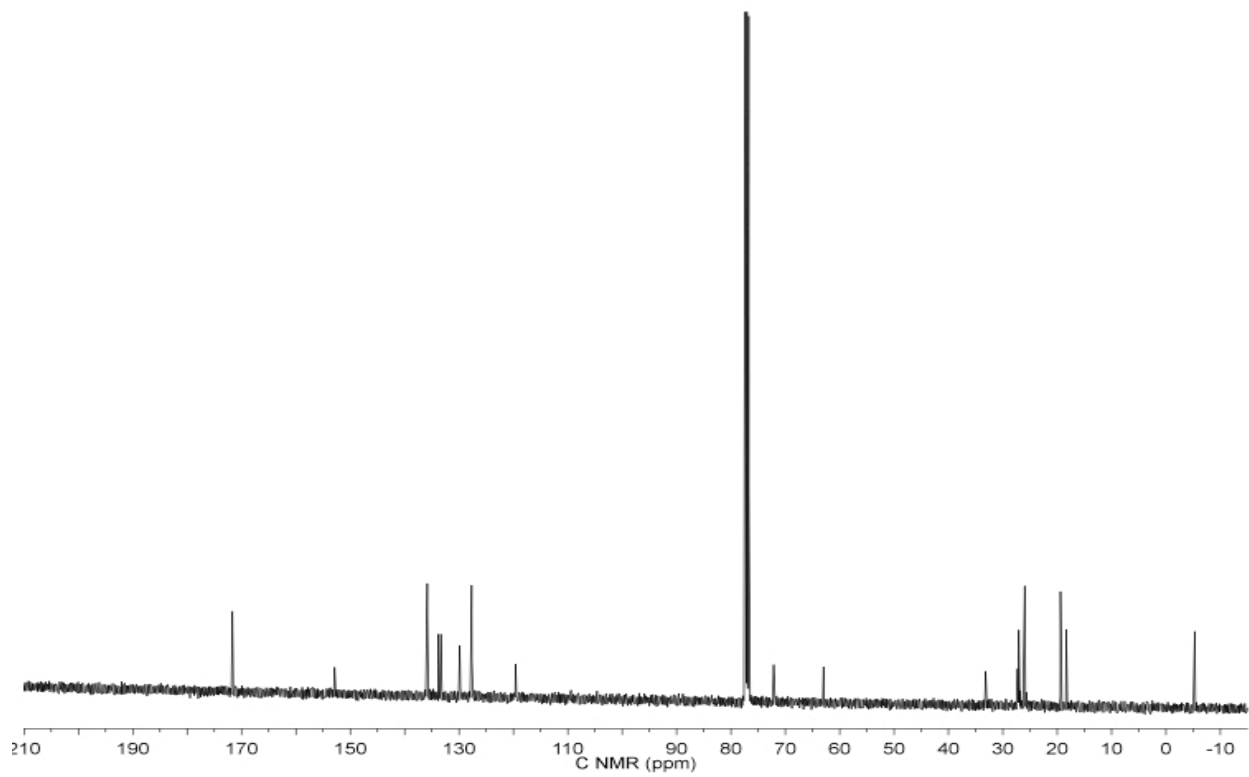
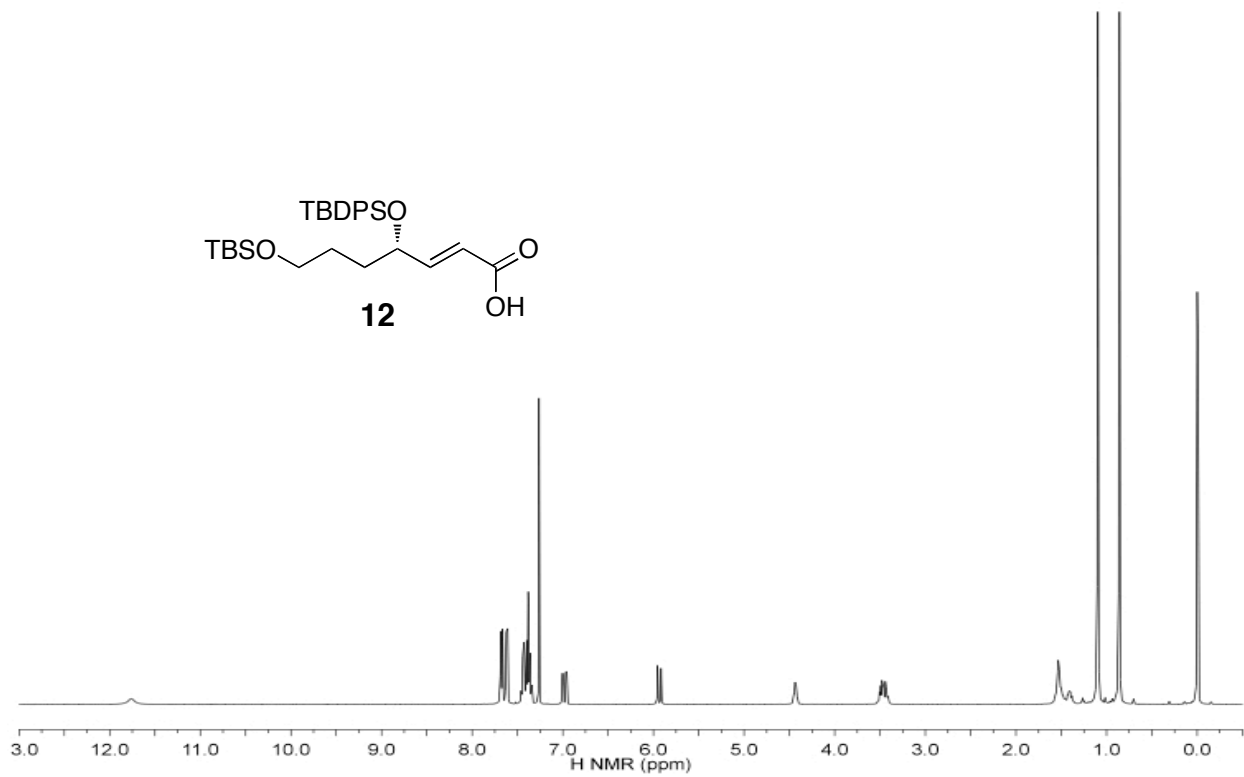
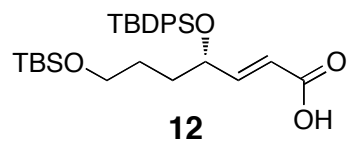
(S-141)

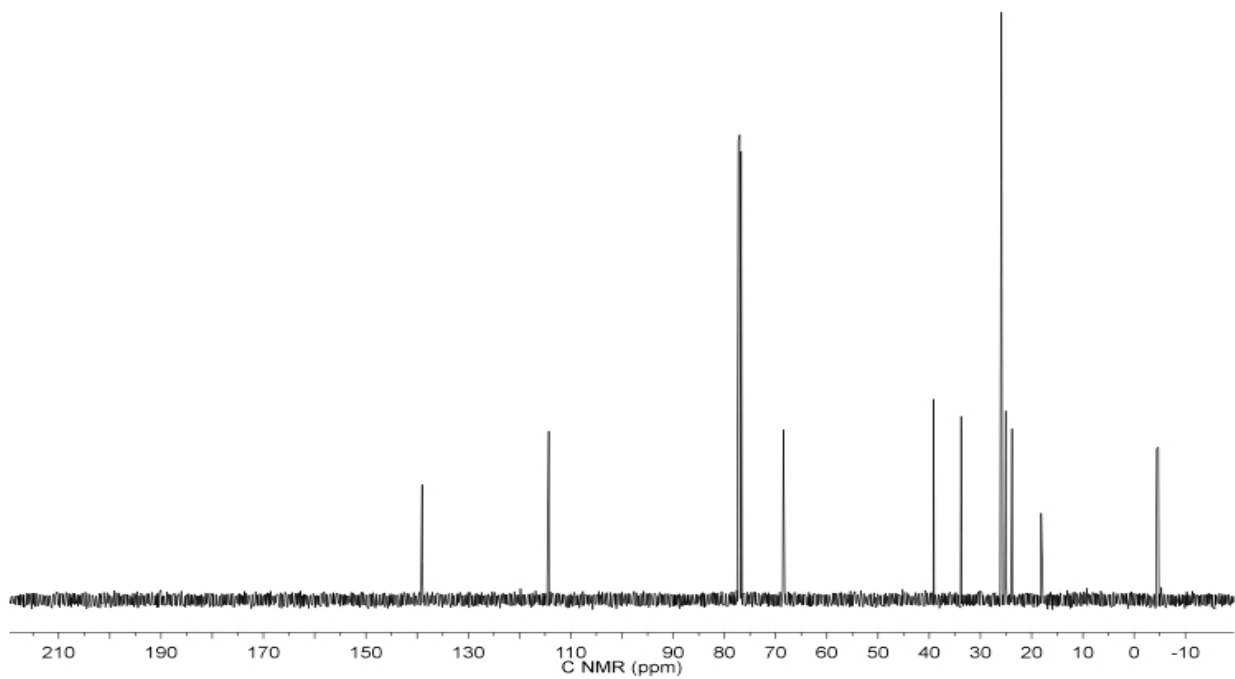
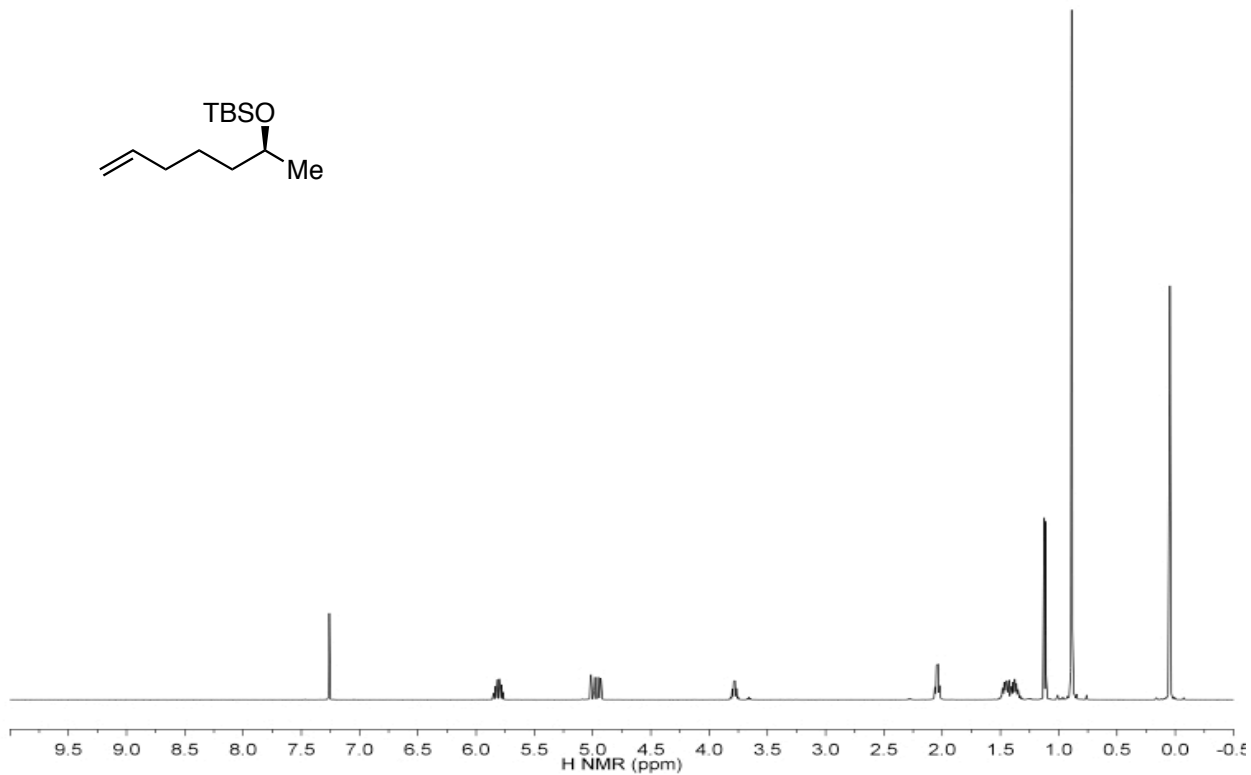
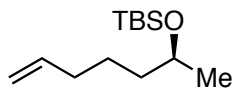


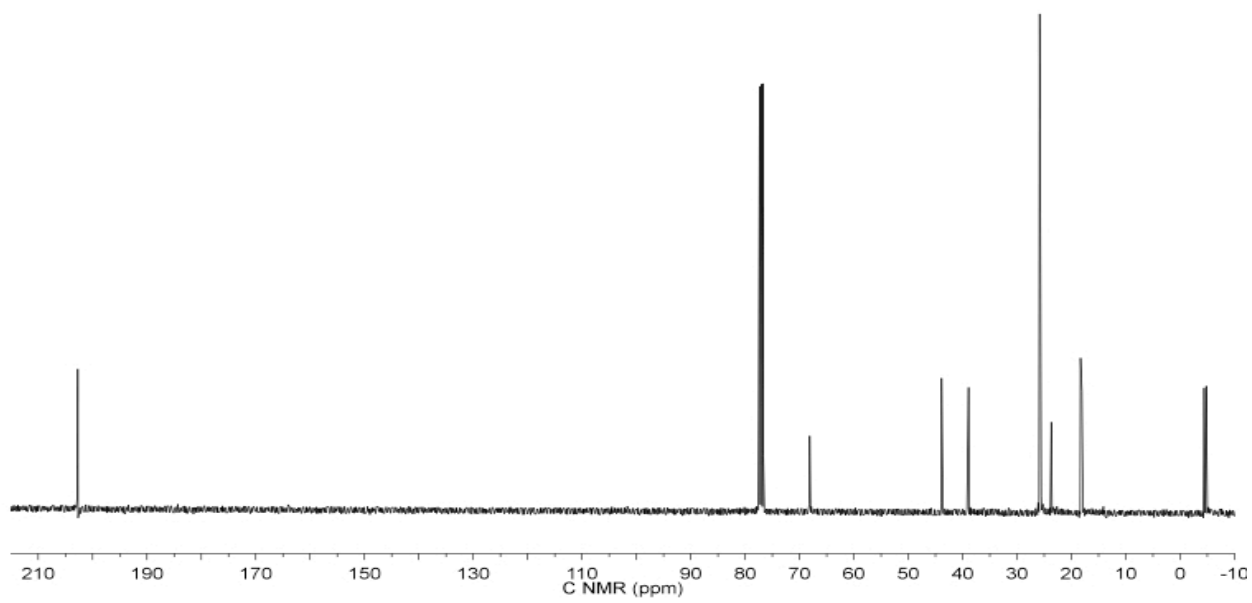
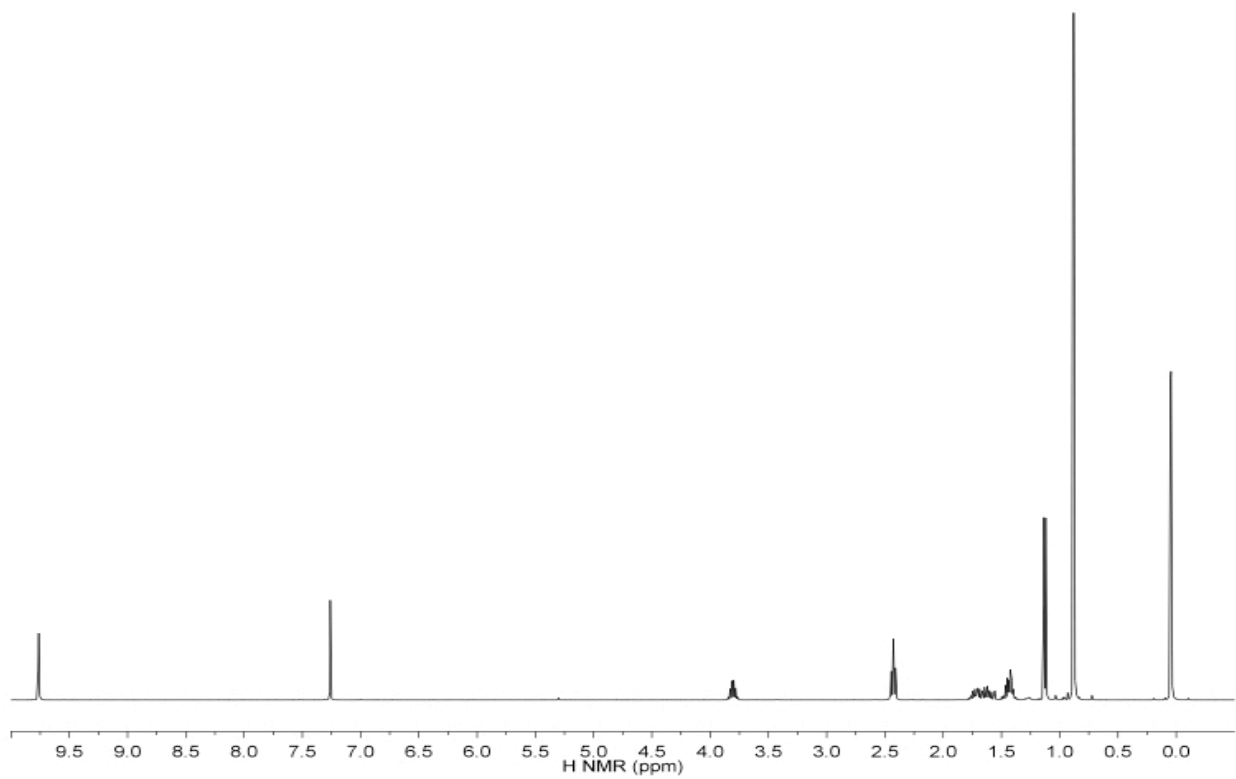
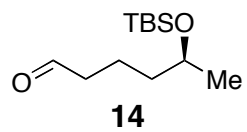


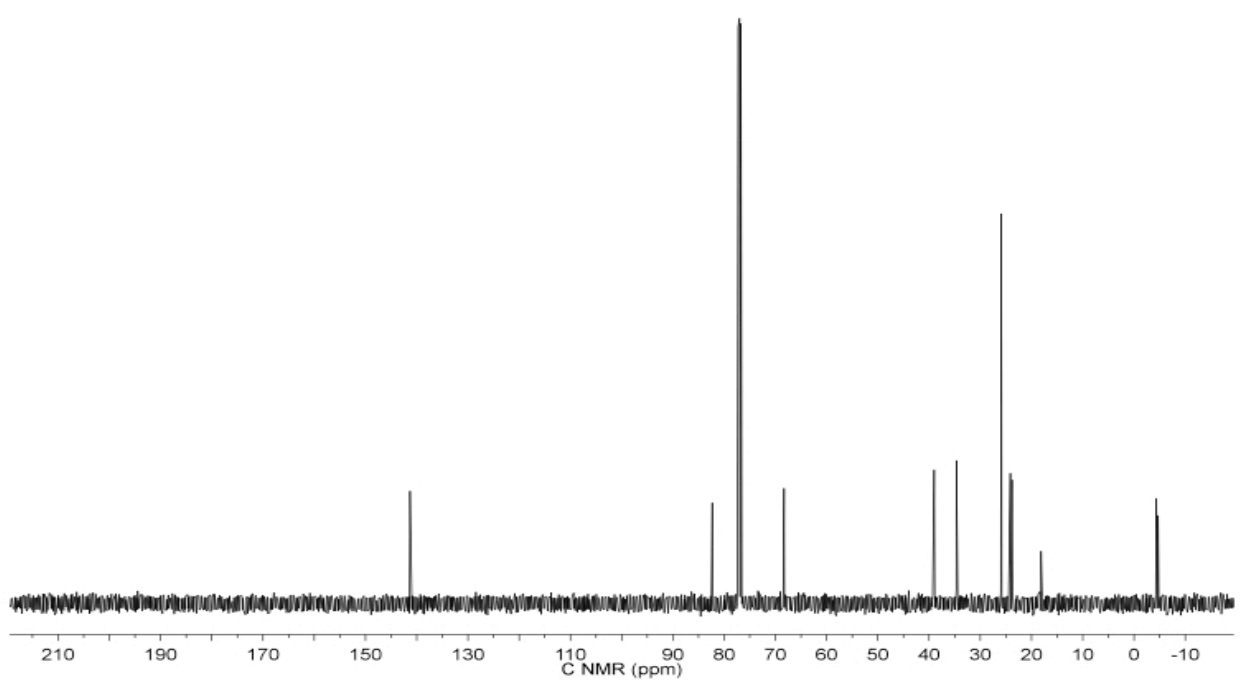
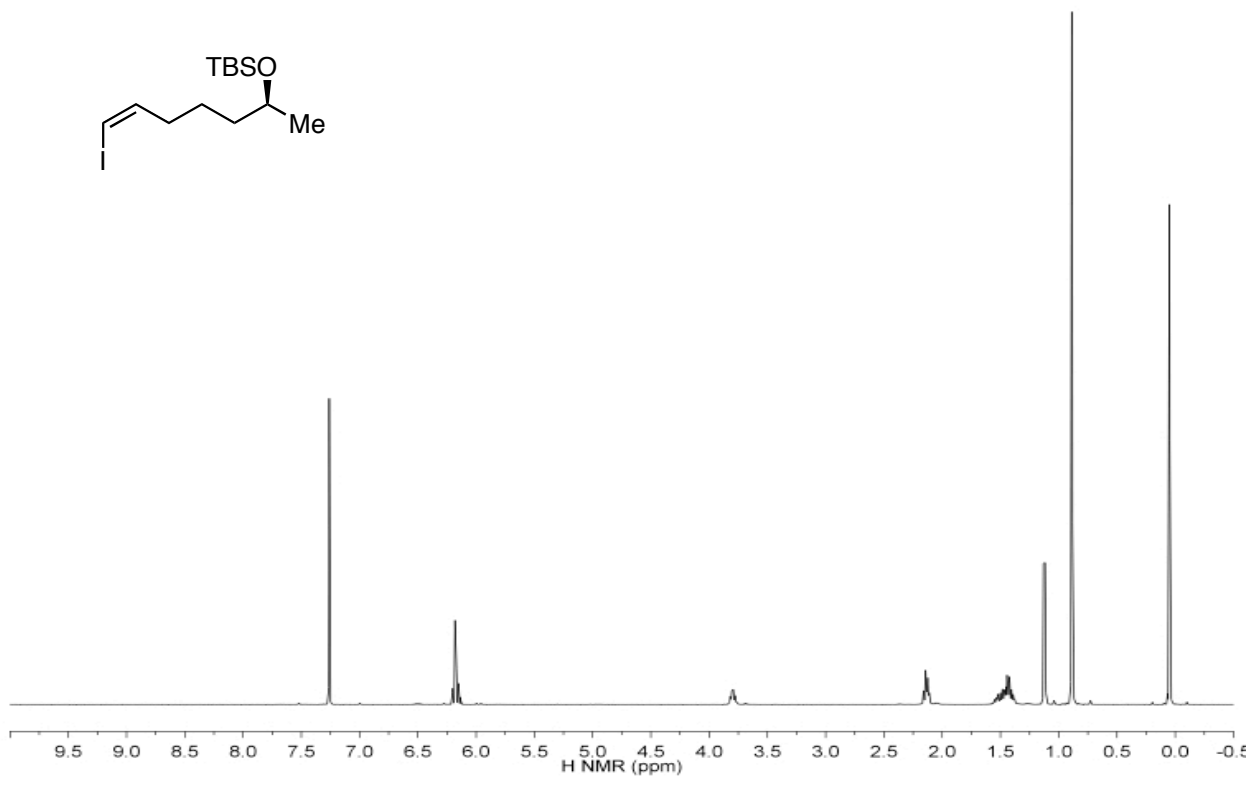
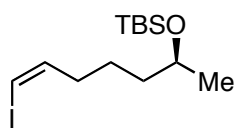


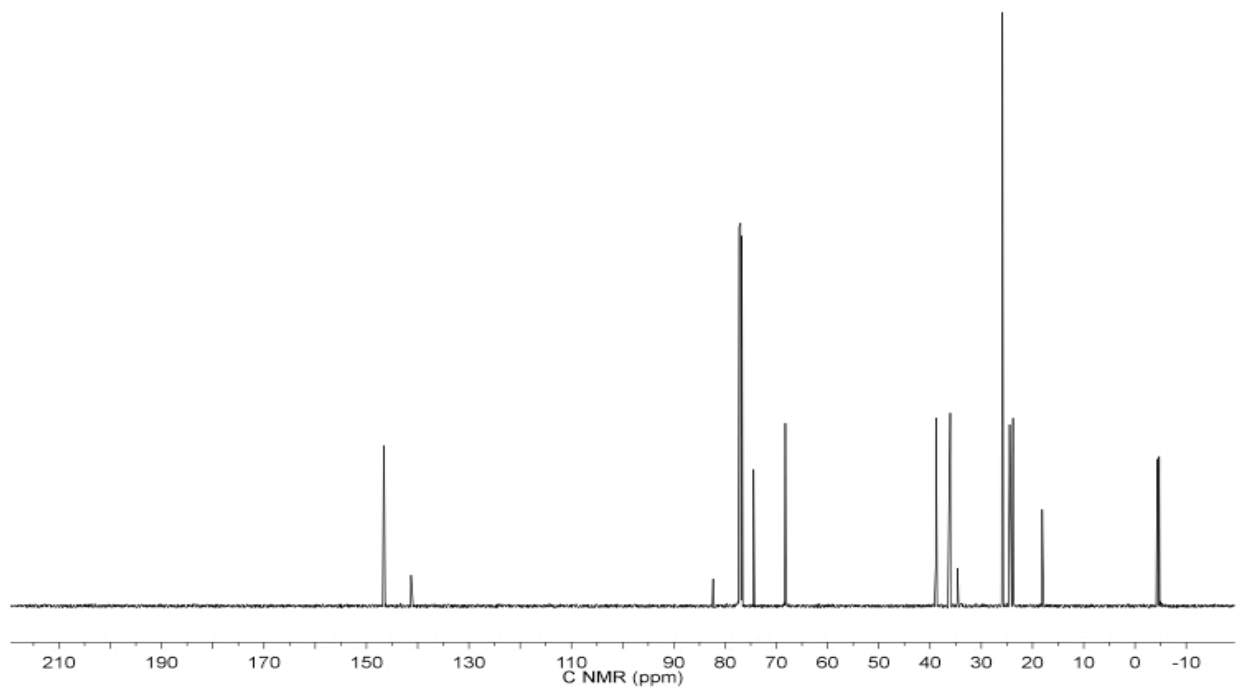
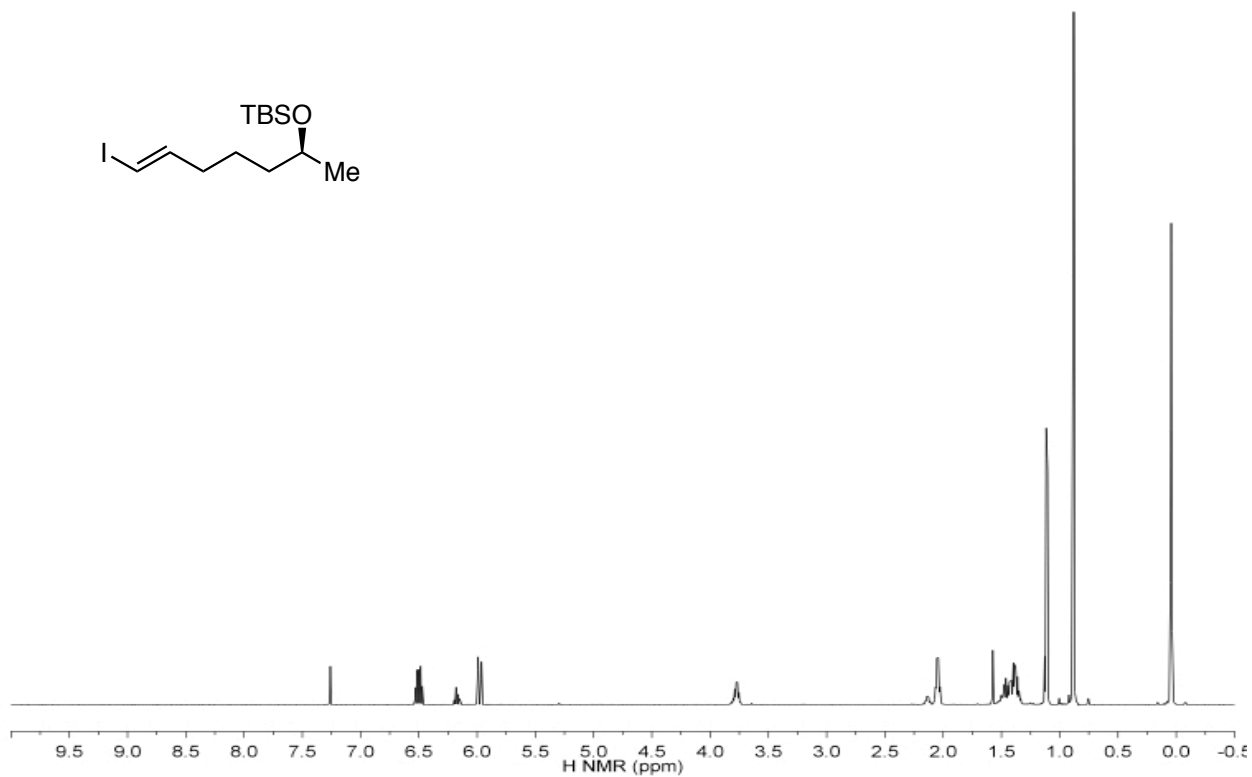
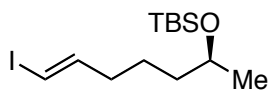


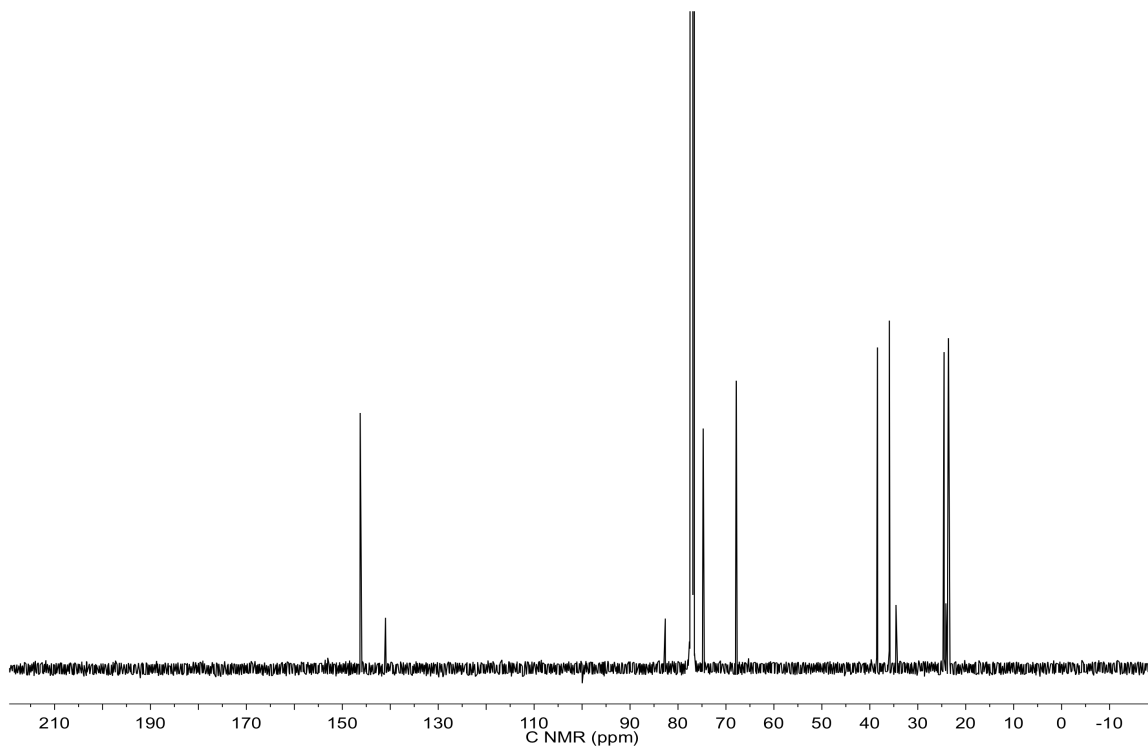
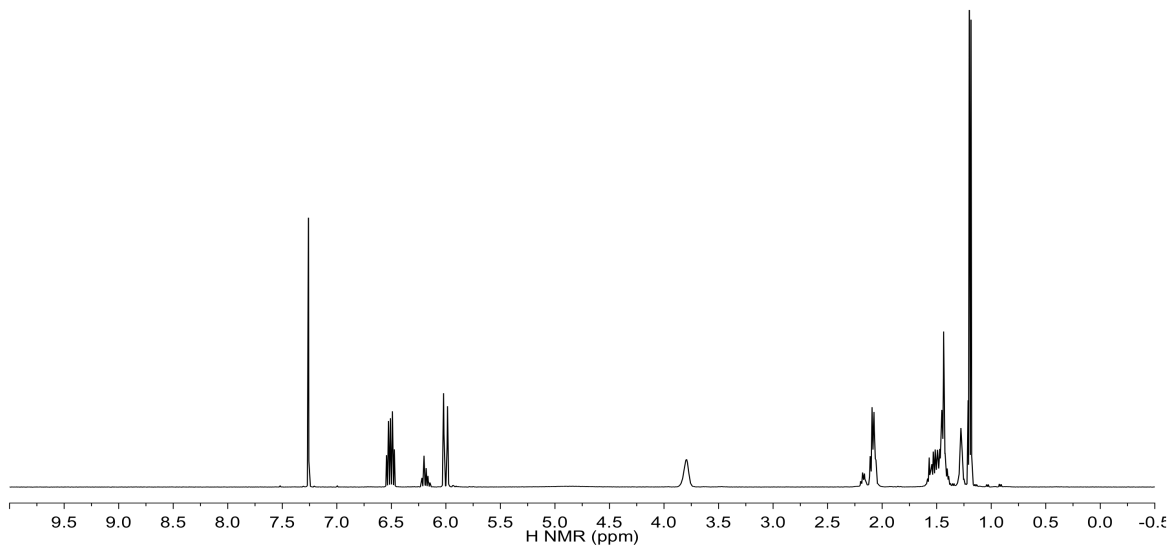
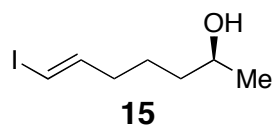


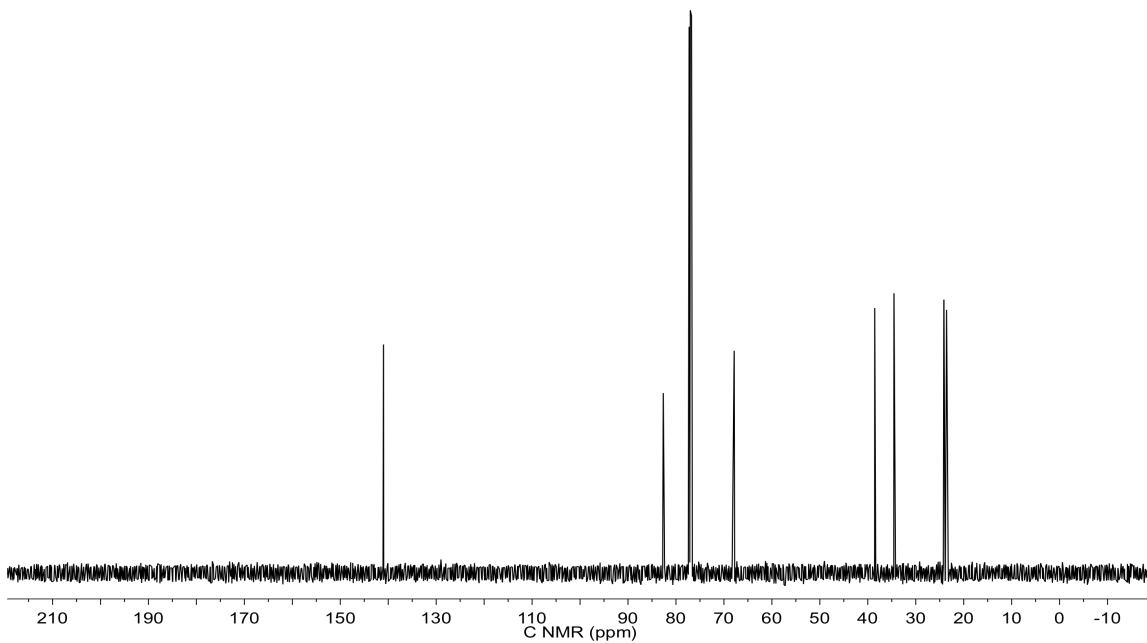
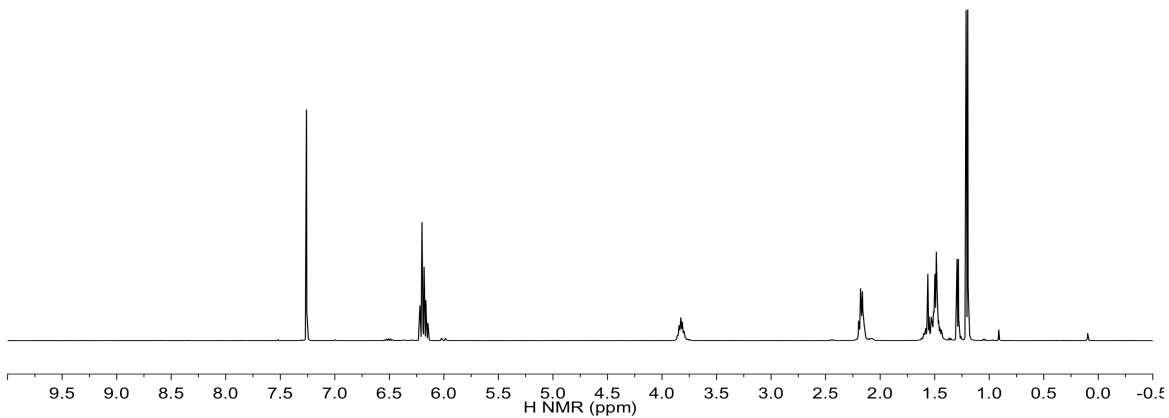
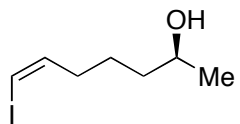


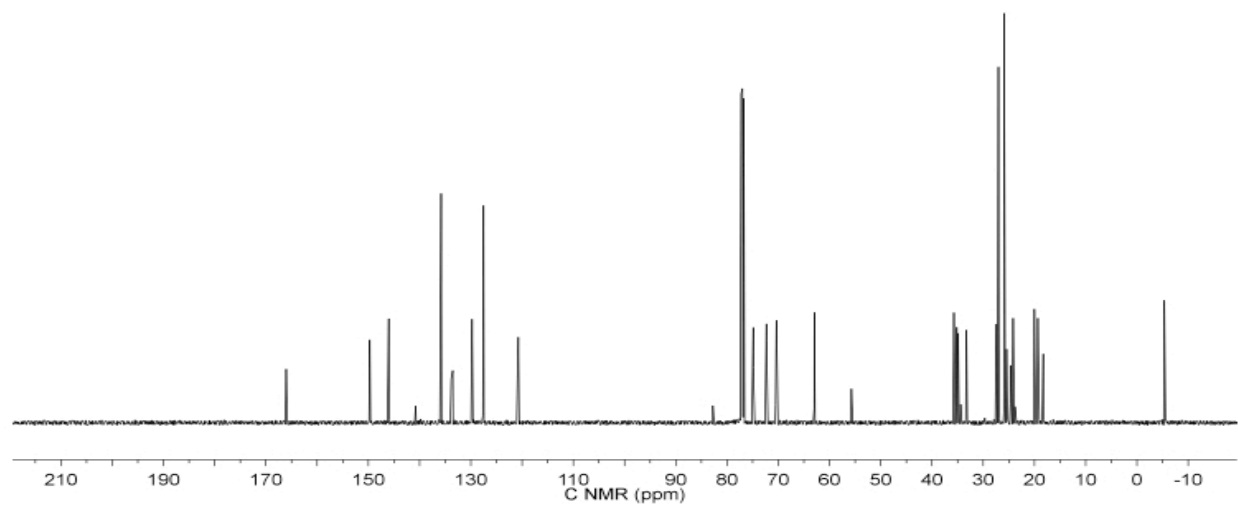
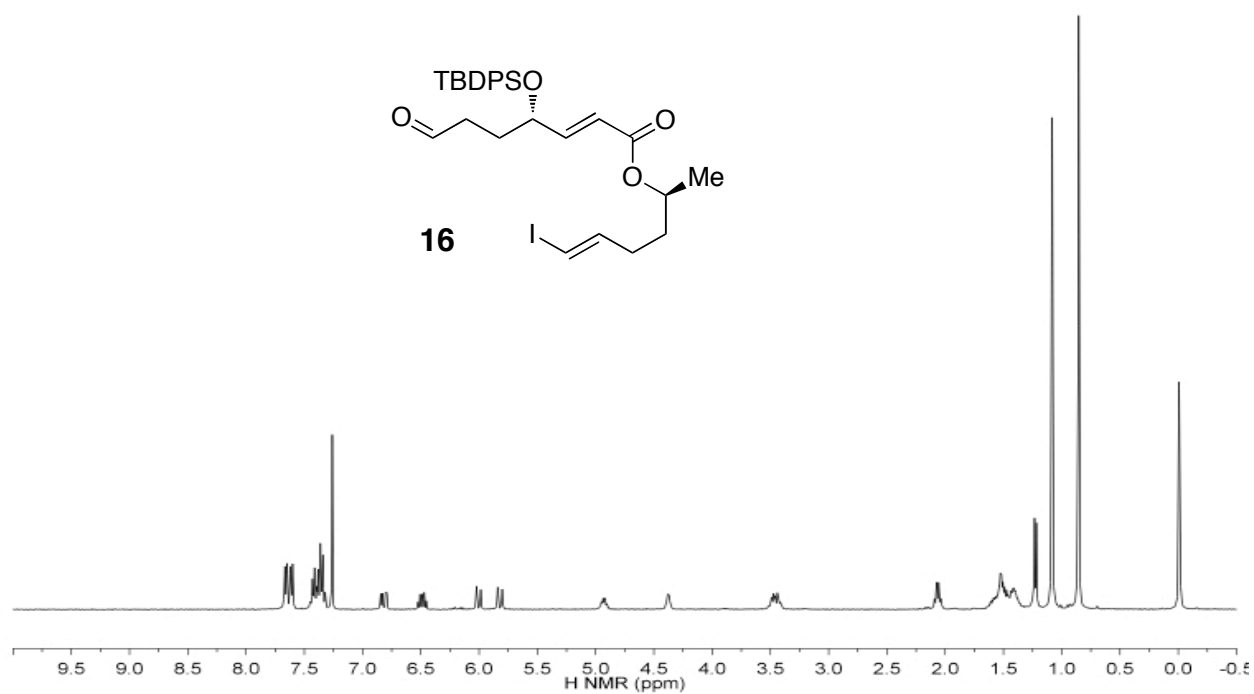


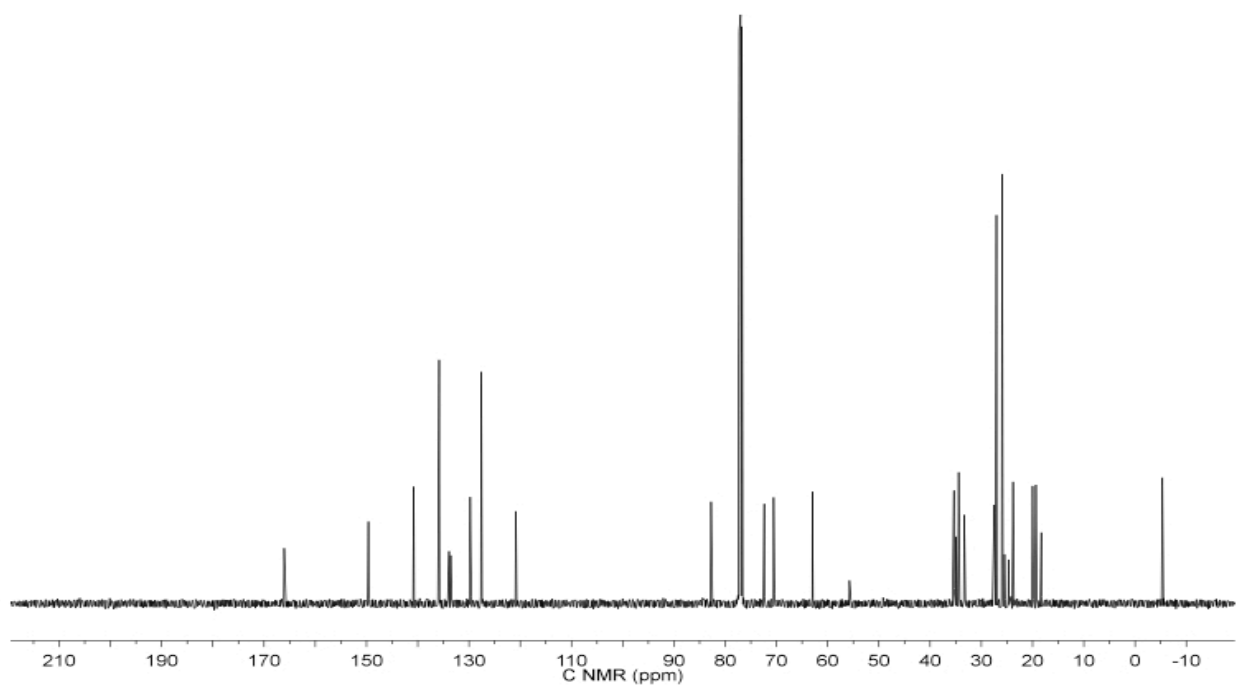
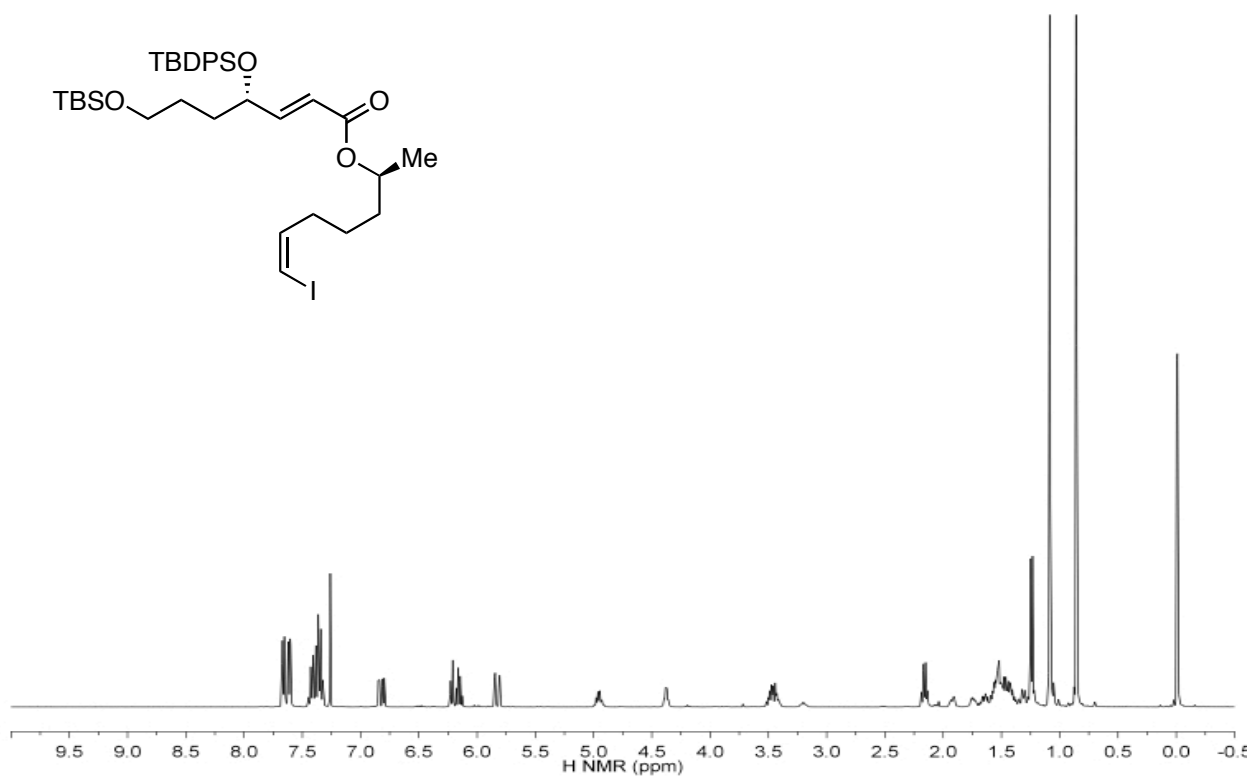
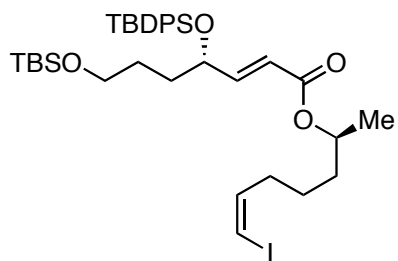


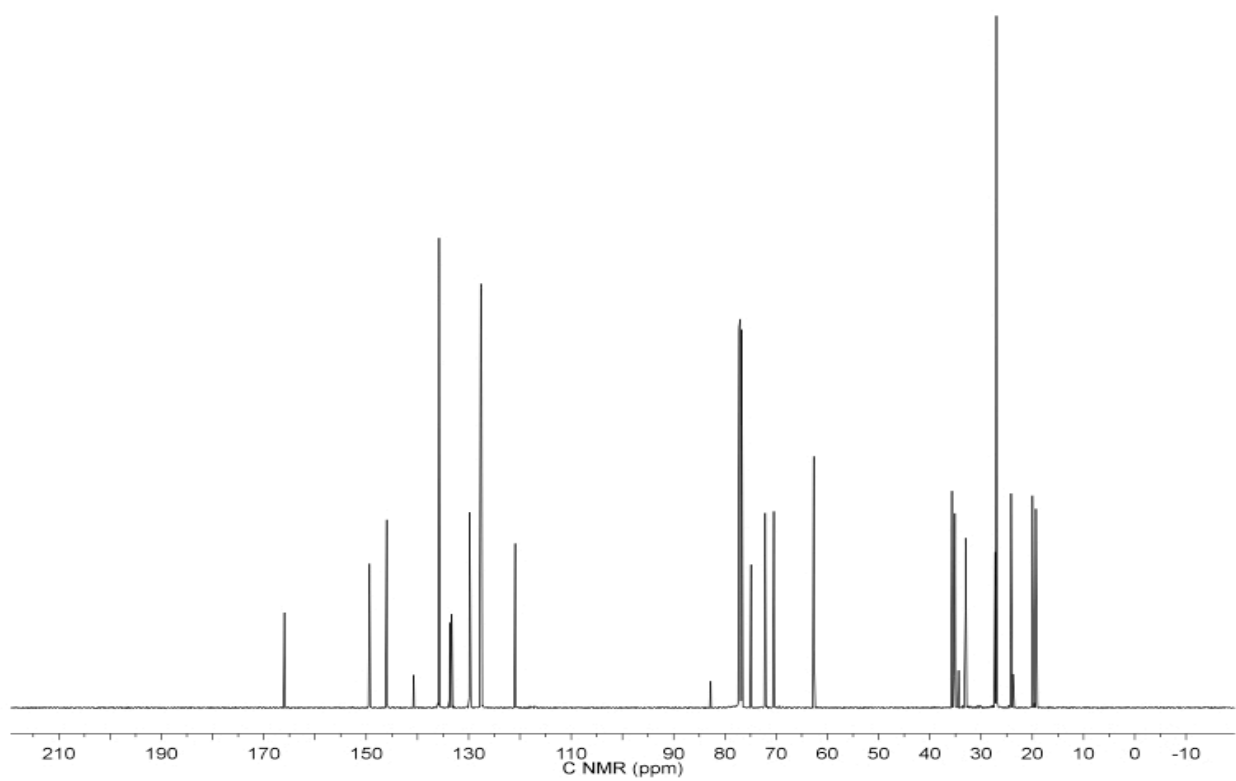
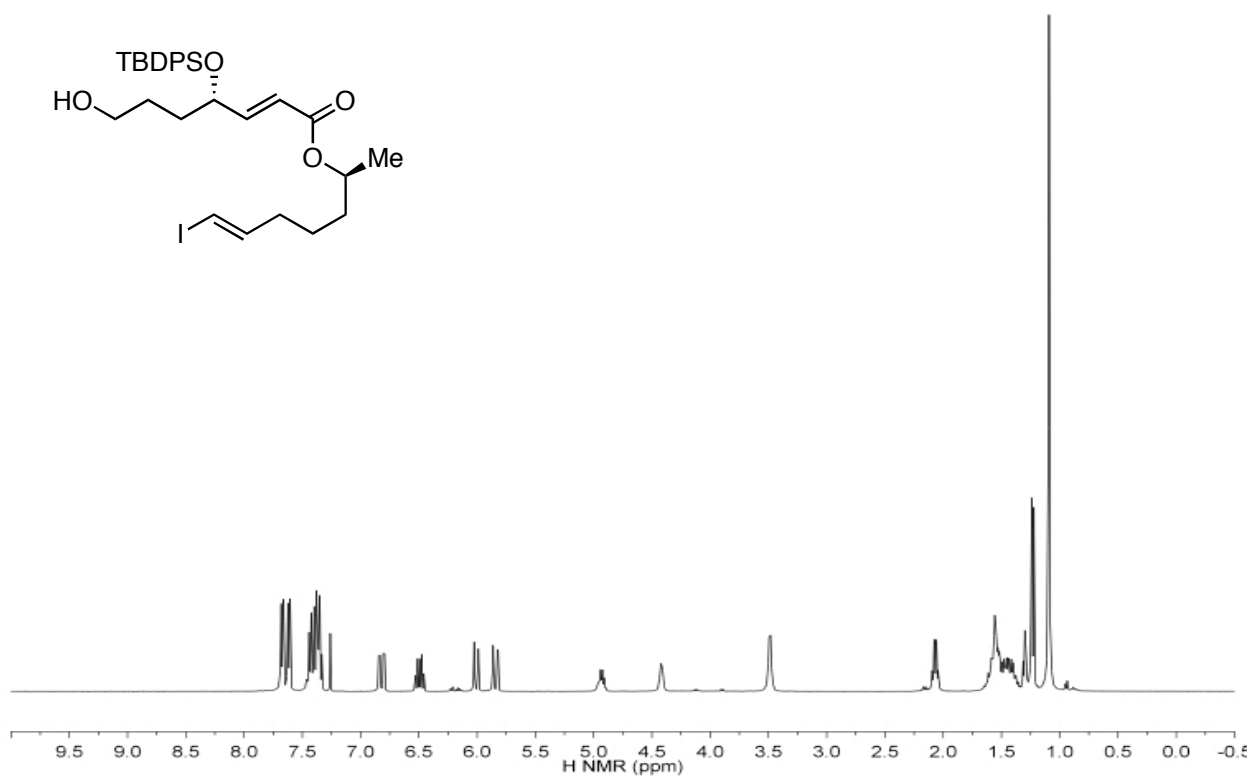
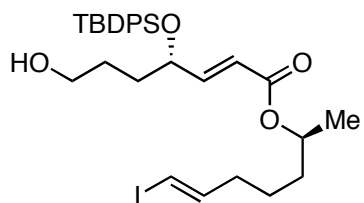


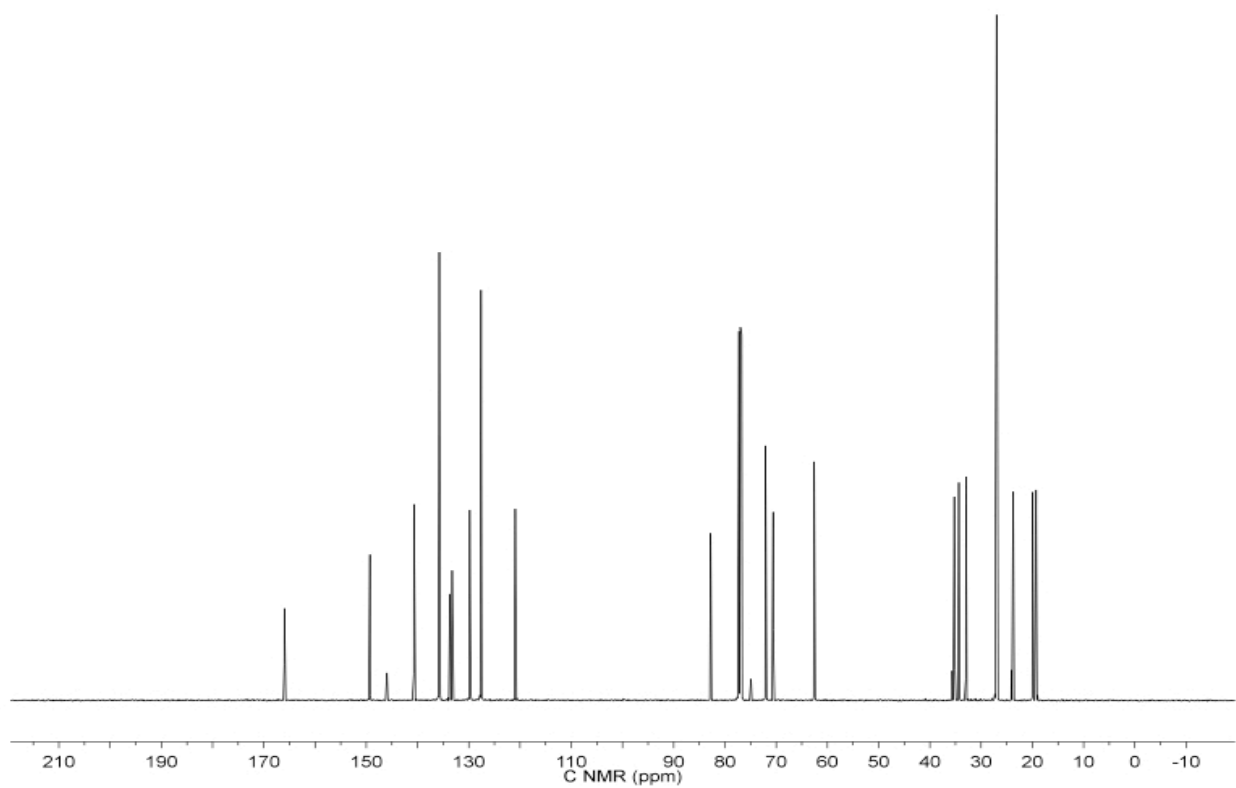
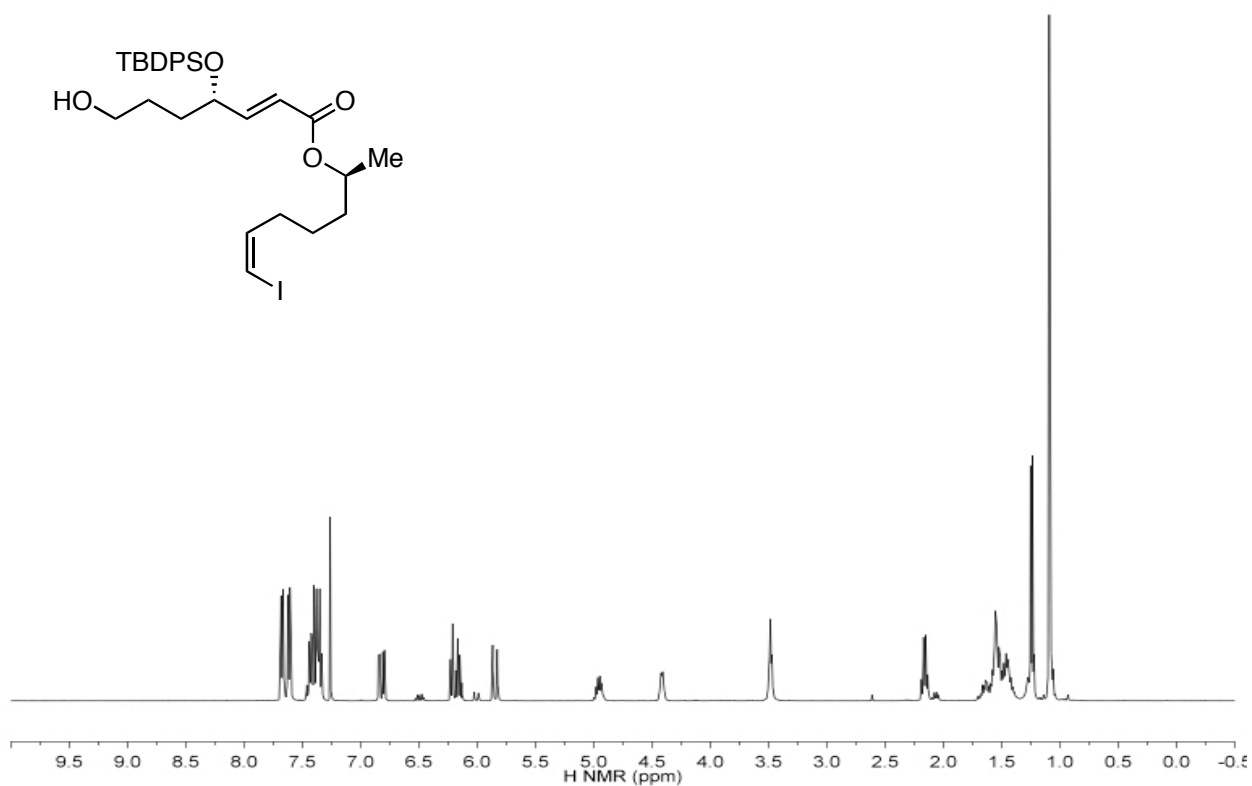
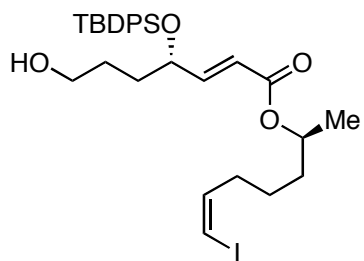


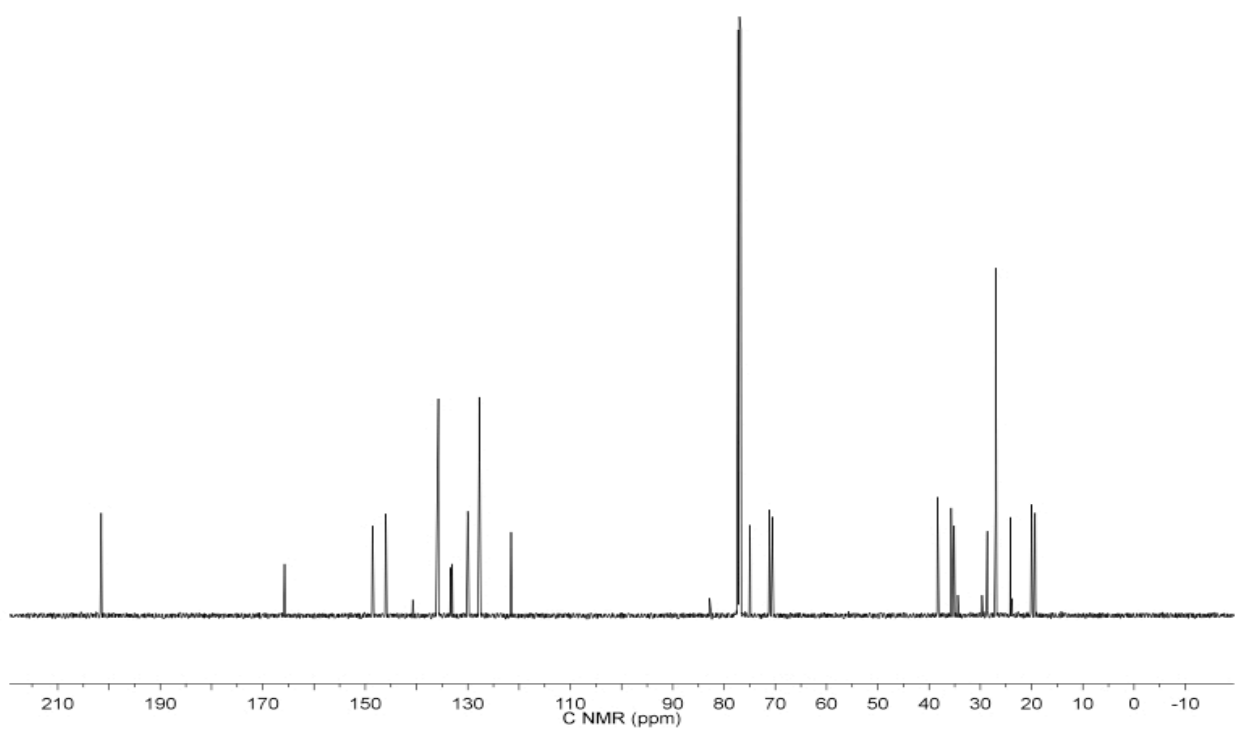
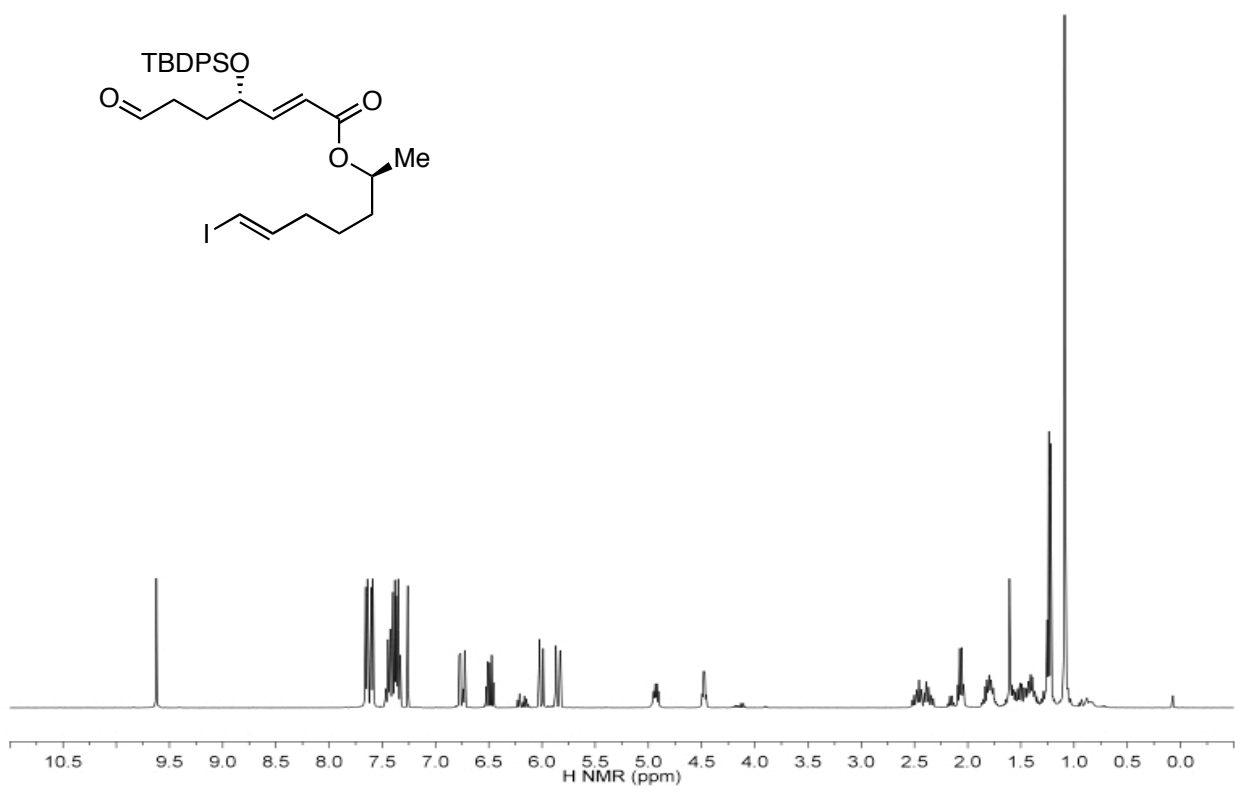
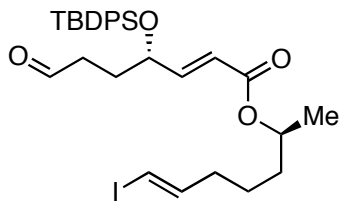


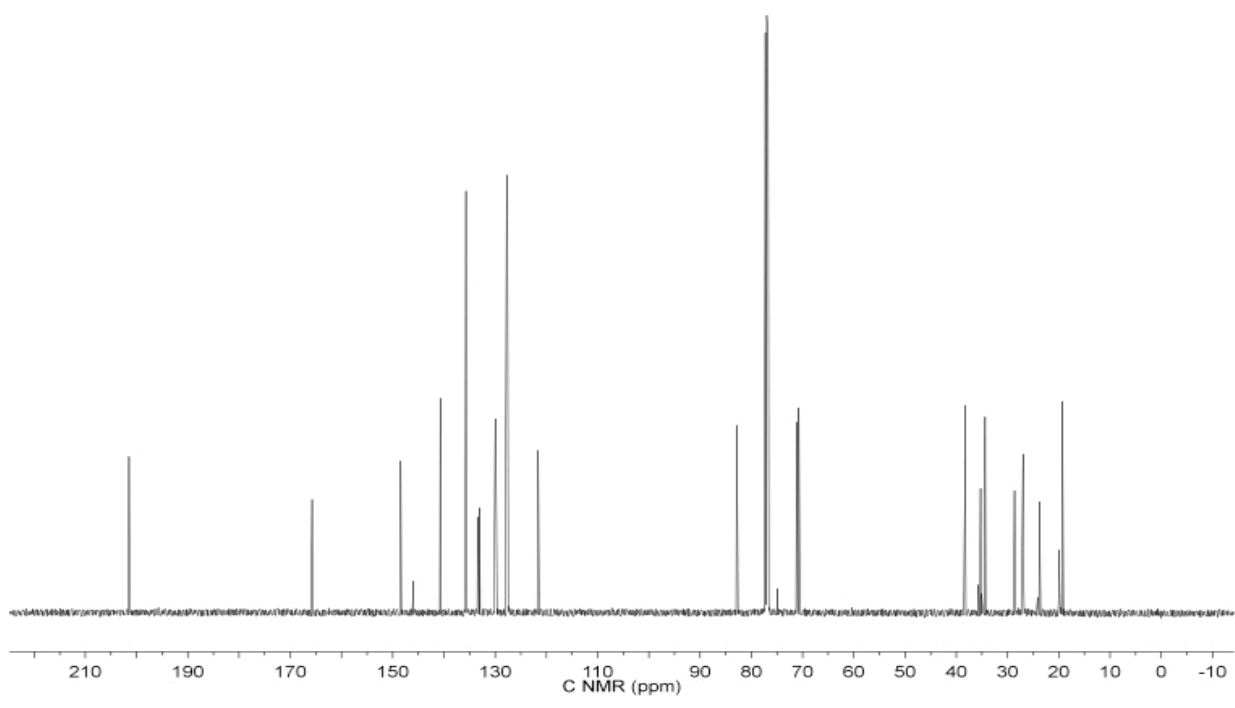
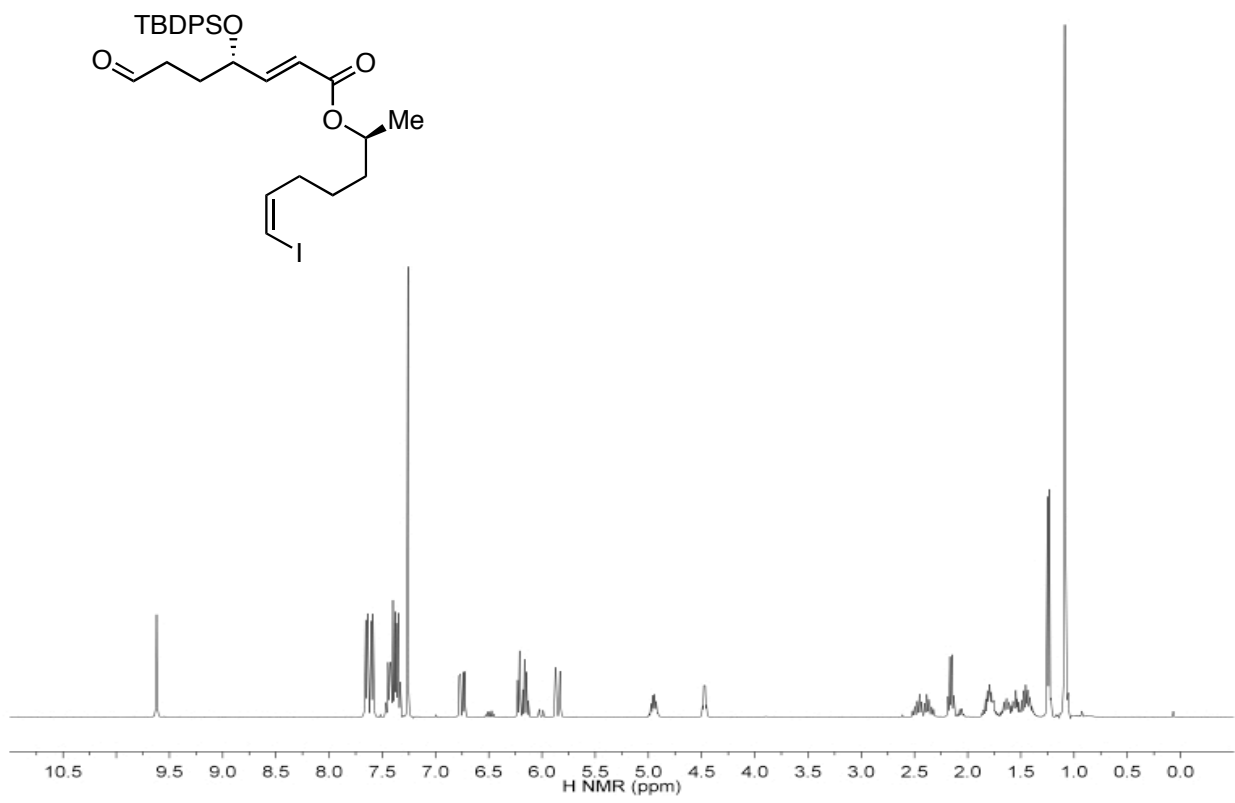


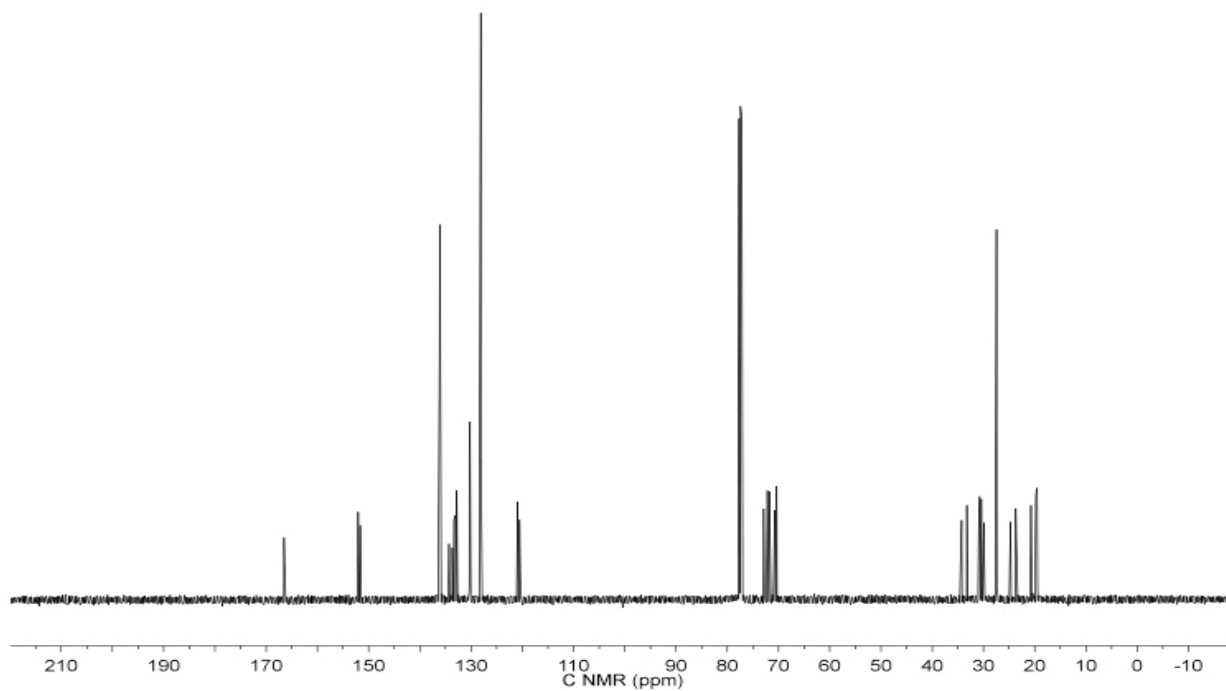
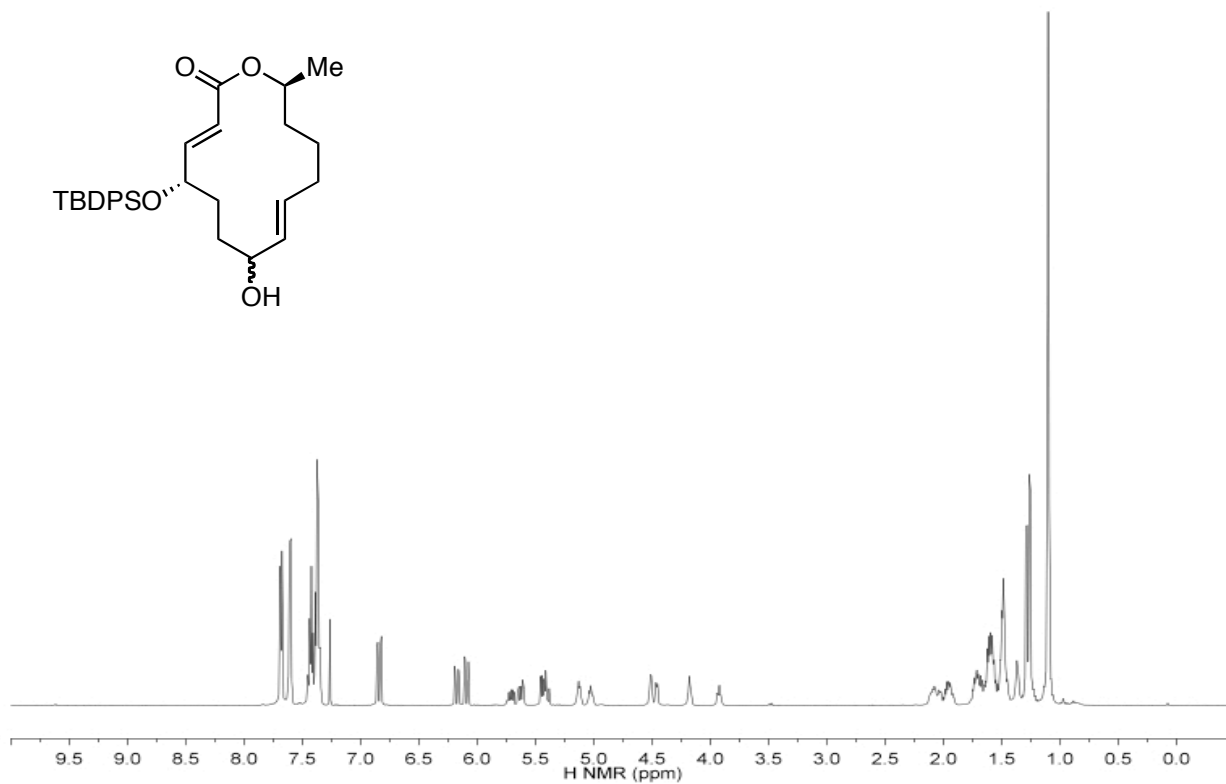
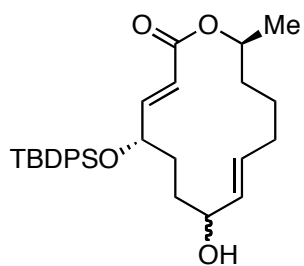


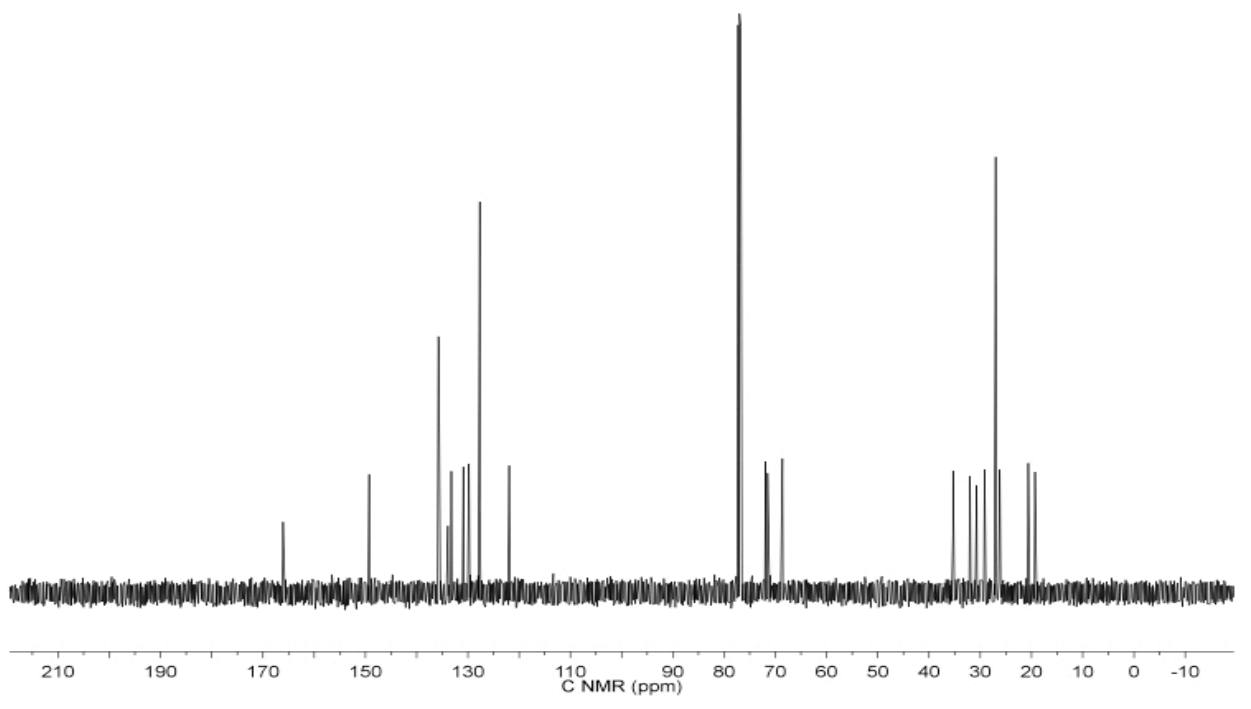
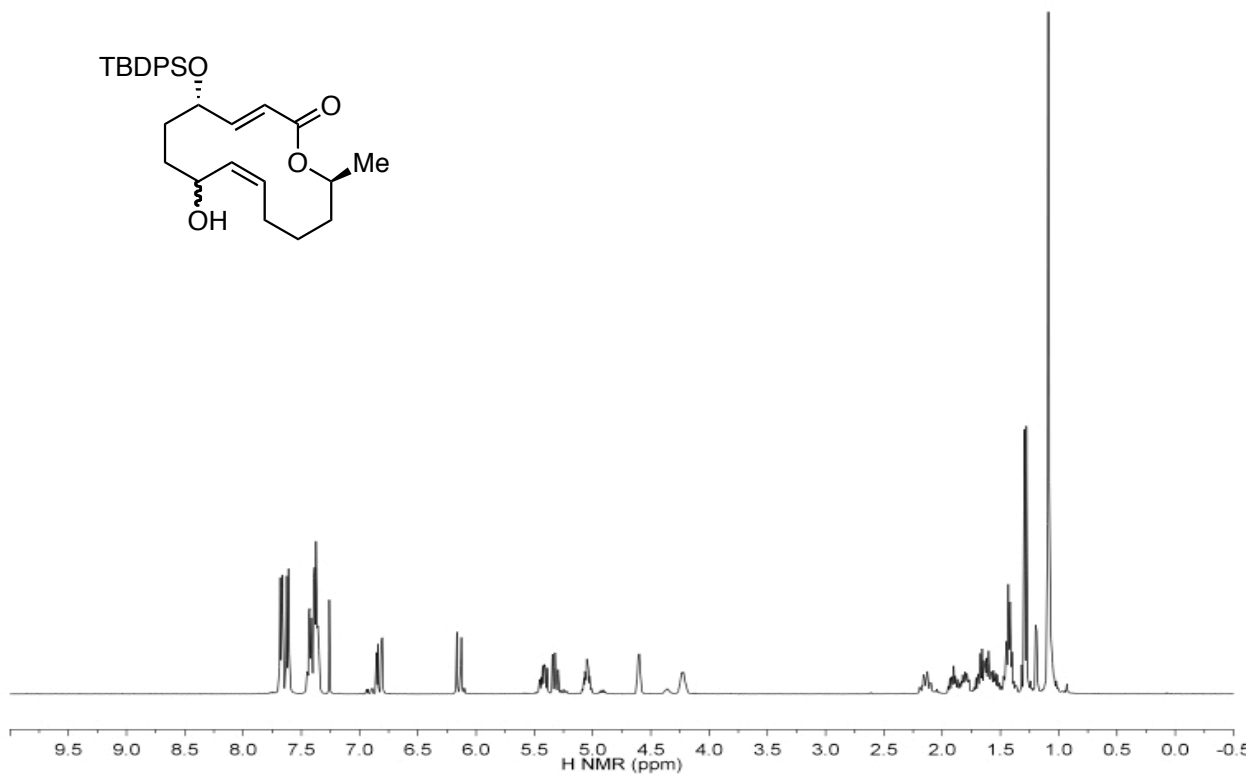
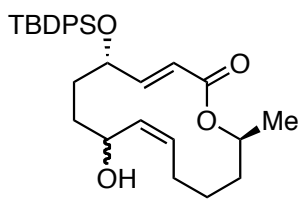


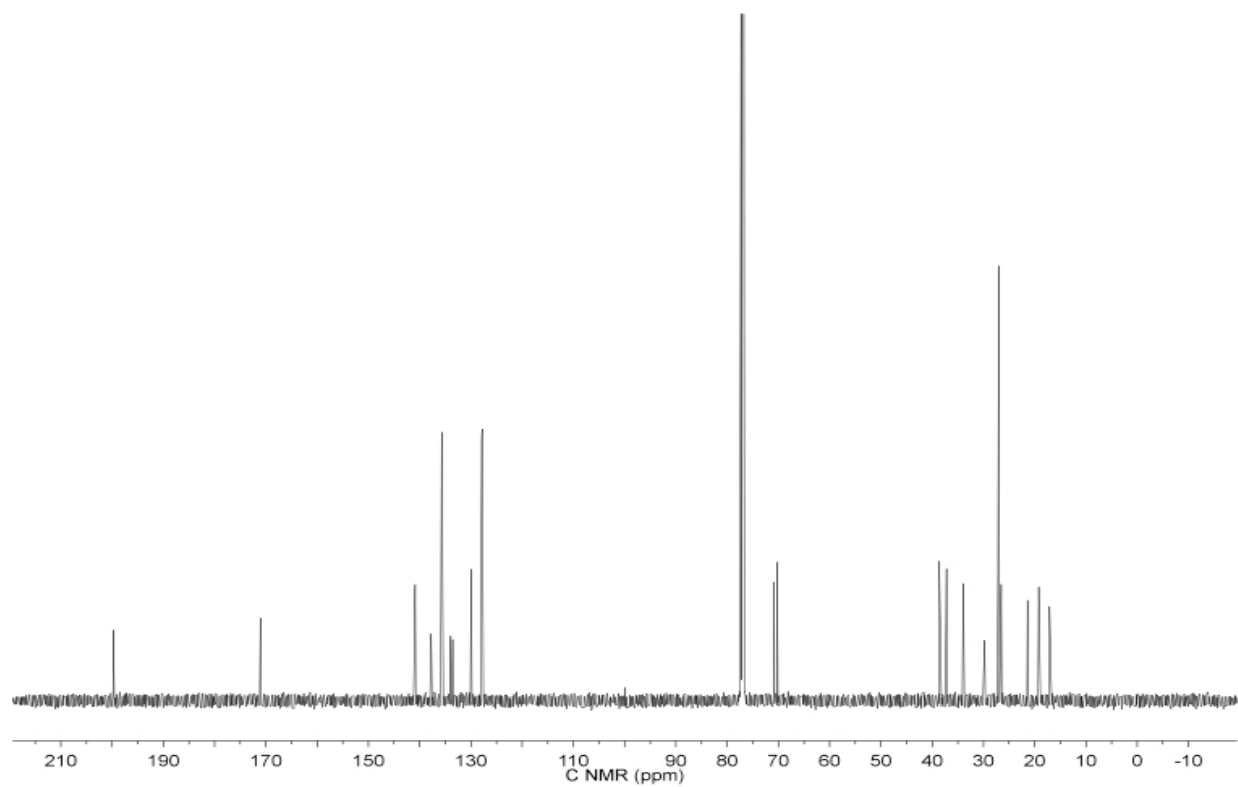
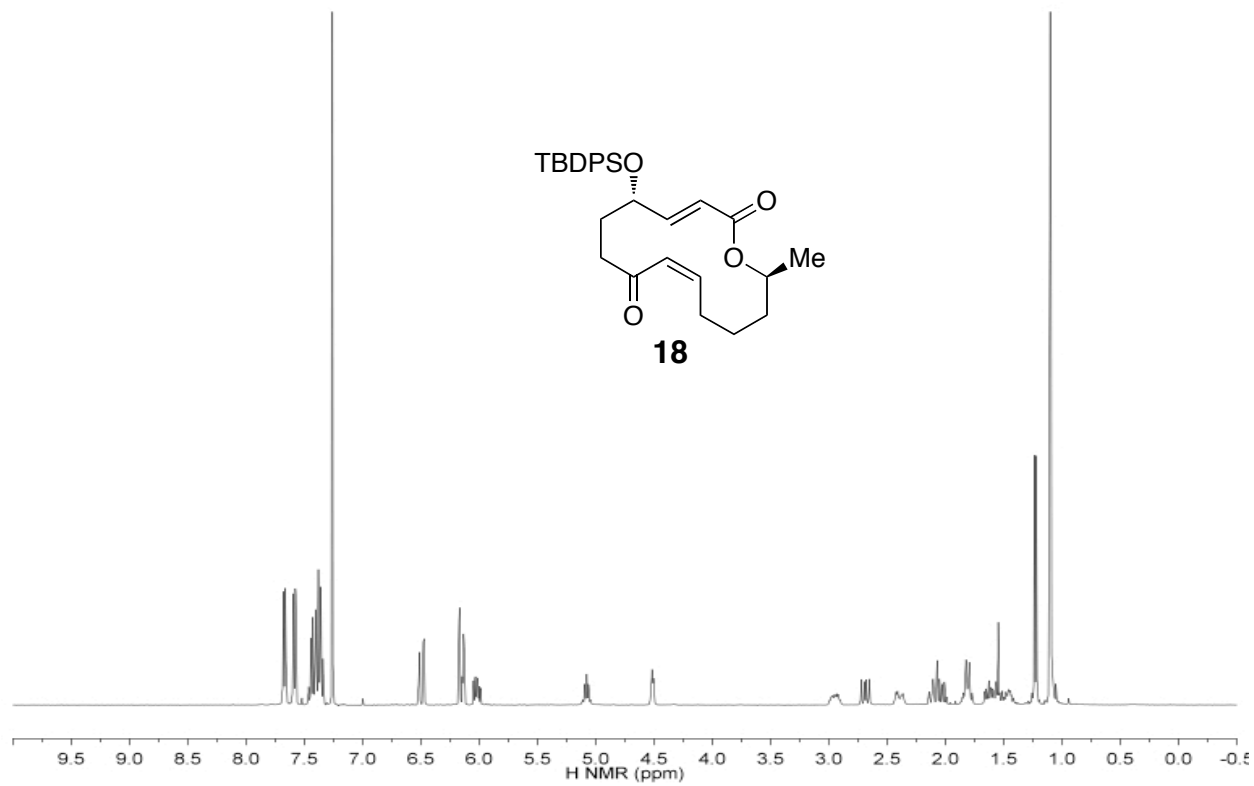


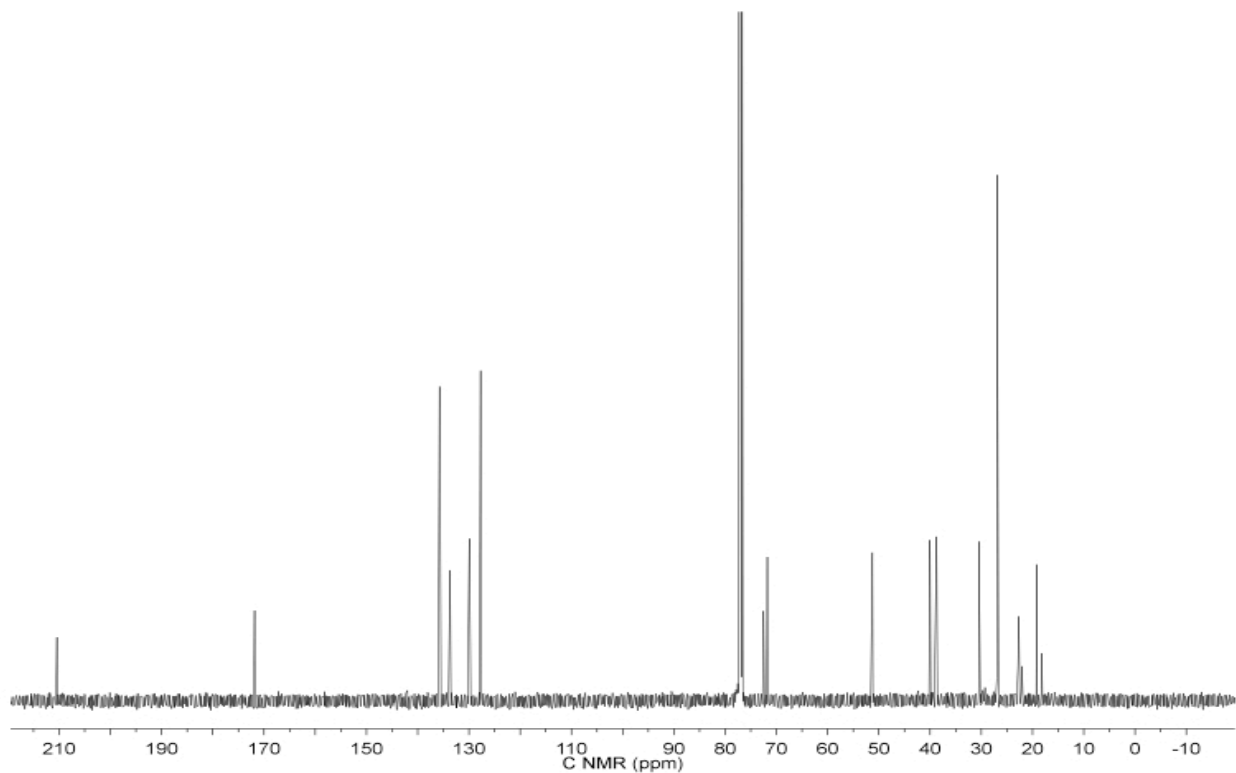
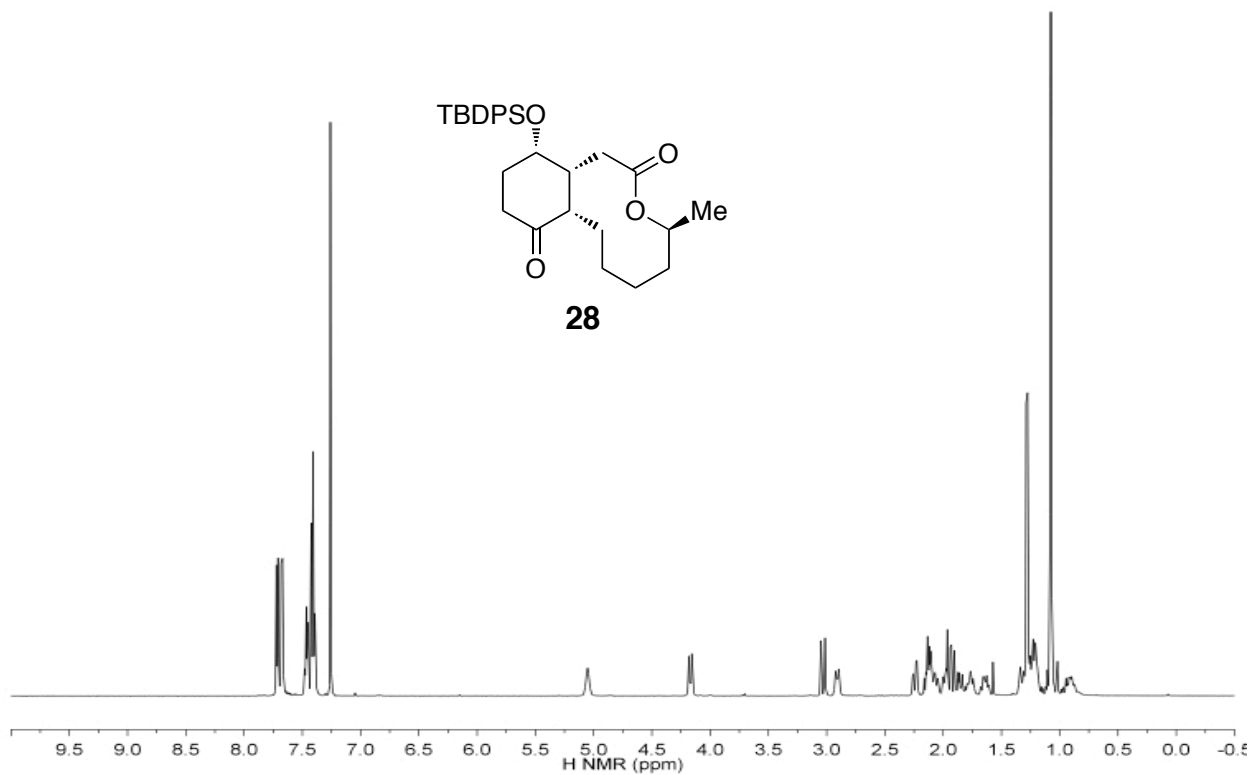
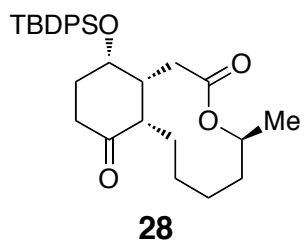


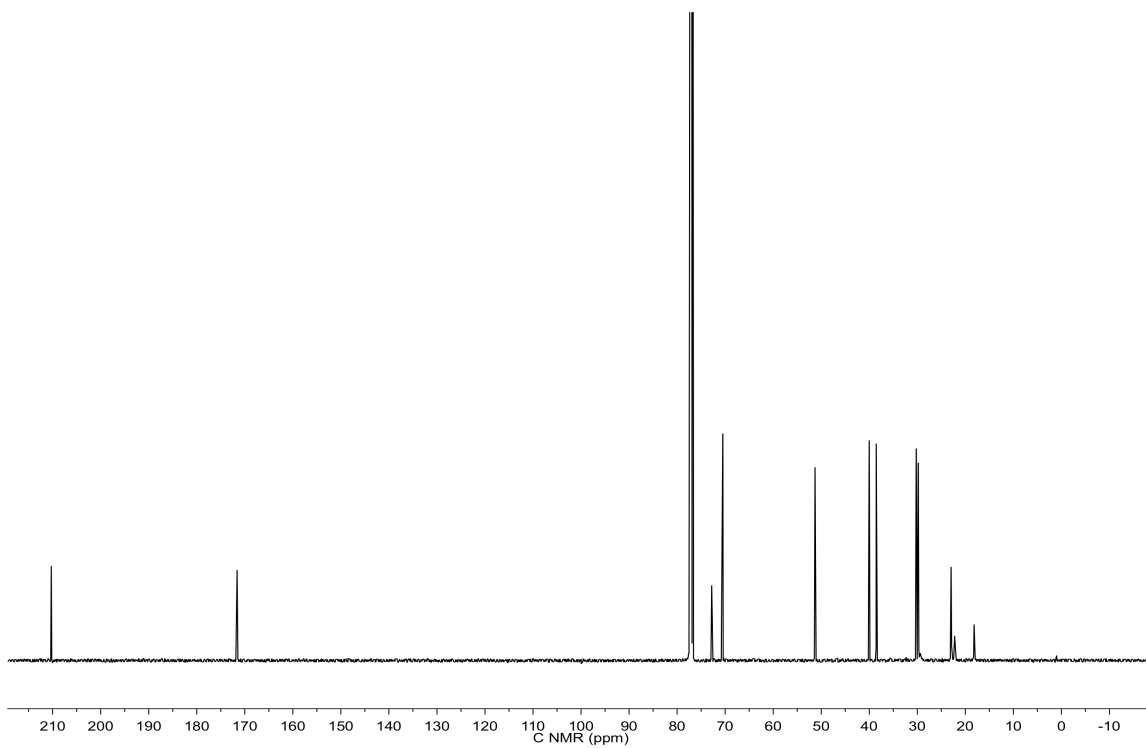
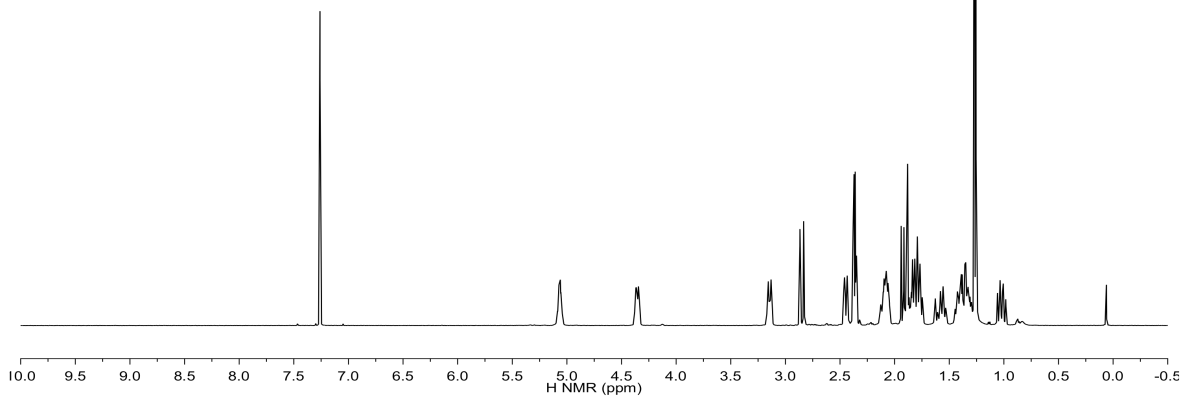
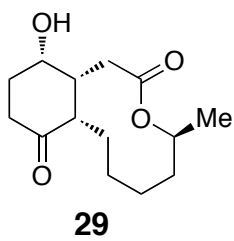


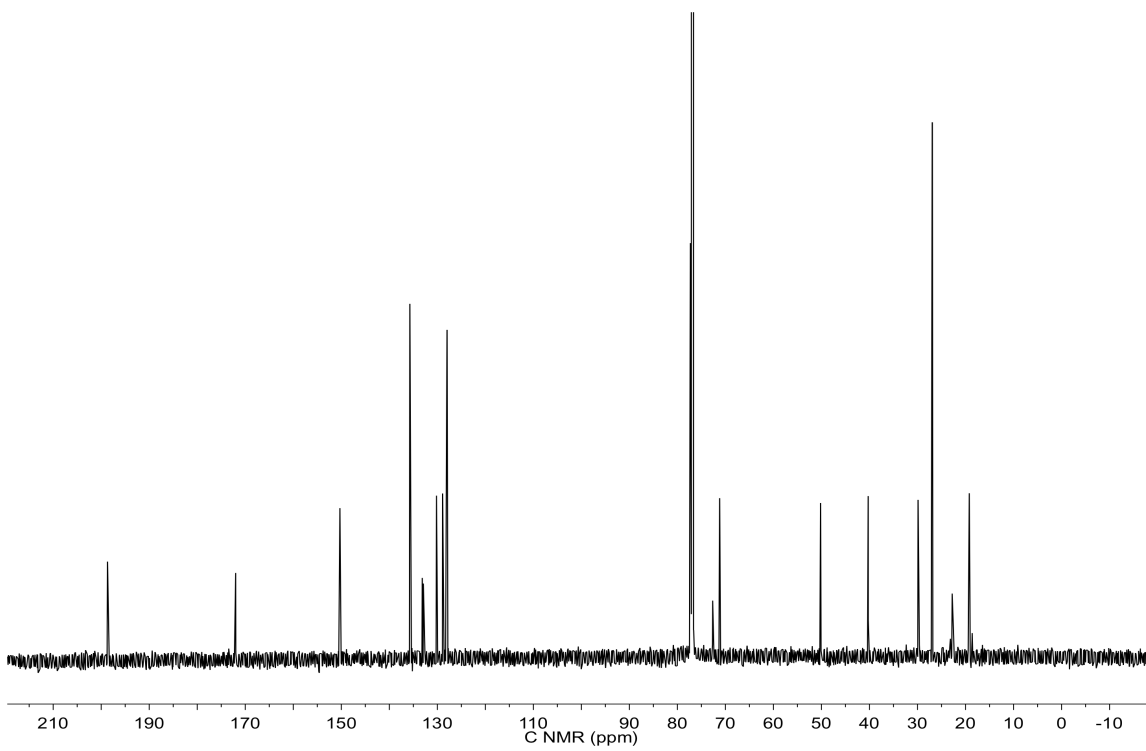
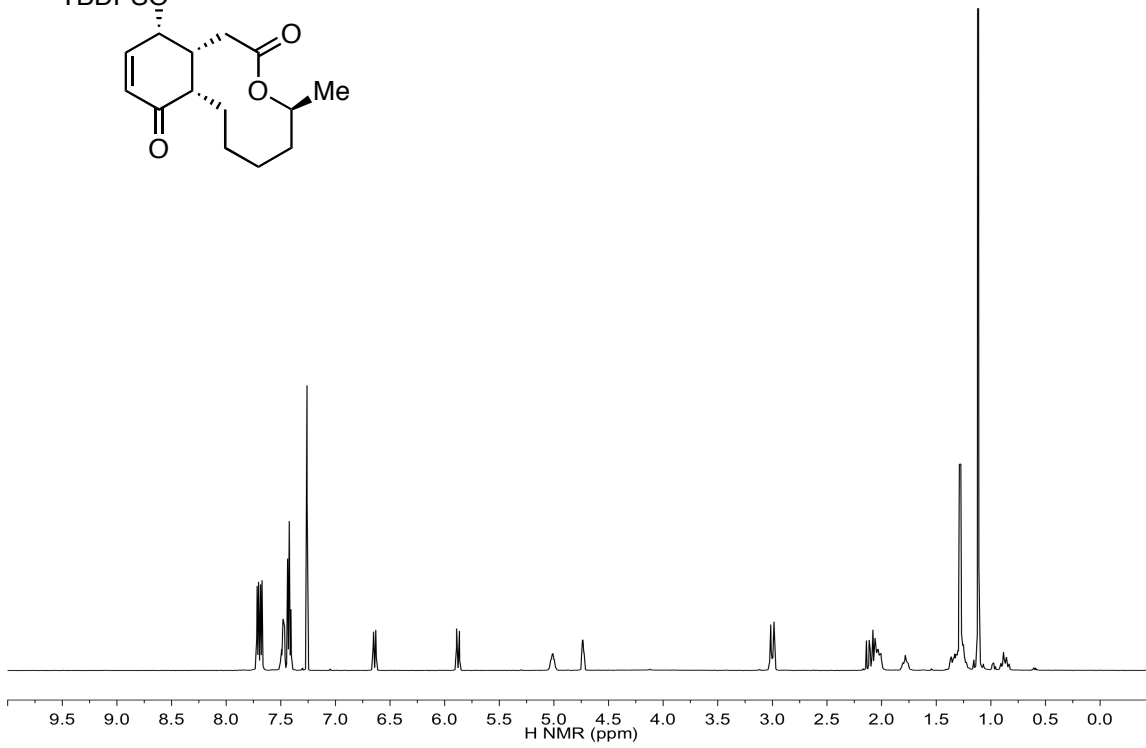
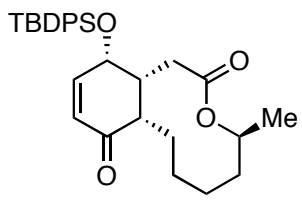


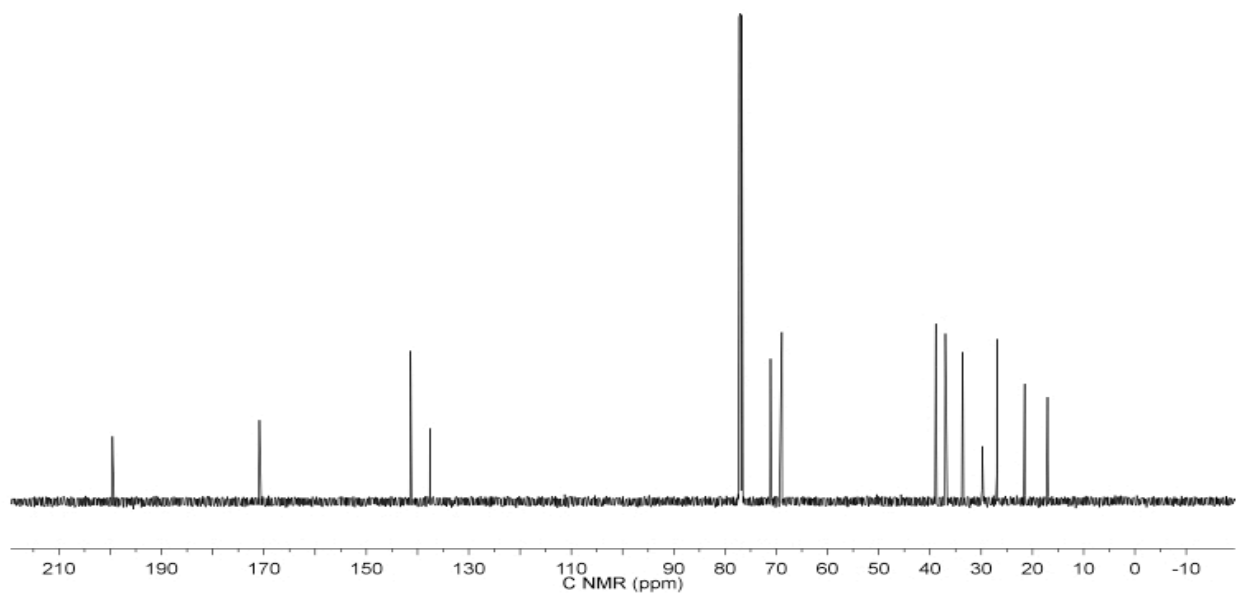
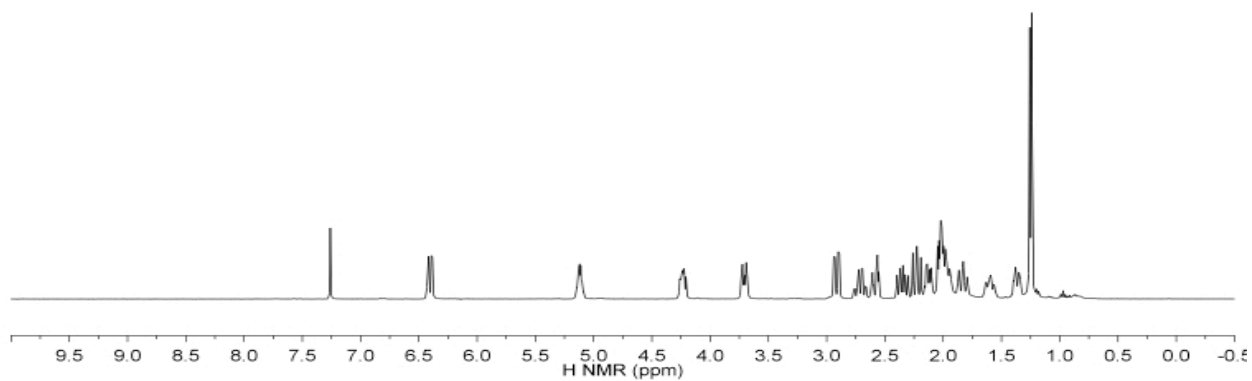
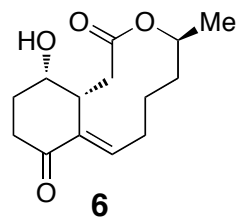


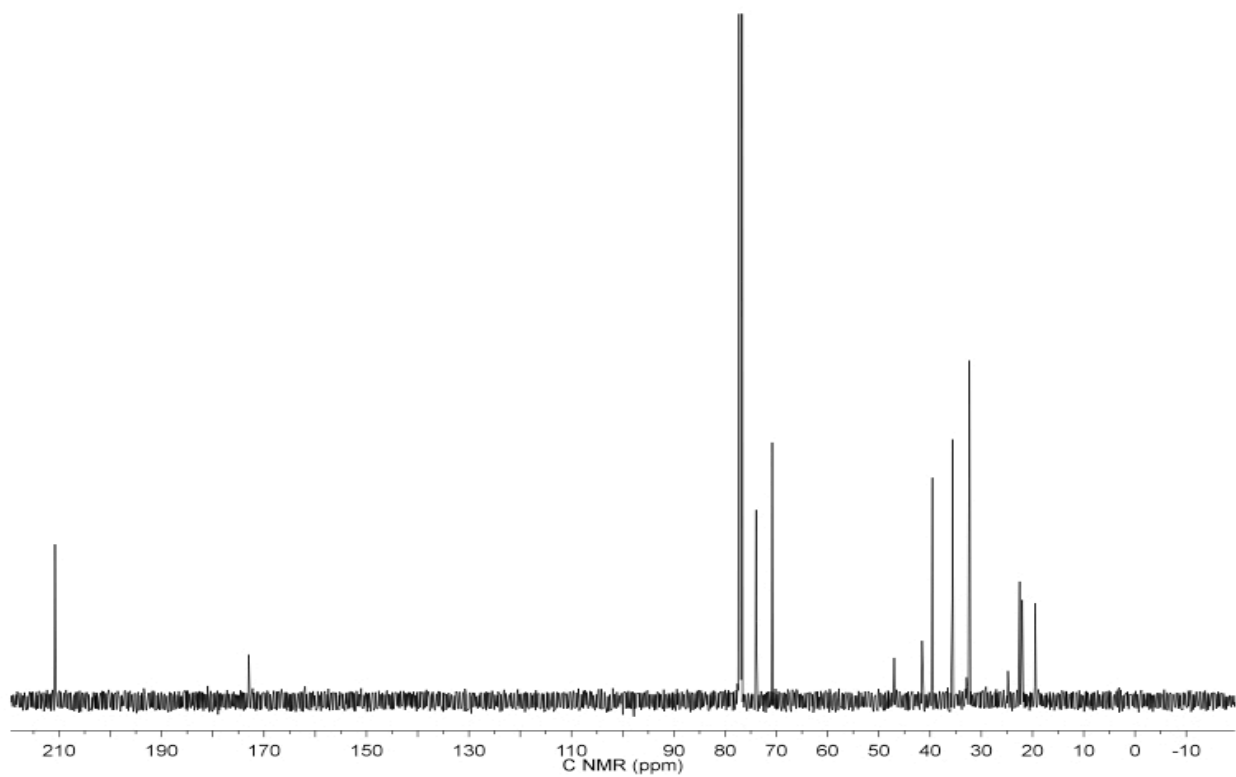
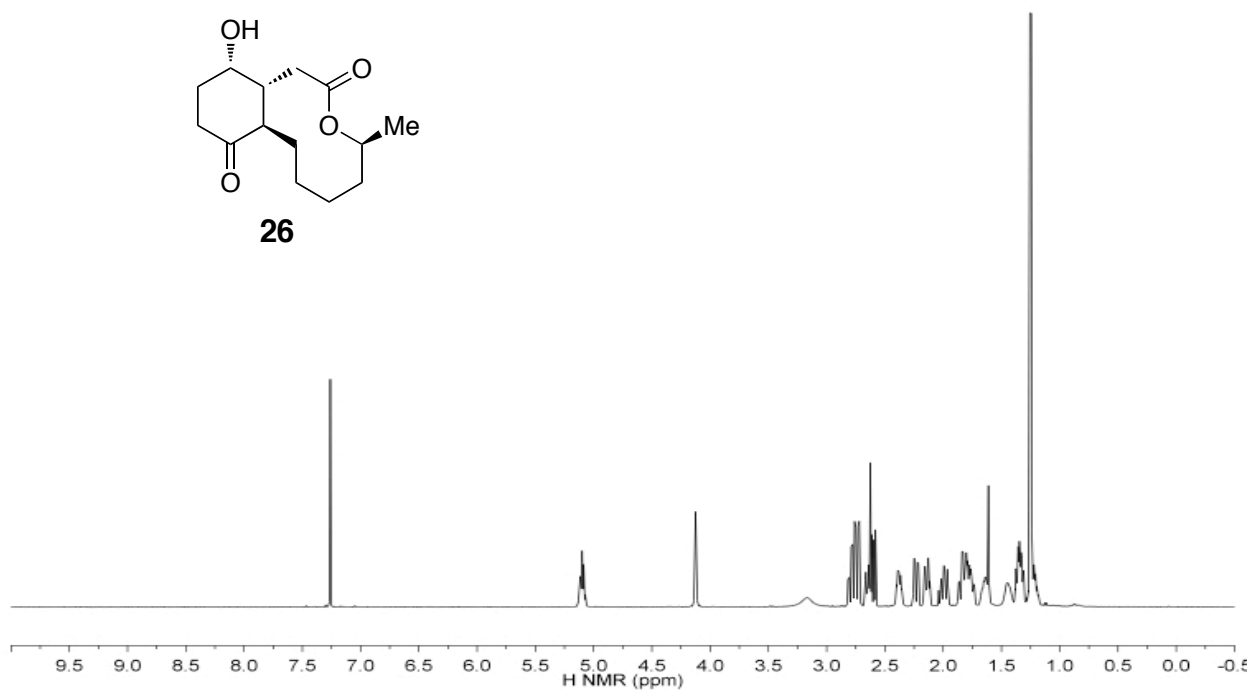
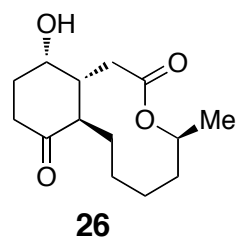


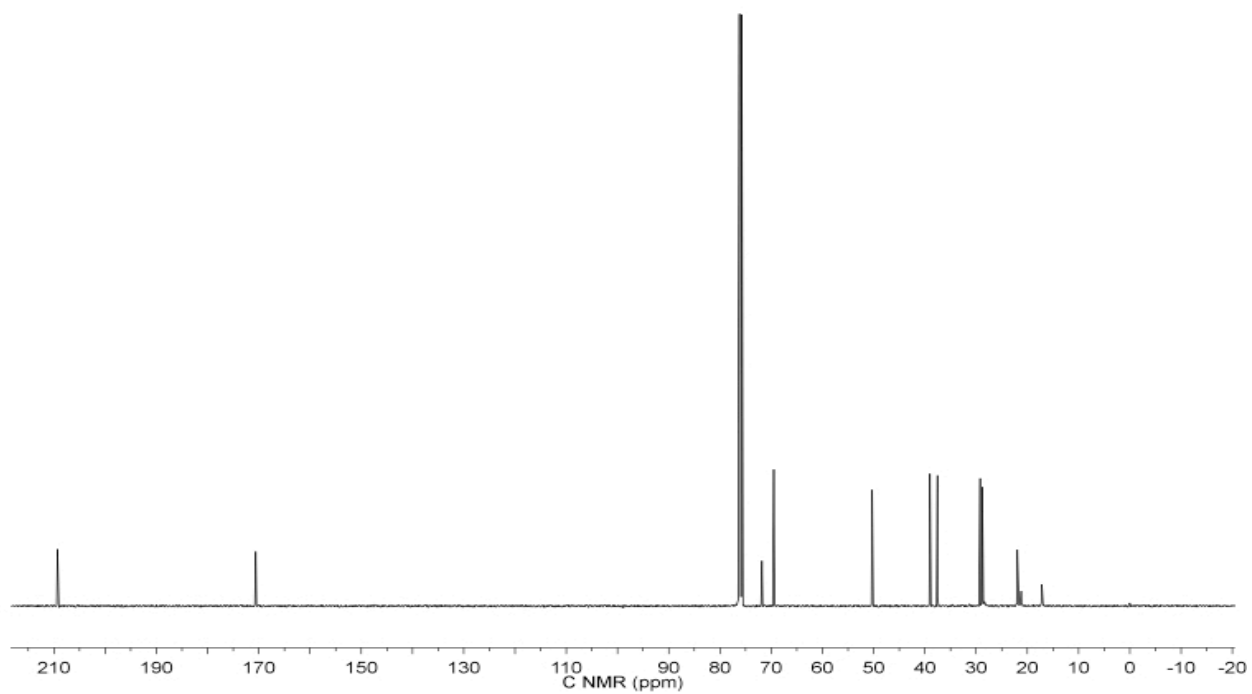
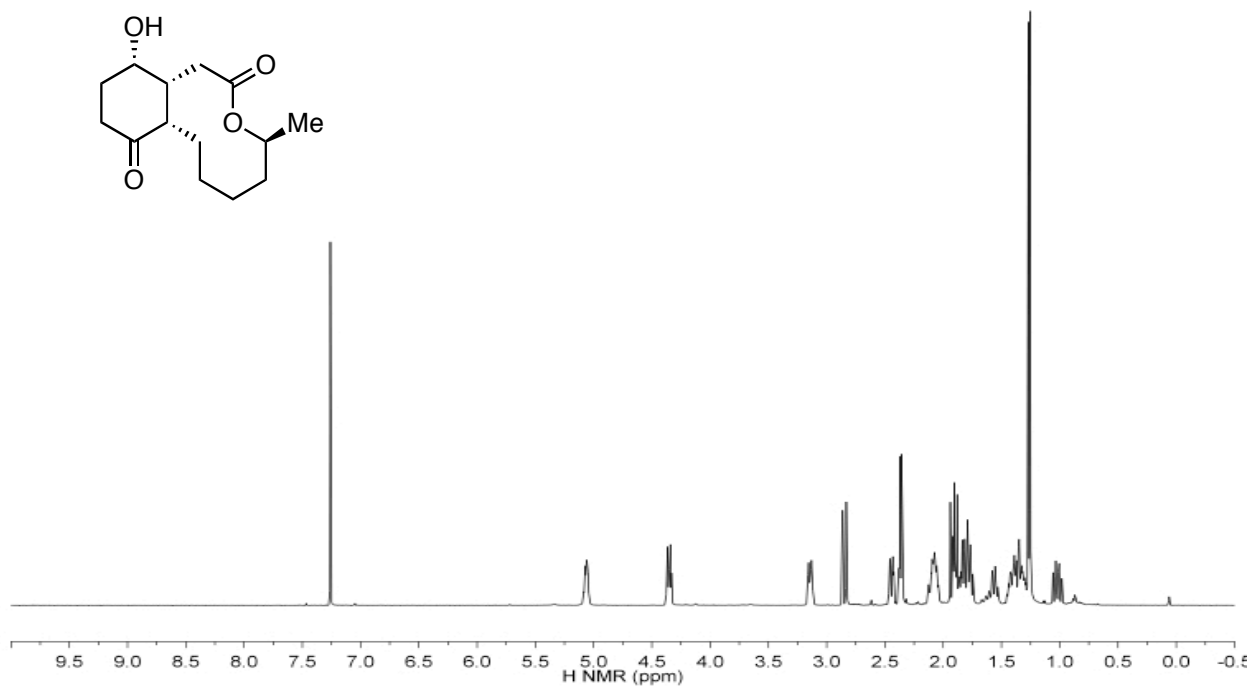
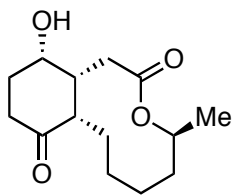


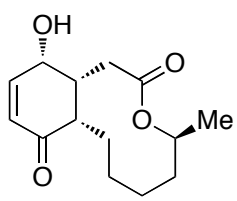




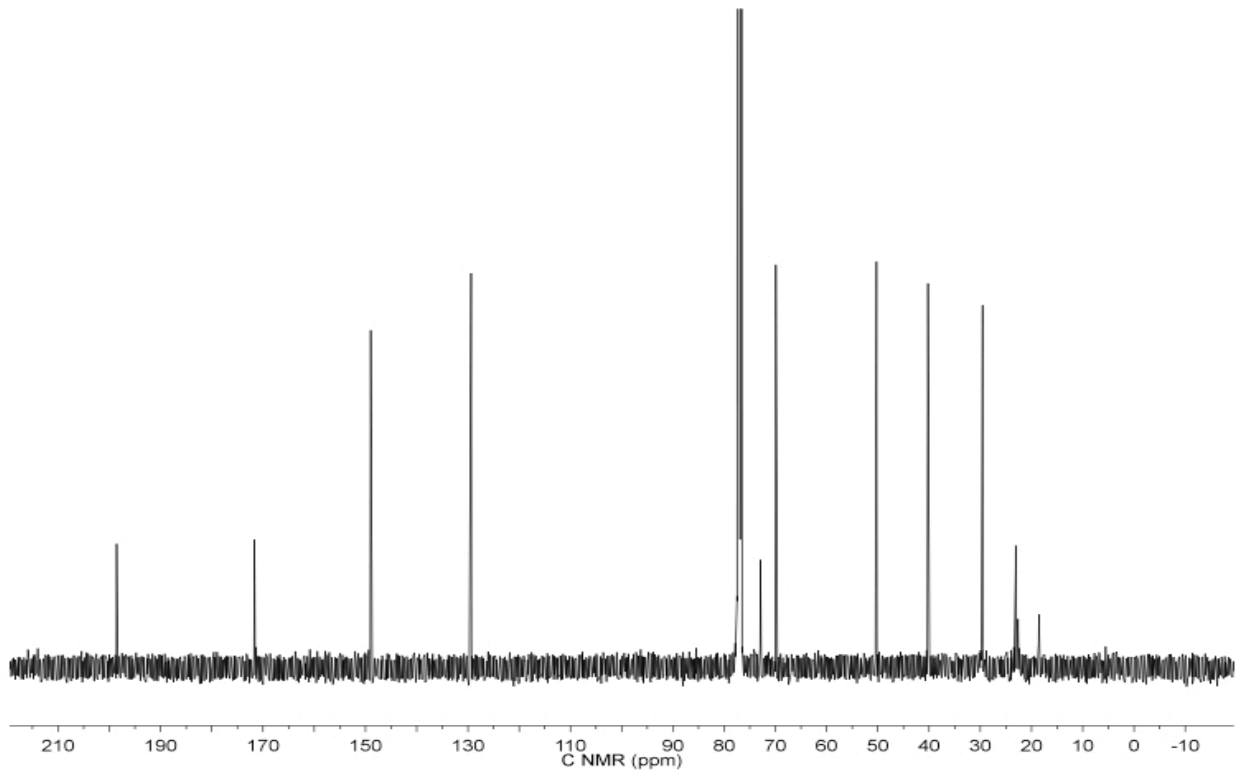
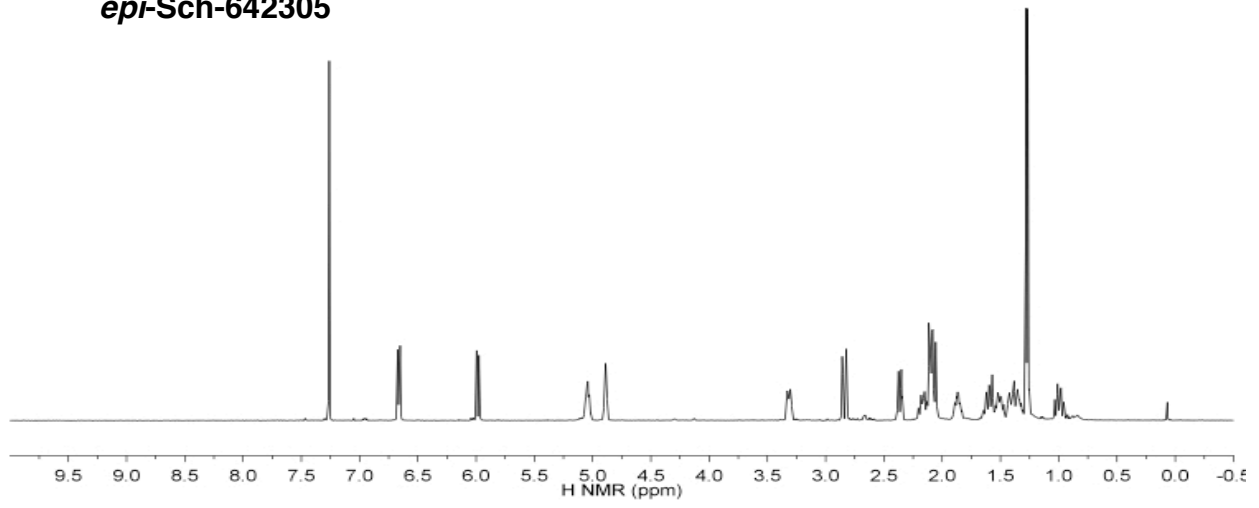


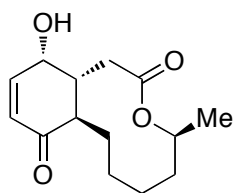




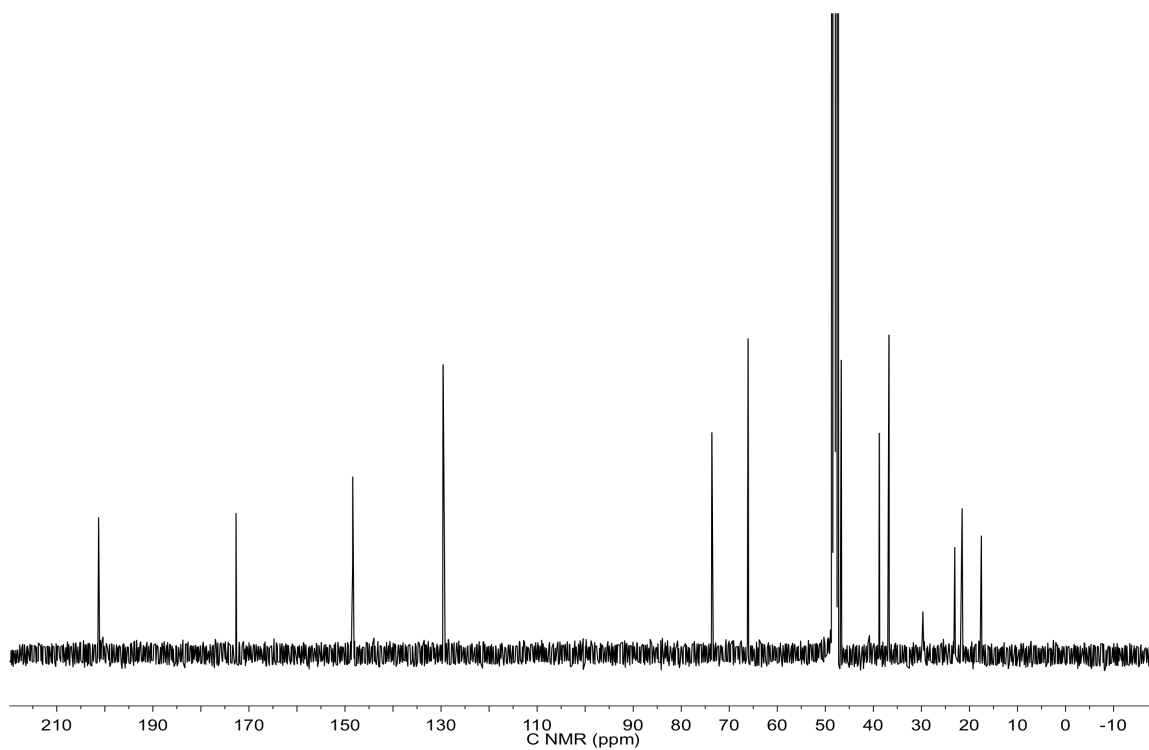
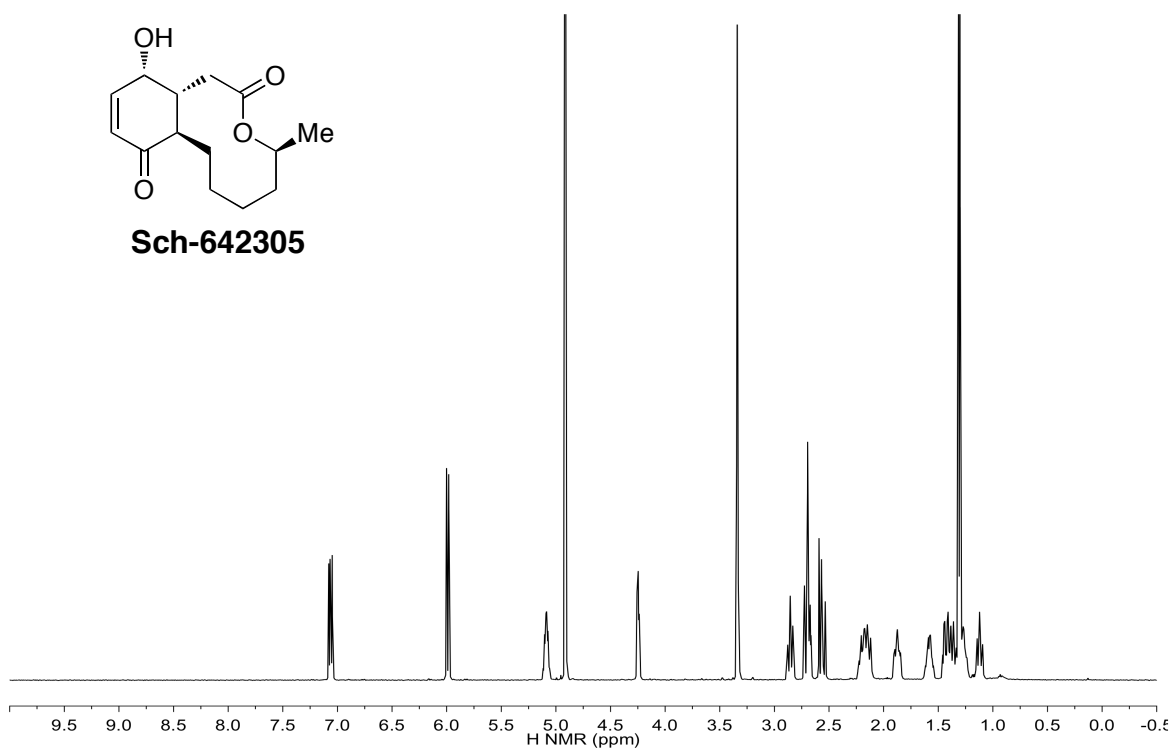


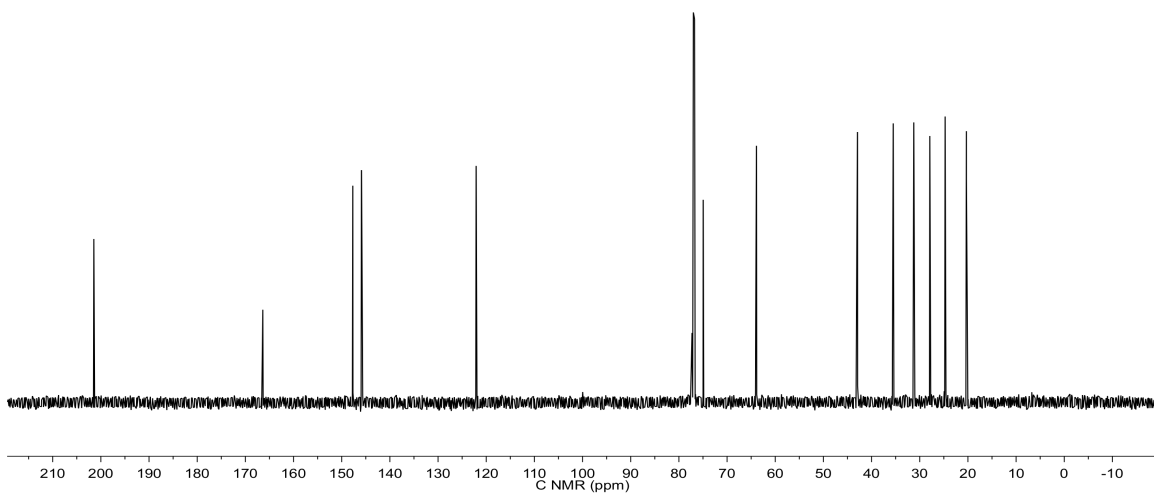
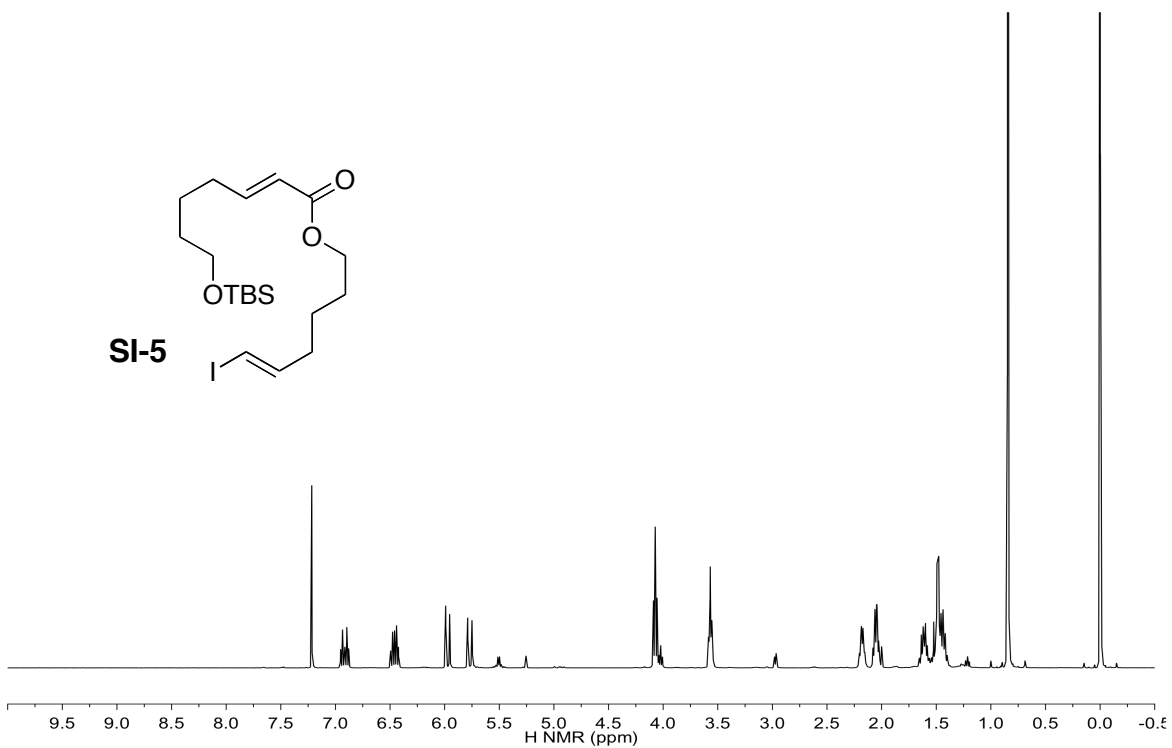
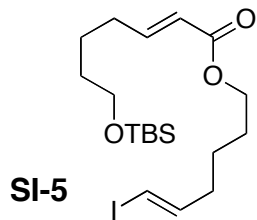
***epi*-Sch-642305**

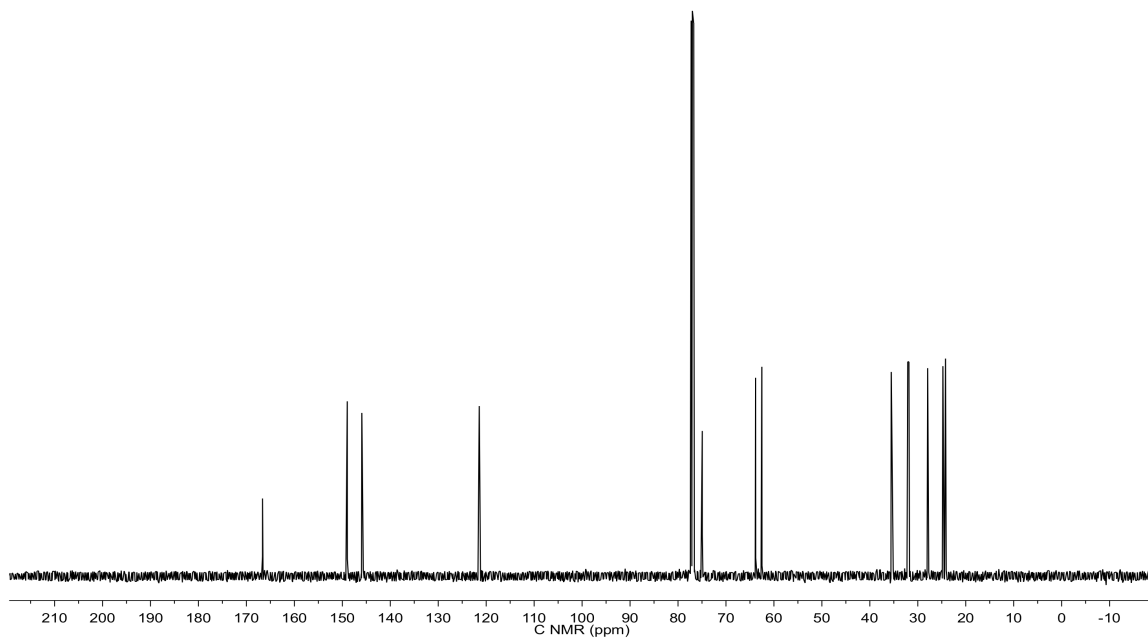
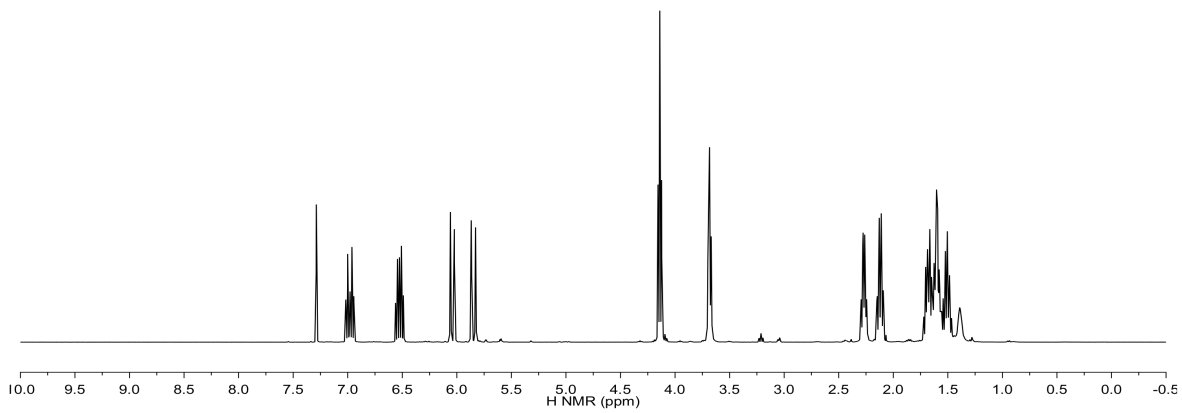
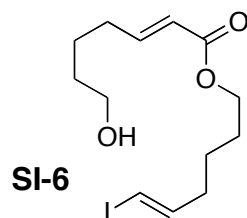


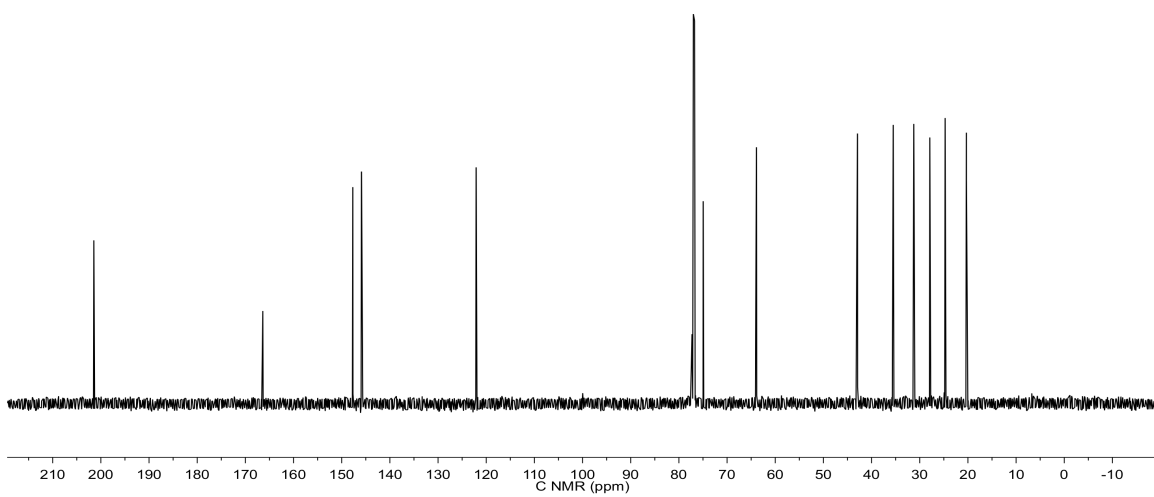
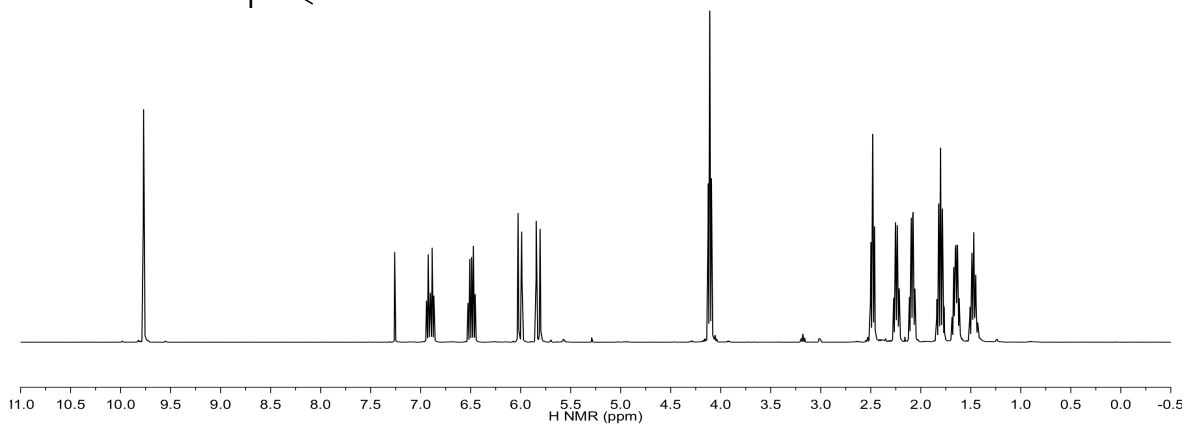
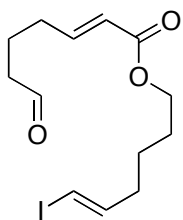


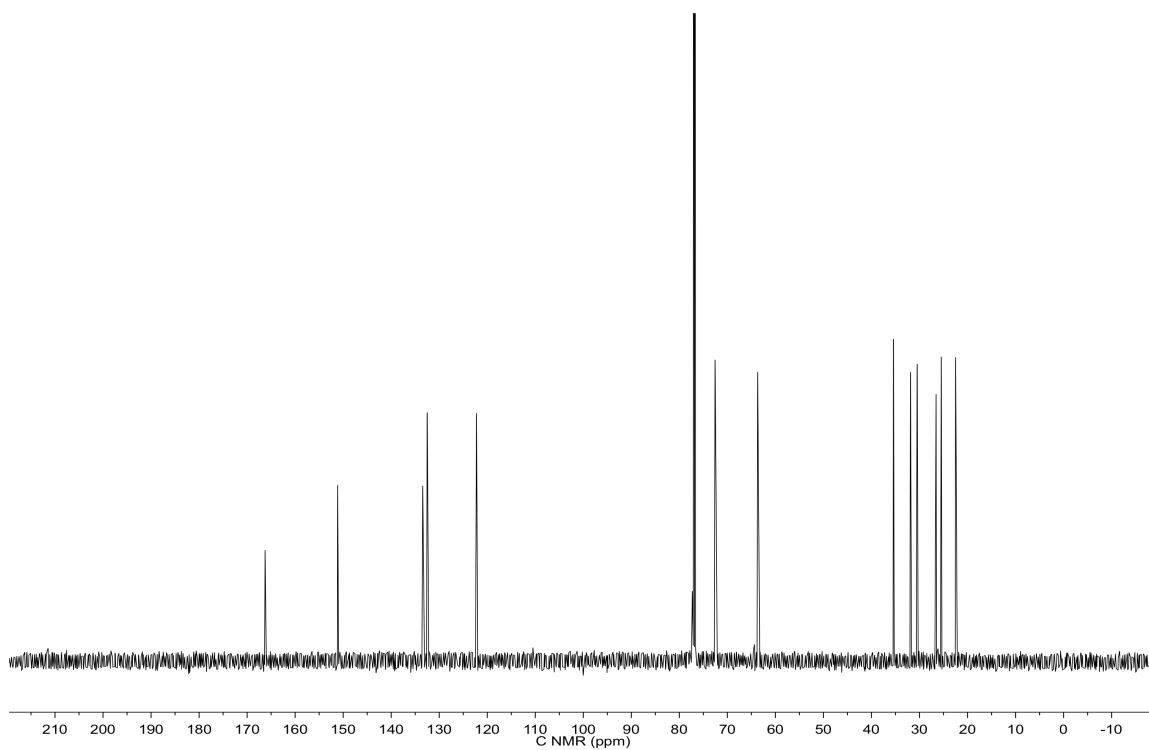
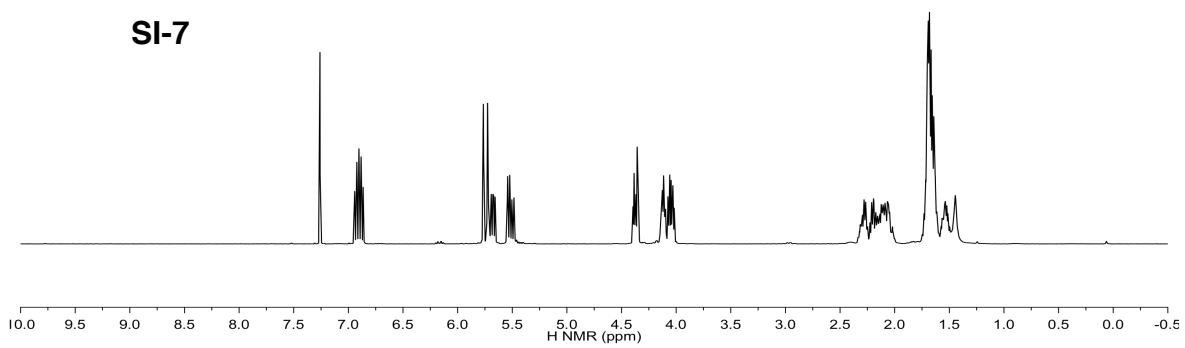
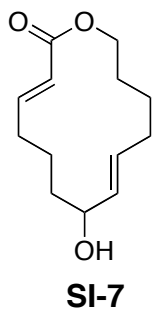
Sch-642305

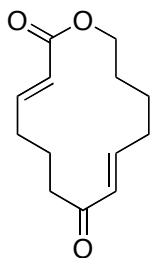




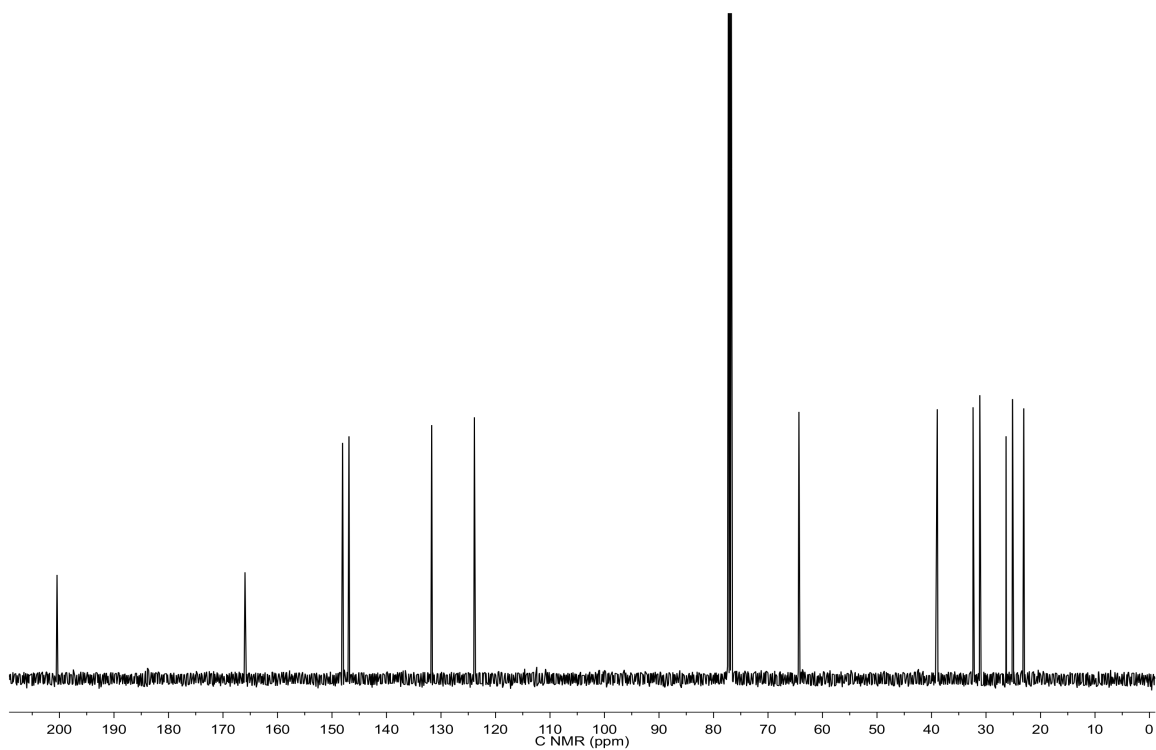
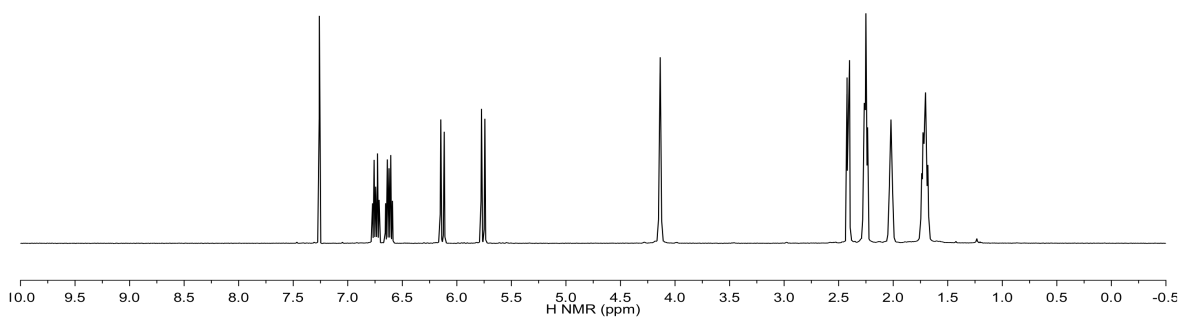


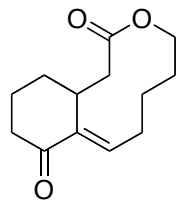






24





25

