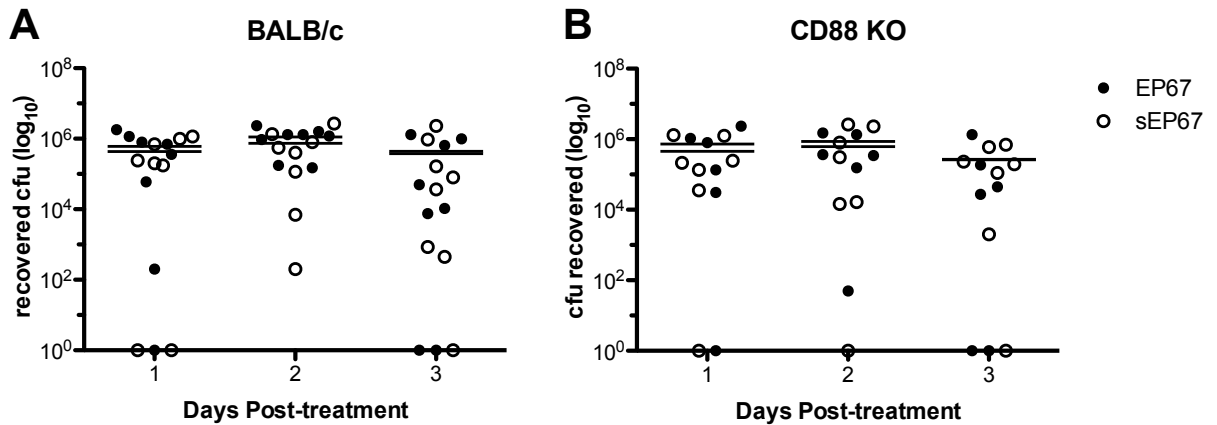


Supplemental Figure 1.



Supplemental Figure 1. EP67 treatment does not impact colonization of murine native vaginal flora *Enterococcus in vivo*. Approximately 1×10^7 cfu GBS was inoculated into the vaginal lumen of 8-week-old BALB/c mice (n = 8 per group). GBS was allowed to establish colonization for 48 hours prior to initial treatment with EP67 or sEP67. During GBS colonization and EP67 or sEP67 treatment, native *Enterococcus* was monitored by swabbing the vagina and enumerating recovered bacteria. (B) Same experiment protocol from (A) utilizing CD88 KO mice (n = 10 per group). Mice in which *Enterococcus* were not isolated were excluded from the data set.