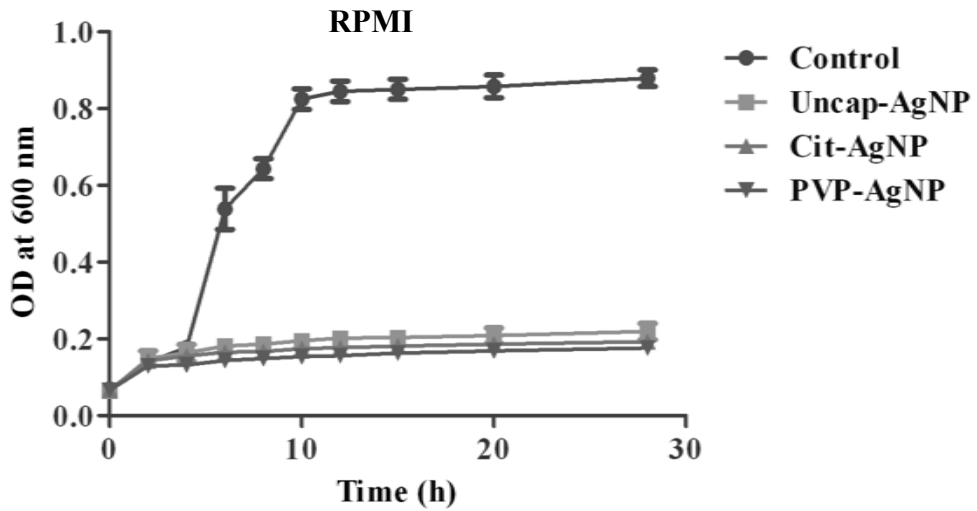


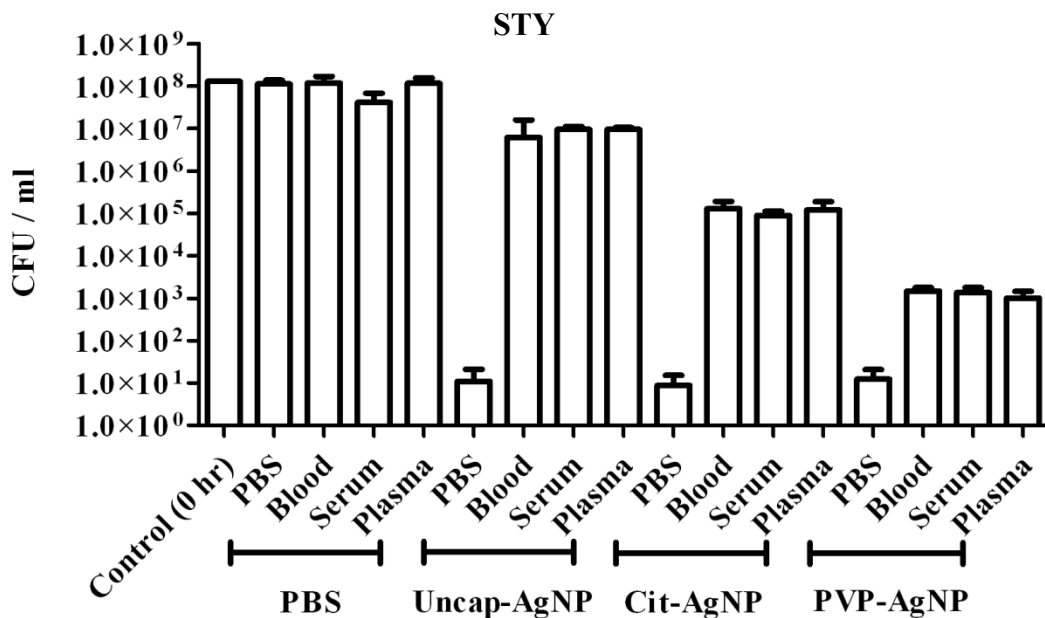
Supplementary FIG. 1.

A



Growth curve of STM was tested in RPMI media (without serum) by sub culturing overnight LB broth grown STM in 1:100 in respective media.

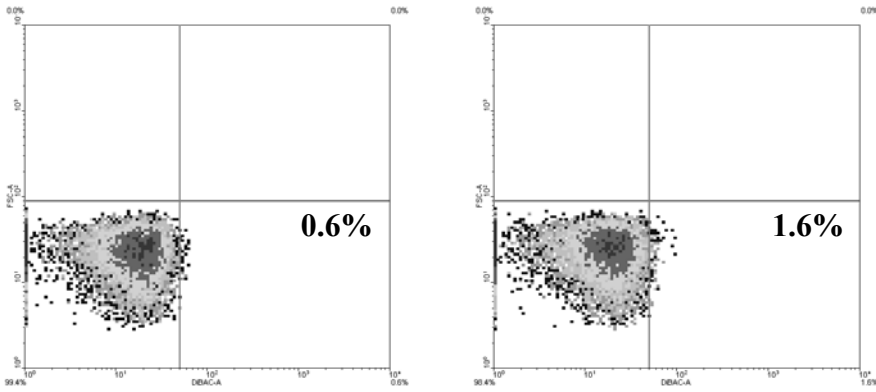
B



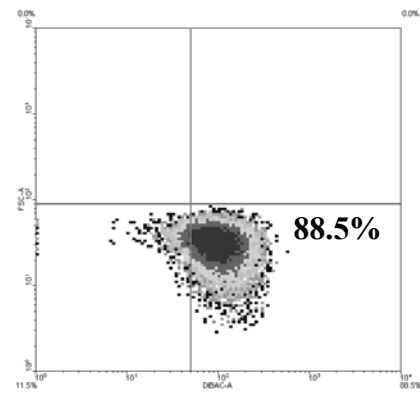
Antibacterial effect of different AgNPs to *S. Typhi* was tested in the presence of different components of human blood (whole blood, serum and plasma). Different AgNPs were incubated with these components for 2 h, serially diluted and plated in LB agar to check the antibacterial effect.

Supplementary FIG. 2.

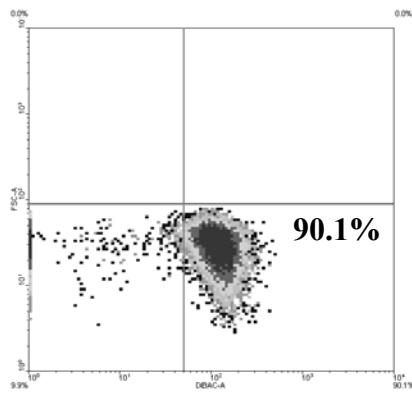
Control



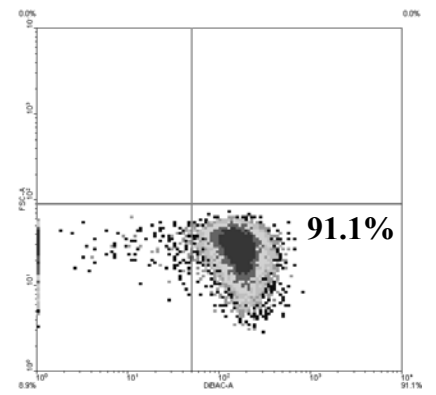
Uncap-AgNPs & BSA (-)



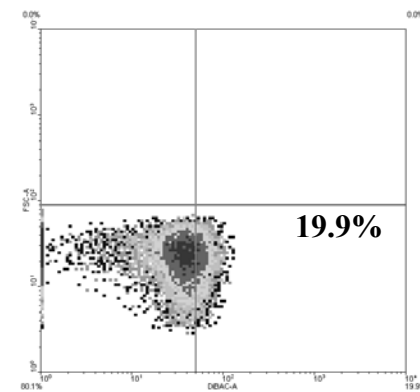
Cit-AgNPs & BSA (-)



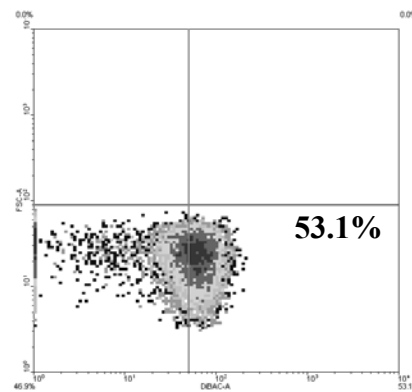
PVP-AgNPs & BSA (-)



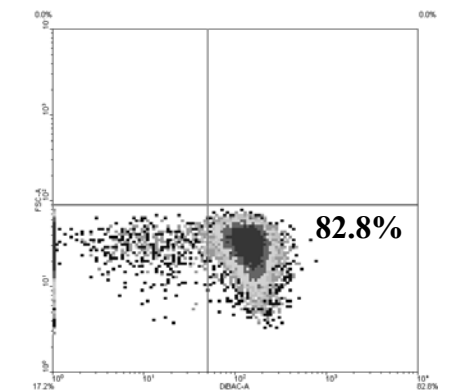
Uncap-AgNPs & BSA (+)



Cit-AgNPs & BSA (+)



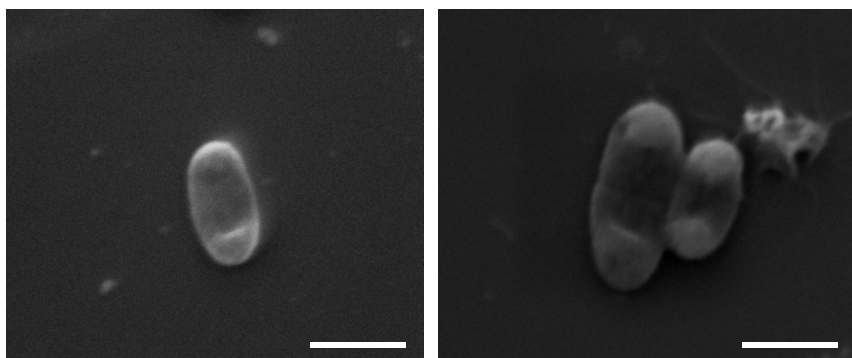
PVP-AgNPs & BSA (+)



STM was incubated with different AgNPs in the presence and absence of 3% BSA for 2h and stained with DiBAC. DiBAC positive cells are quantified by flow cytometry. Flow-cytometric data was analyzed with WinMDI 2.9.

Supplementary FIG. 3.

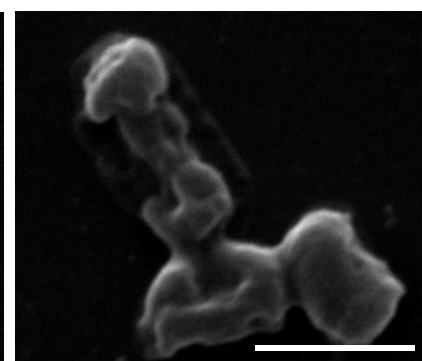
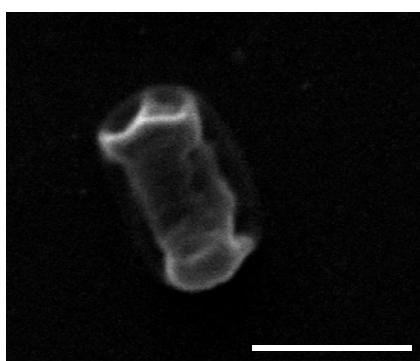
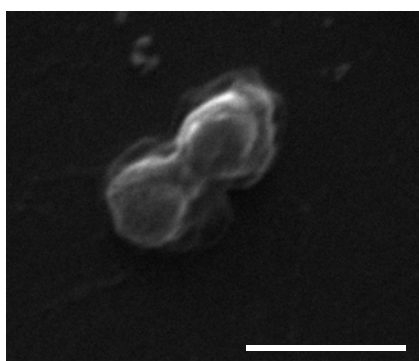
Control



Uncap-AgNPs & BSA (-)

Cit-AgNPs & BSA (-)

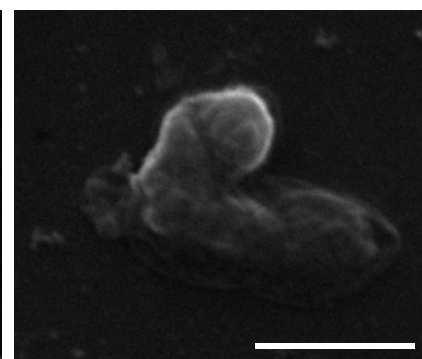
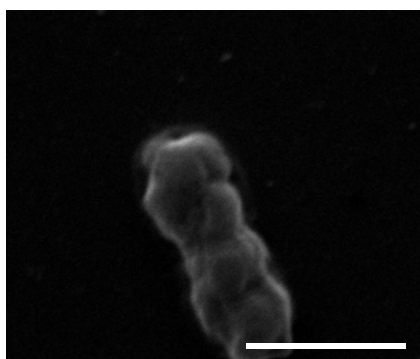
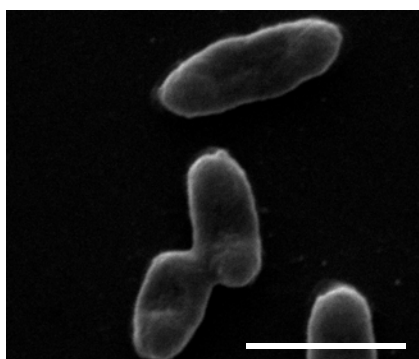
PVP-AgNPs & BSA (-)



Uncap-AgNPs & BSA (+)

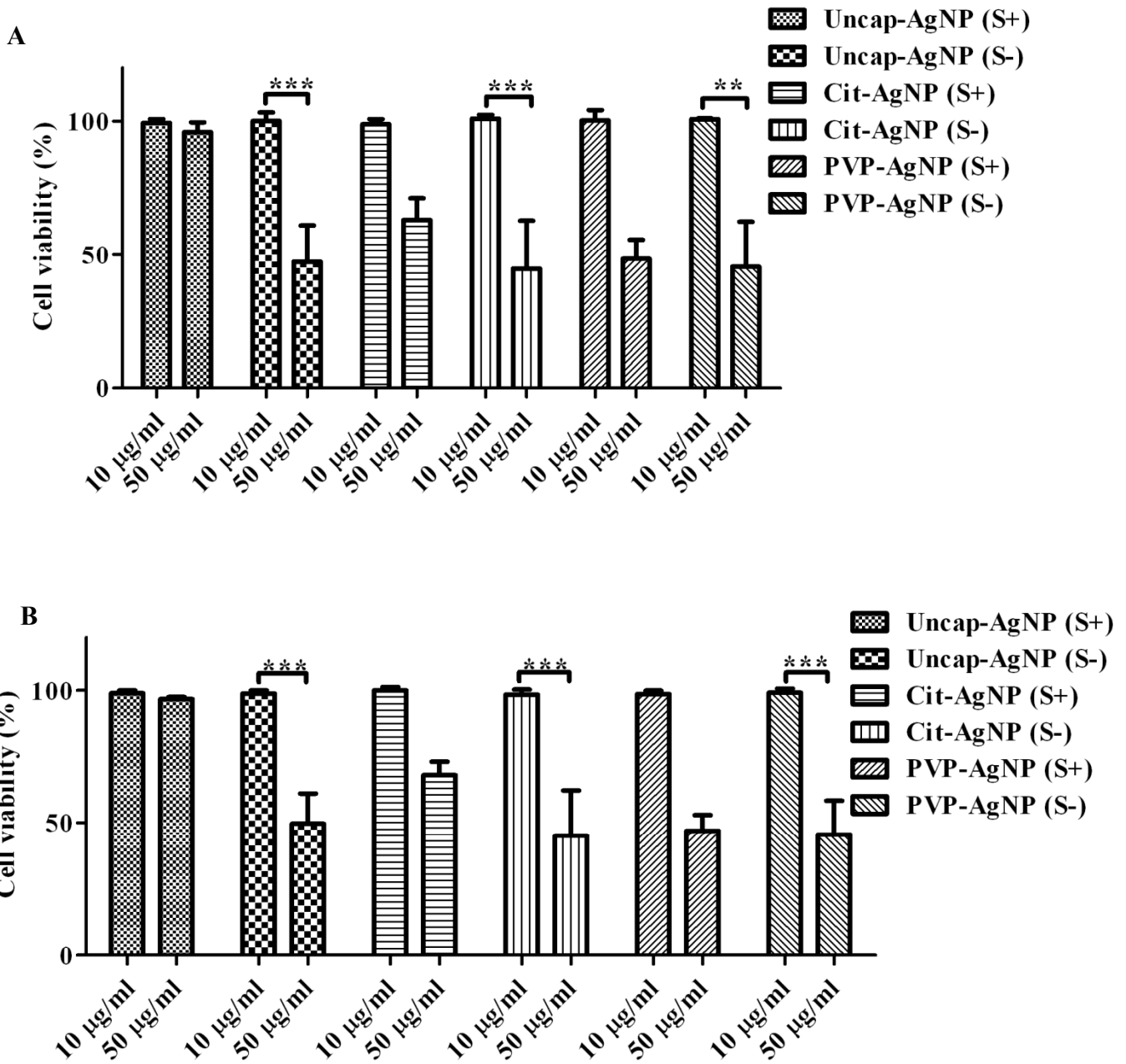
Cit-AgNPs & BSA (+)

PVP-AgNPs & BSA (+)



STM was incubated in the presence and absence of 3% BSA with uncap-AgNPs, cit-AgNPs and PVP-AgNPs and imaged with SEM for the visual damage caused by AgNPs. Scale bar – 2 μ m

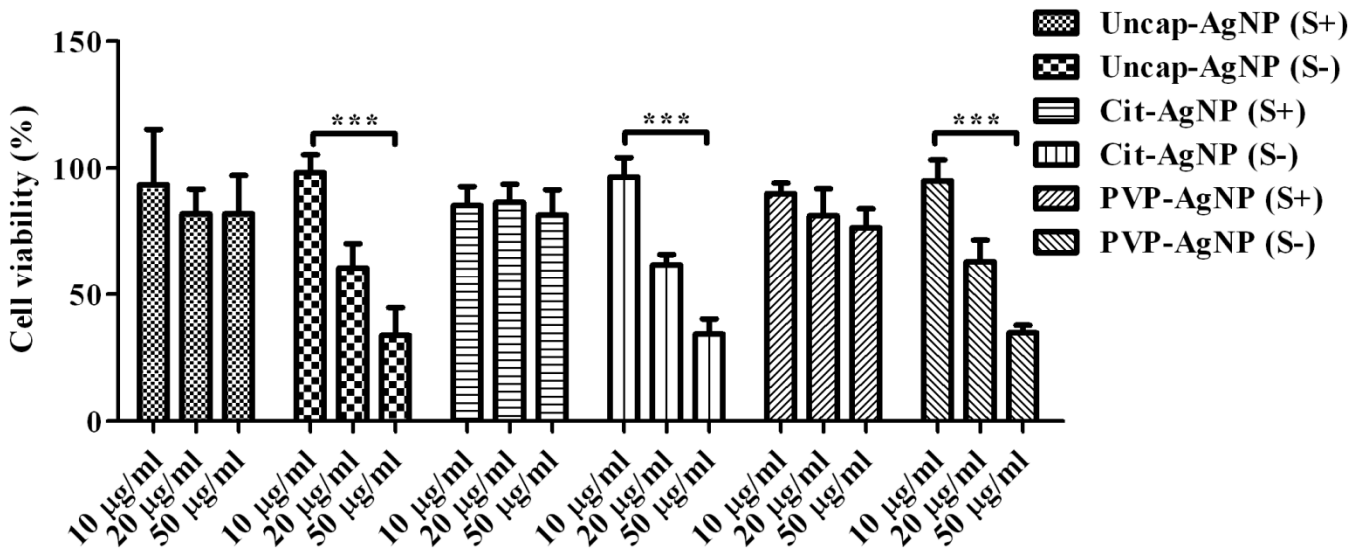
Supplementary FIG. 4.



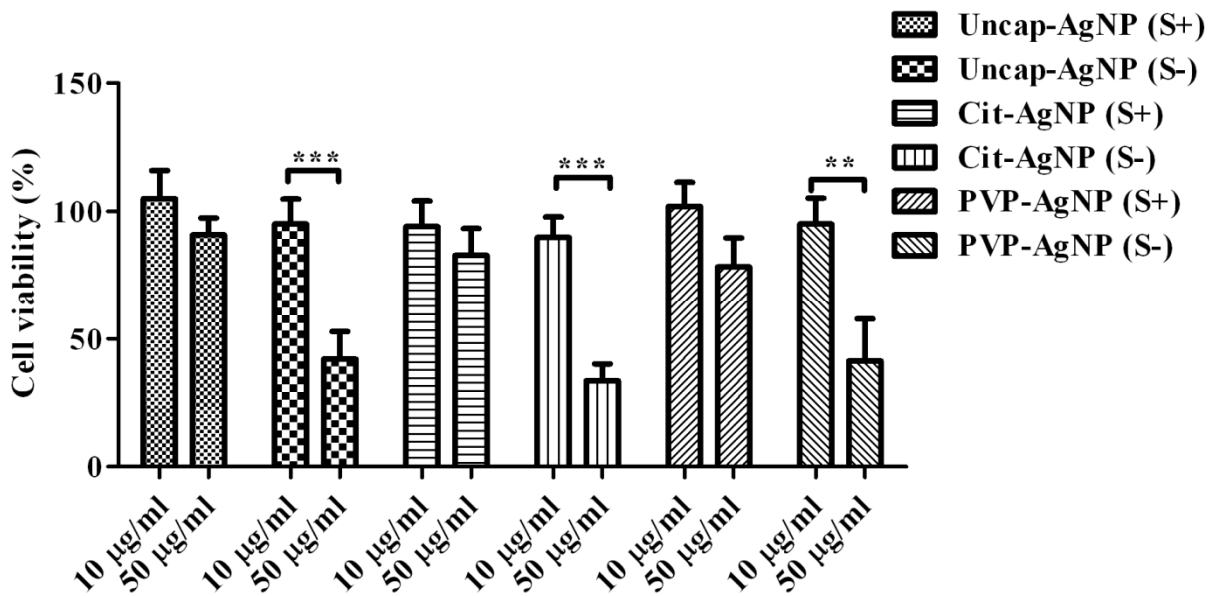
For trypan blue exclusion assay. RAW 264.7 (A) and Intestine 407 (B) were seeded in a 24 well plate (1×10^5 cells). The cells were incubated with 10 $\mu\text{g/ml}$ and 50 $\mu\text{g/ml}$ concentrations of AgNPs in the presence and absence of serum (10%) for 24 h in DMEM. 0.4% trypan blue was added to the cells and incubated for 3 min at room temperature. The number of dye-excluding cells were counted using hemocytometer. Values that are significantly different by Student's *t* test are indicated by the bracket and asterisks as follows: **, $P < 0.05$, ***, $P < 0.0005$.

Supplementary FIG. 5.

A



B



MTT assay for cytotoxic assessment in RAW 264.7 (A) and Intestine 407 (B) cell lines. Cells were incubated with different AgNPs in the presence (S+) and absence (S-) of serum for 24 h and cytotoxicity effect of different concentration of AgNPs were checked using MTT assay. Values that are significantly different by Student's *t* test are indicated by the bracket and asterisks as follows: **, $P < 0.05$, ***, $P < 0.0005$.