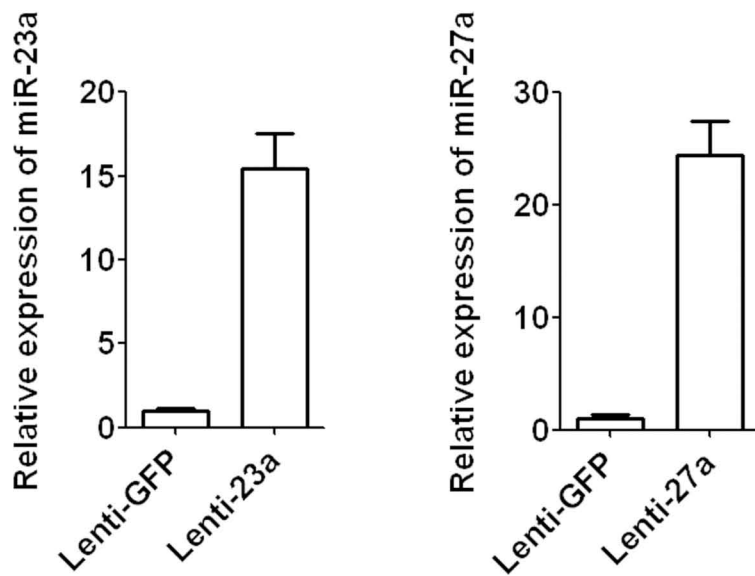


A



B

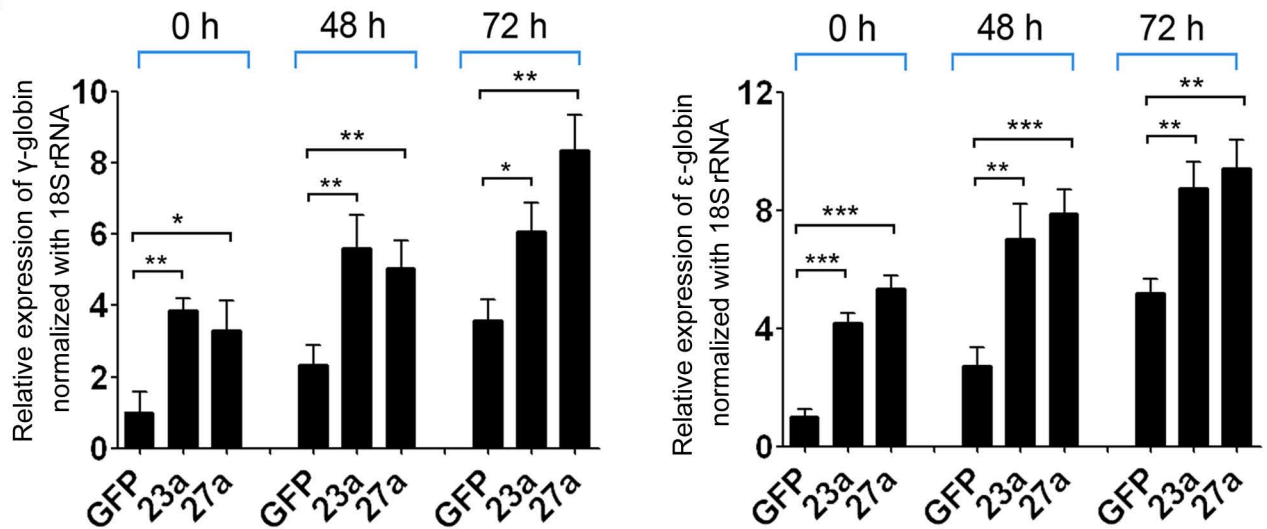


FIG. S2 Infection of lentivirus expressing miR-23a or 27a up-regulated  $\beta$ -like globin genes in K562 cells

(A) Relative expression of miR-23a and 27a in K562 cells infected with lentivirus expressing miR-23a or 27a. (B) Q-PCR analysis of  $\gamma$ - and  $\epsilon$ -globin gene expression normalized with 18S rRNA in lentivirus-infected K562 cells.