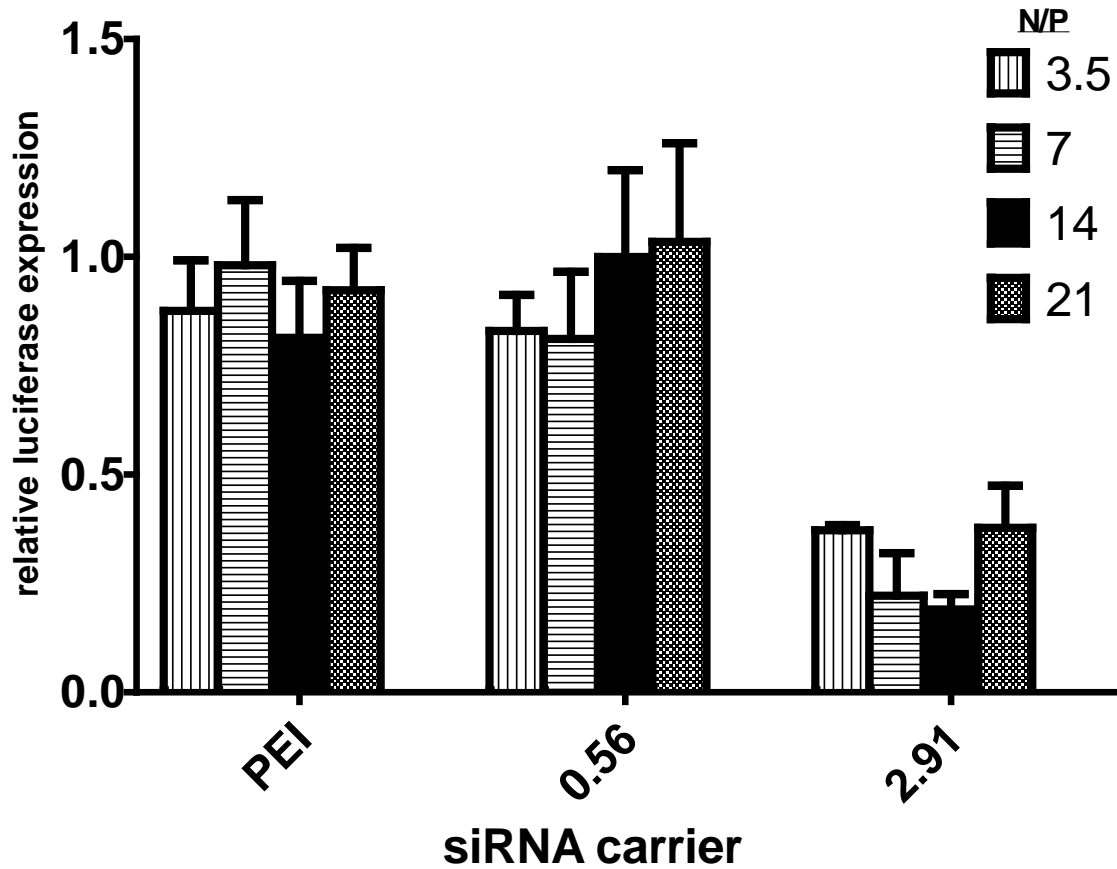


Supplementary Information

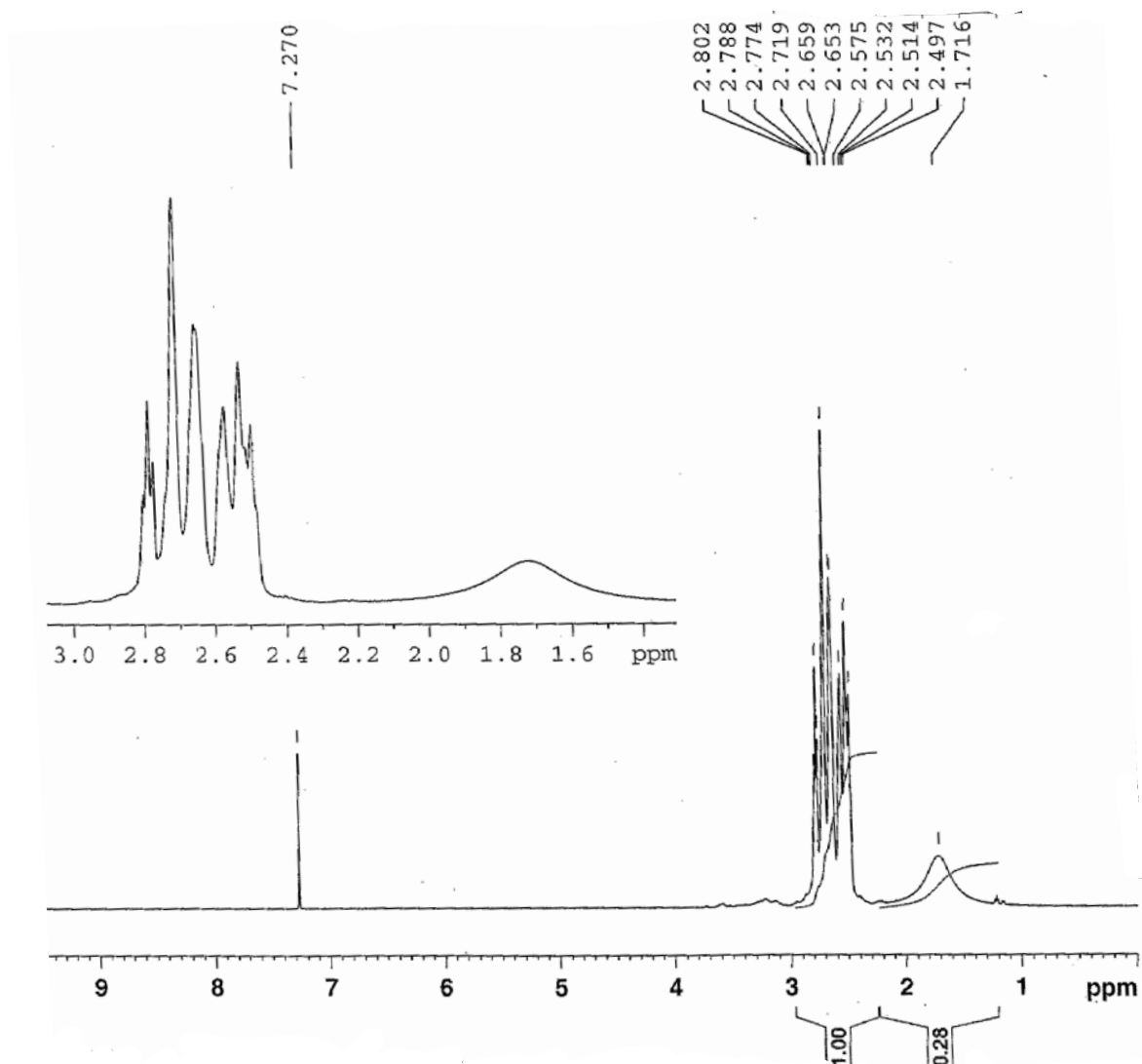
S1. Luciferase expression at various N/P ratios

Luciferase expressing HeLa cells were incubated with particles complexed with siRNA at various N/P ratios. Following these experiments an N/P of 14 was selected.

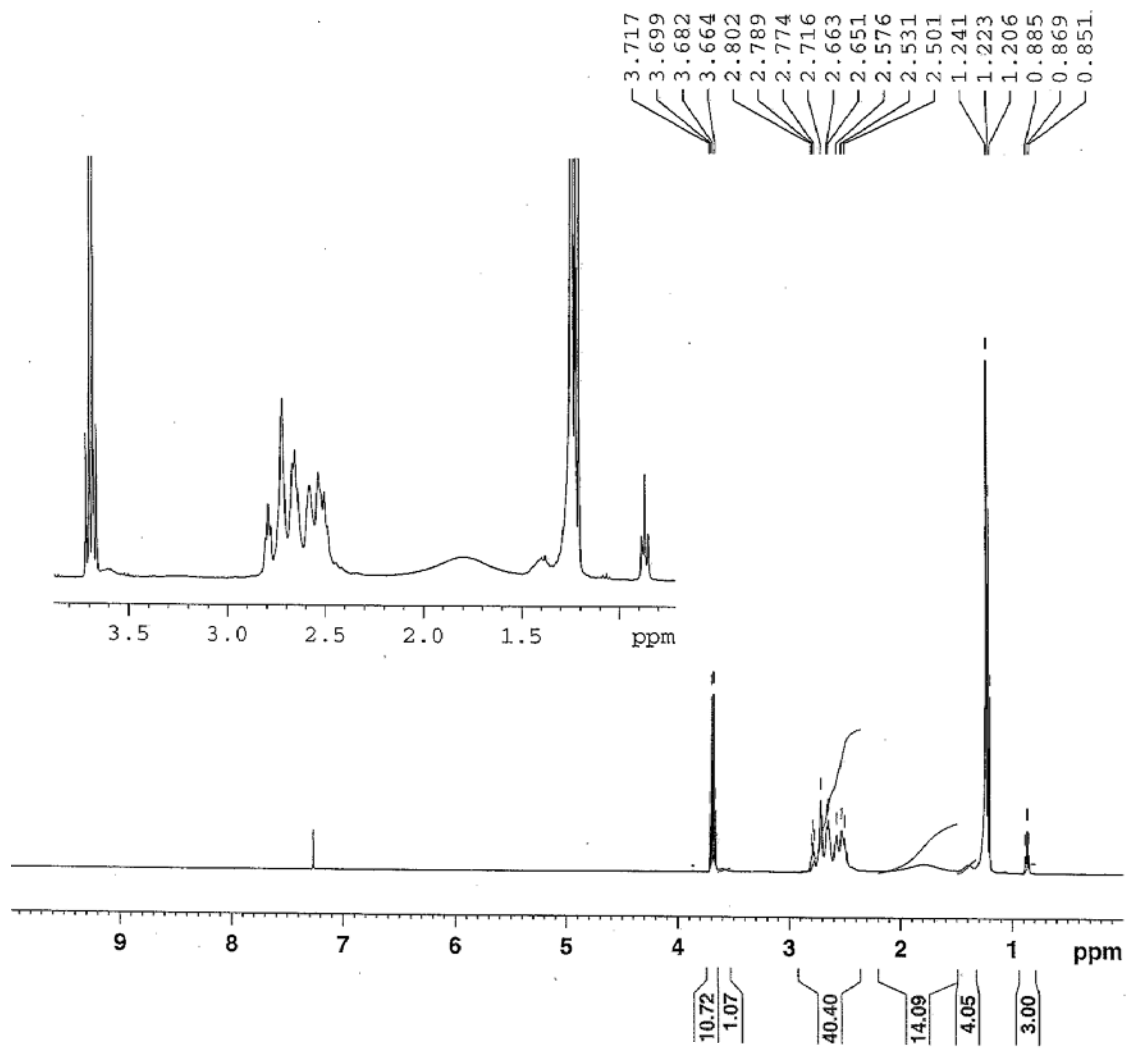


S2. (A) NMR analysis of the product - PEI

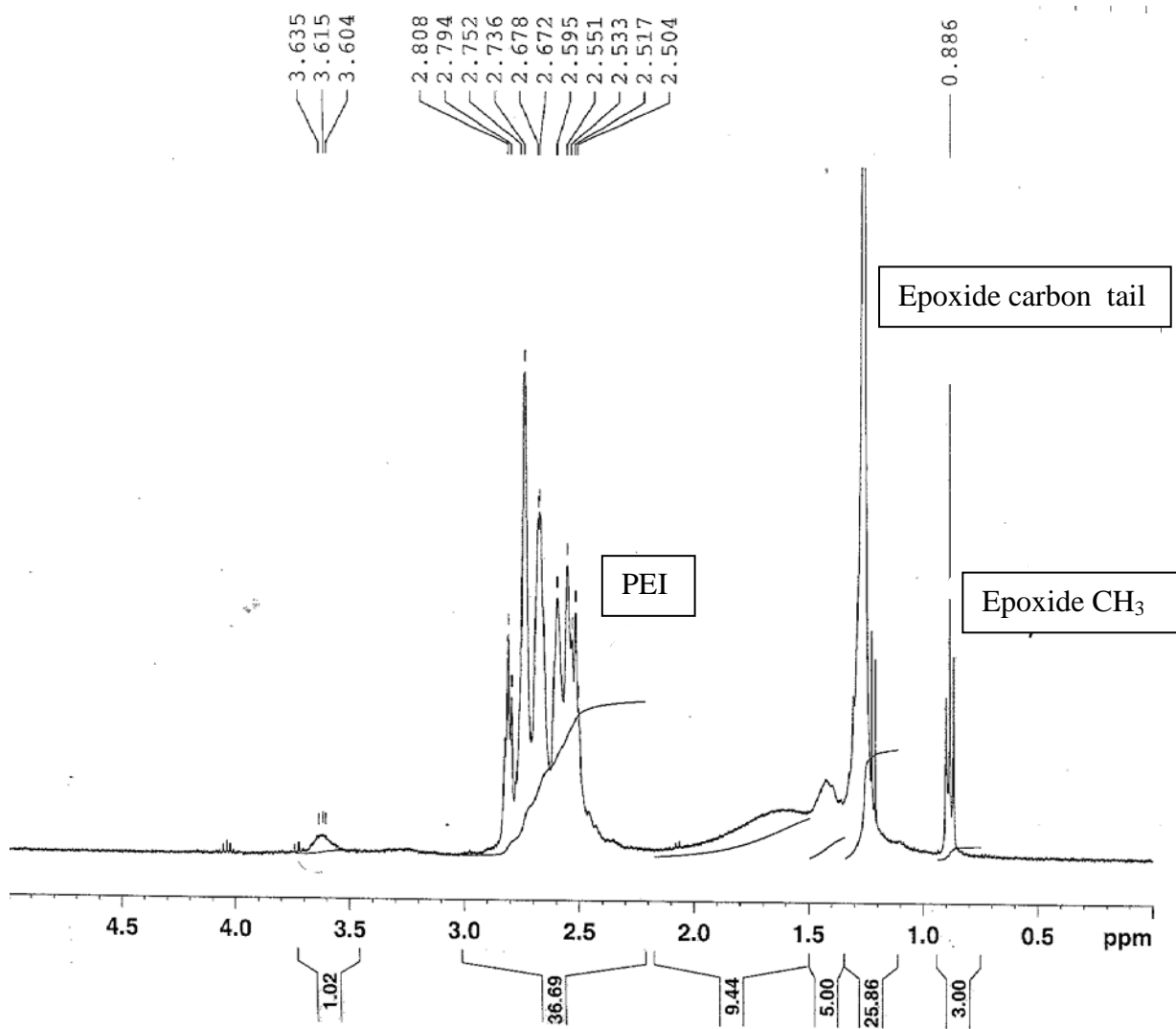
The product was dissolved in deuterated DMSO and characterized by $^1\text{H-NMR}$ (400 MHz, Bruker, Billerica, MA), structures coincide with previous publications on similar compounds.



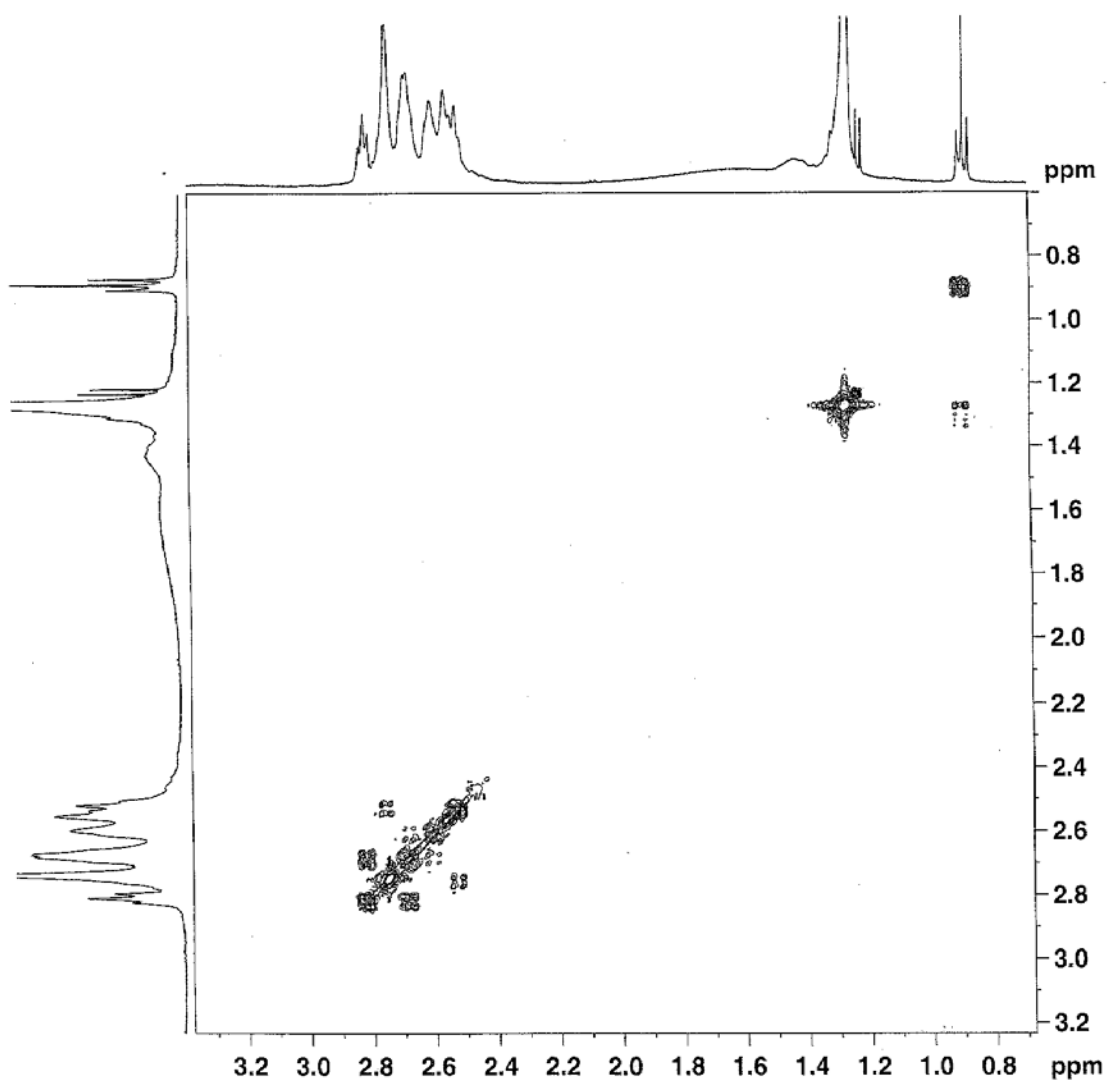
S2. (B) NMR analysis of the product – conjugated PEI



S2. (C) NMR analysis of the product – conjugated PEI

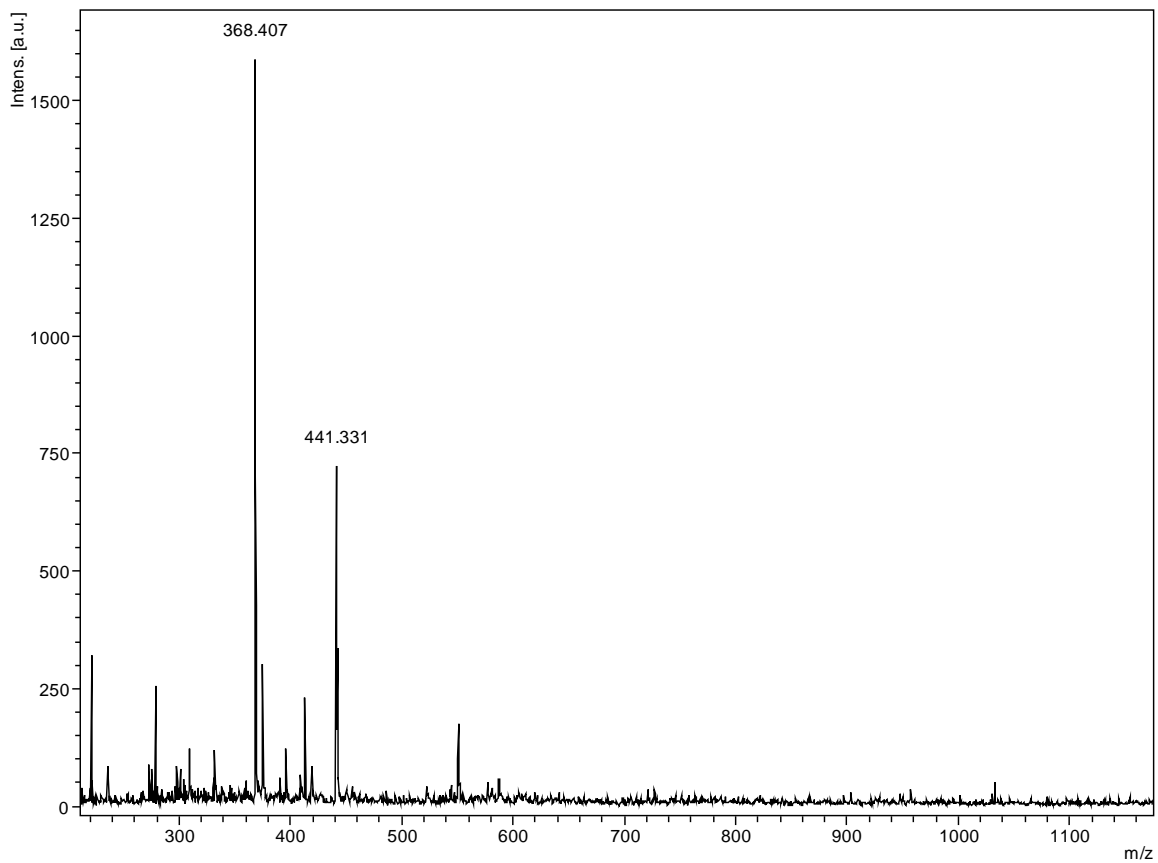


S2. (D) 2D NMR analysis of the product – conjugated PEI



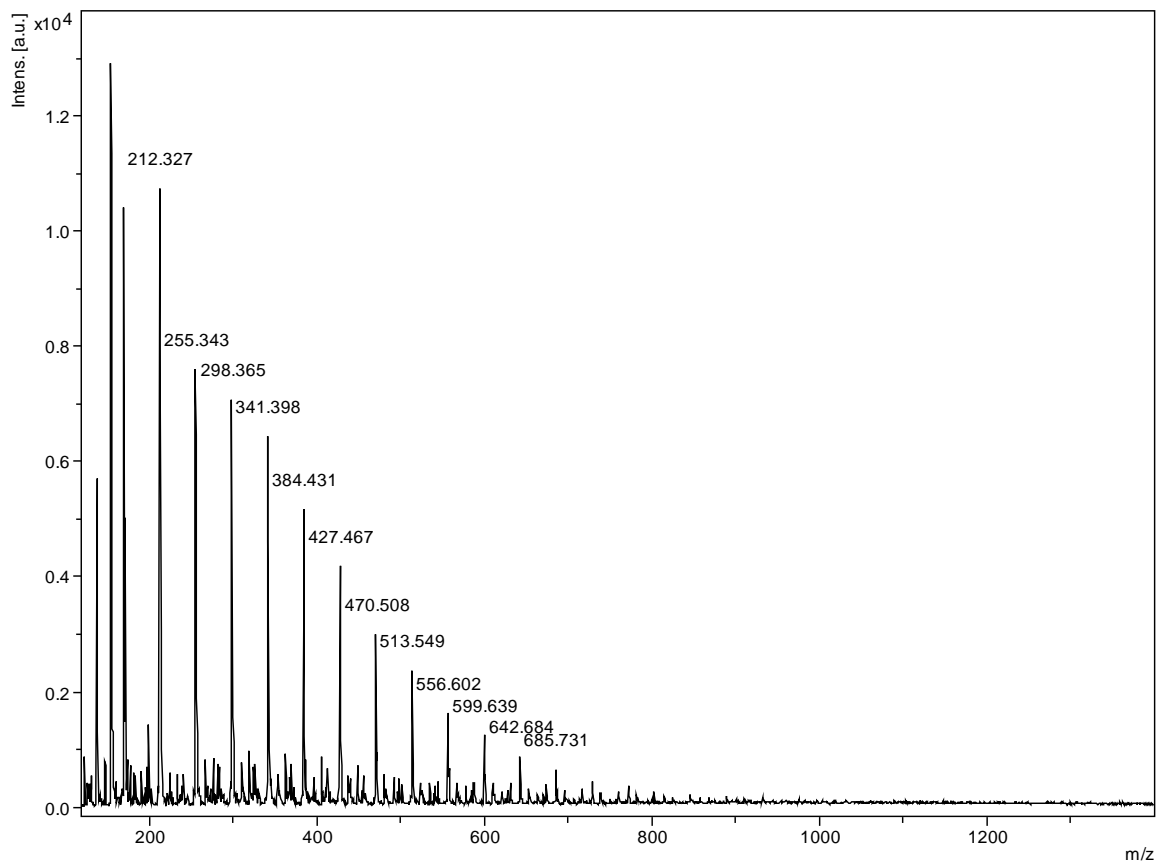
S3. (A) MALDI TOF Mass Spectrometry analysis of the product – PEI

The product was characterized using matrix-assisted laser desorption ionization time of flight (MALDI-TOF) mass spectrometry.



S3. (B) MALDI TOF Mass Spectrometry analysis of the product – conjugated PEI

(0.28)



S3. (C) MALDI TOF Mass Spectrometry analysis of the product – conjugated PEI

(1.96)

