

Supplementary Figure S4: Positional variability in gap domain features.

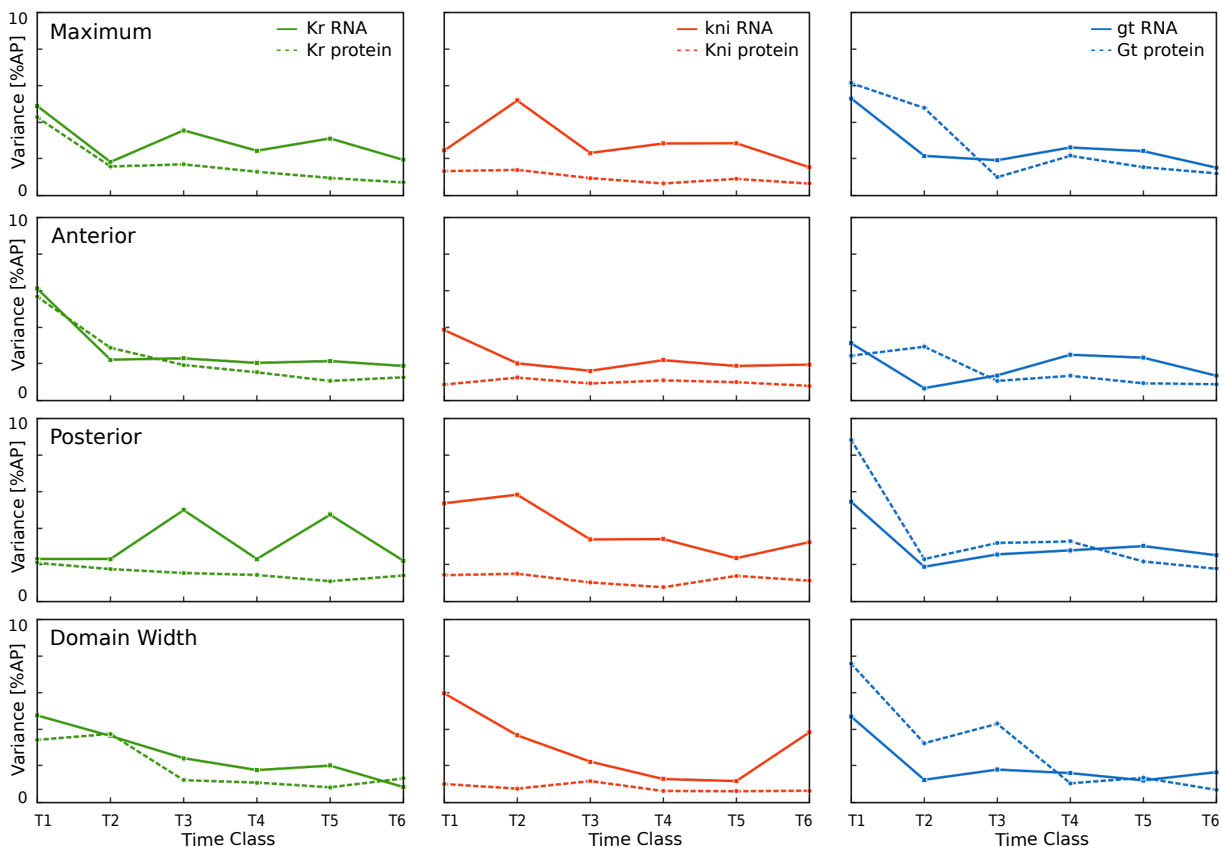


Figure S4. Positional variability in gap domain features. This figure shows standard deviations for the position of characteristic features of the central *Kr* domain (left), the abdominal *kni* domain (center), and the posterior *gt* domain (right; see also Supplementary Table S1). Data for mRNA shown as solid lines, for protein as dashed lines. ‘Maximum’ corresponds to the domain peak or maximum; ‘Anterior’ is the position of the anterior boundary, ‘Posterior’ that of the posterior boundary (determined as the position of 50% maximum concentration levels in each domain); ‘Domain width’ corresponds to the distance between anterior and posterior boundaries. Positions are indicated in % A–P embryo length. We only plot time points T1–T6, as low mRNA expression levels at T7/T8 make a precise quantification of variability impossible at those stages.