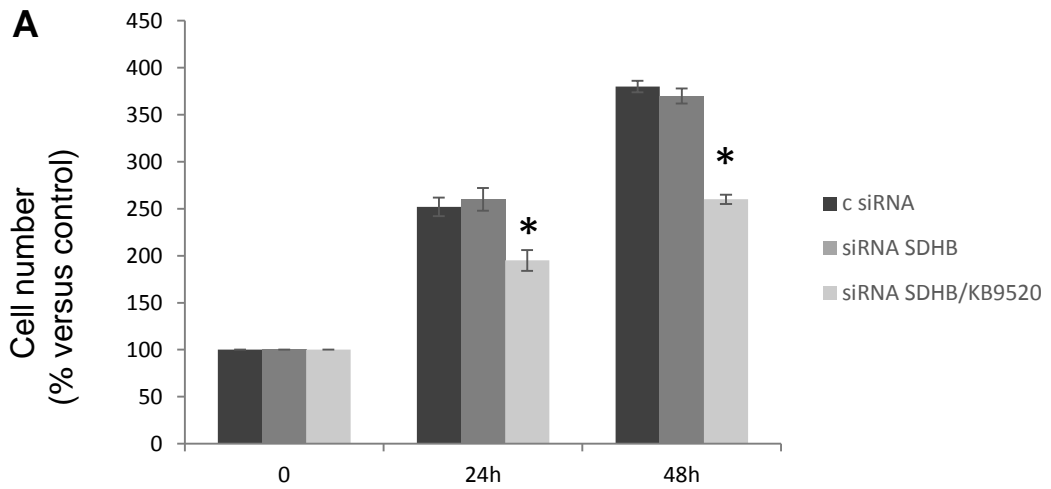


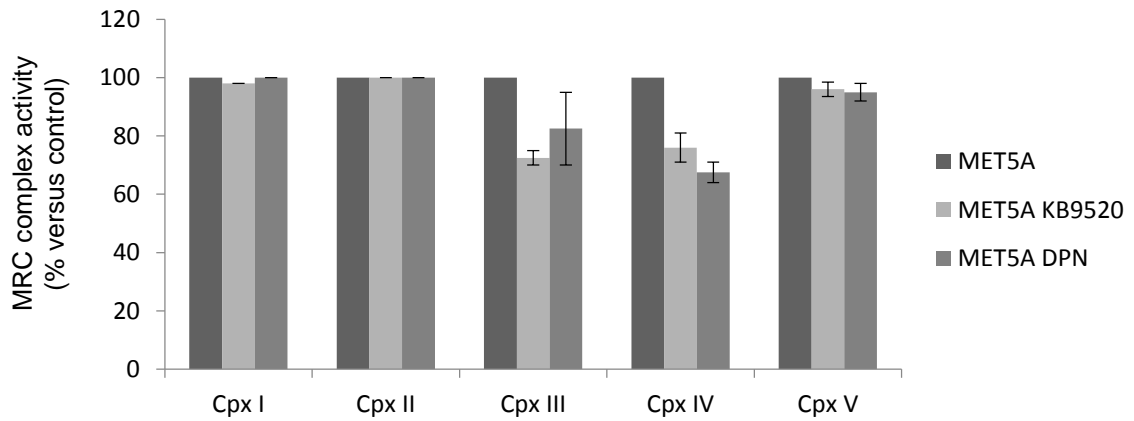
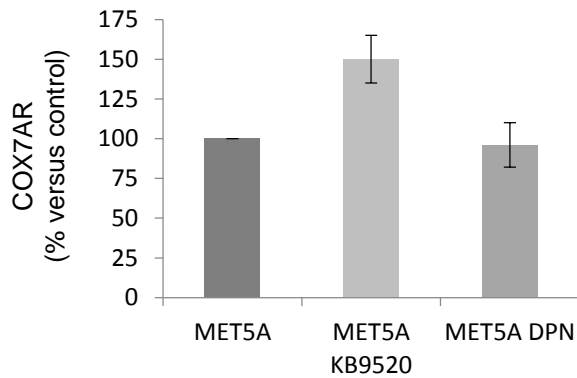
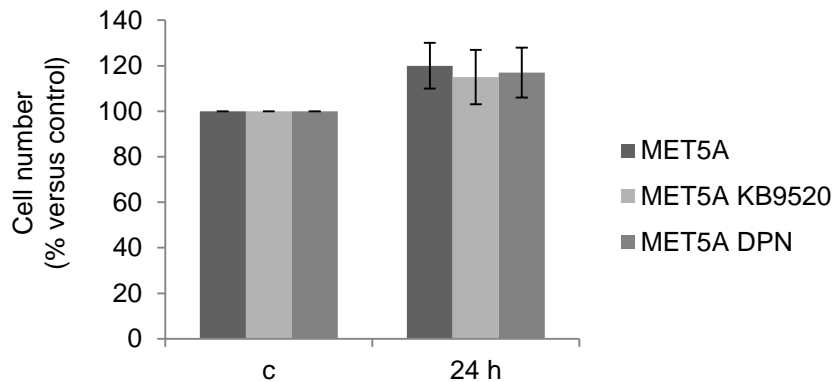
### Supplementary Figure 1

**A)** A representative Western blot analysis of mitochondrial respiratory chain subunits expression in Mock, ERβ over-expressing, ERβ silenced and ERβ DBD mut expressing REN cells. **B)** Spectrophotometric evaluation of MRC complexes enzymatic activities in Mock, ERβ and ERβ DBD mut expressing REN cells. **C)** COX7AR expression evaluated by Real Time PCR in Mock, ERβ and ERβ DBD mut expressing REN cells.



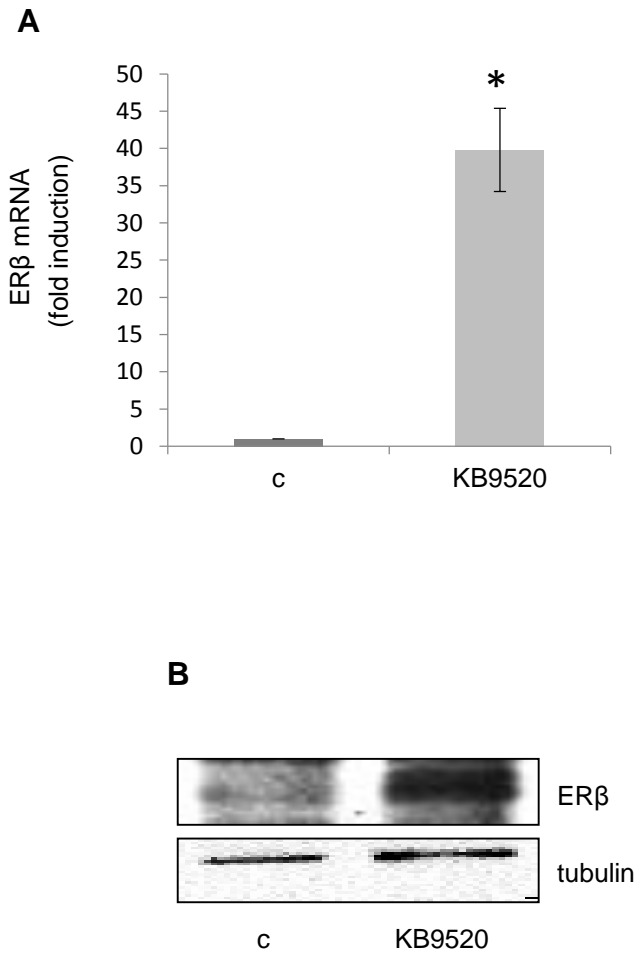
### Supplementary Figure 2

**A)** The bar graph compares growth of non-specific control siRNA (c siRNA) or SDHB silenced cells (siRNA SDHB)  $\pm$ 10 nM KB9520, 24 or 48 hours. Each graph is representative of three independent experiments. Each bar represents mean  $\pm$  SD. \*  $P < 0.05$ .

**A****B****C**

### Supplementary Figure 3

**A)** Spectrophotometric evaluation of MRC complexes enzymatic activities in MET5A cells, treated with 10 nM KB9520 or DPN, 24 hours. **B)** COX7AR expression evaluated by Real Time PCR experiments in MET5A cells treated with 10 nM KB9520 or DPN, 24 hours. **C)** The bar graph compares growth of MET5A cells treated with 10 nM KB9520 or DPN, 24 hours. Each graph is representative of three independent experiments. Each bar represents mean  $\pm$  SD.



#### Supplementary Figure 4

**A)** ERβ expression evaluated by Real Time PCR and **B)** Western Blot analysis in tumors from REN cells injected mice (pools of three) treated with vehicle or KB9520 for 20 days. The graph is representative of three independent experiments. Each bar represents mean  $\pm$  SD. \*  $P < 0.05$ .