

Fig S4

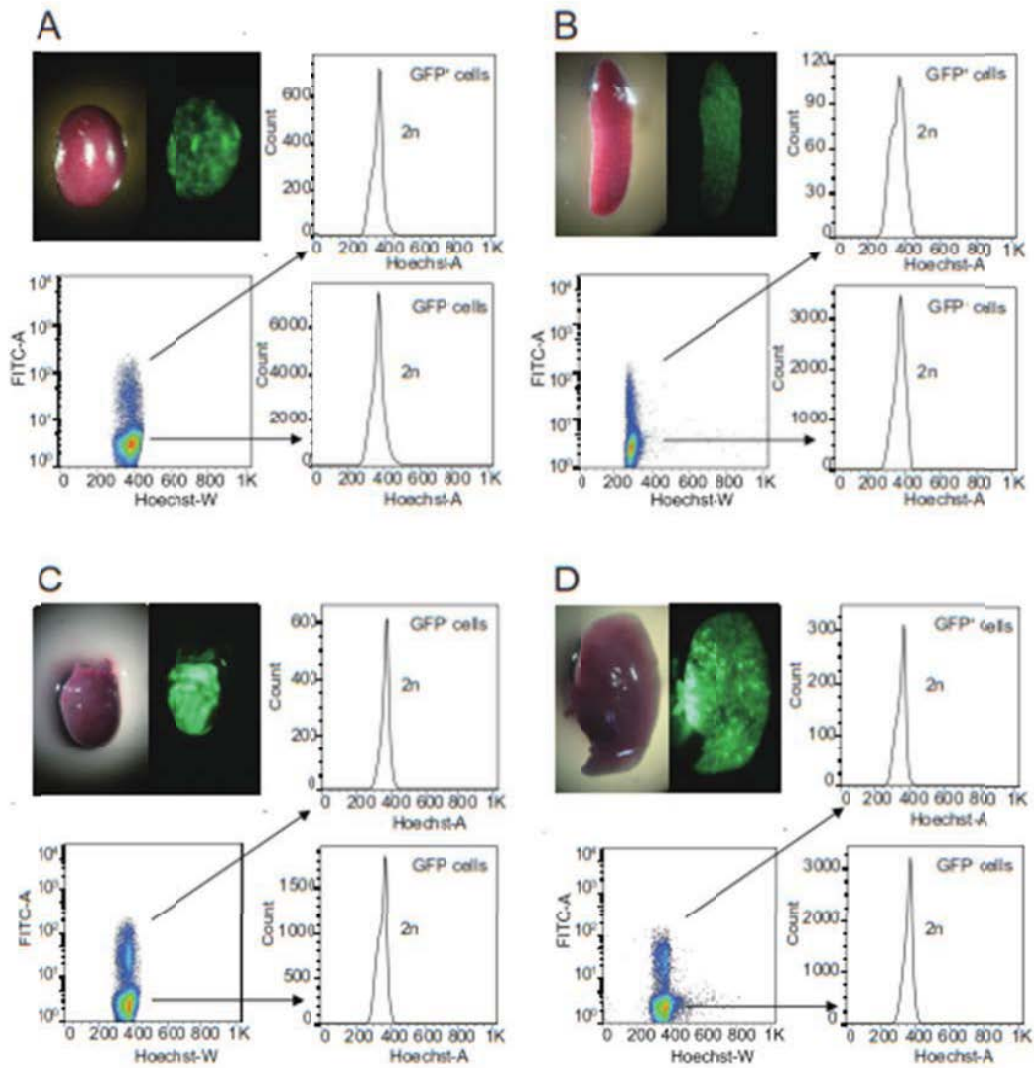


Figure S4. Flowcytometry analysis of DNA content of different tissues dissected from adult chimaeric mice. The chimaeric mice were generated by injecting phGFP-3 haploid cells into CD-1 diploid blastocysts. (A) Kidney. (B), Spleen. (C), Heart. and (D), Liver. Phase contrast and fluorescence images of these four tissues are shown. The contribution of phGFP cells is evidenced by the presence of EGFP positive cells in these organs. Flowcytometry analysis of the DNA content from both EGFP-positive and EGFP-negative cells showed completely diploid DNA content.