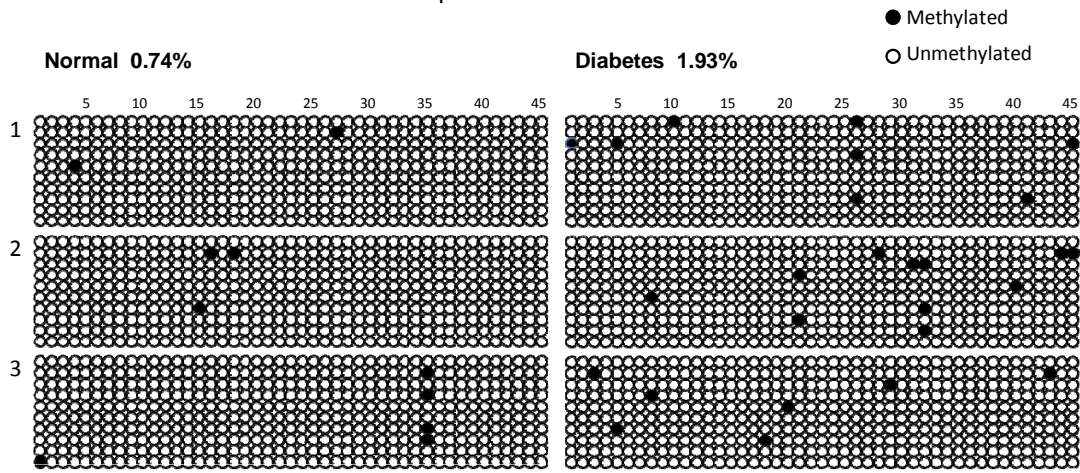
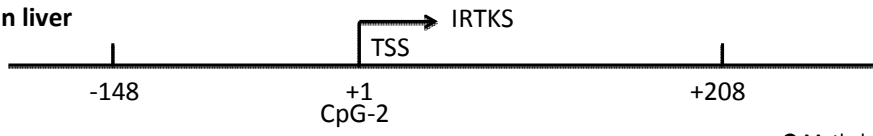


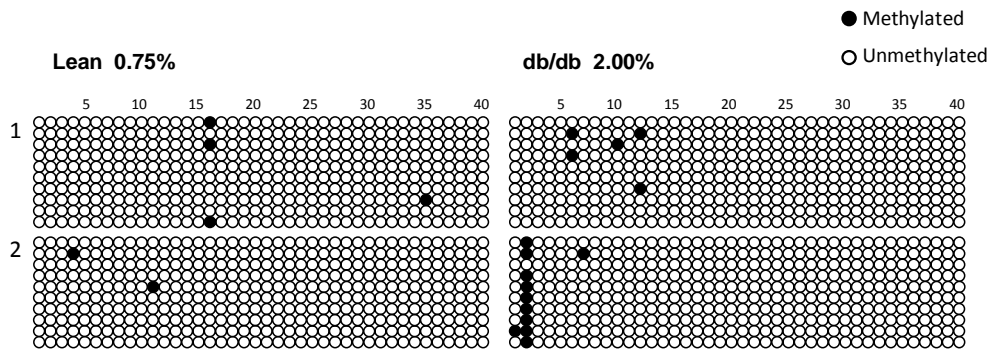
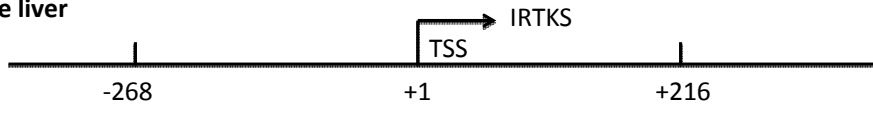


Human liver



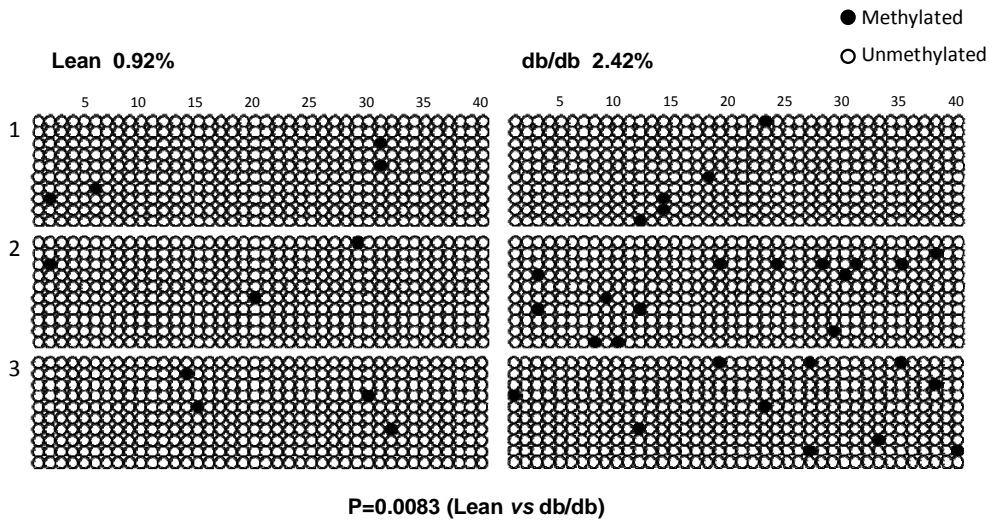
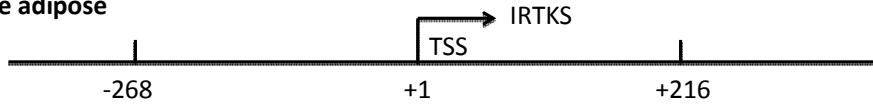
P=0.0044 (Normal vs Diabetes)

Mouse liver

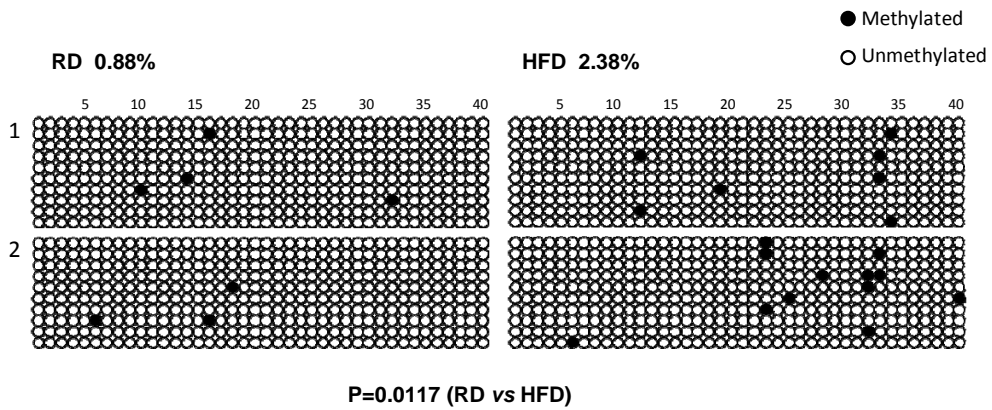
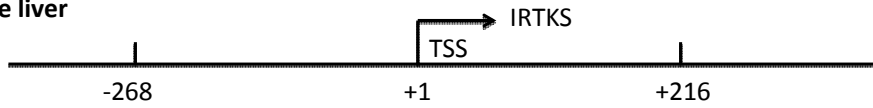


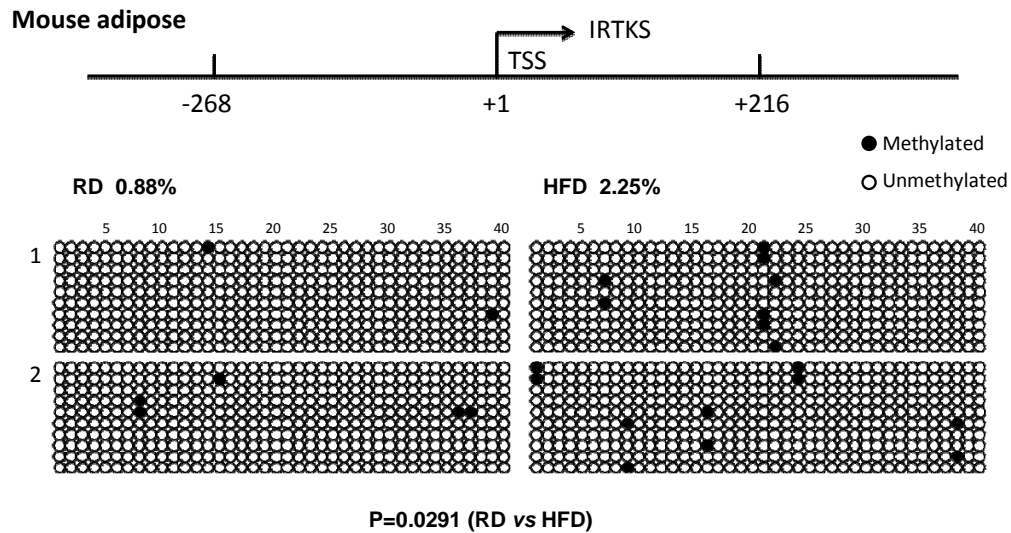
P=0.0175 (Lean vs db/db)

Mouse adipose



Mouse liver





**Supplementary Figure 8. DNA methylation analysis of IRTKS regulatory elements.** (A) Schematic diagram of two CpG islands located in regulatory elements of human and mouse IRTKS. (B) Homology analysis of the two CpG islands between human and mouse. (C) Bisulphite DNA sequencing results from the CpG island near the transcription start site (TSS) of IRTKS in liver from diabetic patients, as well as liver and adipose tissue from *db/db* mice, high-fat diet (HFD)-induced obese mice and those with regular diet (RD).