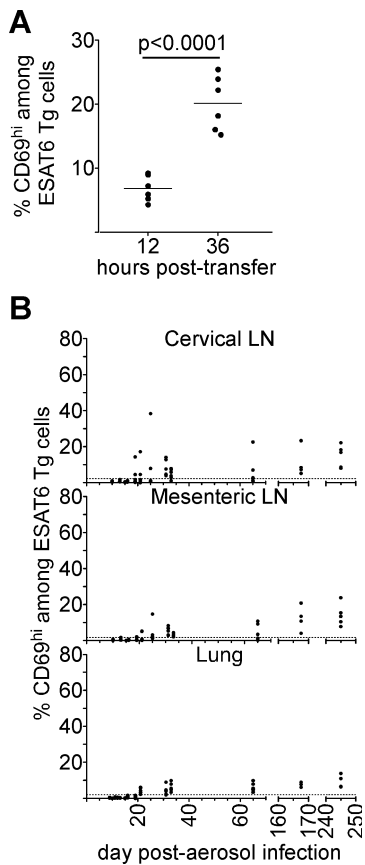


Supplementary Figure 2.



Supplementary Figure 2. Naïve T cell priming during Mtb infection. Naïve ESAT6 and SM1 transgenic T cells were isolated from mice by negative magnetic bead selection, and 1×10^6 cells were injected, at a 1:1 ratio, into infected CD45- and Thy1-congenic recipient mice. (A) Expression of CD69 on donor ESAT6 transgenic T cells was analyzed either 12 or 36 hours post-transfer in mice that had been infected 65 days prior. (B) Expression of CD69 on donor ESAT6 transgenic T cells in the cervical LN, mesenteric LN, and lung during infection. Mice were analyzed 12 hours after cell transfer, on each of the days indicated. The datum represents individual mice; the dashed line indicates the mean CD69 expression of SM1 transgenic T cells in mice analyzed throughout the experiment. The data shown was accumulated from two experiments, and is representative of three independent experiments.