

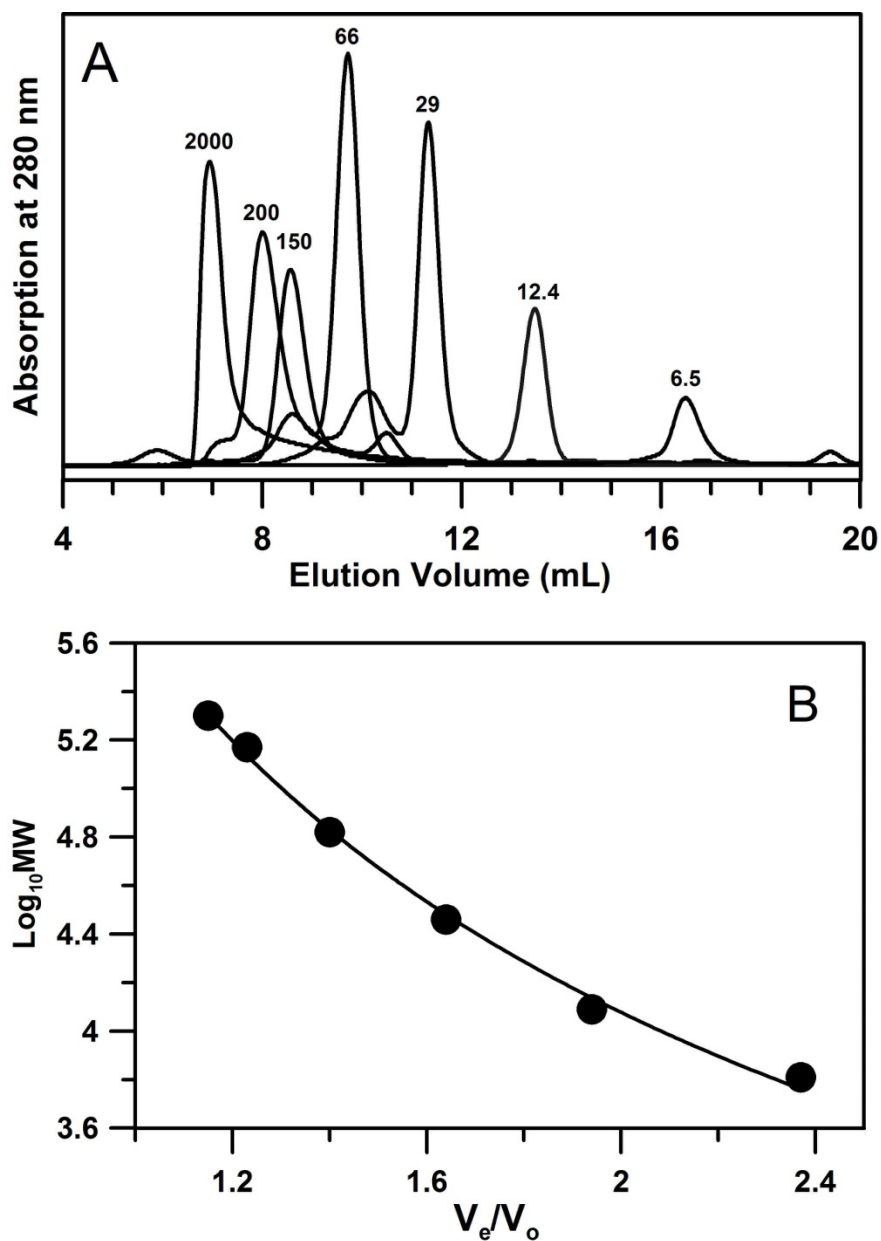
Supporting Information

***Arabidopsis thaliana* Nfu2 accommodates [2Fe-2S] or [4Fe-4S] clusters and is competent for in vitro maturation of chloroplast [2Fe-2S] and [4Fe-4S] cluster-containing proteins**

Huanyao Gao, Sowmya Subramanian, Jérémy Couturier, Sunil Naik, Sung-Kun Kim,<sup>†</sup> Thomas Leustek, David B. Knaff, Hui-Chen Wu, Florence Vignols, Boi Hanh Huynh, Nicolas Rouhier, and Michael K. Johnson

**Contents**

**Figure S1.** Calibration data for the analytical gel filtration studies.



**Figure S1.** Calibration data for analytical gel filtration studies. A. Elution profiles for the calibration standards. Numbers indicate molecular weights of the standards in kDa. B. Calibration plot of  $\log_{10}MW$  versus  $V_e/V_o$ , where  $V_e$  is the elution volume and  $V_o$  is the column void volume estimated by the elution volume of the 2000 kDa calibration standard. The solid line is the best fit to  $\log_{10}MW = A(V_e/V_o)^B$  with  $A = 5.657$  and  $B = -0.474$ .