

Figure e-5

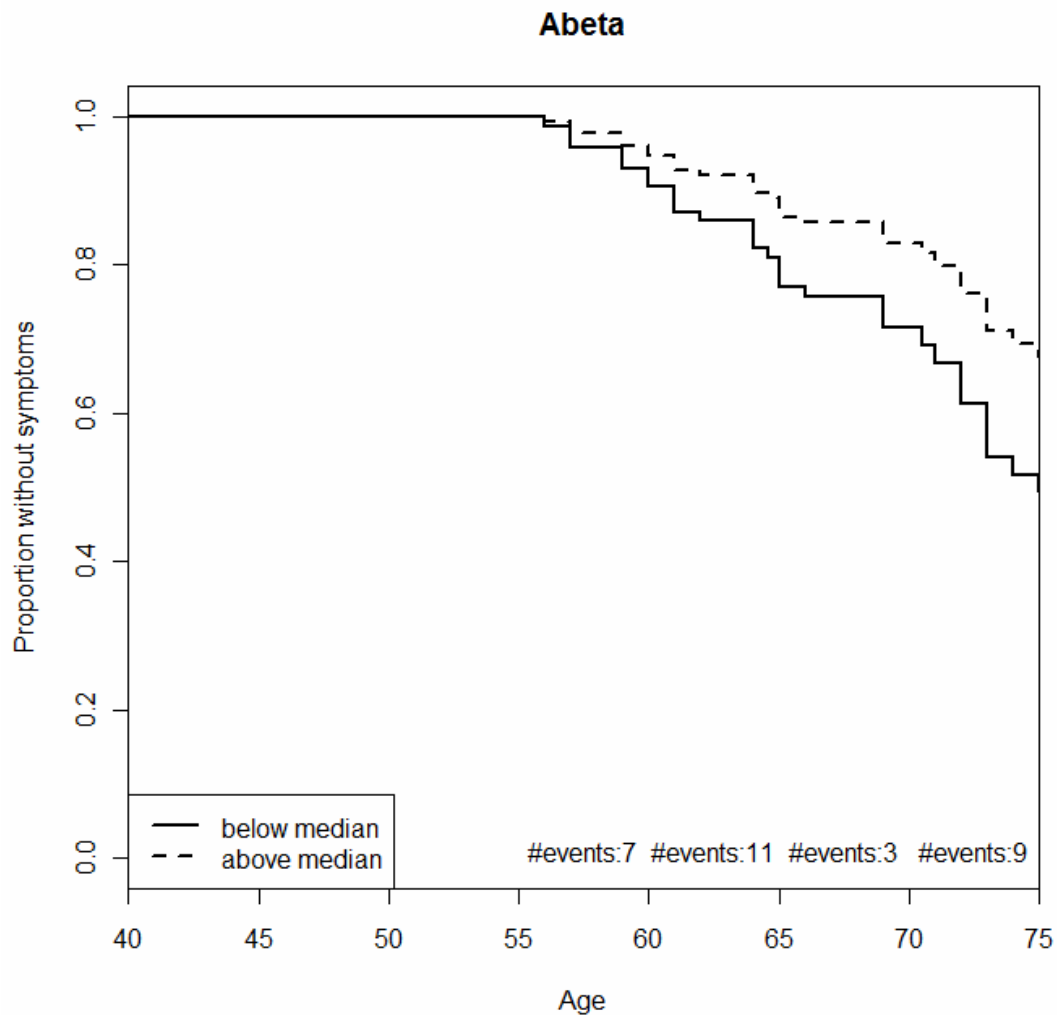


Figure e-5. The survival plot for the value of CSF beta amyloid 1-42 ($A\beta_{1-42}$), based on the Cox regression model. The solid line represents values below the median at baseline and the dashed line represents values at or above the median at baseline. The y axis represents the proportion of subjects remaining without symptoms. The plot starts at age 50 and is truncated at 75 years of age, since few cases remained unimpaired after this age, making the estimates unreliable after that age. The number of outcome events at each age interval is shown above the y axis. Note that this survival curve is not adjusted for age, education or race.