

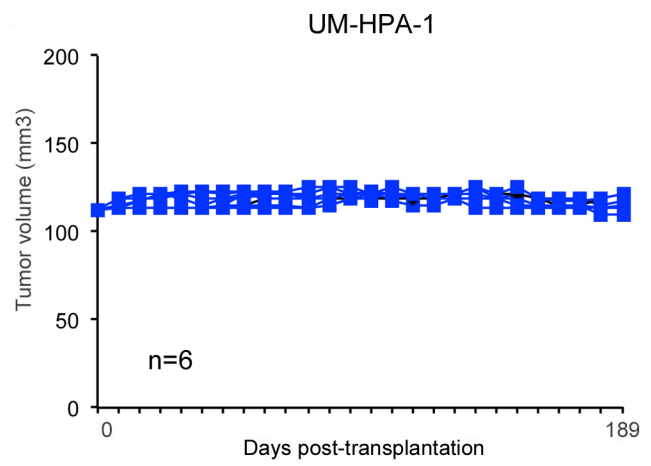
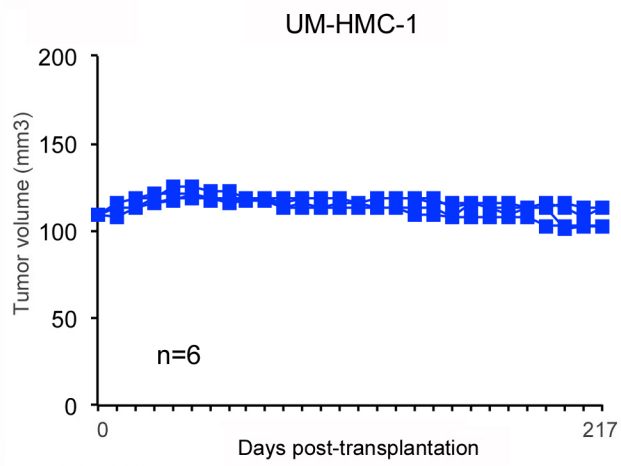
## Supplemental Information

### Figure Legends

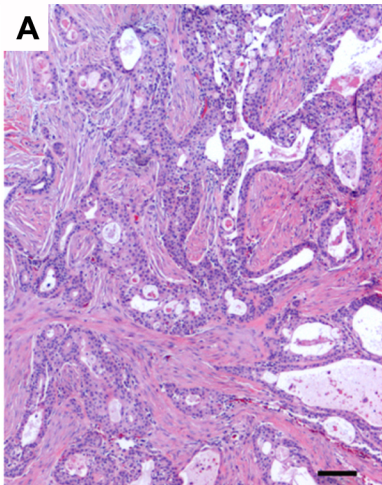
**Supplemental Figure 1.** Xenografts generated with human mucoepidermoid carcinoma cell lines. Graphs depicting growth of xenografts generated with UM-HMC-1 (n=6) or UM-HPA-1 (n=6). To generate these xenografts,  $1 \times 10^5$  tumor cells and  $9 \times 10^5$  HDMEC were seeded in biodegradable scaffolds and co-transplanted subcutaneously in the dorsal region immunodeficient mice.

**Supplemental Figure 2.** Morphological features of xenograft tumors generated with the UM-HMC-2 cell line. **(A-C)** Photomicrographs of histological sections (HE) of the human tumor specimen from which the cell line was generated (A) and 1<sup>st</sup> passage in mice at low magnification (40x) and high magnification (200x). The area chosen for the high magnification image (C) is depicted by the black square in panel B. Scale bars represent 50  $\mu\text{m}$ .

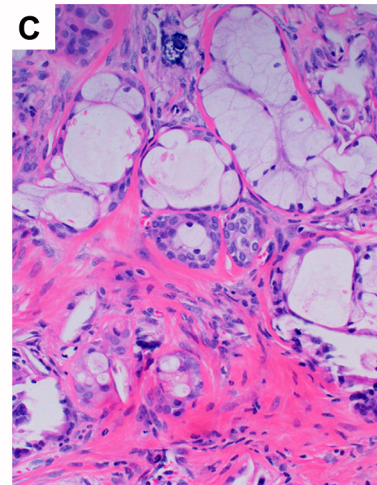
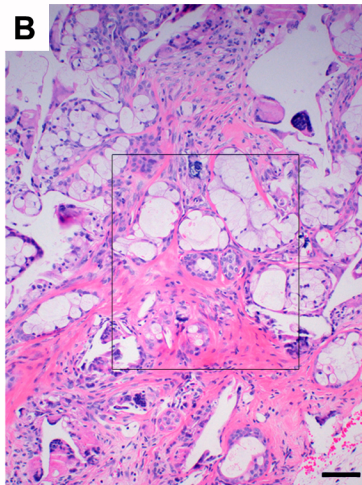
**Supplemental Figure 3.** Genotypic match of the UM-HMC cell lines and cell line-derived xenografts with the patient-derived human mucoepidermoid carcinoma specimens from which the cell lines were generated. **(A)** Table depicting the short tandem repeat (STR) profile of the human tumor specimen (*i.e.* local recurrence of a mucoepidermoid carcinoma, 4 years after the surgical removal of the primary tumor), UM-HMC-3A cell line (passage 60) and UM-HMC-3A-derived xenograft. **(B)** Table depicting the short tandem repeat (STR) profile of the human tumor specimen (*i.e.* local recurrence of a mucoepidermoid carcinoma, 4 years after the surgical removal of the primary tumor), UM-HMC-3B cell line (passage 50) and UM-HMC-3B-derived xenograft.



Patient's tumor



UM-HMC-2 (1st passage xenograft)



**A**

Genetic locus	Tumor specimen (recurrence)	Xenograft (UM-HMC-3A)	Cell line (UM-HMC-3A)
D8S1179	13,13	13,13	13,13
D21S11	29,32.2	29,32.2	29,32.2
D7S820	8,9	8,9	8,9
CSF1PO	12,12	12,12	12,12
D3S1358	14,14	14,14	14,14
TH01	8,9	8,9	8,8
D13S317	8,11	8,11	8,11
D16S539	12,13	12,13	12,13
D2S1338	16,25	16,25	16,25
D19S433	13,14	13,14	13,14
vWA	15,15	15,15	15,15
TPOX	9,12	9,12	9,12
D18S51	12,16	12,16	12,16
AMEL	X,X	X,X	X,X
D5S818	11,12	11,12	11,12
FGA	20,21	20,21	20,21

**B**

Genetic locus	Tumor specimen (metastasis)	Xenograft (UM-HMC-3B)	Cell line (UM-HMC-3B)
D8S1179	13,13	13,13	13,13
D21S11	29,32.2	29,32.2	29,32.2
D7S820	8,9	8,9	8,9
CSF1PO	12,12	12,12	12,12
D3S1358	14,14	14,14	14,14
TH01	8,9	8,9	8,9
D13S317	8,11	8,11	11,11
D16S539	12,13	12,13	12,13
D2S1338	16,25	16,25	16,25
D19S433	13,14	13,14	13,14
vWA	15,15	15,15	15,15
TPOX	9,12	9,12	9,12
D18S51	12,16	12,16	12,16
AMEL	X,X	X,X	X,X
D5S818	11,12	11,12	11,12
FGA	20,21	20,21	20,21