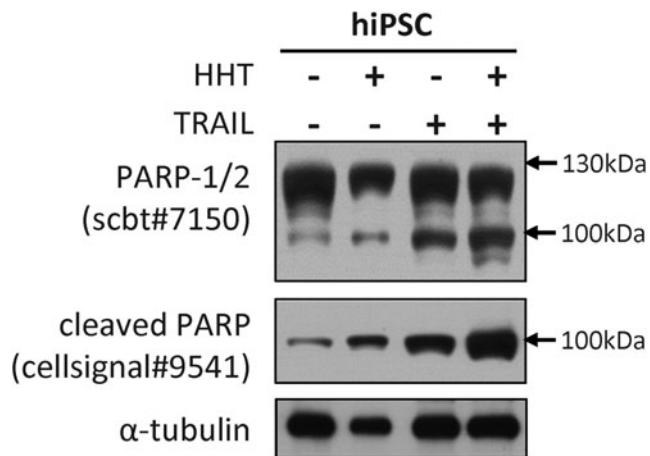


Supplementary Data



SUPPLEMENTARY FIG. S1. Specificity of cleaved PARP antibody. Human-induced pluripotent stem cells (hiPSC) were left untreated (control), treated with 50 nM HHT or 200 ng/mL human recombinant TRAIL, or pretreated with 50 nM HHT for 1 h followed by 200 ng/mL human recombinant TRAIL treatment (HHT + TRAIL). Shown is a western blot analysis of a cleaved fragment of PARP (#9541, Cell Signaling Technologies) and both whole and cleaved forms of PARP (sc-7150, Santa Cruz Biotechnologies). Patterns of cleaved fragments (~90 kDa) are similar in both, demonstrating the specificity of the cleaved PARP antibody. Alpha tubulin was used as a loading control.