

For submission to Scientific Reports-**Supplementary Information**

# **Involvement of Mincle and Syk in the changes to innate immunity after ischemic stroke**

Yukiya Suzuki<sup>1,2</sup>, Yusuke Nakano<sup>1</sup>, Keisuke Mishiro<sup>1</sup>, Toshinori Takagi<sup>1,3</sup>, Kazuhiro Tsuruma<sup>1</sup>,

Mitsuhiro Nakamura<sup>2</sup>, Shinichi Yoshimura<sup>3</sup>, Masamitsu Shimazawa<sup>1</sup> & Hideaki Hara<sup>1</sup>

<sup>1</sup>Molecular Pharmacology, Department of Biofunctional Evaluation, Gifu Pharmaceutical University, Gifu 501-1196, Japan.

<sup>2</sup>Laboratory of Drug Informatics, Gifu Pharmaceutical University, Gifu, 501-1196, Japan.

<sup>3</sup>Department of Neurosurgery, Gifu University Graduate School of Medicine, Gifu 501-1194, Japan.

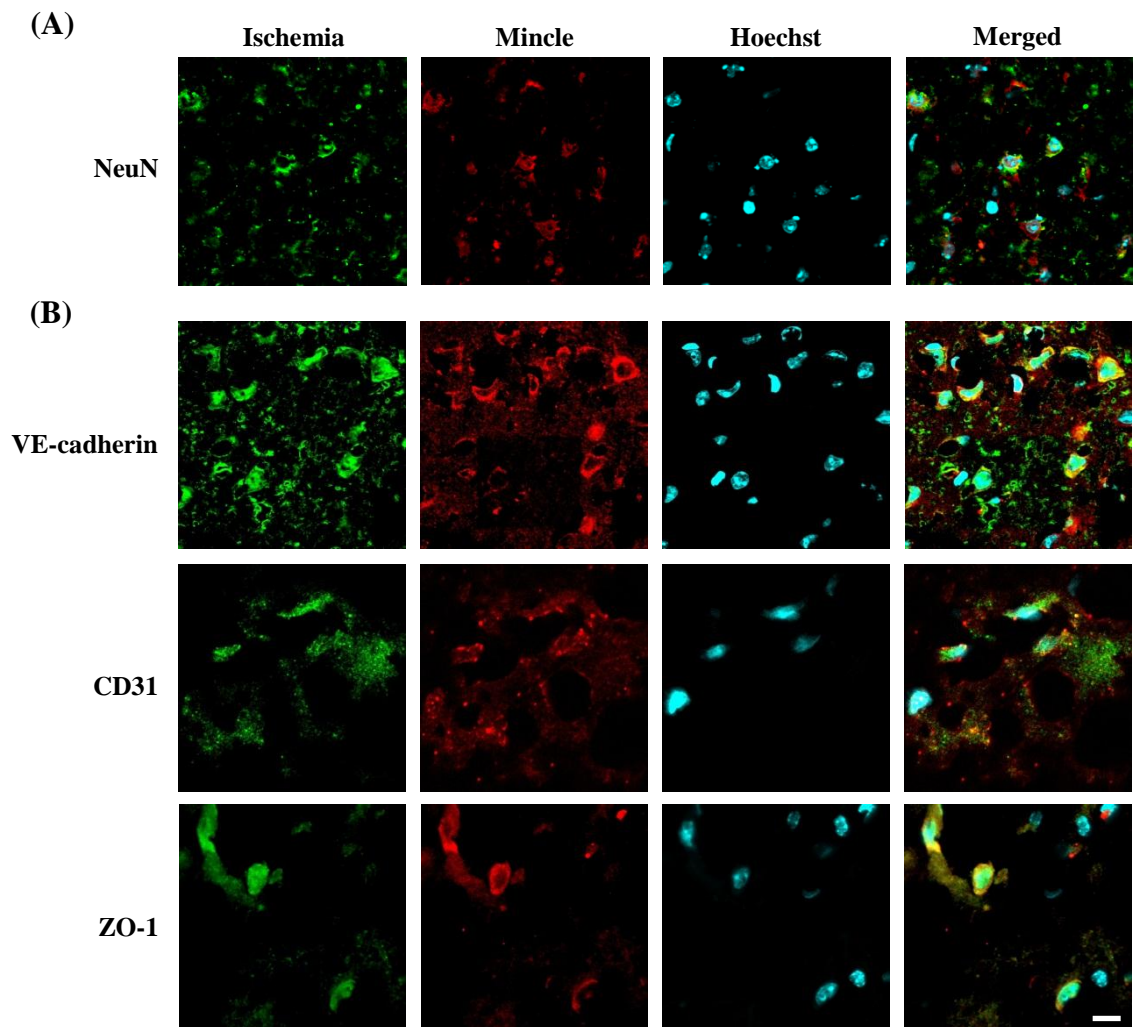
\*Correspondence: Prof. H. Hara, Ph.D., Molecular Pharmacology, Department of Biofunctional

Evaluation, Gifu Pharmaceutical University, 1-25-4 Daigaku-nishi, Gifu 501-1196, Japan. Tel and

Fax: +81-58-230-8126, e-mail: [hidehara@gifu-pu.ac.jp](mailto:hidehara@gifu-pu.ac.jp)

The authors have no personal financial or institutional interest in any of the drugs, materials, or devices described in this study.

## Supplementary Figure S1



**Supplementary Figure S1.** Localization of Mincle with neuronal or endothelial cells in brain tissue after ischemic stroke in mice. (A) Mincle was co-localized with NeuN which is a neuronal marker. (B) Mincle was co-localized with VE-cadherin, CD31 and ZO-1, which are endothelial markers. Scale bar = 10  $\mu$ m.

## Supplementary Images

Figure 2 A

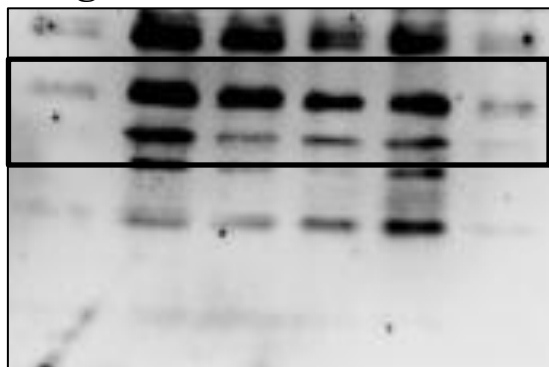


Figure 2 B

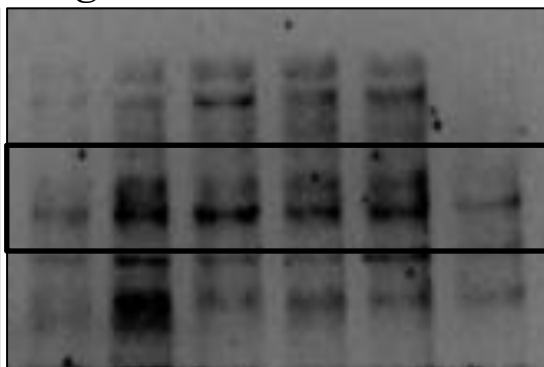


Figure 2 C

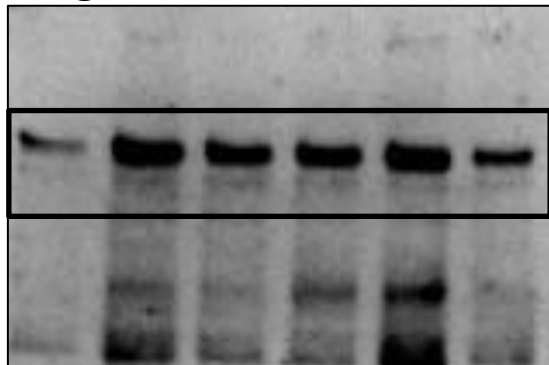


Figure 2 D

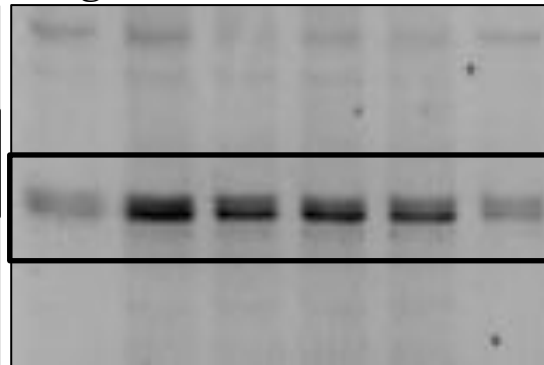


Figure 4 A

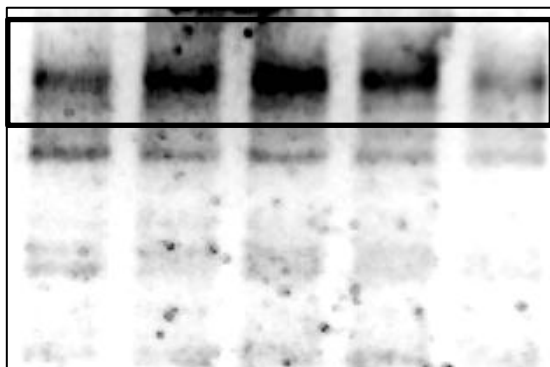


Figure 4 B

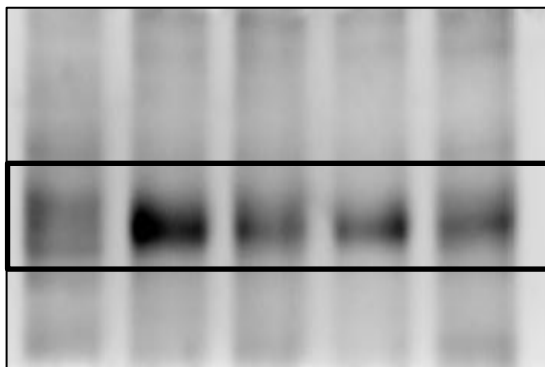


Figure 4 C

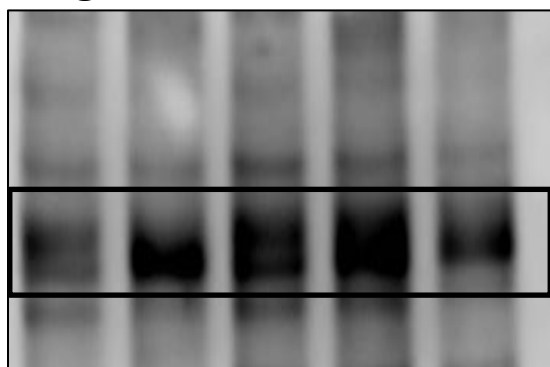


Figure 4 D

