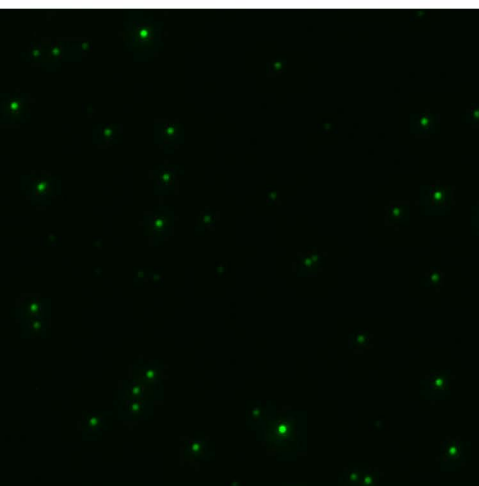


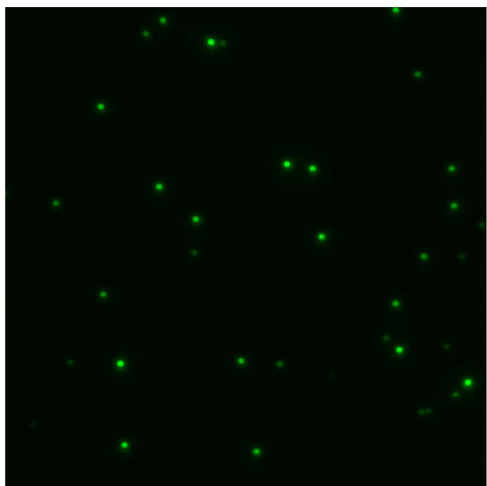
Supplementary figure 1. Influence of mica surface on fluorescence intensity. A) Optical image of green fluorospheres deposited on glass or on mica glued glass. Samples were prepared in parallel as described. Acquisition parameters of the EMCCD camera were identical (500ms exposure time, maximum gain) for both cases. The presence of mica, right panel, did not produce observable birefringence or reduction in fluorescence intensity. B) Bar graph showing the integrated intensity (a.u.) of the individual fluorospheres imaged in A) deposited on glass (blue) or on mica glued glass (maroon). C) Histogram showing the frequency of fluorospheres with the indicated intensities (a.u.) on glass and mica glued glass (blue and maroon, respectively).

A

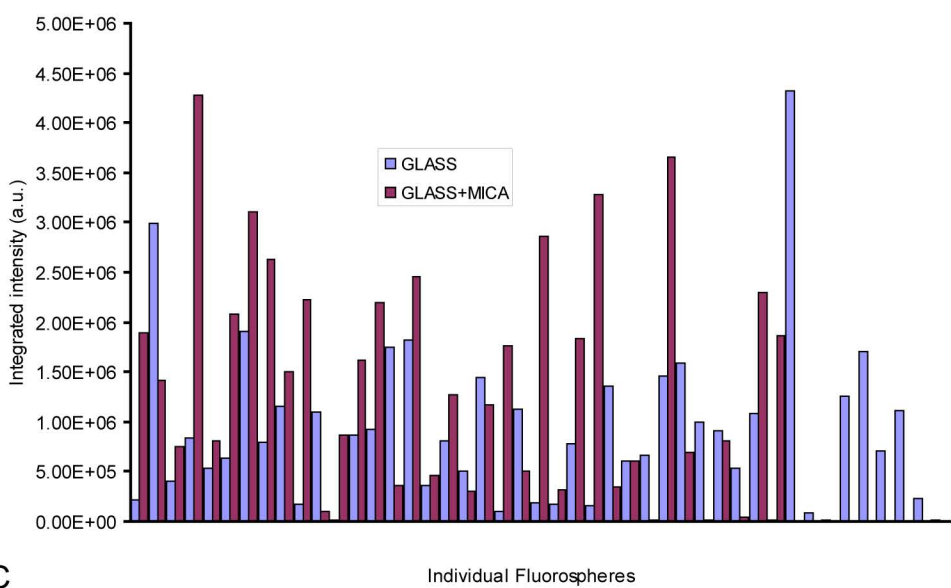
GLASS



GLASS+MICA



B



C

