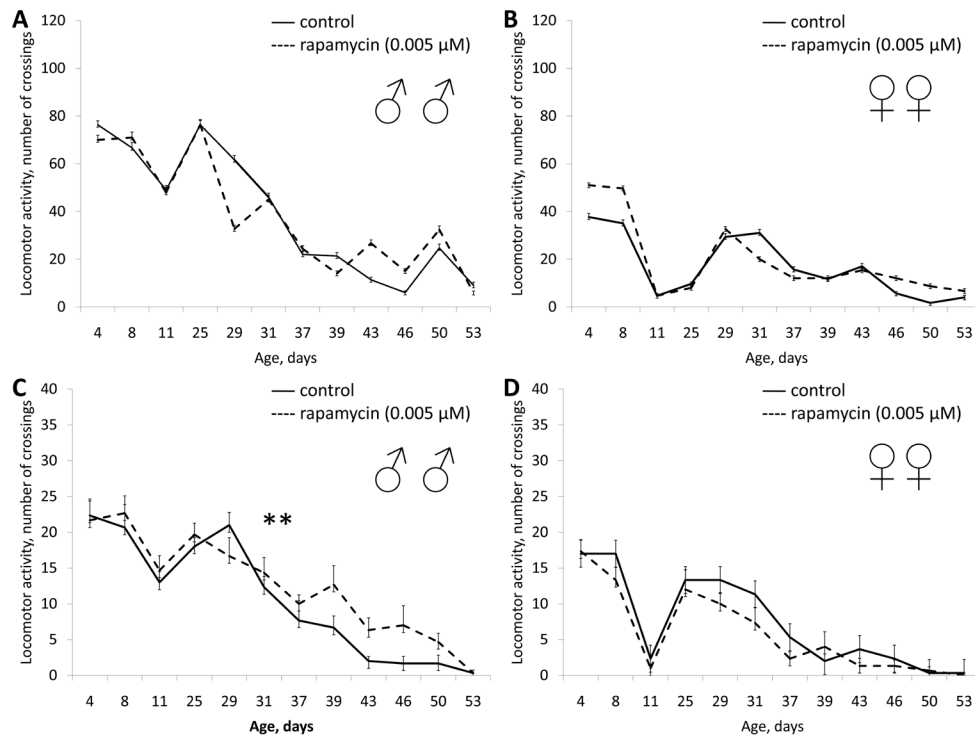
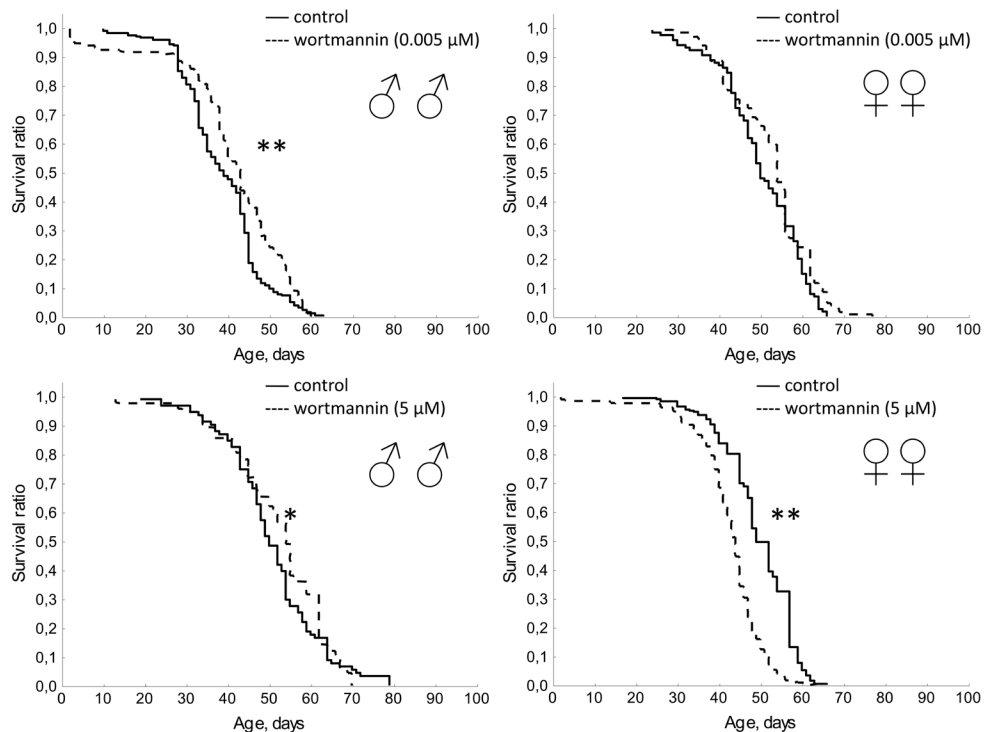


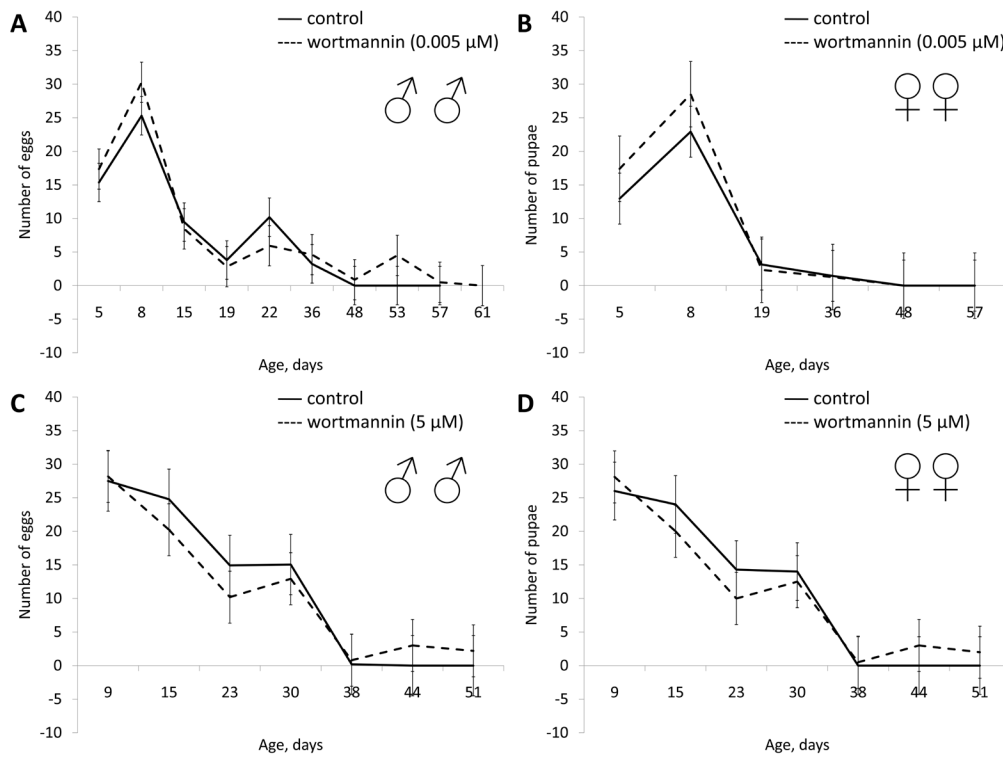
## Selective anticancer agents suppress aging in *Drosophila* - Danilov et al



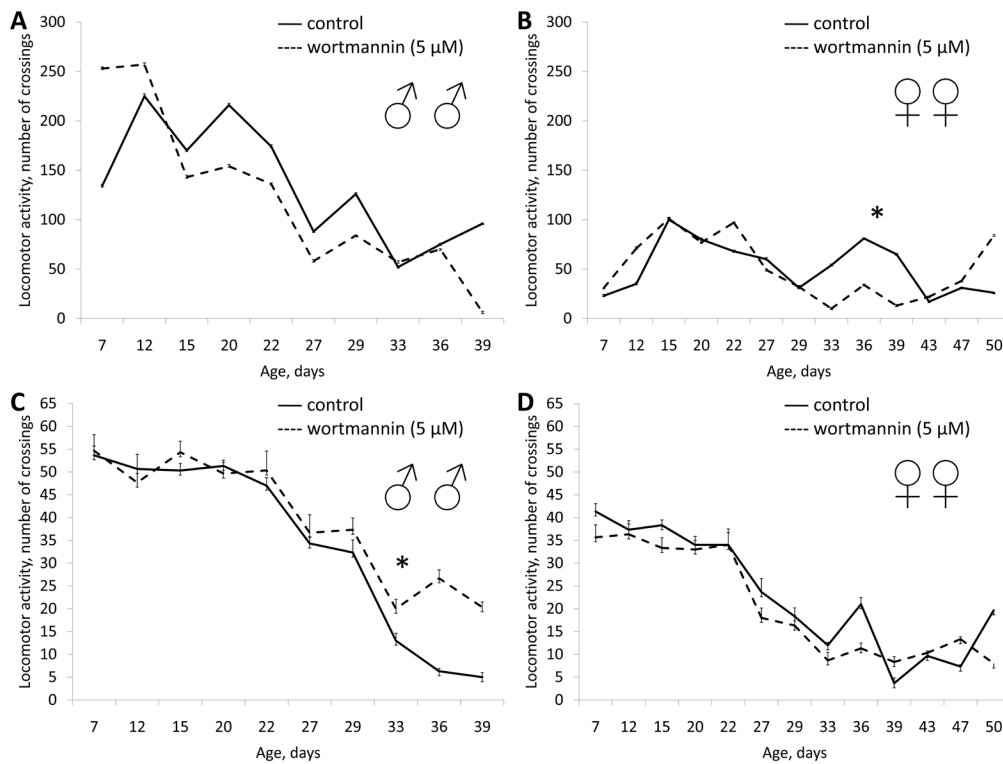
**Figure S1: Effect of rapamycin (0.005 μM) on locomotor activity *Drosophila melanogaster*.** (A, B) spontaneous activity. (C, D) negative geotaxis test. \* p<0.001, \*\* p<0.05 ( $\chi^2$  test).



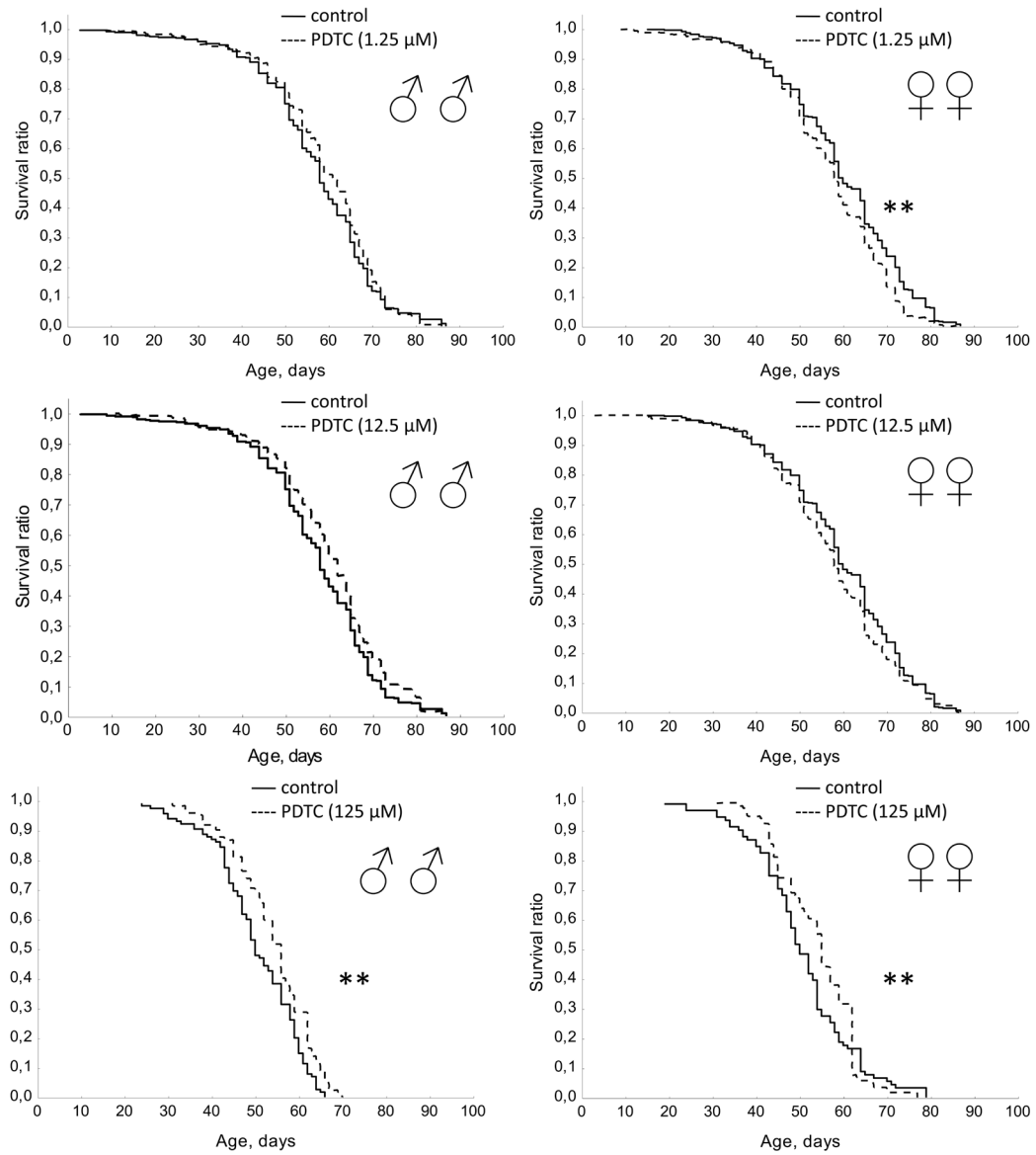
**Figure S2: Effect of wortmannin (0.005 and 5 μM) on lifespan *Drosophila melanogaster*.** \* p<0.001, \*\* p<0.05 (Kolmogorov-Smirnov test).



**Figure S3: Effect of wortmannin (0.005 and 5  $\mu$ M) on fertility of females *Drosophila melanogaster*. \*  $p < 0.001$ , \*\*  $p < 0.05$  ( $\chi^2$  test).**



**Figure S4: Effect of wortmannin (5  $\mu$ M) on locomotor activity *Drosophila melanogaster*. (A, B) spontaneous activity. (C, D) negative geotaxis test. \*  $p < 0.001$ , \*\*  $p < 0.05$  ( $\chi^2$  test).**



**Figure S5: Effect of PDTC (1.25, 12.5, 125 μM) on lifespan *Drosophila melanogaster*.** \*  $p < 0.001$ , \*\*  $p < 0.05$  (Kolmogorov-Smirnov test).

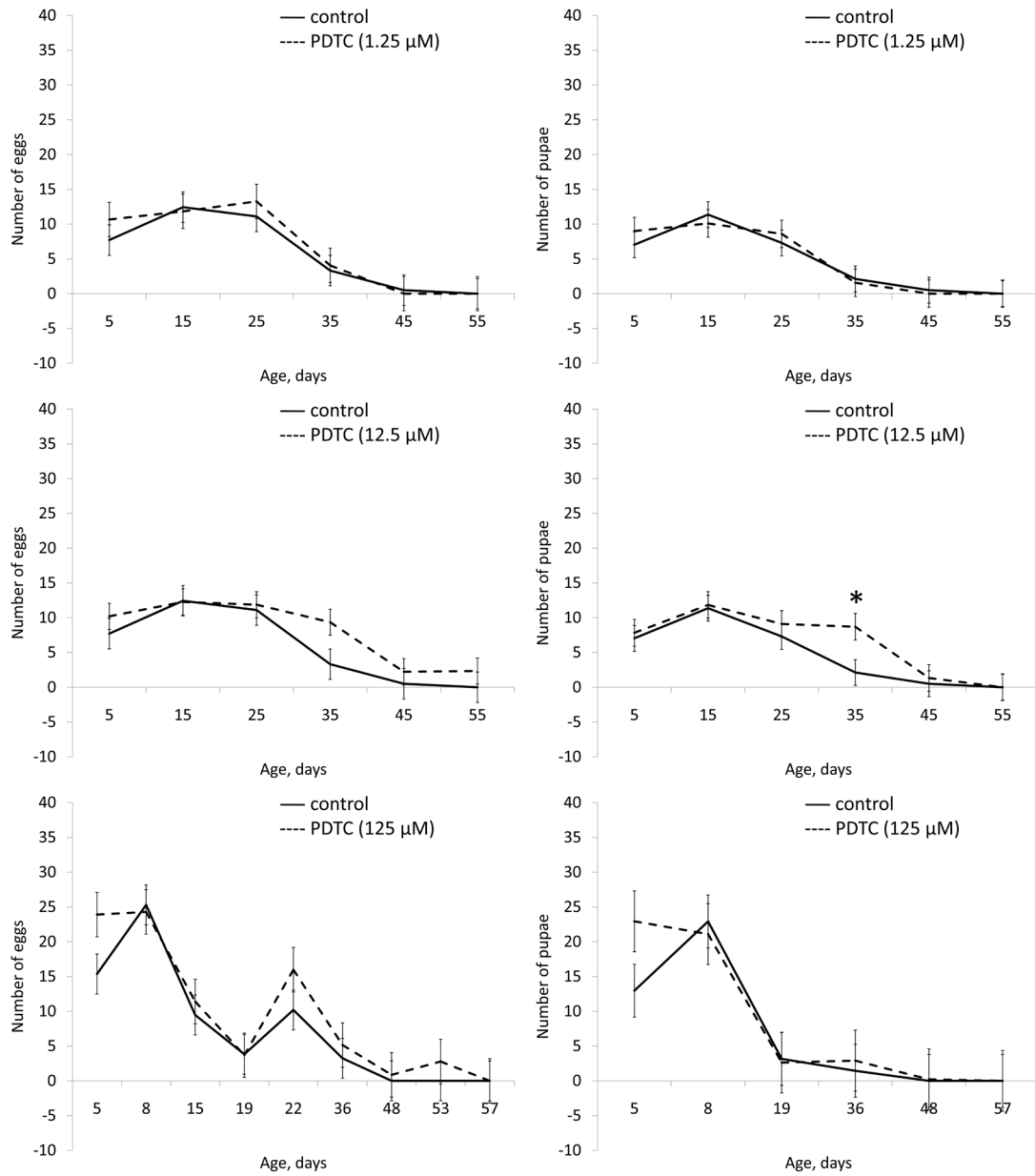
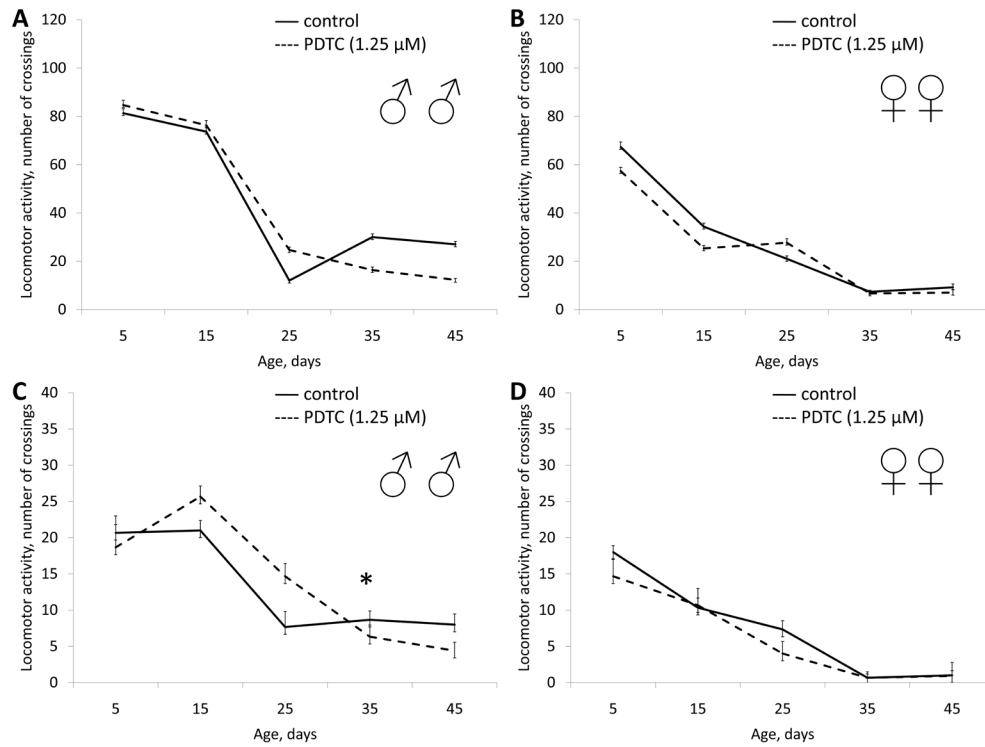
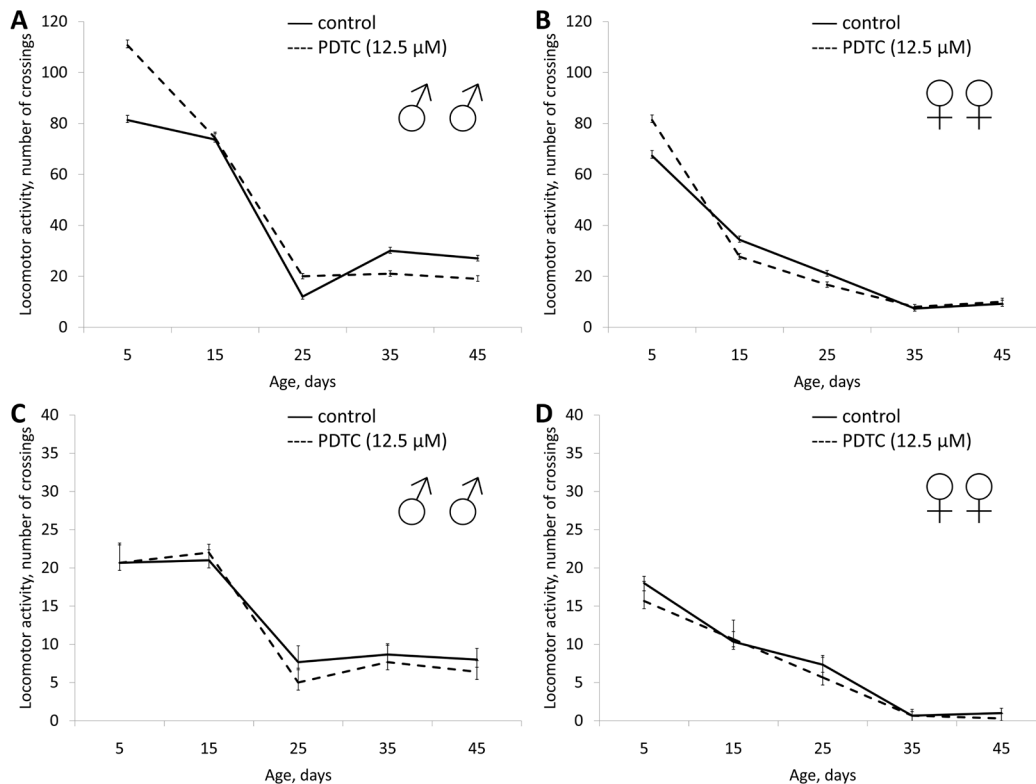


Figure S6: Effect of PDTC (1.25, 12.5, 125 μM) on fertility of females *Drosophila melanogaster*. \* p < 0.001, \*\* p < 0.05 ( $\chi^2$  test).



**Figure S7: Effect of PDTC (1.25 μM) on locomotor activity *Drosophila melanogaster*.** (A, B) spontaneous activity. (C, D) negative geotaxis test. \*  $p < 0.001$ , \*\*  $p < 0.05$  ( $\chi^2$  test).



**Figure S8: Effect of PDTC (12.5 μM) on locomotor activity *Drosophila melanogaster*.** (A, B) spontaneous activity. (C, D) negative geotaxis test. \*  $p < 0.001$ , \*\*  $p < 0.05$  ( $\chi^2$  test).

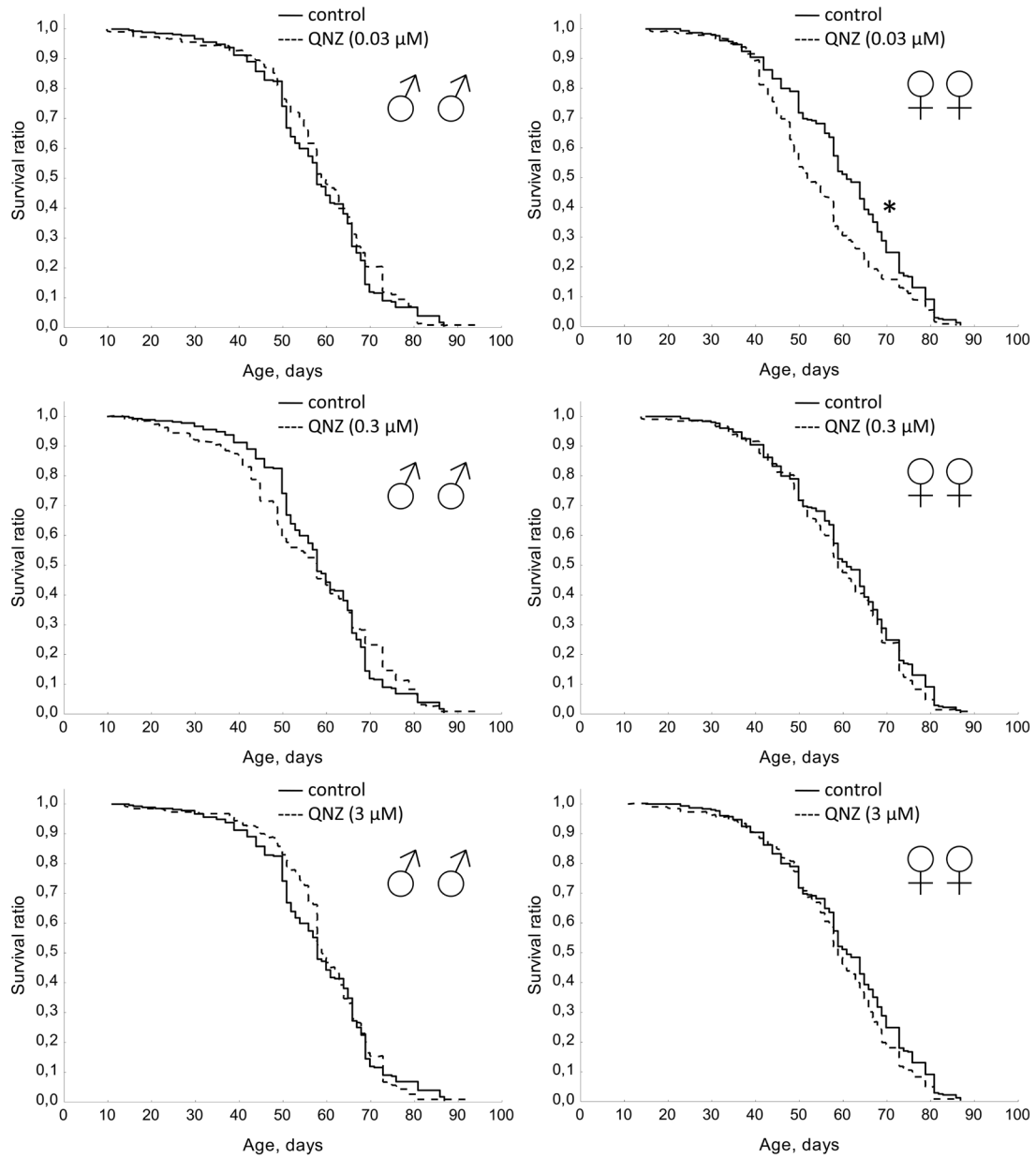
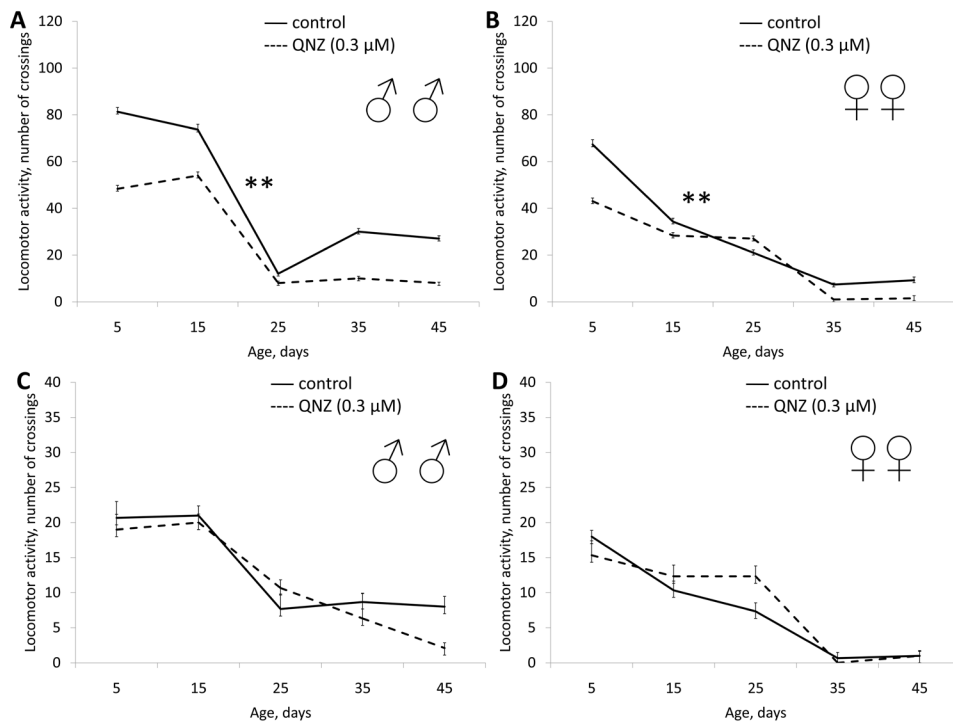
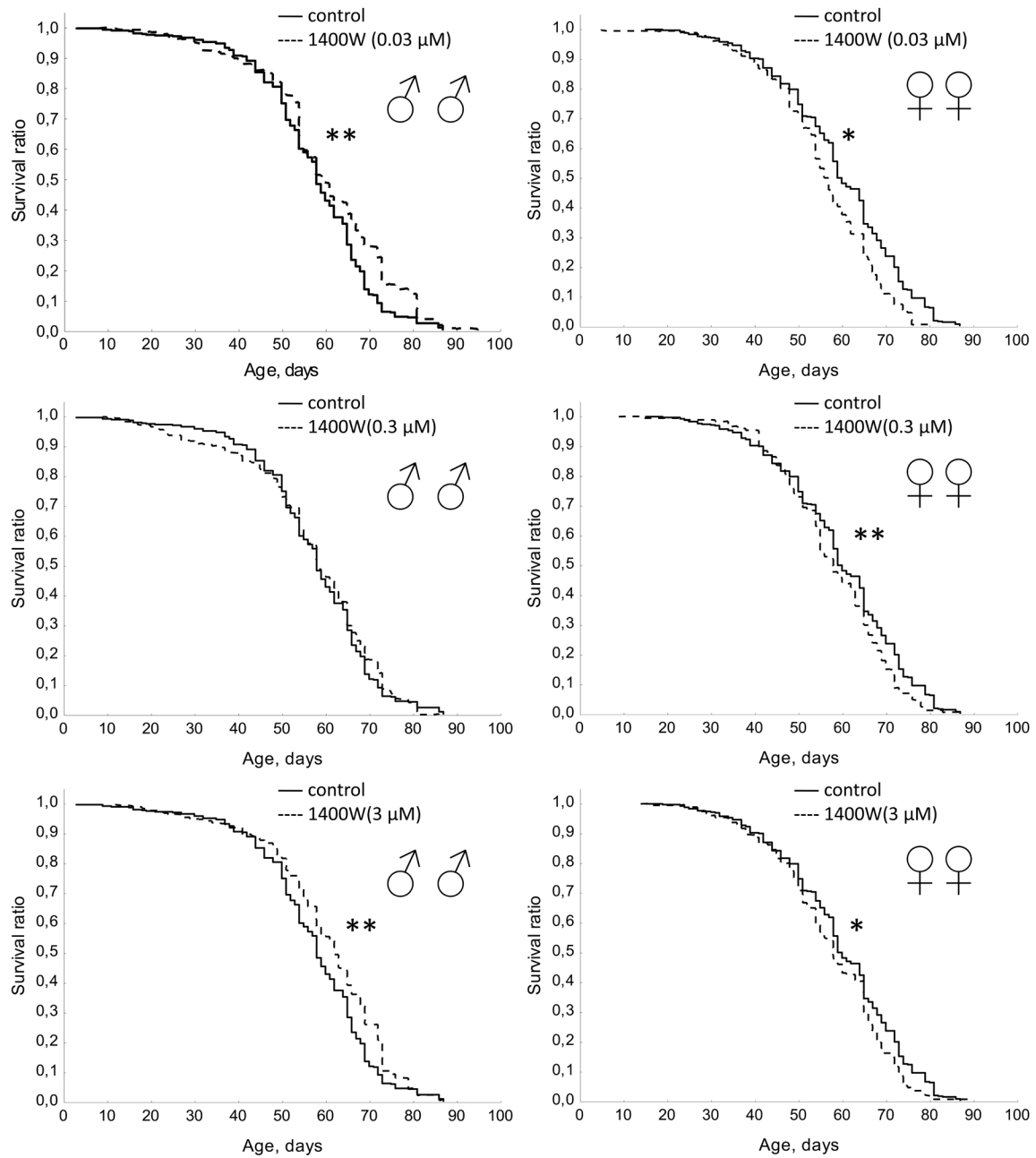


Figure S9: Effect of QNZ (0.03, 0.3, 3  $\mu\text{M}$ ) on lifespan *Drosophila melanogaster*. \*  $p < 0.001$ , \*\*  $p < 0.05$  (Kolmogorov-Smirnov test).

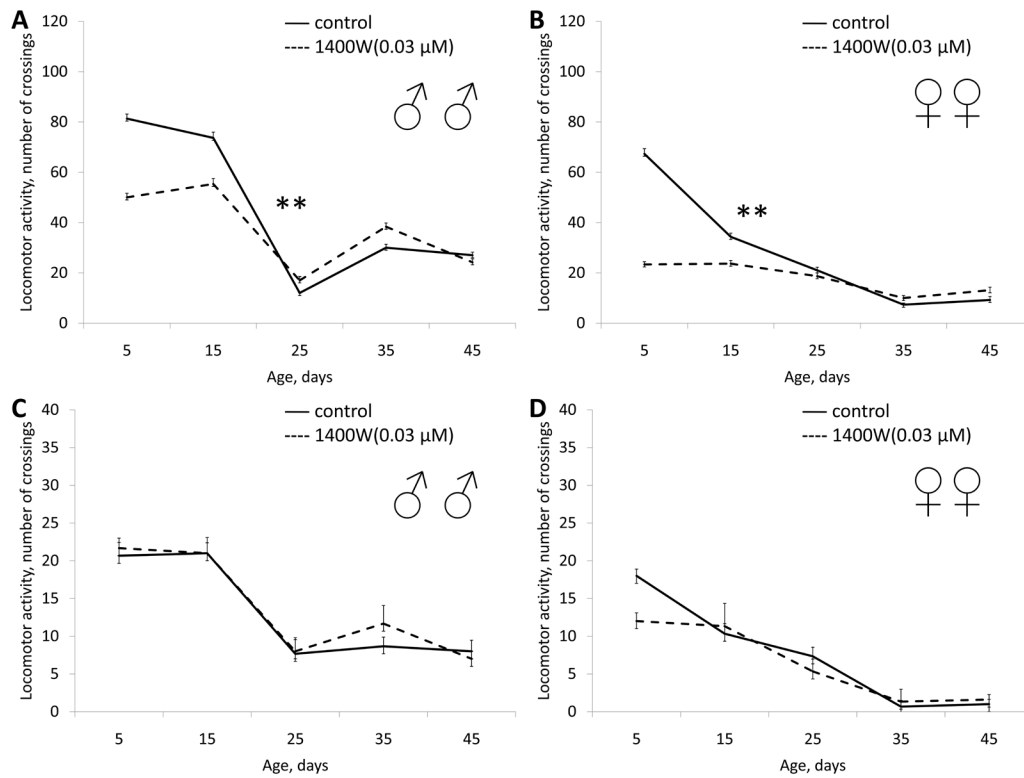


**Figure S10: Effect of QNZ (0.3 μM) on locomotor activity *Drosophila melanogaster*.** (A, B) spontaneous activity. (C, D) negative geotaxis test. \*  $p < 0.001$ , \*\*  $p < 0.05$  ( $\chi^2$  test).

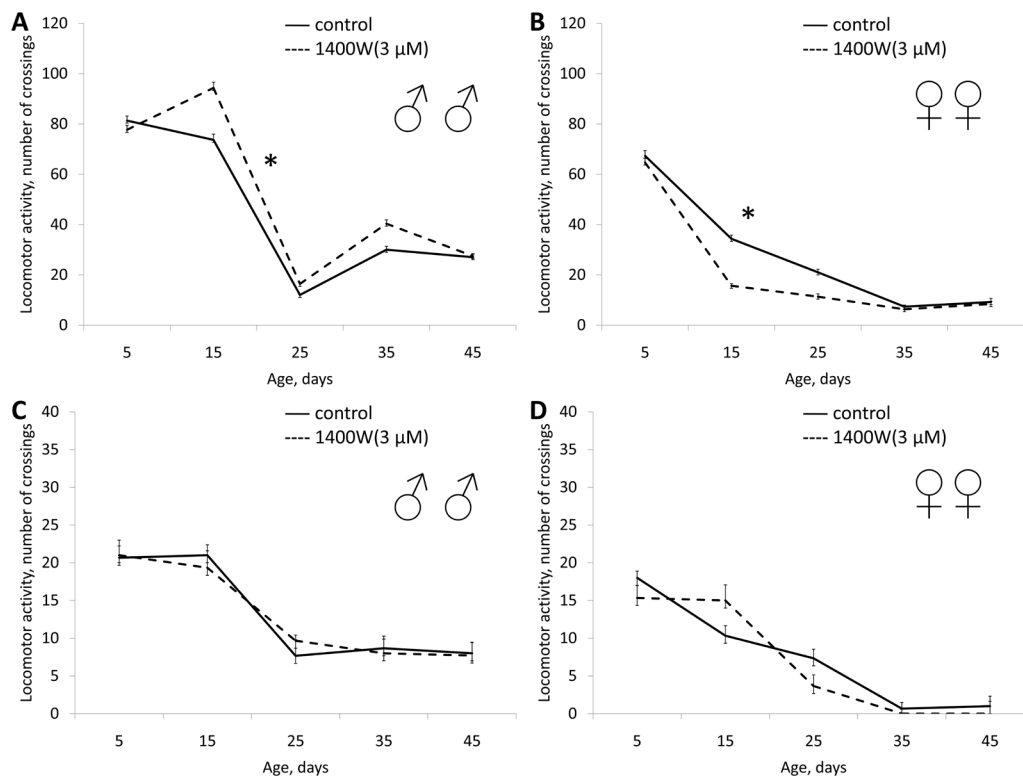


**Figure S11: Effect of 1400W (0.03, 0.3, 3 μM) on lifespan *Drosophila melanogaster*.** \*  $p < 0.001$ , \*\*  $p < 0.05$  (Kolmogorov-Smirnov test).

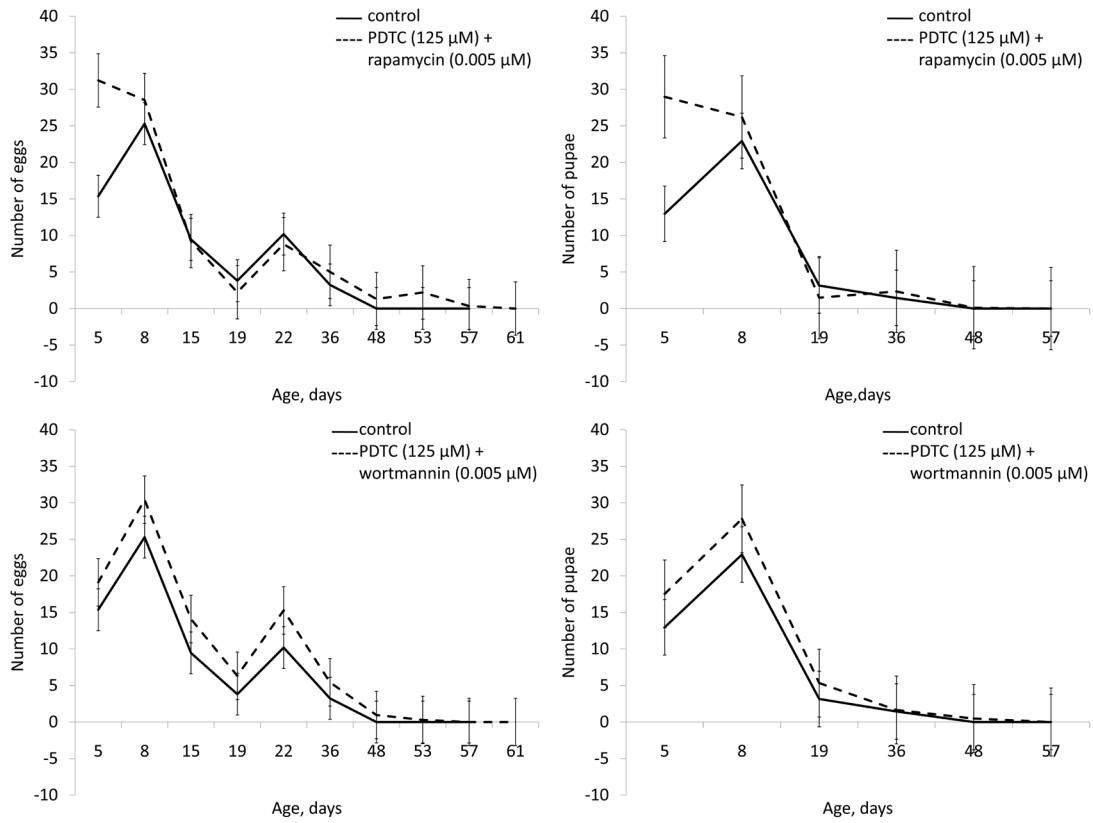




**Figure S12: Effect of 1400W (0.03 μM) on locomotor activity *Drosophila melanogaster*.** (A, B) spontaneous activity. (C, D) negative geotaxis test. \*  $p < 0.001$ , \*\*  $p < 0.05$  ( $\chi^2$  test).



**Figure S13: Effect of 1400W (3 μM) on locomotor activity *Drosophila melanogaster*.** (A, B) spontaneous activity. (C, D) negative geotaxis test. \*  $p < 0.001$ , \*\*  $p < 0.05$  ( $\chi^2$  test).



**Figure S14: Effect of combined use of PDTC (125 μM) and rapamycin (0.005 μM), mix PDTC (125 μM) and wortmannin (0.005 μM) on fertility of females *Drosophila melanogaster*. \* p< 0.001, \*\* p< 0.05 ( $\chi^2$  test).**