

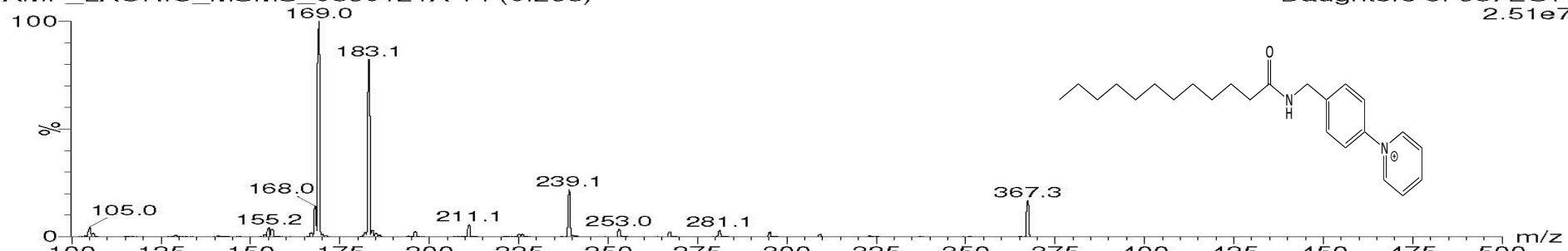
Supplemental Material

Supplementa Table 1: Autosampler (Waters Acquity UPLC) and ESI-MS/MS (Waters Xevo TQ) data collection parameters for underivatized and AMPP amide eicosanoids.

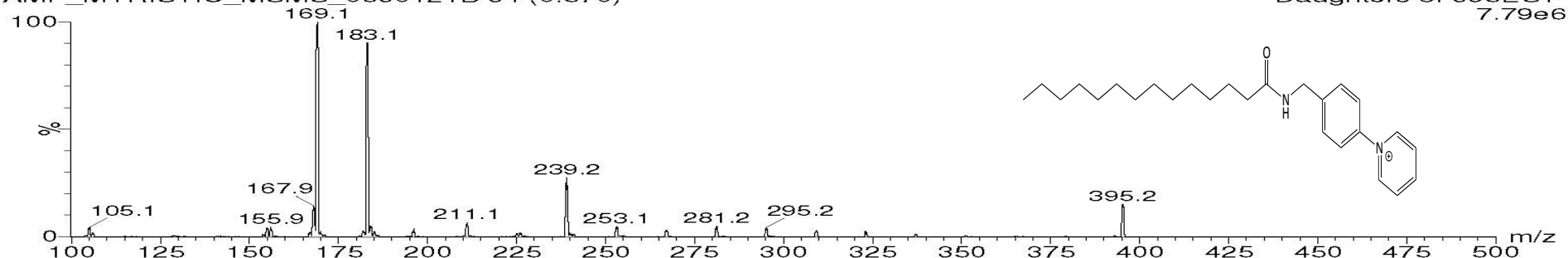
Injection type	Sequential
Load ahead	Disabled
Pre-aspirate air gap	Automatic
Pre-aspirate air gap	Automatic
Weak Wash Solvent	0.1% Formic Acid/5% acetonitrile in H ₂ O
Weak wash volume	1000 µL
Strong wash solvent	0.1 % Formic acid in acetonitrile
Stron wash volume	1000 µL
Positive Mode	
Capillary Voltage (kV)	(+) 0.5
Extractor (V)	3
Aperture	0.1
Gain	1
Dwell Time (msec)	50
Inter-Scan Delay (msec)	10
Inter-Channel Delay (msec)	100
Source Temp (°C)	150
Desolvation Temp (°C)	600
Desolvation Gas (L/Hr)	1000
Cone Gas (L/Hr)	25
Collision Gas Flow (mL/min)	0.15
Collision Cell Entrance (V)	0.5
Collision Cell Exit (V)	0.5

Supplementary figure legend. Shown are m/z scans for product ions derived from each FA AMPP amide. The precursor m/z values are indicated on each spectra. Different amounts of FA AMPP amides were injected thus leading to different ion intensities. The variation in ion intensities per mole of FA AMPP amide is less than 3-fold across all the species shown. Note that accurate absolute quantification of any specific FA species would require a chemically identical, heavy isotope-substitute internal standard.

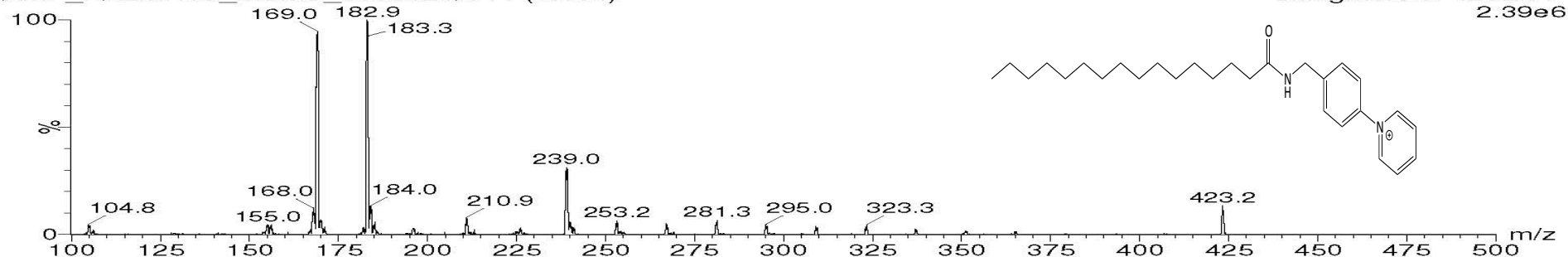
AMP_LAURIC_MSMS_0630121A 14 (0.235)



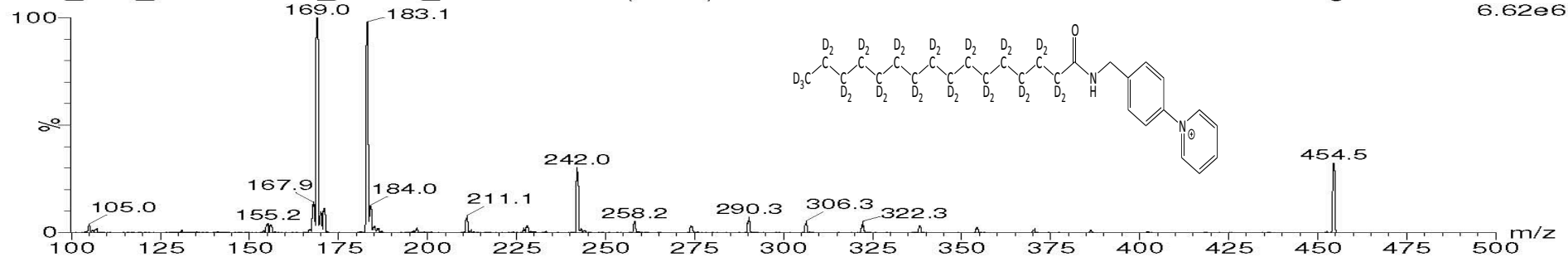
AMP_MYRISTIC_MSMS_0630121B 34 (0.570)



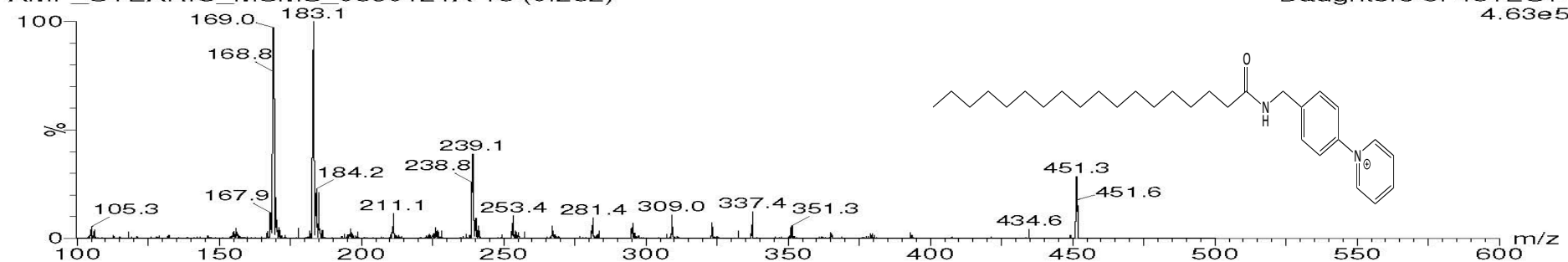
AMP_PALMITIC_MSMS_0630121A 11 (0.184)



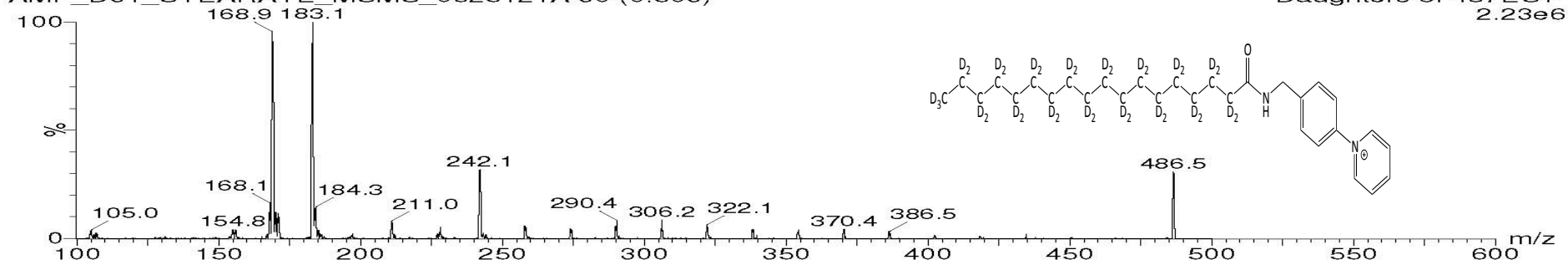
AMP_D31_PALMITATE_MSMS_0625121A 15 (0.252)



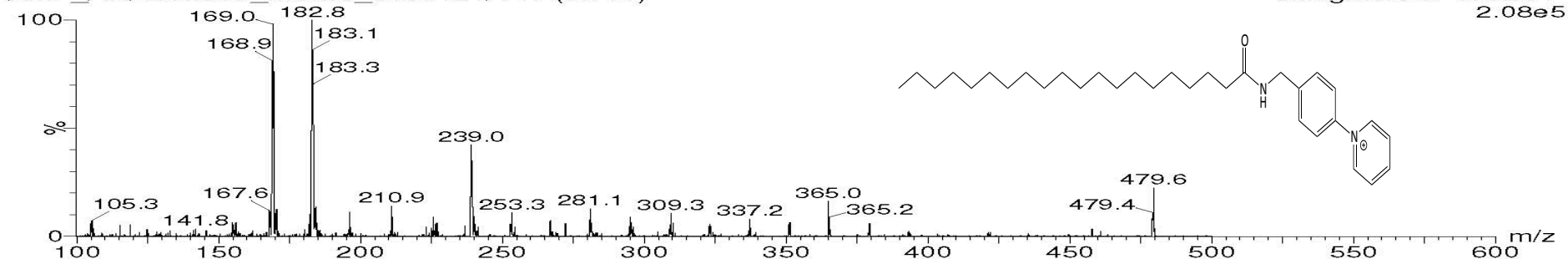
AMP_STEARIC_MSMS_0630121A 15 (0.252)



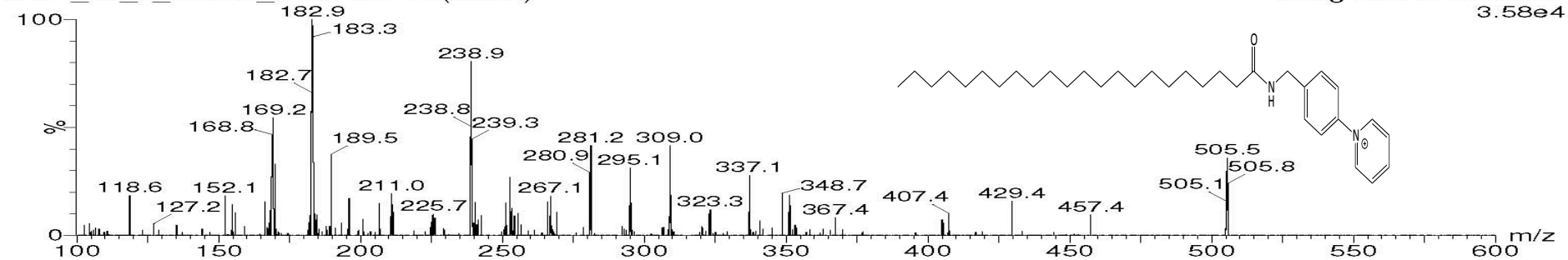
AMP_D31_STEARATE_MSMS_0625121A 30 (0.503)



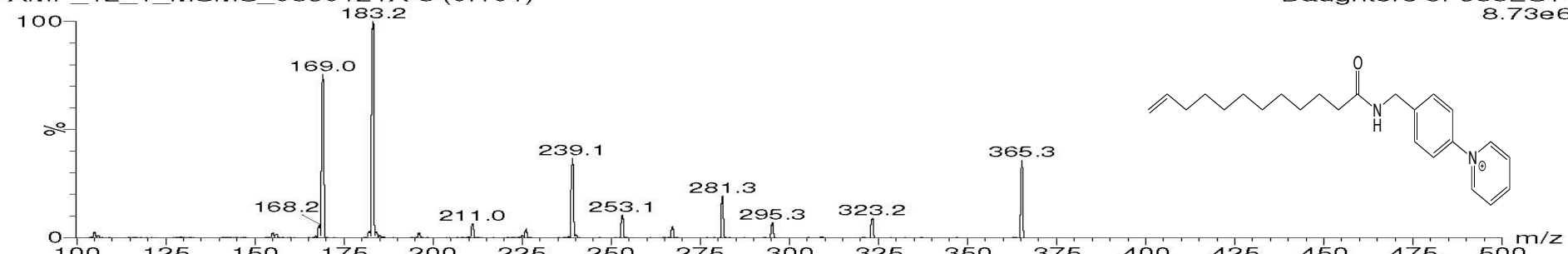
AMP_ARACHIDIC_MSMS_0630121A 47 (0.788)



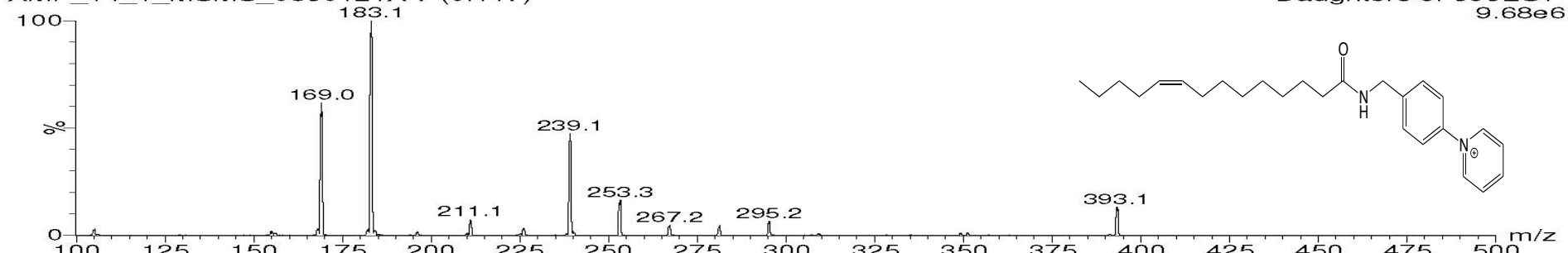
AMP_22_0_MSMS_070212A 55 (0.922)



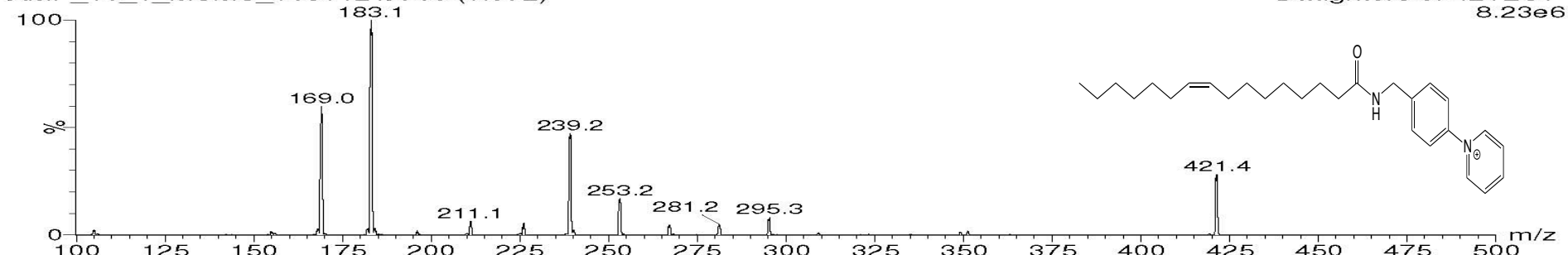
AMP_12_1_MSMS_0630121A 6 (0.101)



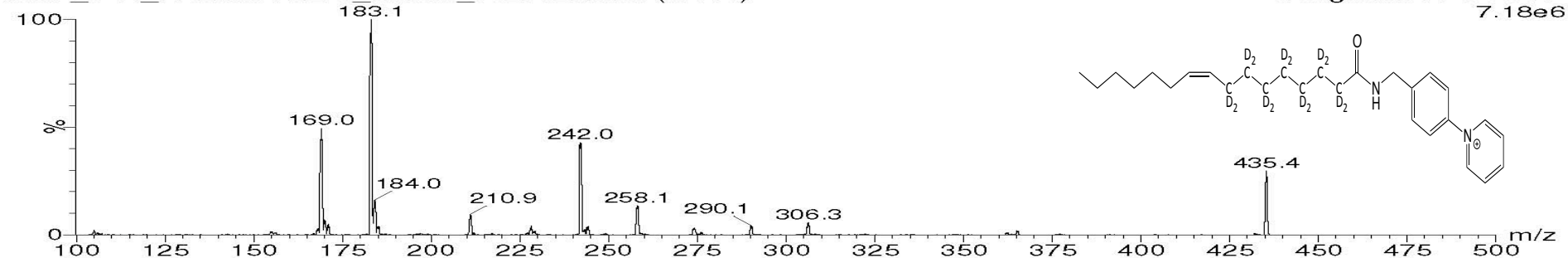
AMP_14_1_MSMS_0630121A 7 (0.117)



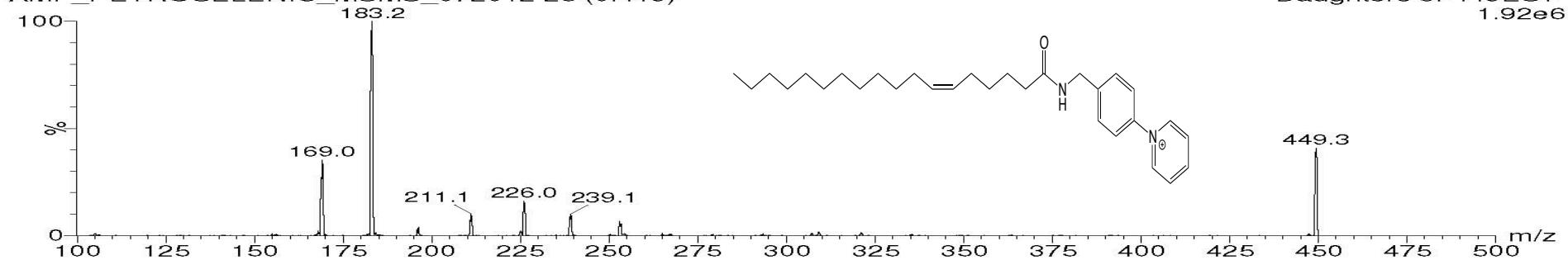
AMP_16_1_MSMS_0630121A 58 (0.972)



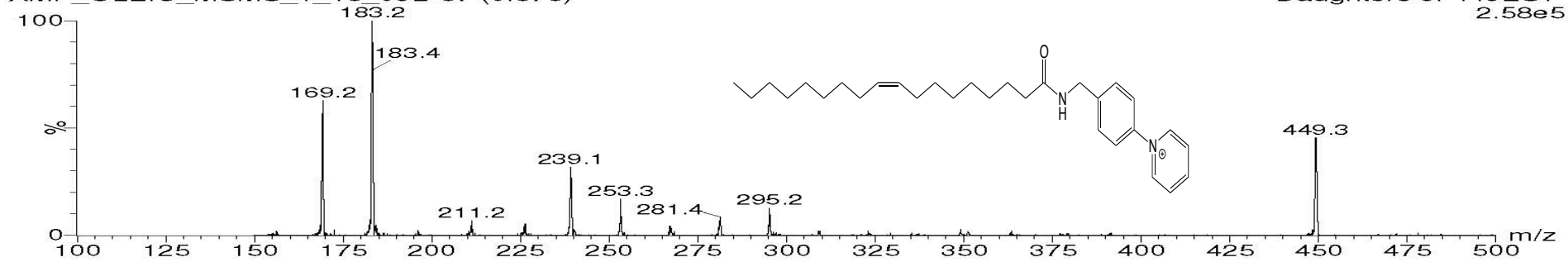
AMP_D14_PALMITOLEIC_MSMS_0621121A 29 (0.486)



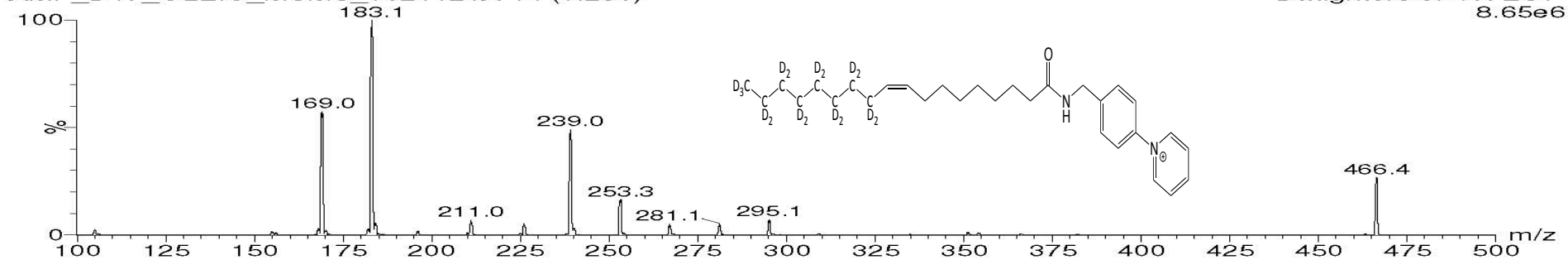
AMP_PETROSELENIC_MSMS_072012 25 (0.419)



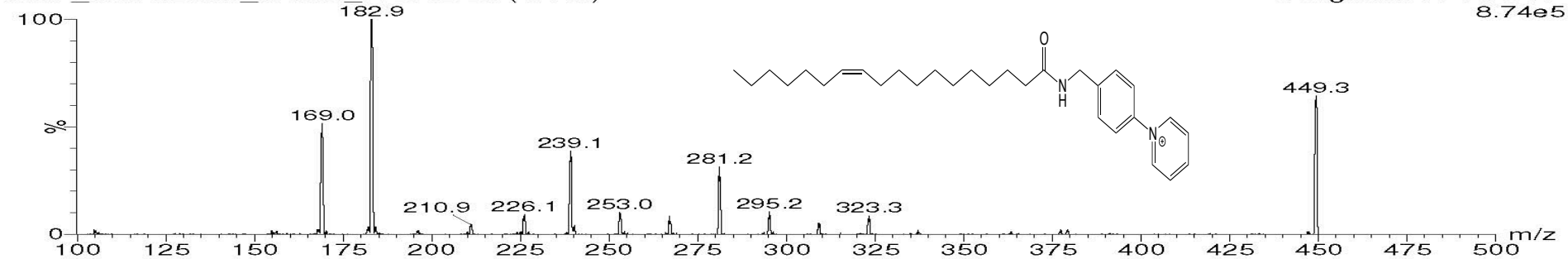
AMP_OLEIC_MSMS_1_16_09B 67 (0.676)



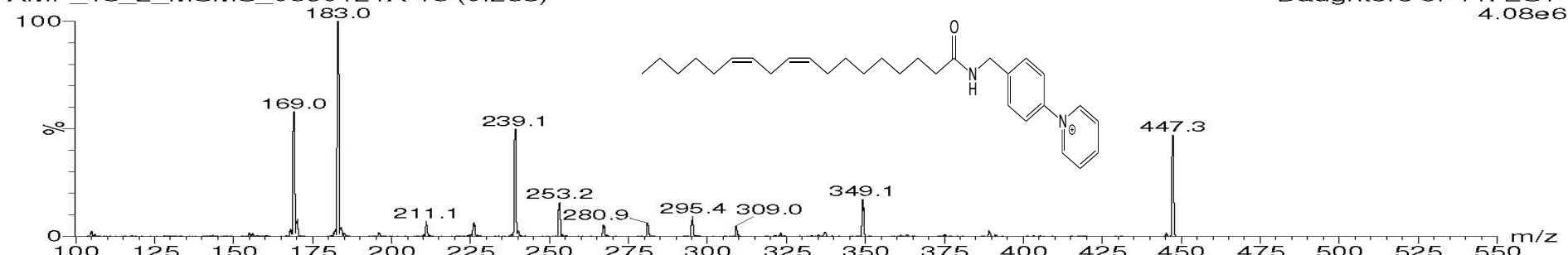
AMP_D17_OLEIC_MSMS_0621121A 14 (0.235)



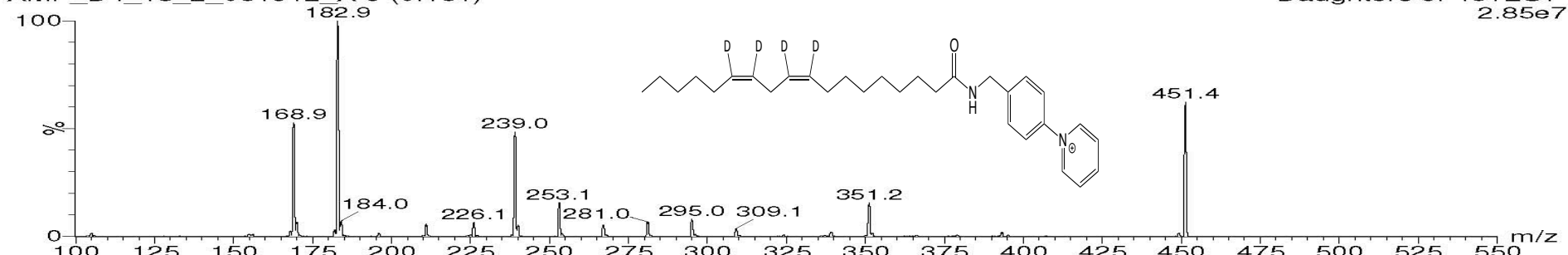
AMP_VACCENIC_MSMS_072012 25 (0.419)



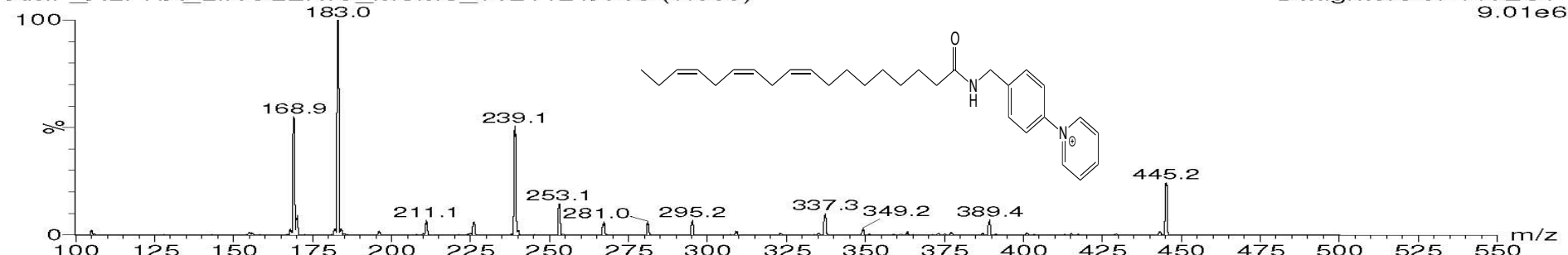
AMP_18_2_MSMS_0630121A 16 (0.268)



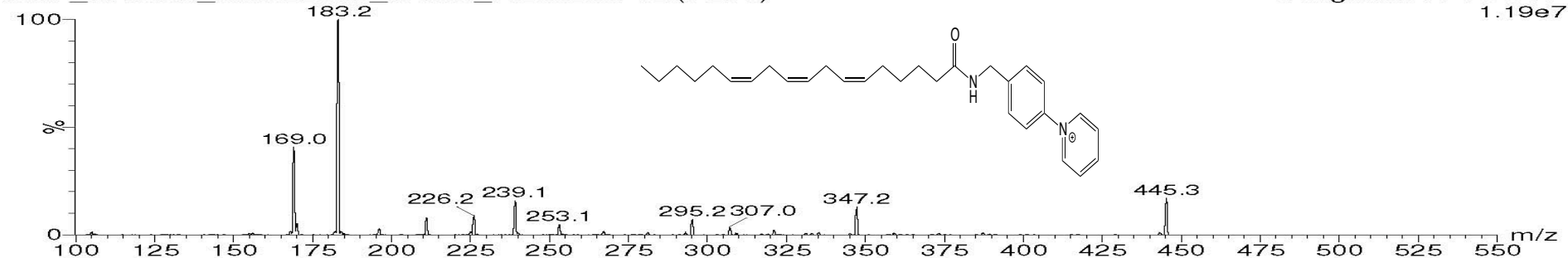
AMP_D4_18_2_051912_A 9 (0.151)



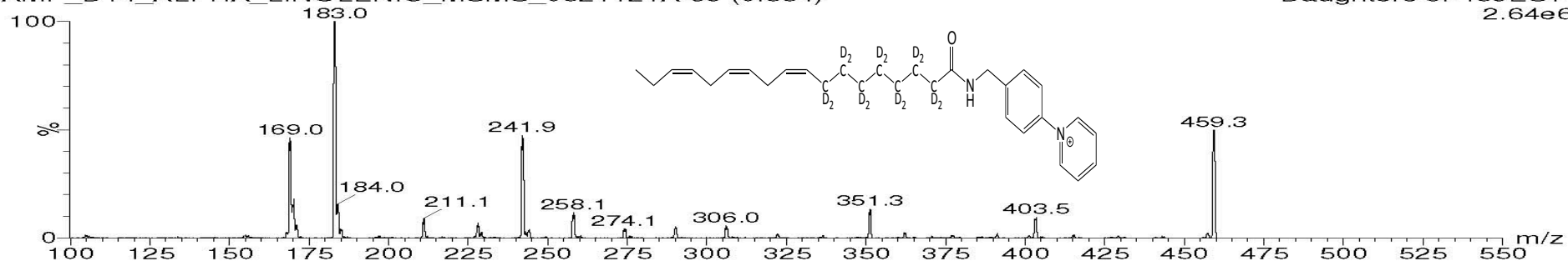
AMP_ALPHA_LINOLENIC_MSMS_0621121A 53 (0.889)



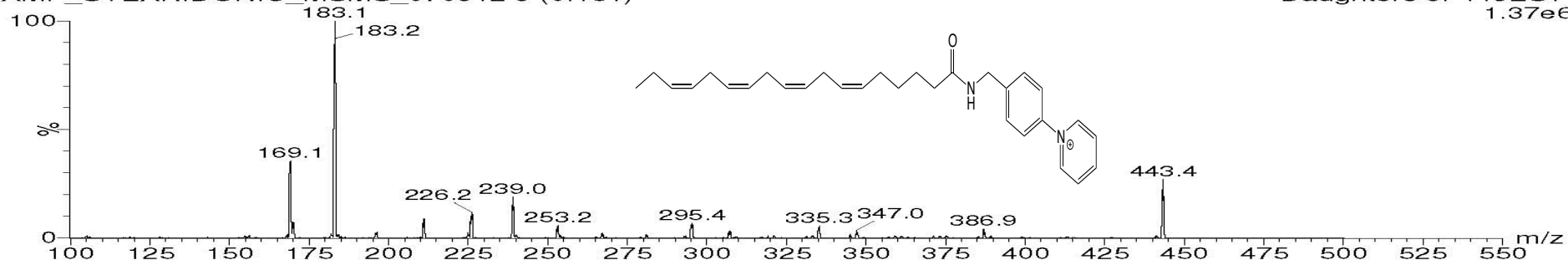
AMP_GAMMA_LINOLENIC_MSMS_0621121C 12 (0.201)



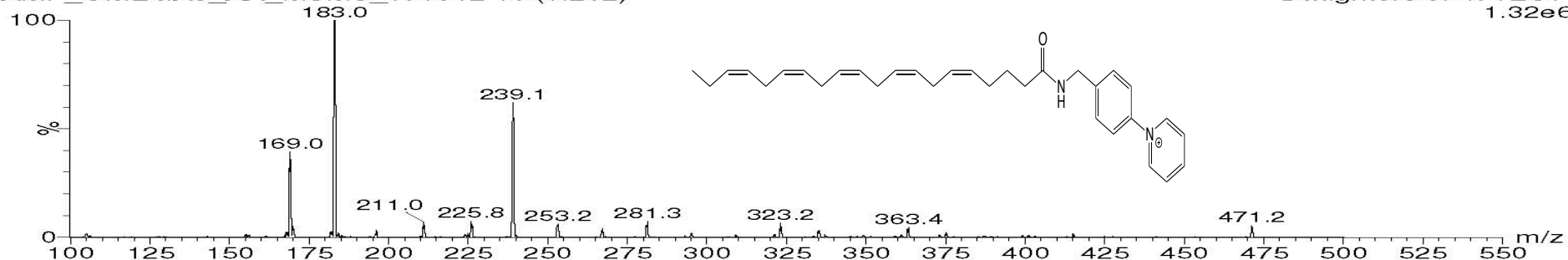
AMP_D14_ALPHA_LINOLENIC_MSMS_0621121A 39 (0.654)

Daughters of 459ES+
2.64e6

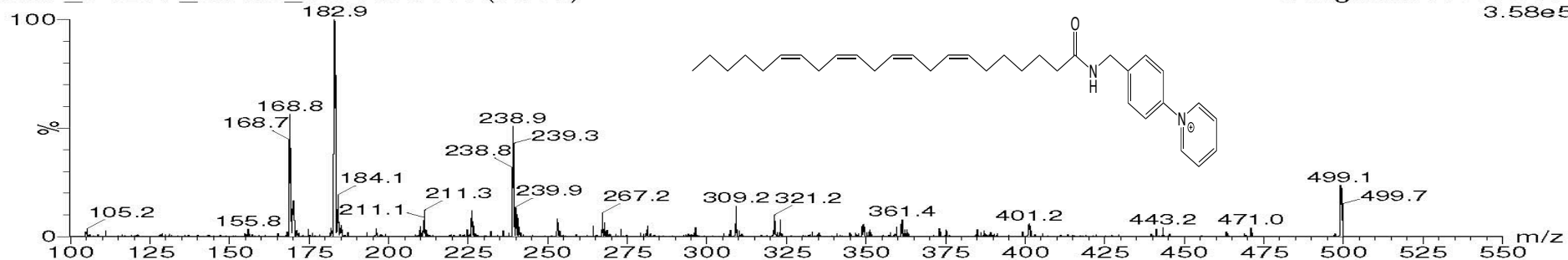
AMP_STEARIDONIC_MSMS_070912 9 (0.151)

Daughters of 443ES+
1.37e6

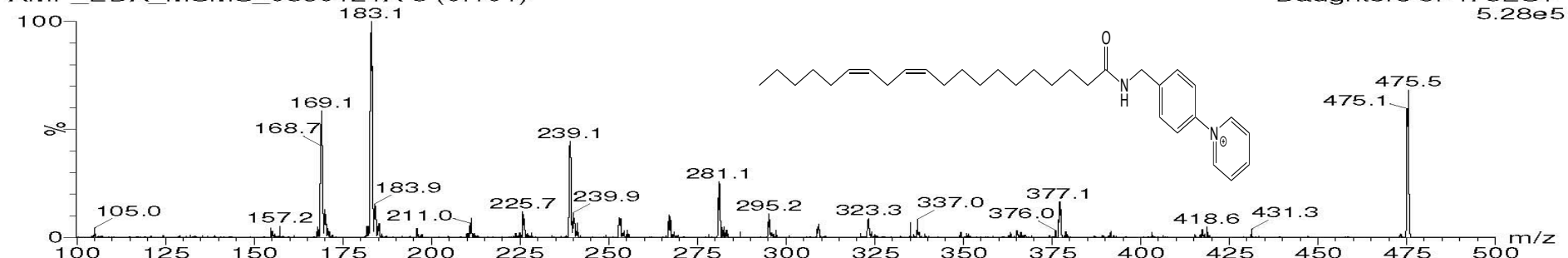
AMP_OMEGA3_AA_MSMS_070912 15 (0.252)

Daughters of 471ES+
1.32e6

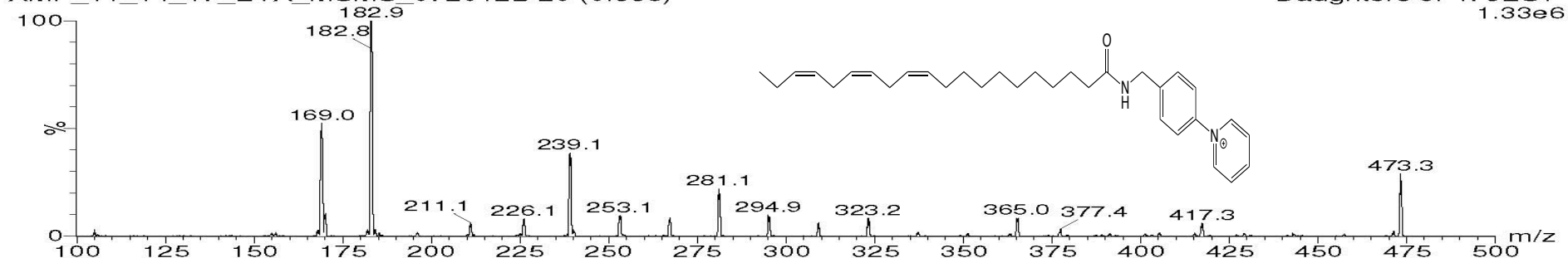
AMP_DTETA_MSMS_0630121A 50 (0.838)

Daughters of 500ES+
3.58e5

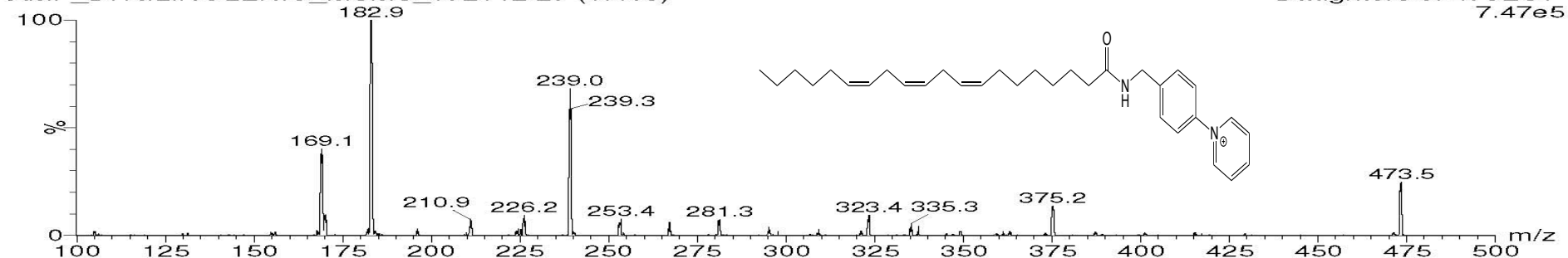
AMP_EDA_MSMS_0630121A 6 (0.101)



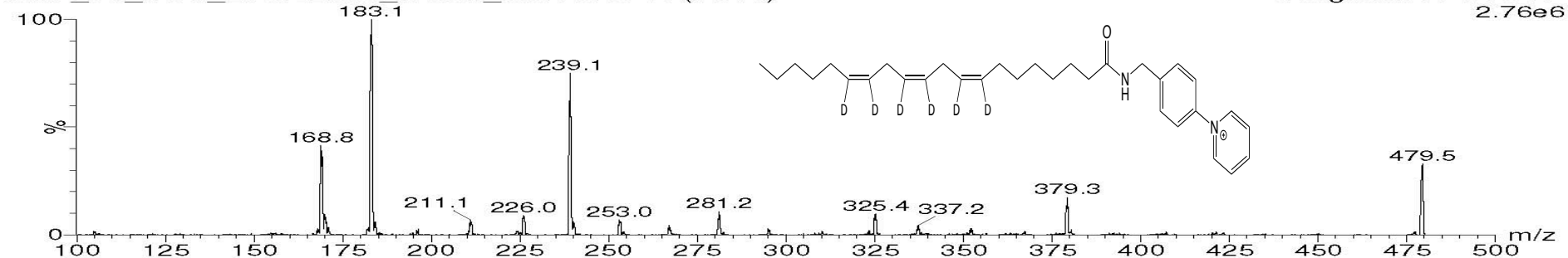
AMP_11_14_17_ETA_MSMS_072012B 20 (0.335)



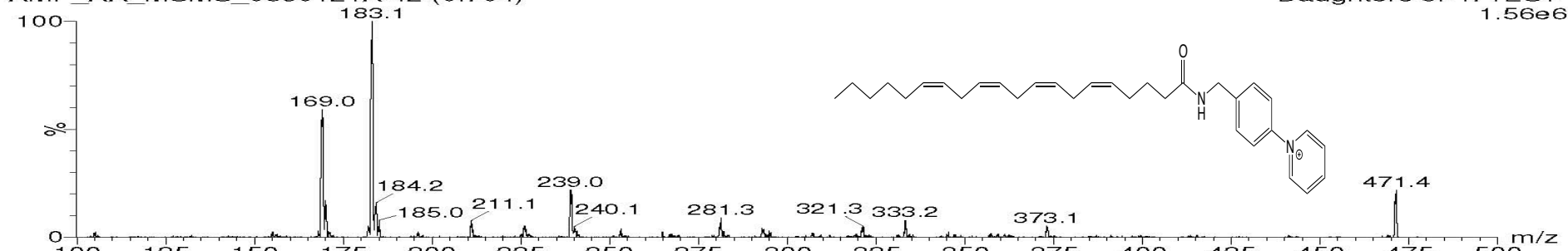
AMP_DHGLINOLENIC_MSMS_072012 27 (0.453)



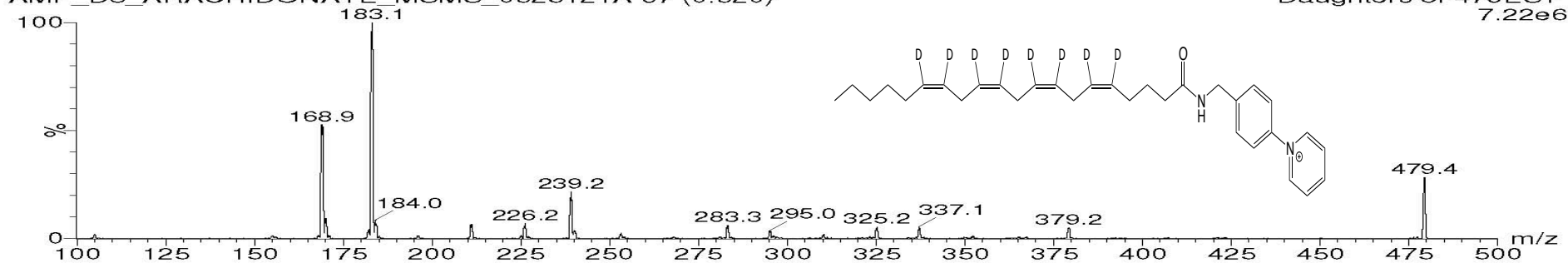
AMP_D6_DHGLINOLENIC_MSMS_0621121B 54 (0.905)



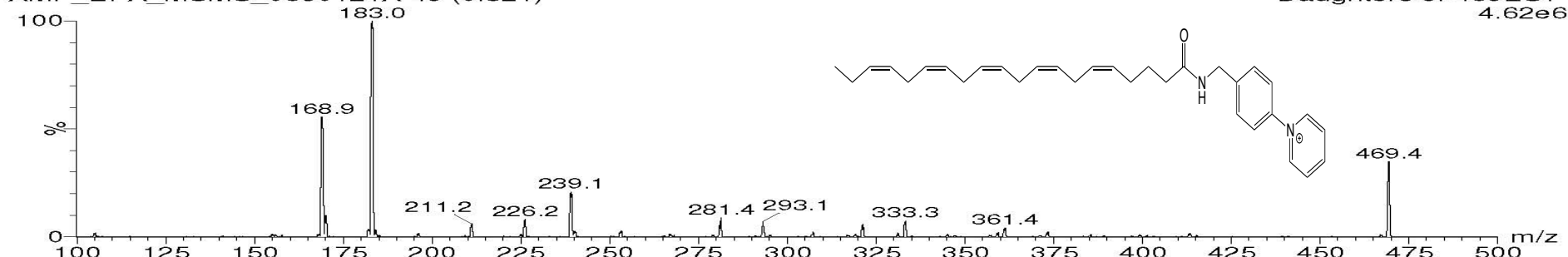
AMP_AA_MSMS_0630121A 42 (0.704)



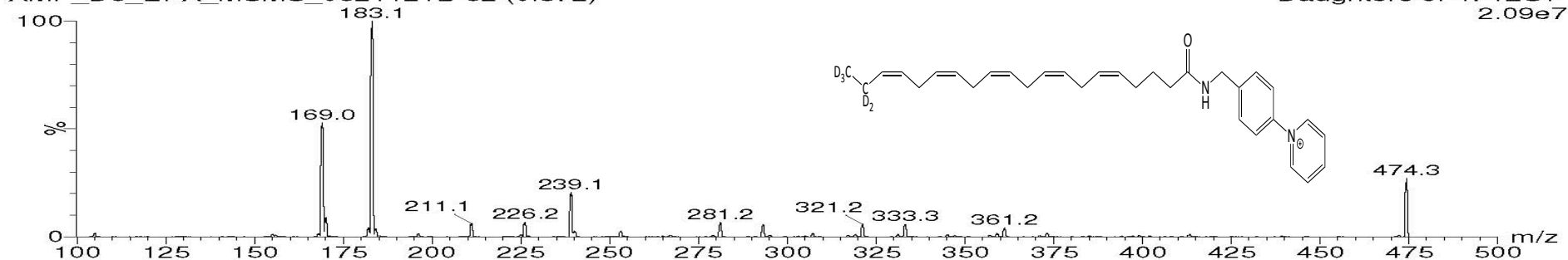
AMP_D8_ARACHIDONATE_MSMS_0625121A 37 (0.620)



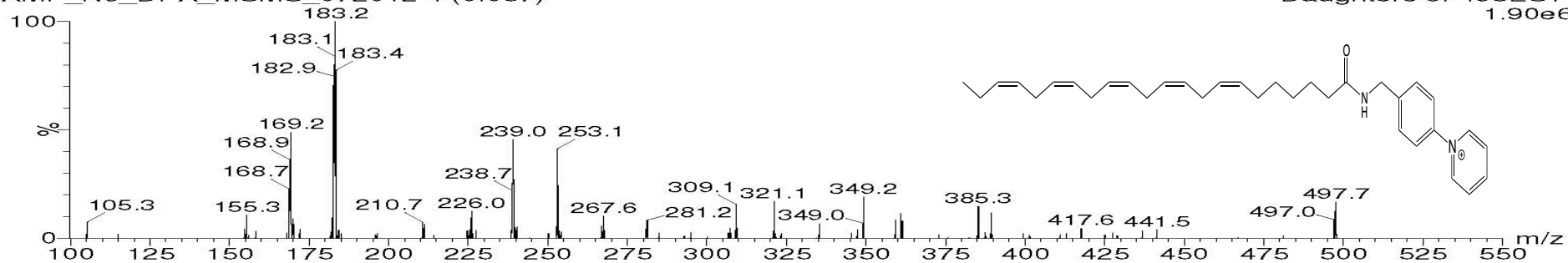
AMP_EPA_MSMS_0630121A 49 (0.821)



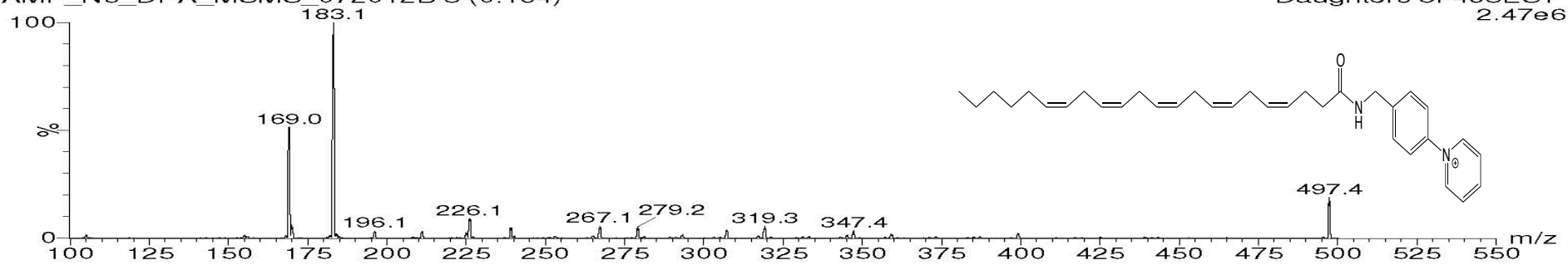
AMP_D5_EPA_MSMS_0621121B 52 (0.872)



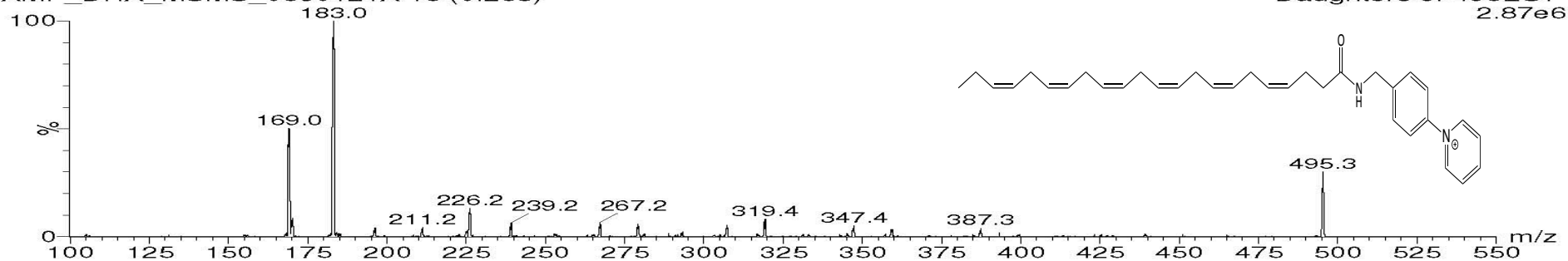
AMP_N3_DPA_MSMS_072012 4 (0.067)



AMP_N6_DPA_MSMS_072012B 8 (0.134)



AMP_DHA_MSMS_0630121A 16 (0.268)



AMP_D5_DHA_MSMS_0621121A 35 (0.587)

