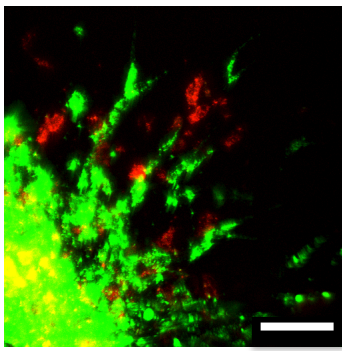
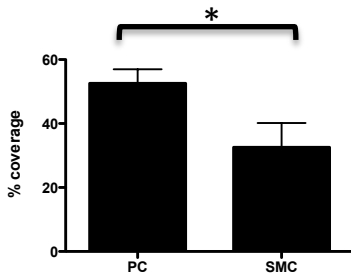
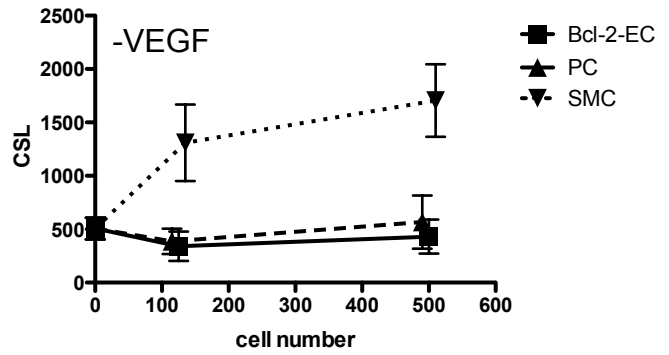
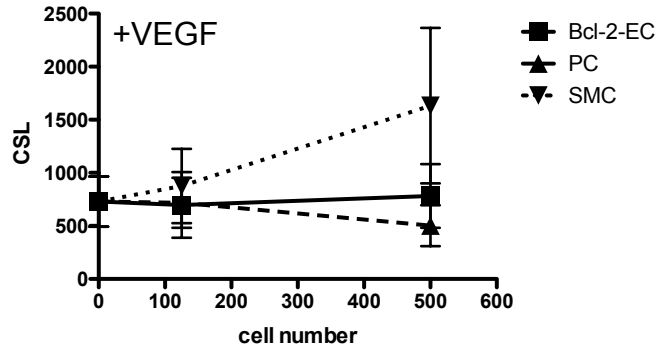


A

Bcl-2-EC
SMC

B**C****D**

Supplemental Figure 2. Sprout formation by mixed spheroids Bcl-2-EC, PC, and SMC. (A) Confocal fluorescence images of 500 Bcl-2-ECs (PKH67 green-labeled cells) with SMCs (PKH26 red labeled cells) mixed spheroid collagen gels with 100 ng/ml VEGF-A. Scale bars is 100 μ m (B) Graph depicts % PC or SMC coverage of Bcl-2-EC sprouts in mixed spheroids in presence of VEGF-A. (*) represents statistically significant difference between groups by unpaired two tailed t-test. (C,D) CSL \pm SD of Bcl-2-EC sprouts in presence of increasing numbers of Bcl-2-ECs, PCs, or SMCs in mixed spheroids without (C) or with (D) 100 ng/ml VEGF-A after 24 hr. Two-way ANOVA analysis of Bcl-2-EC only and mixed Bcl-2-EC/SMC demonstrated statistically significant stimulation with increasing SMCs (without VEGF, N=120, $p < 0.0001$; with VEGF, N=120 spheroids from 2 independent experiments, $p < 0.0001$)