

CLINICAL INVESTIGATIONS

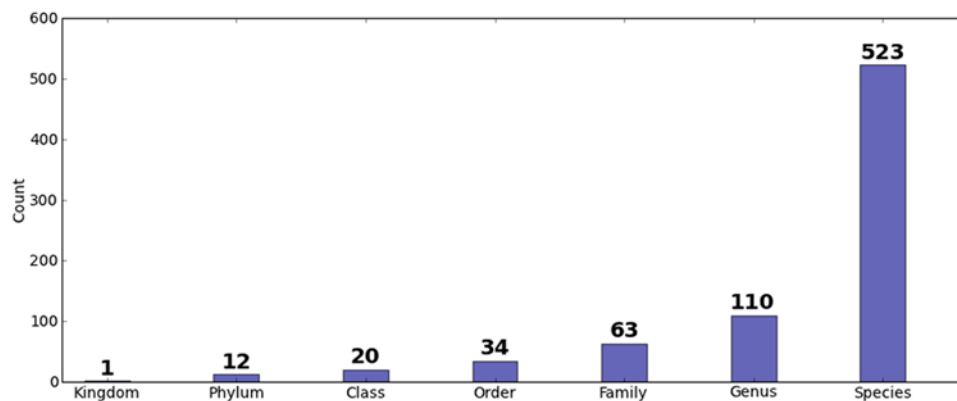
Patient-specific Analysis of Periodontal and Peri-implant Microbiomes

S.M. Dabdoub, A.A. Tsigarida, and P.S. Kumar*

APPENDIX

Appendix Figure.

Distribution of sequences by taxonomic level. The identified phyla were *Firmicutes* (54.2%), *Fusobacteria* (16.8%), *Proteobacteria* (14.8%), *Bacteroidetes* (7.59%), *Actinobacteria* (4.43%), *Synergistetes* (0.94%), *TM7* (0.74%), *Spirochaetes* (0.55%), *Tenericutes* (0.02%), *Chloroflexi* (0.01%), and *Cyanobacteria* (0.01%). At the genus level, the most highly abundant entries were *Streptococcus* (25.4%), *Fusobacterium* (15.2%), *Veillonella* (7.8%), and *Prevotella* (3.7%).



DOI: 10.1177/0022034513504950. Division of Periodontology, College of Dentistry, The Ohio State University, Columbus, OH, USA; *corresponding author, kumar.83@osu.edu

© International & American Associations for Dental Research

Appendix Table.

Demographic Characteristics Analyzed Based on Health Status (mean percentages)

Demographic Characteristics	Healthy Tooth/ Healthy Implant (n = 33)	Healthy Tooth/ Diseased Implant (n = 23)	Diseased Tooth/ Healthy Implant (n = 8)	Diseased Tooth/ Diseased Implant (n = 17)
Age (yrs ± SD)	56.3 ± 14.3	53.6 ± 12.8	64.3 ± 9.71	57.2 ± 16.9
Sex (% males)	63%	52.1%	25%	52.9%
Ethnicity				
Caucasian	75%	91.3%	75%	76.4%
African American	15%	4.3%	25%	11.7%
Asian	9%	4.3%	—	11.7%
Smokers %	51.5%	52.1%	50%	41%
Implant characteristics				
Hx of implant loss %	3.1%	13%	12.5%	5.8%
Hx of bruxism %	6.4%	17.3%	—	29.4%
No. of implants (± SD)	2.6 ± 1.4	2.2 ± 1.9	2.3 ± 1.5	2.4 ± 1.7
Implant type				
Astra (Osseospeed)	24%	13%	25%	23.5%
Zimmer (MTX)	39.3%	47.8%	37.5%	47%
Nobel	12%	17.3%	12.5%	17.6%
Straumann	6%	4.3%	25%	—
3i	9%	4.3%	—	5.8%
Calcitek	6%	8.6%	—	5.8%
Paragon	3%	4.3%	—	—
Implant location				
Mandibular anterior	3%	—	—	—
Maxillary anterior	24.2%	21.7%	12.7%	5.8%
Mandibular posterior	27.2%	39.1%	62.5%	47%
Maxillary posterior	45.5%	39.1%	25%	47%
Yrs in function (± SD)	4.5 ± 3.0	5.9 ± 4.4	4.9 ± 4.0	5.5 ± 5.0
Implant clinical characteristics				
Modified Gingival Index	0.3 ± 0.3	2.0 ± 0.2	0.3 ± 0.3	2.0 ± 0.1
Modified Plaque Index	0.55 ± 0.2	1.3 ± 0.1	0.45 ± 0.1	1.5 ± 0.1
Bleeding on probing (frequency)	0%	100%	0%	100%
PD (mm)	2.94 ± 0.44	4.35 ± 0.56	2.76 ± 0.32	4.76 ± 0.54
Tooth clinical characteristics				
Modified Gingival Index	0.2 ± 0.1	2.2 ± 0.15	0.3 ± 0.12	2.4 ± 0.18
Modified Plaque Index	0.43 ± 0.2	1.2 ± 0.1	0.42 ± 0.4	1.3 ± 0.2
Bleeding on probing (frequency)	0%	100%	0%	100%
PD (mm)	2.34 ± 0.22	4.85 ± 0.56	2.6 ± 0.3	5.06 ± 0.41
CAL (mm)	1.65 ± 0.12	2.35 ± 0.16	1.16 ± 0.15	3.18 ± 0.13

No statistically significant differences were found among the 4 groups on any of the clinical descriptors.