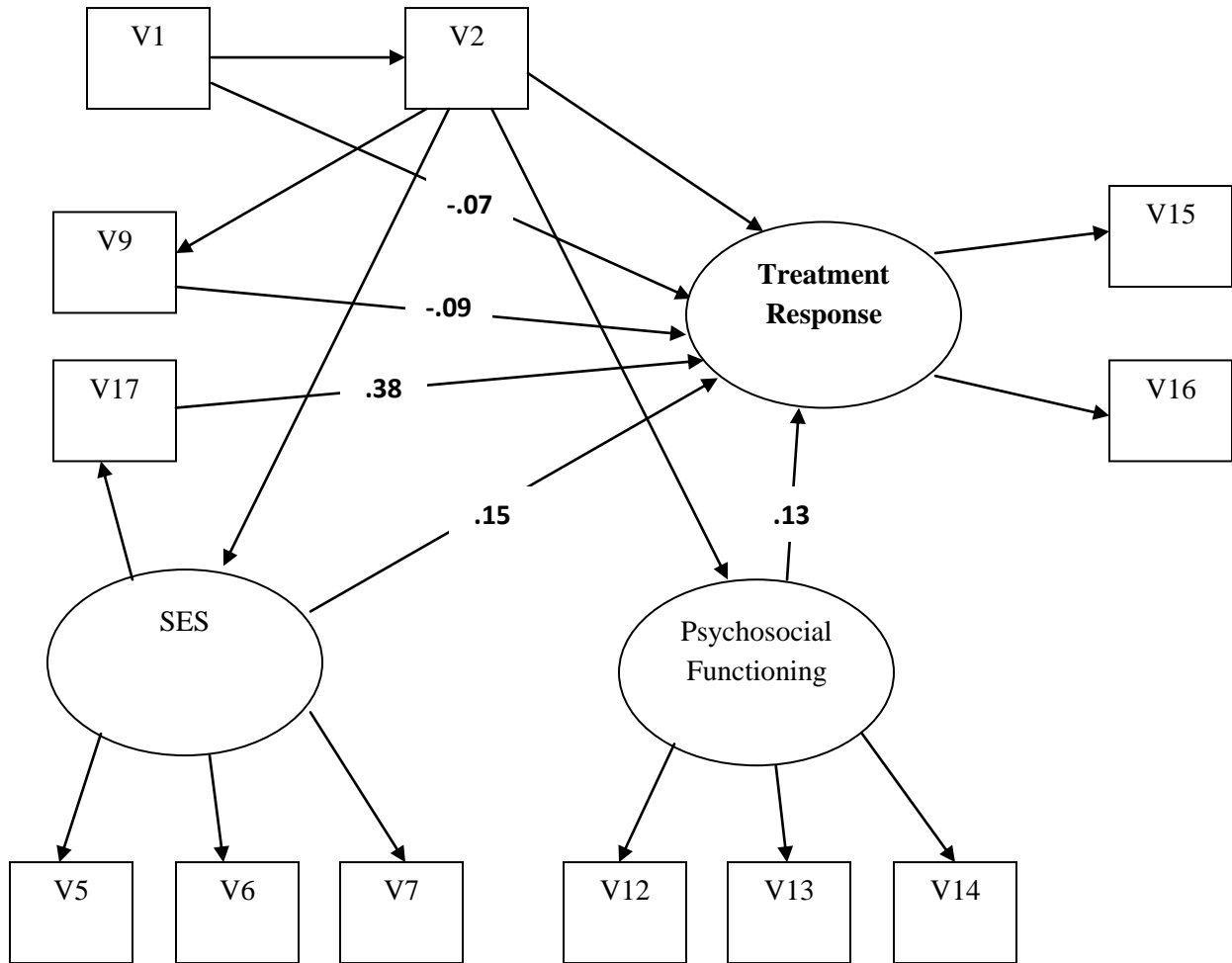


**Figure S2.**

*Model 3 Effects of genetic ancestry, race and other variables on TR*

**Chi-square (model fit): 854.52, df=47**  
**CFI/TLI: .882/.803**  
**RSMEA: .096**



Note. Coefficients (rounded to two decimal places) are shown only for direct paths to Treatment Response significant at  $p \leq .05$ . For all models, coefficients are in standardized units, i.e., the effect of one standard deviation change in predictors on corresponding change in Treatment Response.