

**Heritable variations and small RNAs in the progeny of the chimeras between
Brassica juncea and *Brassica oleracea***

*Junxing Li, Yan Wang, Langlang Zhang, Bin Liu, Liwen Cao, Zhenyu Qi, and Liping
Chen*

Supplementary Data

Table S1 The identified sequences of sRNAs transmitted between the TTT and CCC lineages

Sequences of sRNA (5'→3')	Type	TTT	rTTT (Code-reads)	CCC (Code-reads)
AAGGTACATGTGGAATGCGGTTA	unann	-----	t0000960-538	t0002237-424
AAAGGTACATGTGGAATGCGGTTG	unann	-----	t0001593-356	t0033213-37
AAAGGTACATGTGGAATGCGGTT	unann	-----	t0004339-157	t0021041-57
ATGCTGAGAACTGATAGCAAGC	unann	-----	t0005144-136	t2420289-1
TATGCTGAGAACTGATAGCAAGCT	unann	-----	t0006260-116	t5483730-1
AAGGTACATGTGGAATGCGGTTGC	unann	-----	t0006485-112	t0124097-11
ATGCTGAGAACTGATAGCAA	unann	-----	t0007053-104	t0740978-2
GTAAAGGTACATGTGGAATGCGGT	siRNA	-----	t0008369-90	t0064305-20
AAGGTACATGTGGAATGCGGTTG	unann	-----	t0009102-84	t0025873-47
TTTGGCTCTGTTTCCTTCTCT	unann	-----	t0010490-74	t0071813-18
TACATGTGGAATGCGGTTGCCTA	unann	-----	t0014780-56	t0144381-10
GTAAGAACTCAGGAAGAAGAACA	unann	-----	t0014890-55	t0000963-882
TGTAAAGGTACATGTGGAATGCGG	unann	-----	t0015927-52	t0077017-17
GCGGAAGATGTAACGGGGCTAAGCAG	unann	-----	t0017282-49	t0118751-12
AGTGAAATCGAGTAGGACGGA	unann	-----	t0017809-47	t2650510-1
CTCTATGCTGAGAACTGATAGCA	unann	-----	t0019905-43	t1118869-2
GTGCAATCTCGGGAGACAGACATC	unann	-----	t0020635-42	t0027997-44
ATACACGGCGTTAGATTTATATAA	unann	-----	t0020165-42	t0784427-2
AAAAGTAGTAACCATAACAAGTCCA	unann	-----	t0022027-39	t0041261-30
ACAGACATCAGAGACAAGGTTAAT	unann	-----	t0022843-38	t0009445-119
TATGCTGAGAACTGATAGCAA	unann	-----	t0023115-38	t5178547-1
AAGTGAAATCGAGTAGGACGGA	unann	-----	t0026741-33	t0957925-2
GGGGGACGGACTGGGAACGGCTCTTTC	unann	-----	t0027657-32	t0009118-123
AGGAGAATAGACGATGATTGGTAT	unann	-----	t0028004-32	t0062501-21
ATCGGTTACTCTGTTTCAGAAGAT	siRNA	-----	t0027573-32	t0102285-13
AGTGAAATCGAGTAGGACGG	unann	-----	t0027394-32	t1964653-1
ACTGGACCAAGAAGTATTAGGGCT	unann	-----	t0029138-31	t1290252-2
ACGTGGCAACGGTAGTGTGAATA	unann	-----	t0028814-31	t4280190-1
ATGTGGAATGCGGTTGCCTAGATA	unann	-----	t0030271-30	t5747995-1
GGACGGACTGGGAACGGCTCTT	unann	-----	t0032365-28	t0002627-372
AAGATGTAACGGGGCTCAAGCGGT	unann	-----	t0032523-28	t0609299-3
GCAATCTCGGGAGACAGACATC	unann	-----	t0034661-26	t0057436-22
GCTGAGAACTGATAGCAAGCT	unann	-----	t0036719-25	t3200630-1
AAAGGTACATGTGGAATGCGGTTA	unann	-----	t0038979-24	t0127361-11
TTAAGTGGGAAACGATGTG	unann	-----	t0039511-24	t0688133-3
AATCTCGGGAGACAGACATC	unann	-----	t0038576-24	t1005291-2
CGGGGACGGACTGGGAACGGCTCTTT	unann	-----	t0041281-23	t0013657-85
TCGTGTCCCGGCGACGGAGCCA	unann	-----	t0041164-23	t5423306-1

AGTAACTCAGCTGAATTGTGGACA	unann	-----	t0042093-22	t0025670-47
TTAATGCCGAGAACTGATGACGATCCT	unann	-----	t0041578-22	t1399293-1
TTTAGGTAGCGCCTCGGACG	unann	-----	t0045590-21	t5219285-1
AAAGACAAACAGAGCGACAAAGAA	unann	-----	t0046669-20	t0032140-38
AGGTACATGTGGAATGCGGTTA	unann	-----	t0046916-20	t0046444-27
CAATCTCGGGAGACAGACATC	unann	-----	t0046674-20	t0060669-21
AACAGACCGGCAAACACTCAGCAT	unann	-----	t0046729-20	t0171980-8
ATGTAGCGACTGGTGTATGATTTC	unann	-----	t0048460-20	t0439762-4
GAGACTAGAACTCATAAGGAAGAA	unann	-----	t0046996-20	t0899181-2
AAGTCAAATCGAGTAGGACGG	unann	-----	t0047021-20	t2981912-1
TGAAGCGGTGGAGGCGTCTGTTA	unann	-----	t0046366-20	t1792853-1
ATCATGCGATCTCTTTGGATT	miRNA	-----	t0143145-8	t4900520-1
AGTAGCCAAGGATGACTTGCCTG	miRNA	-----	t0241371-5	t0095499-14
TTGACAGAAGATAGAGAGCACAGA	miRNA	-----	t0247812-5	t4164689-1
GCTCACTGCTCTTTCTGTCAGAT	miRNA	-----	t0369298-4	t0339552-5
GACAGAAGAAAGAGAGCAC	miRNA	-----	tt0827890-2	t3583171-1
TCAATAAAGCTGTGGGAAGATA	miRNA	-----	t0856757-2	t3827040-1
TGATTGAGCCGTGTCAATATC	miRNA	-----	t1797662-1	t0790631-2
TGACAGAAGAAAGAGAGCACA	miRNA	-----	t3631105-1	t0043530-29
GGTGACAGAAGAGAGTGAGCA	miRNA	-----	t4425956-1	t1203125-2

-----stands for sRNAs not observed in TTT

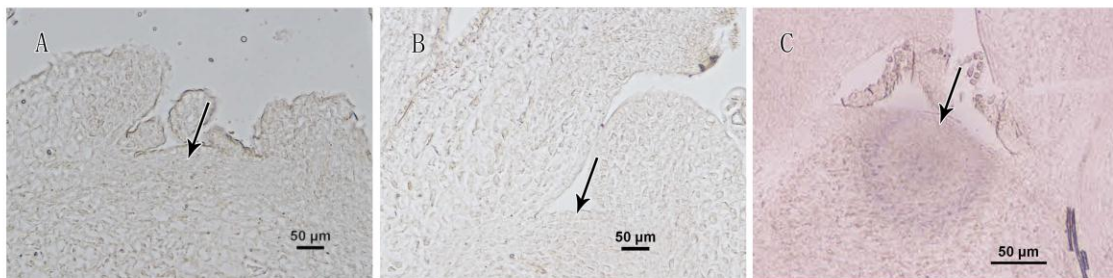


Fig. S1 The control hybridization. A, B and C: The whole SAM of tuber mustard, red cabbage and one chimera was respectively hybridized without containing probes in hybridization mixture. Bar=50µm, the arrows indicate the SAM.