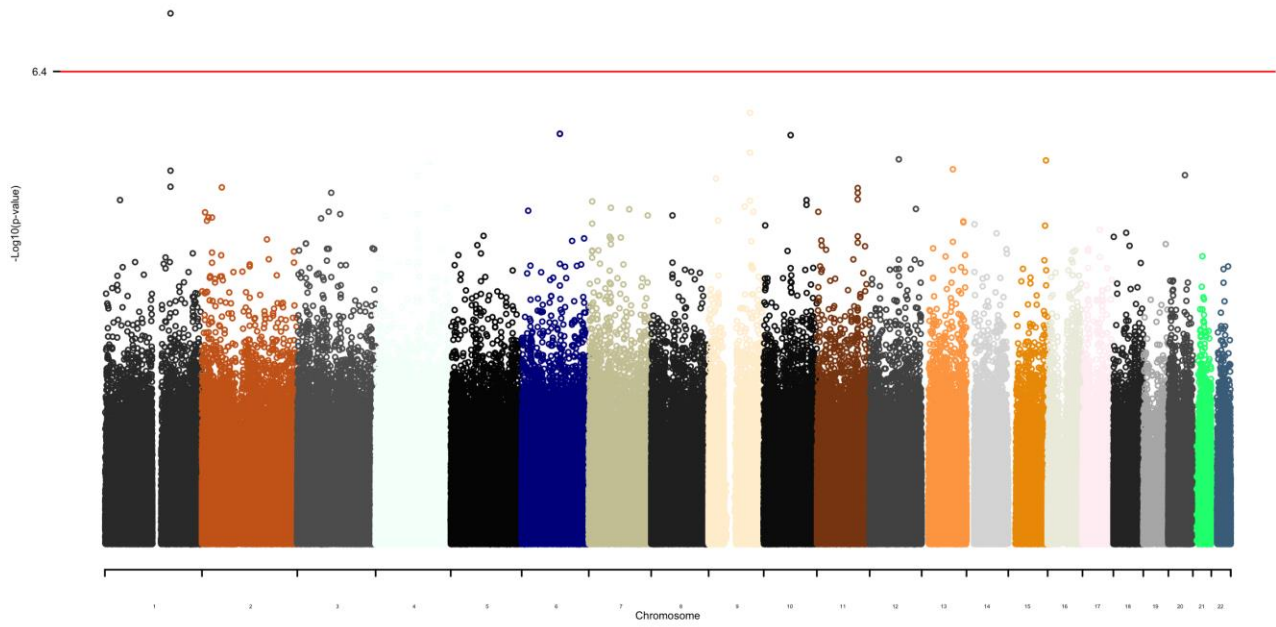
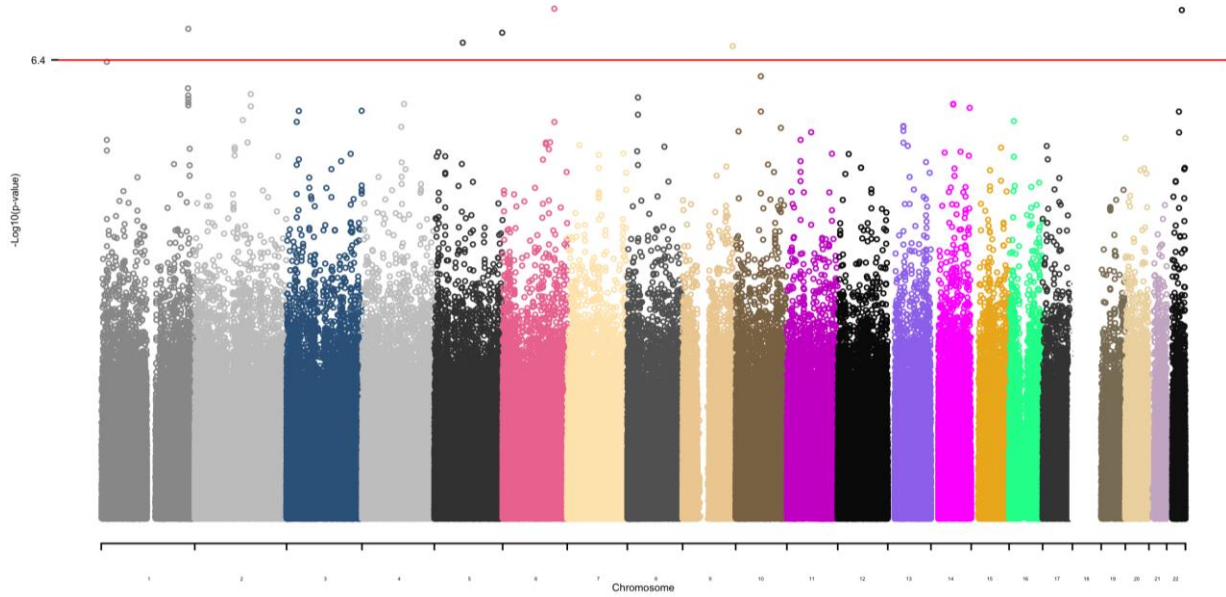


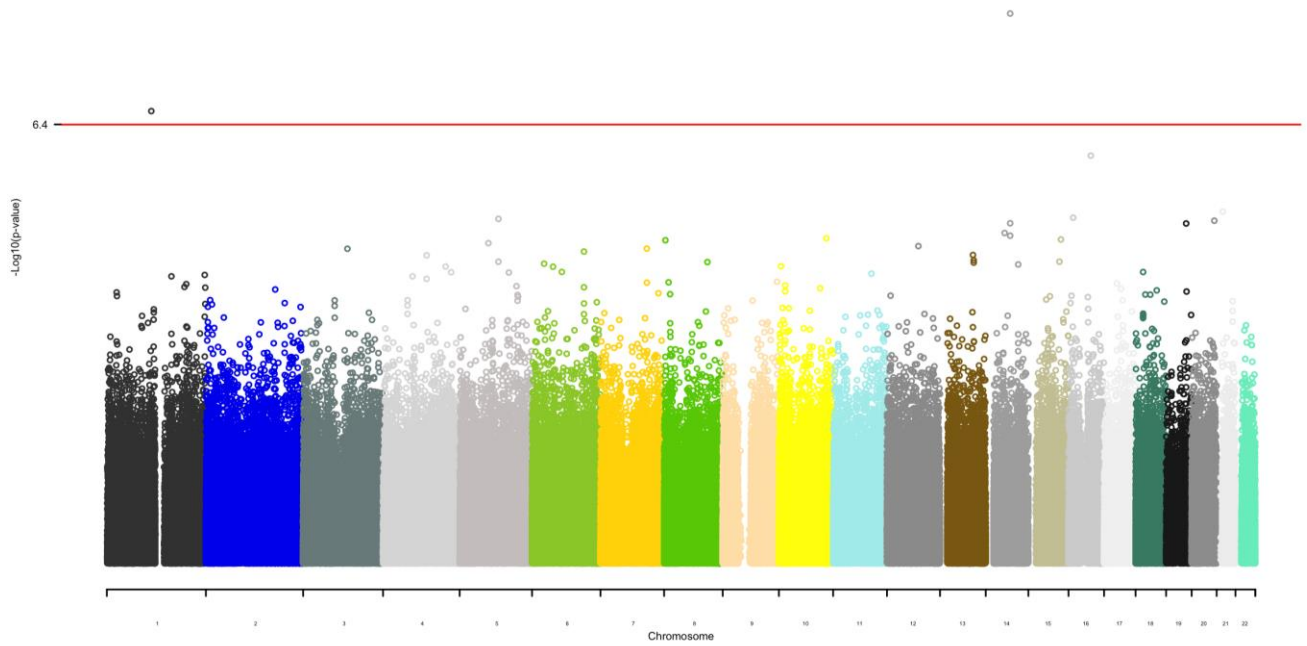
## AA APOExSNP Interactions for CHD



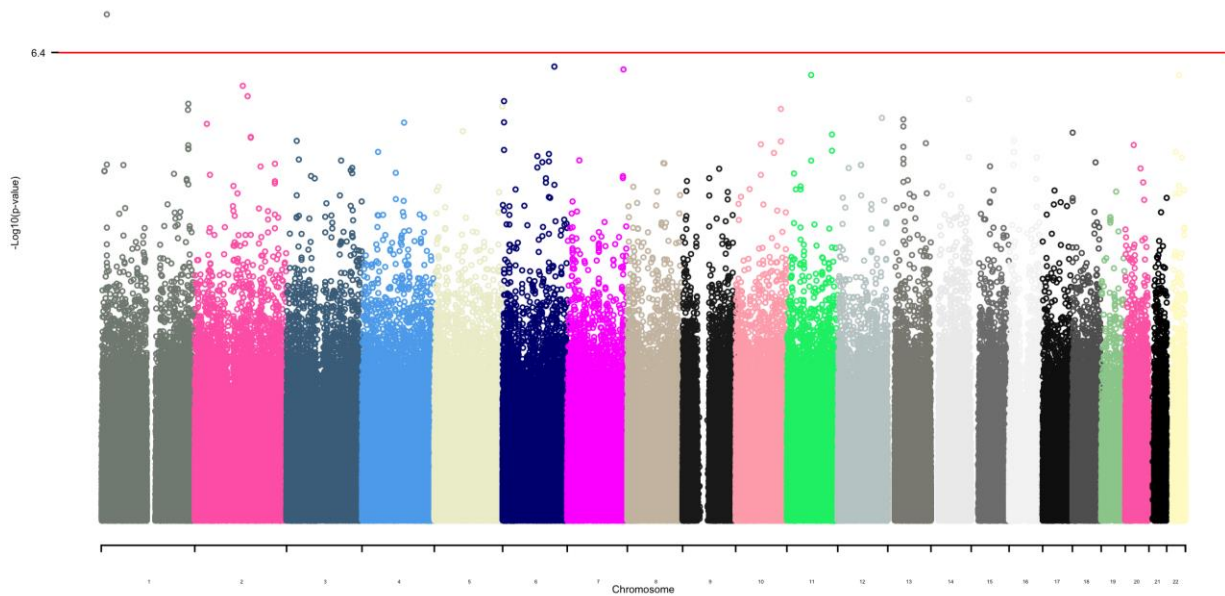
## AA APOExSNP Interactions for Total Cholesterol



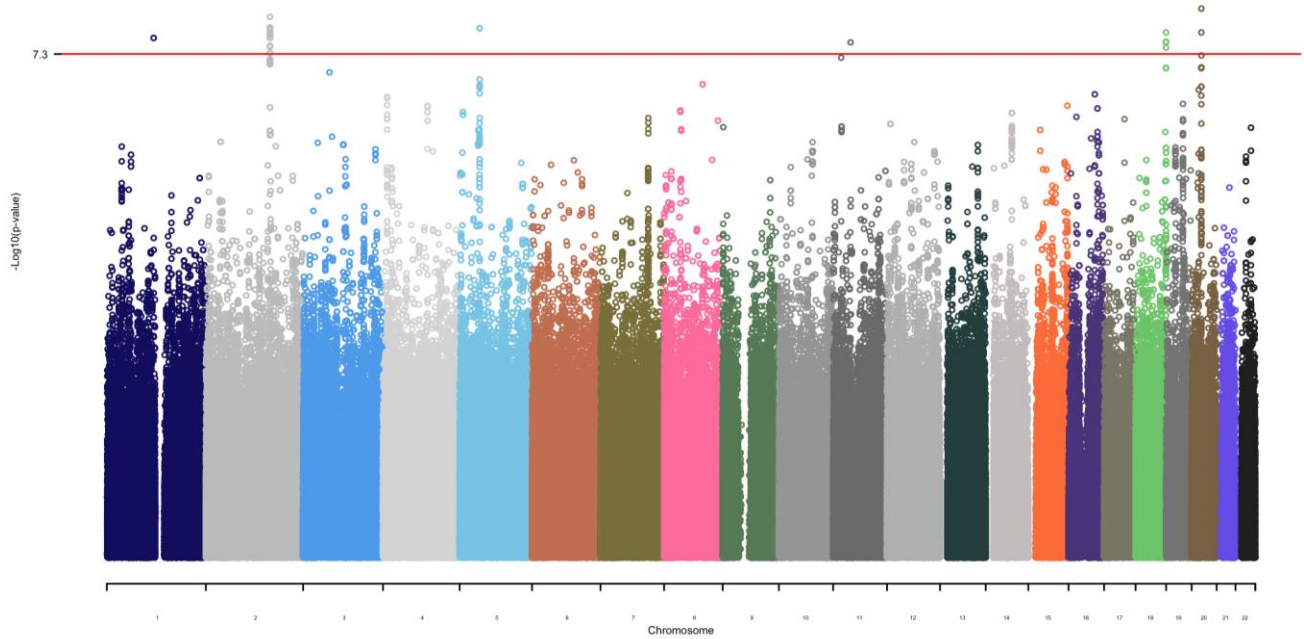
## AA APOExSNP Interactions for HDL



## AA APOExSNP Interactions for LDL



## AA APOExSNP Interactions for Total Cholesterol



**Figure S4** Manhattan plots for each of the APOExSNP scans. These plots are for the original parametric tests. Note that the SNP density in the European American population is about three times that of the African American population. This would lead to greater clustering around highly significant SNPs.