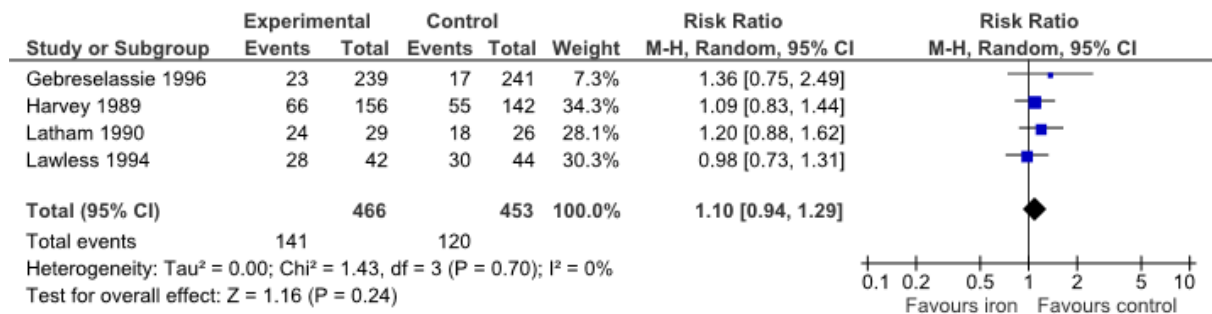


## Appendix 4: Safety

Forest plots for (A) malaria parasitemia at endpoint (RR 1.10 [0.94 - 1.29],  $p=0.86$ ,  $I^2=93\%$ , 4 studies, 919 children) and (B) gastrointestinal upset (RR 1.30 [0.89 - 1.91],  $p=0.17$ ,  $I^2=0\%$ , 4 studies, 576 children) both showing no difference between iron supplemented children and controls. Inverse Variance. M-H: Mantel-Haenszel. Random: Random Effects. 95% CI: 95% Confidence Interval. Df: degrees of freedom.

**A**



**B**

