

Supplemental Data

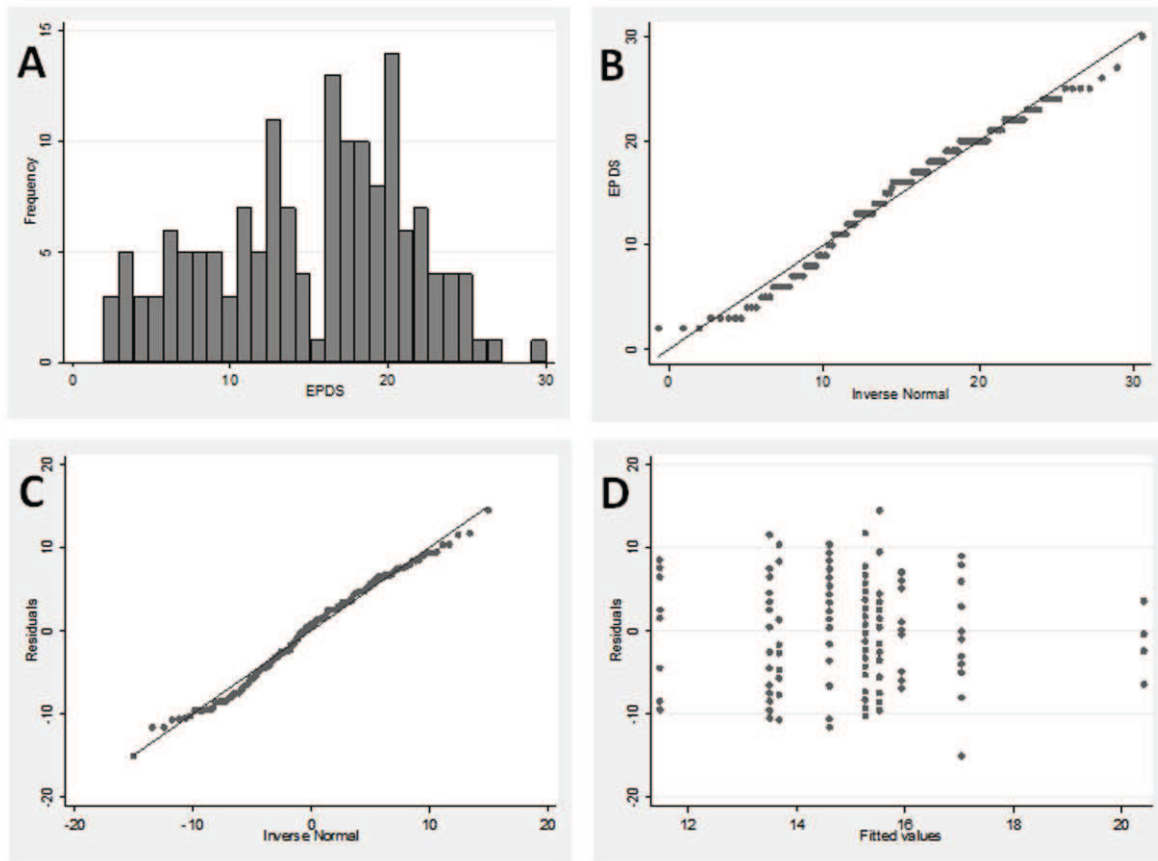


Figure S1: A): A histogram of EPDS score distribution. B): The Q-Q plot of linear regression with 'EPDS' as the outcome. All residuals appeared fine (plots C and D), and any log-transform of the outcome made the residuals significantly worse. C): A Q-Q plot for the residuals from the interaction model showing that normality is not violated. D): Residuals vs. fitted values demonstrating that the assumption of constant variance is not violated, and they also appear, for the most part, centered at zero. All model assumptions appear satisfied.