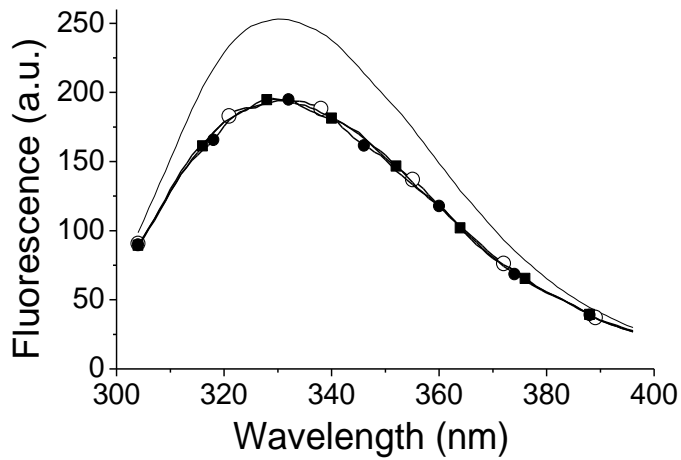
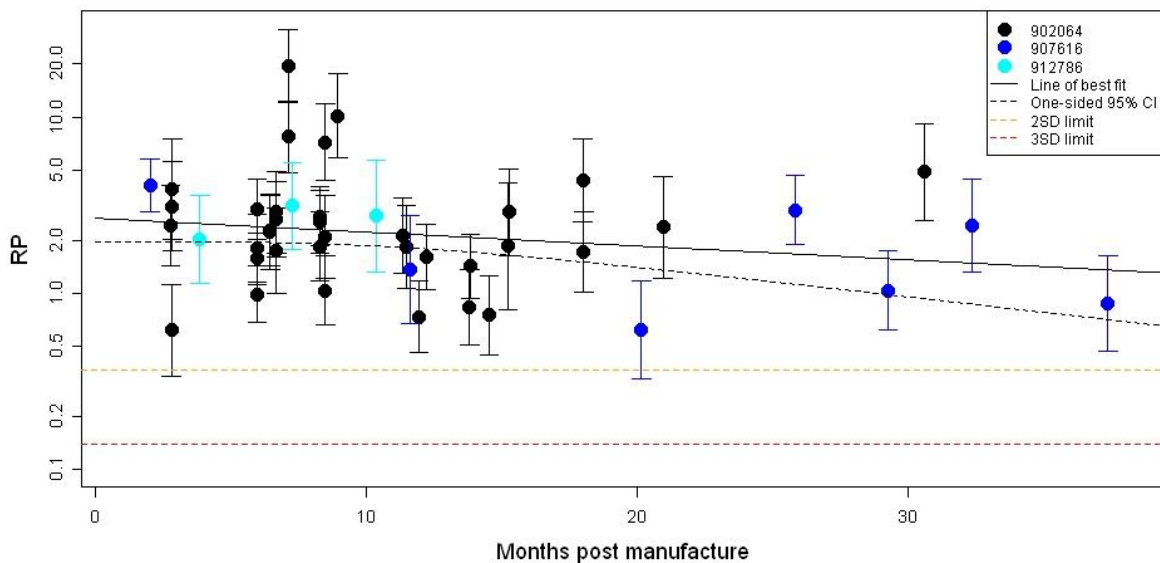


Supplementary figures.



Supplementary Figure 1: Tryptophan fluorescence: solid line = rPA without adjuvant; line with empty circle = rPA on Alhydrogel, line with filled circle = rPA on Alhydrogel in 5 mM phosphate; and line with filled square = rPA on Alhydrogel in 10 mM phosphate.



Supplementary Figure 2: Stability trending analysis using pooled data from three batches of 4mM phosphate and comparing to a freshly formulated rPA-AIOH standard. Based on the 95% confidence interval crossing a RP limit, the estimate of shelf life for a 2SD RP limit of 0.37 is 53 months. If a stricter RP limit of 0.5 is applied the estimated shelf life is 46 months.