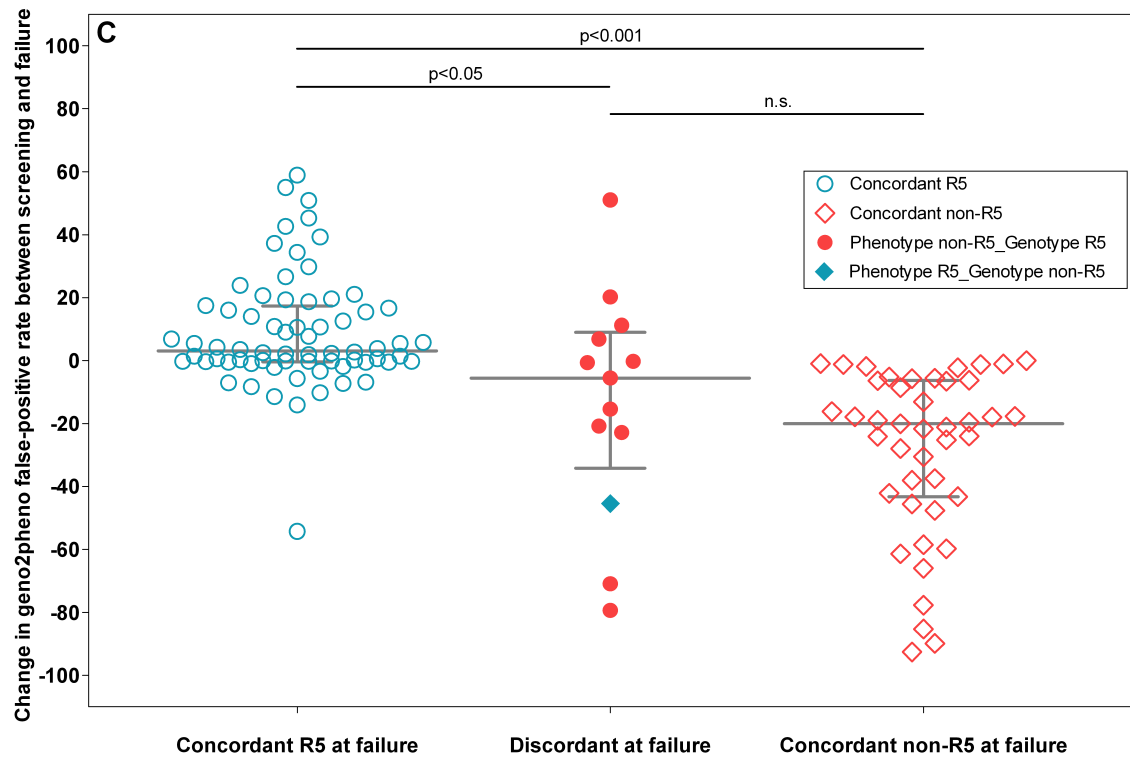
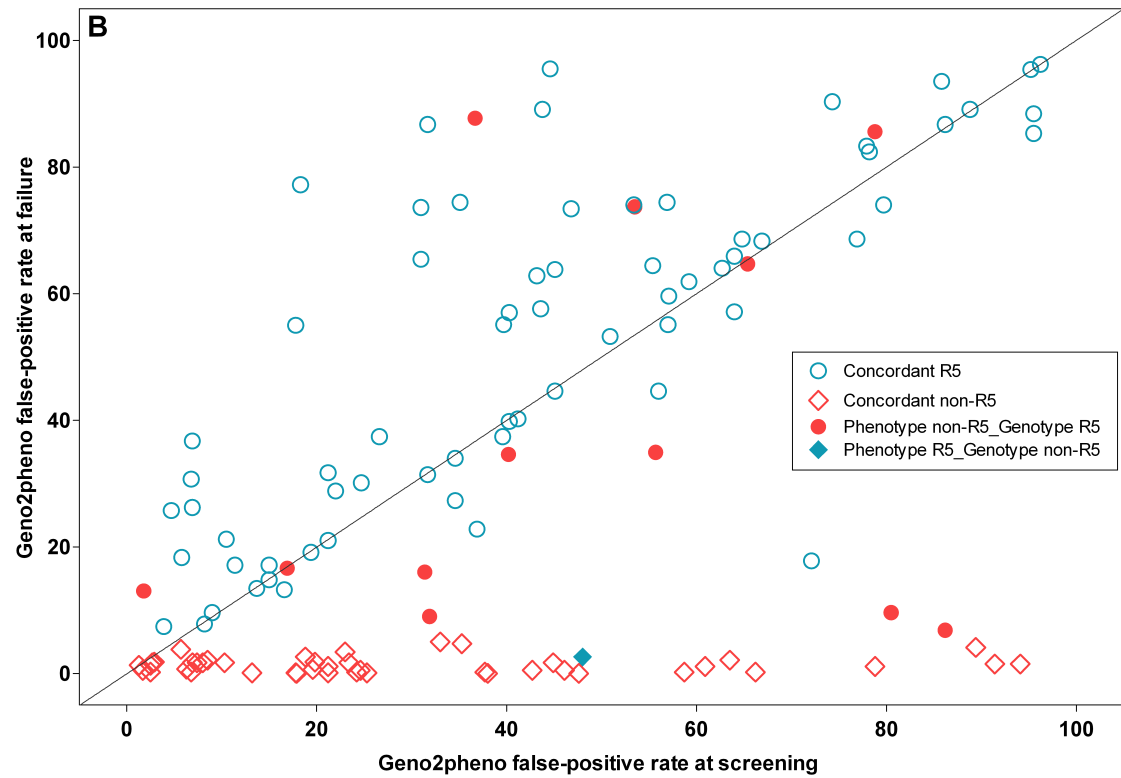
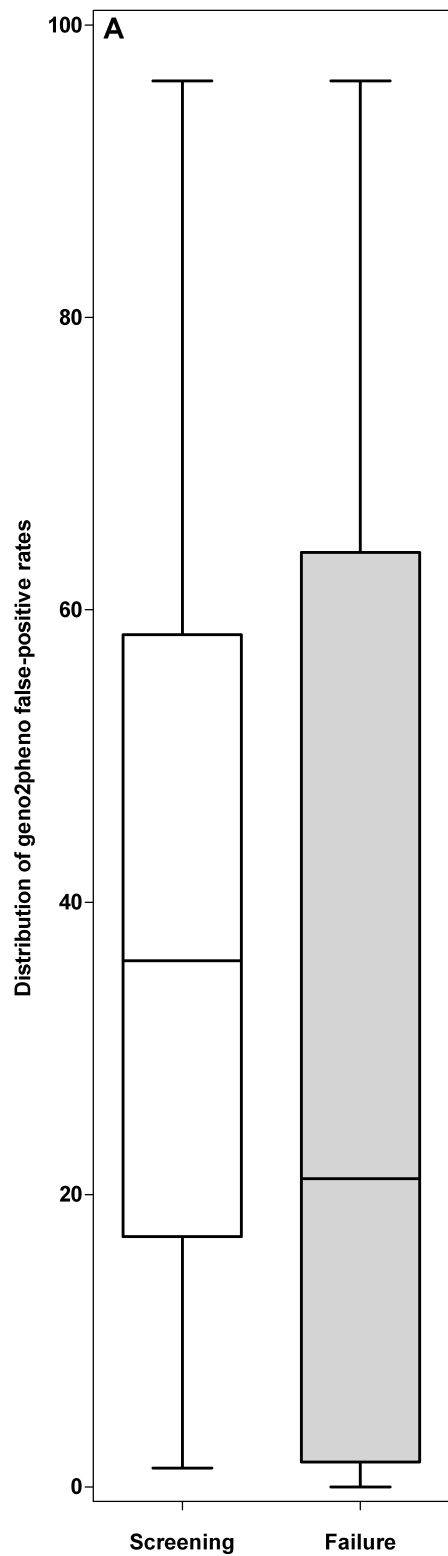


Supplementary Figure 1: Results when patients were restricted to those screened as having R5 HIV by ESTA

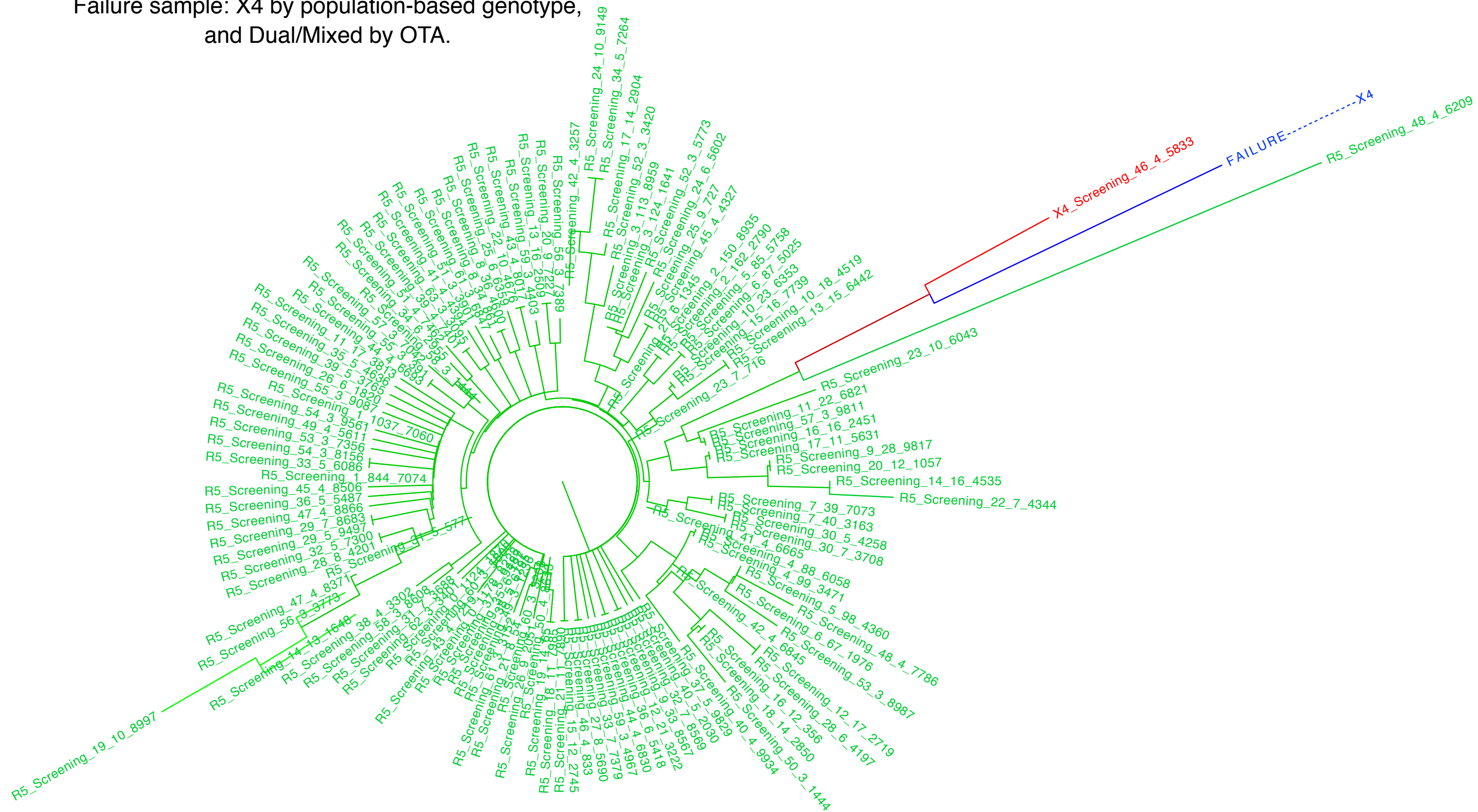


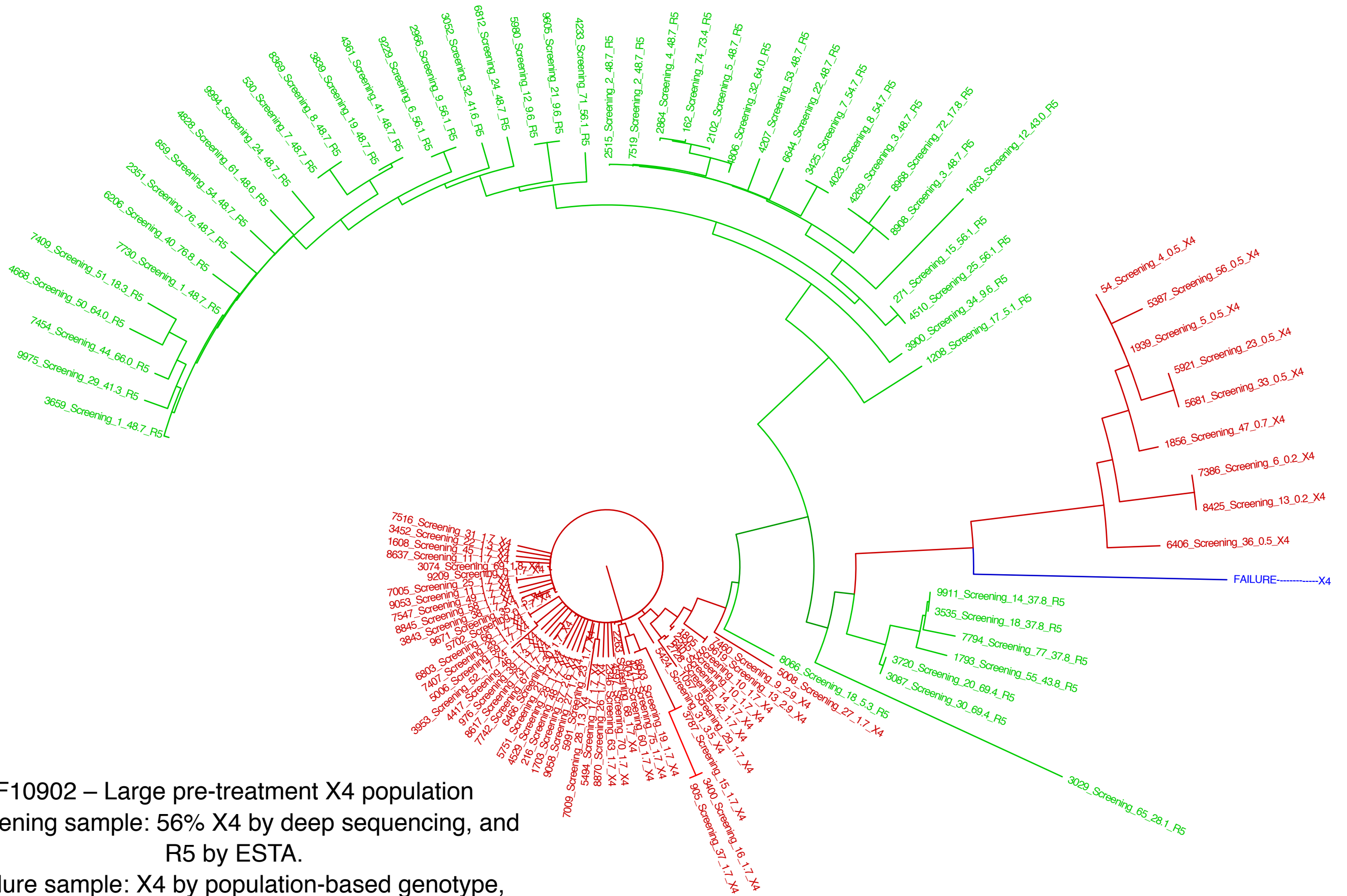
Example trees

F10881 – Small pre-treatment X4 population

Screening sample: 0.1% X4 by deep sequencing, and R5 by ESTA.

Failure sample: X4 by population-based genotype, and Dual/Mixed by OTA.





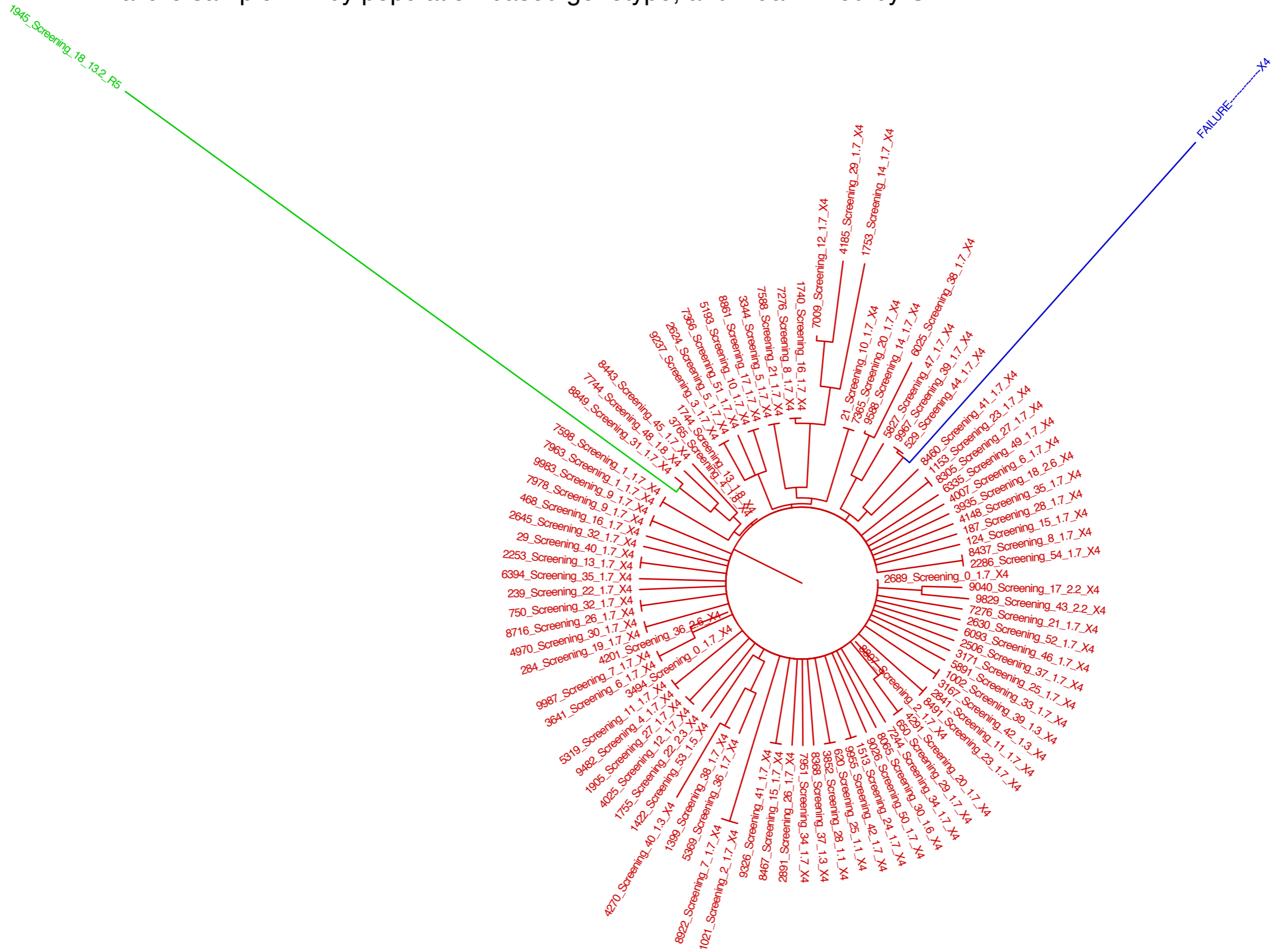
F10902 – Large pre-treatment X4 population
 Screening sample: 56% X4 by deep sequencing, and R5 by ESTA.
 Failure sample: X4 by population-based genotype, and Dual/Mixed by OTA.

0.02

F11263 – Large pre-treatment X4 population

Screening sample: 99.9% X4 by deep sequencing, and Dual/Mixed by ESTA.

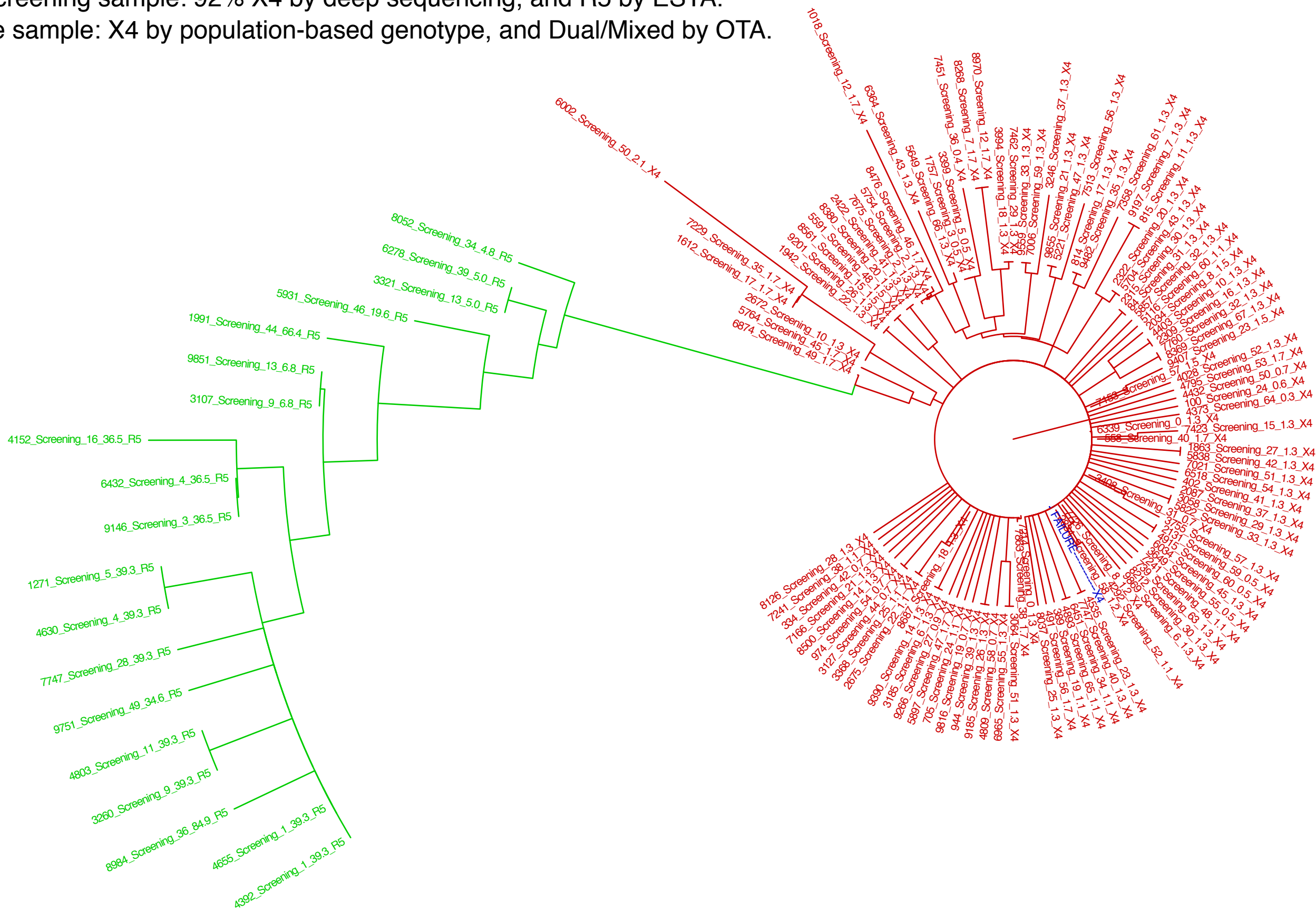
Failure sample: X4 by population-based genotype, and Dual/Mixed by OTA.



F11270 – Large pre-treatment X4 population

Screening sample: 92% X4 by deep sequencing, and R5 by ESTA.

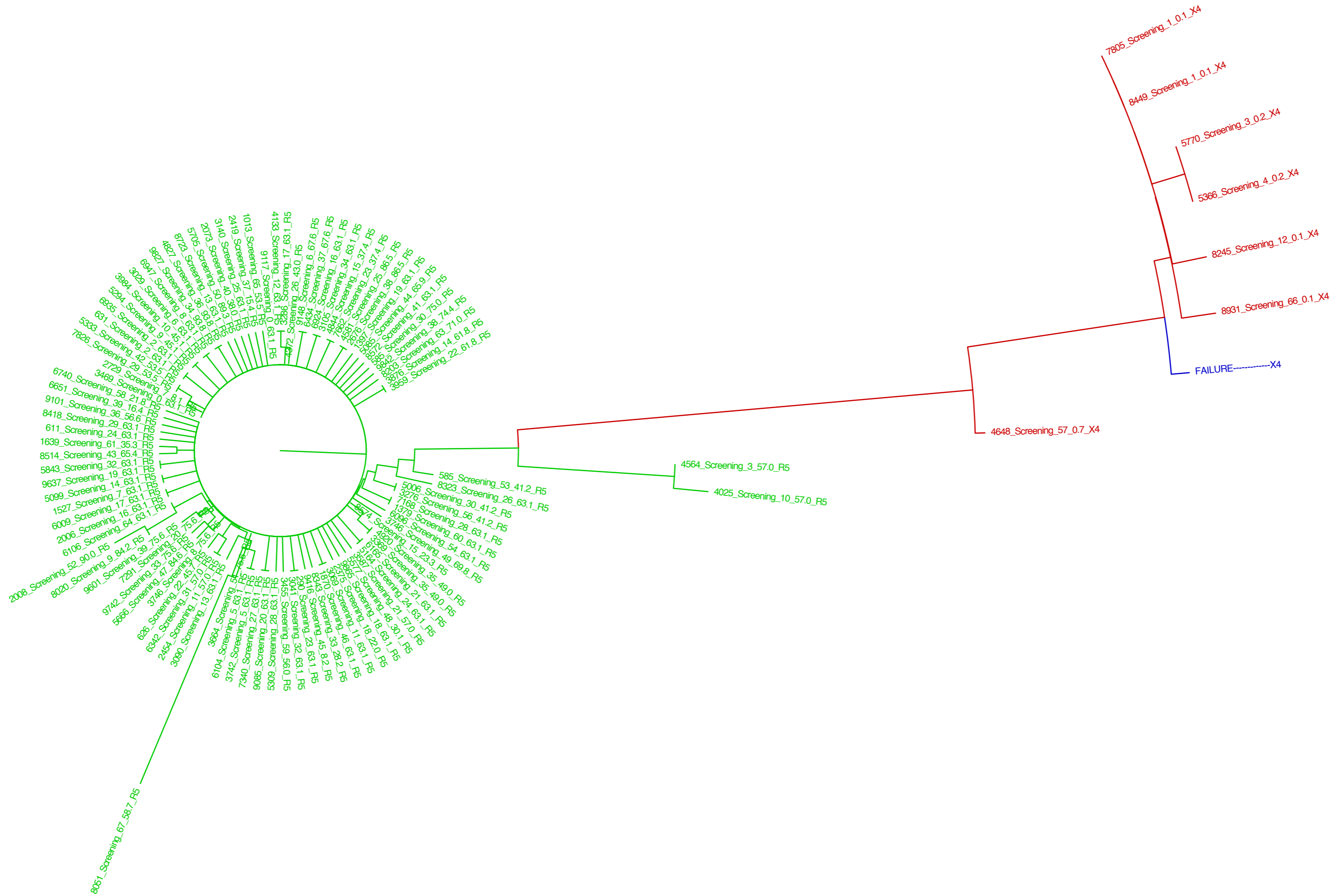
Failure sample: X4 by population-based genotype, and Dual/Mixed by OTA.



F12434 – Small pre-treatment X4 population

Screening sample: 5% X4 by deep sequencing, and Dual/Mixed by ESTA.

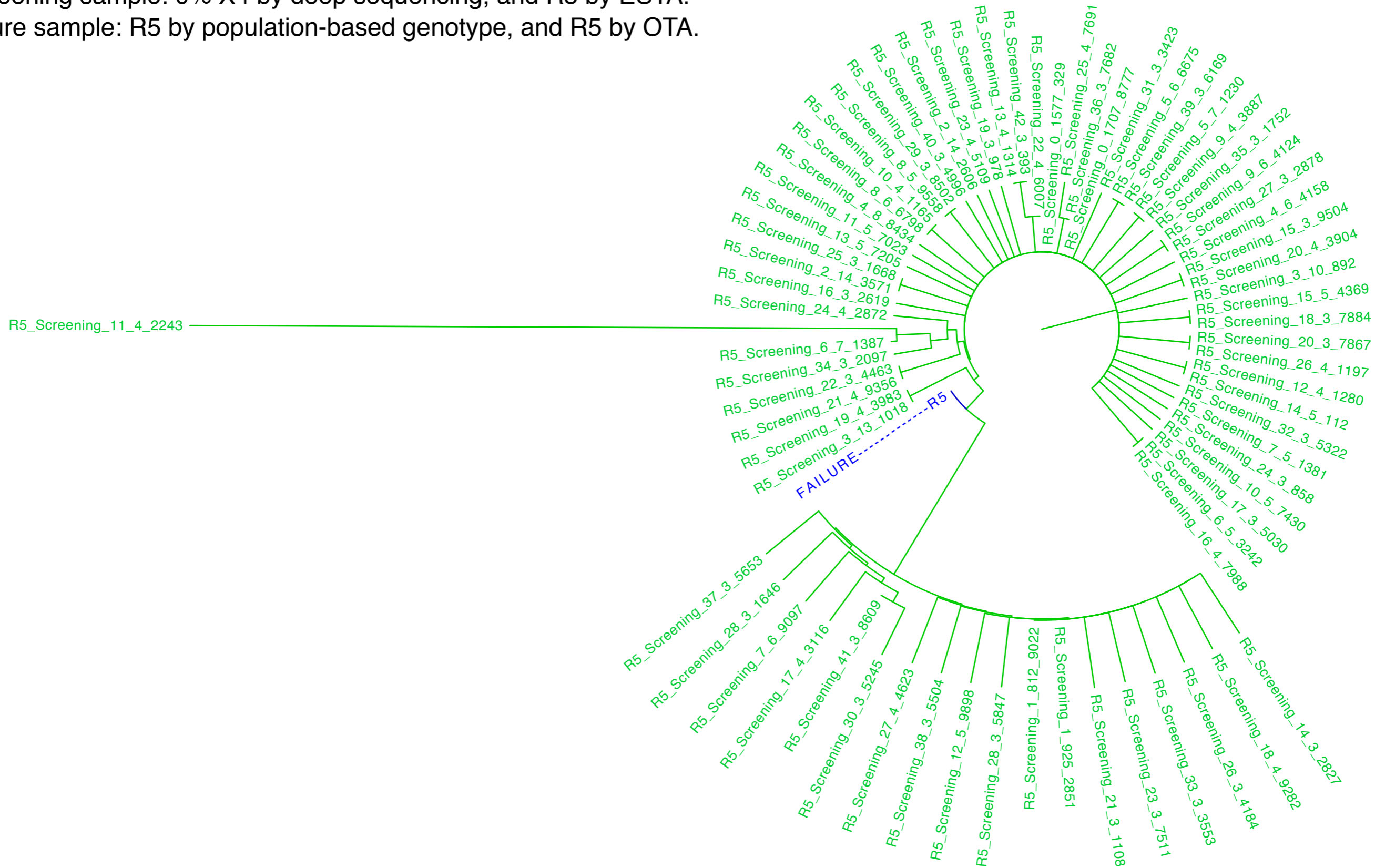
Failure sample: X4 by population-based genotype, and X4 by OTA.



F12468 – R5 failure

Screening sample: 0% X4 by deep sequencing, and R5 by ESTA.

Failure sample: R5 by population-based genotype, and R5 by OTA.



0.02

