

Figure S1

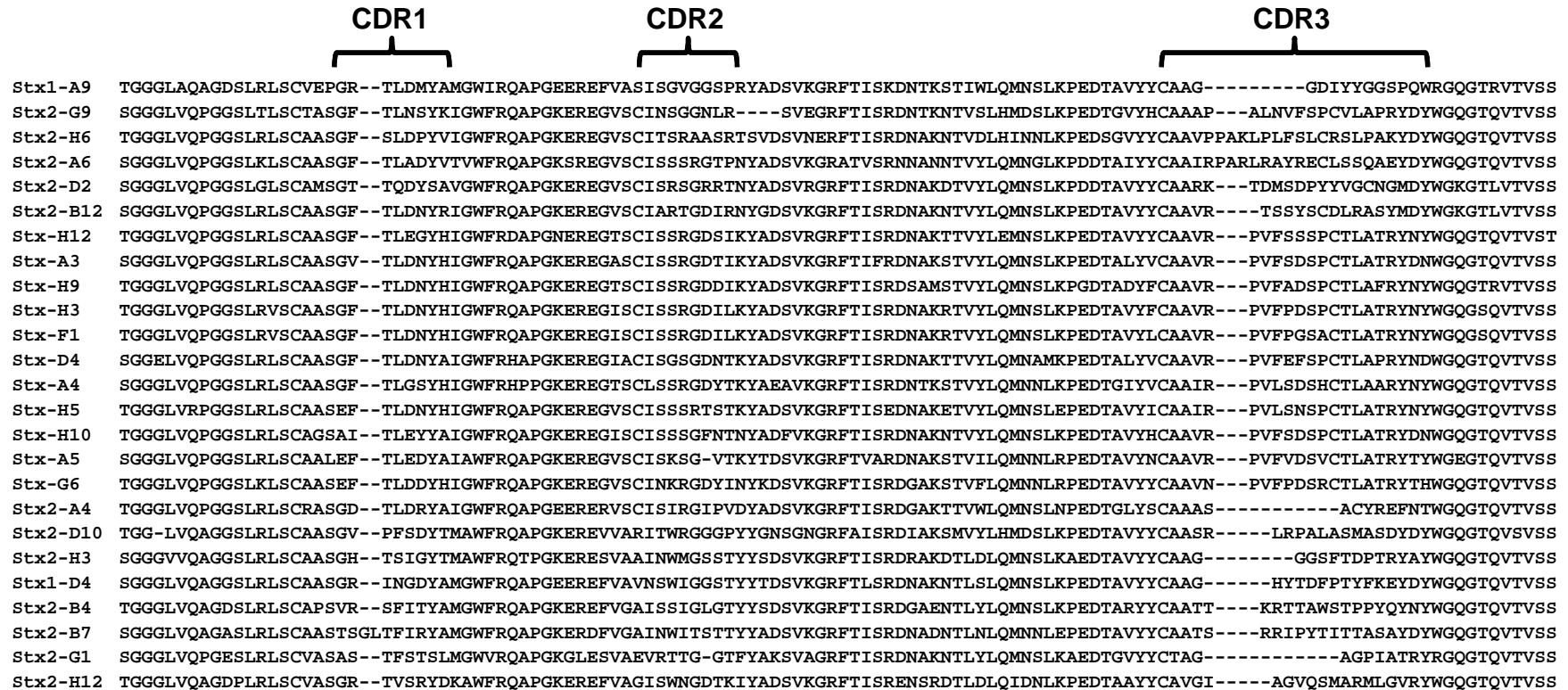


Figure S1. Amino acid sequences of VHHs selected for binding to Stx1 or Stx2. Sequences shown begin within framework 1 at the site of the primer binding employed in coding sequence DNA amplification from the immune alpaca cDNA [34] and continue through the end of framework 4. The parentheses at the end indicate whether the VHH contains a long hinge (lh) or a short hinge (sh). The three complementarity determining regions (CDRs) are indicated at the top.