

Figure S3

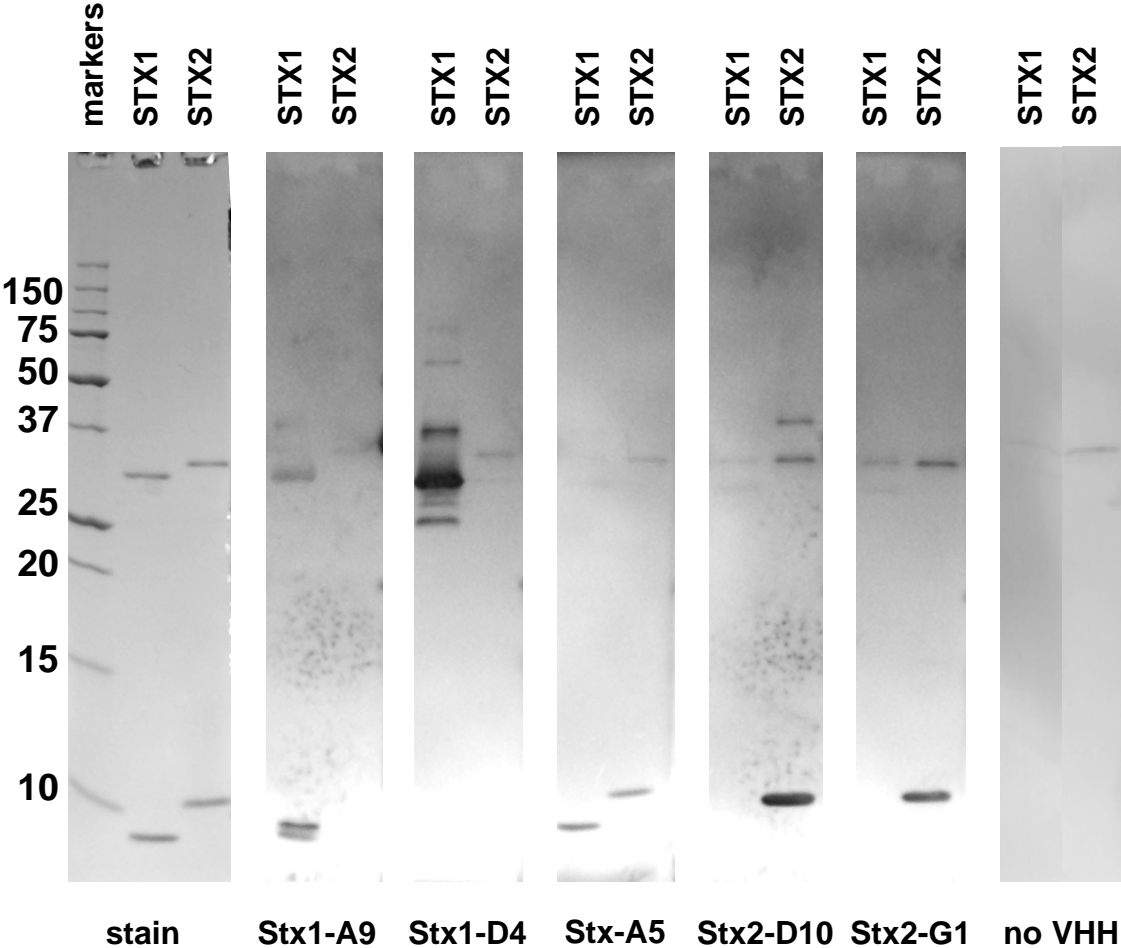


Figure S3. Western blots of VHH binding to Stx1 and Stx2. Purified Stx1 and Stx2 were resolved by SDS-PAGE and the gel stained for protein (stain). MW markers are shown to the left. Similar lanes containing Stx1 and Stx2 were transferred to filters for Western blot. The blots were incubated with 10 µg/ml of the indicated VHHs or control. Bound VHH was visualized with HRP/anti-E-tag.