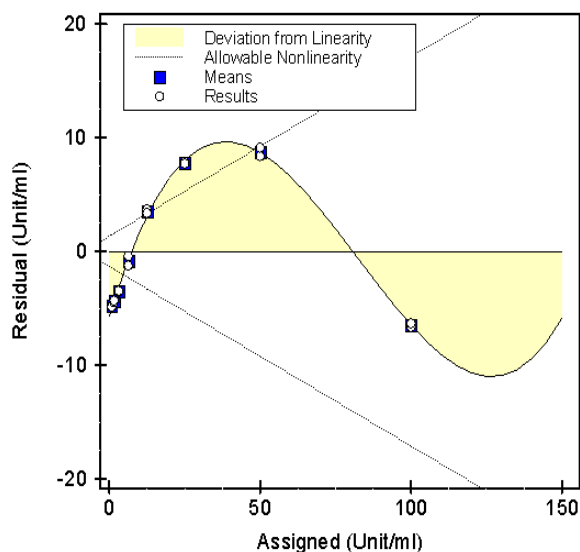
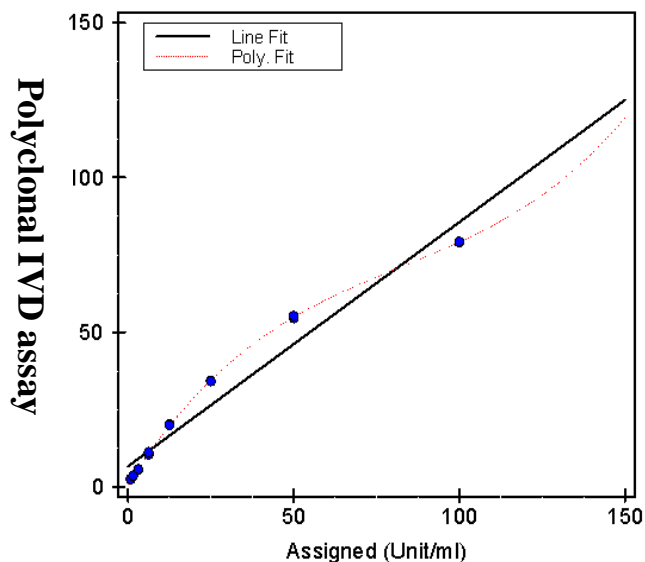
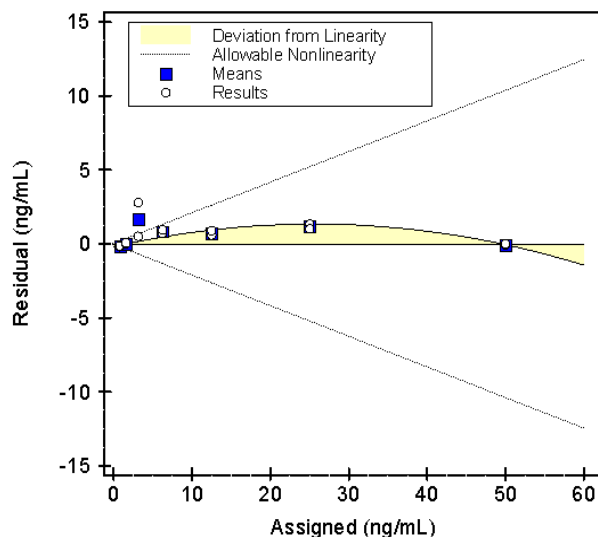
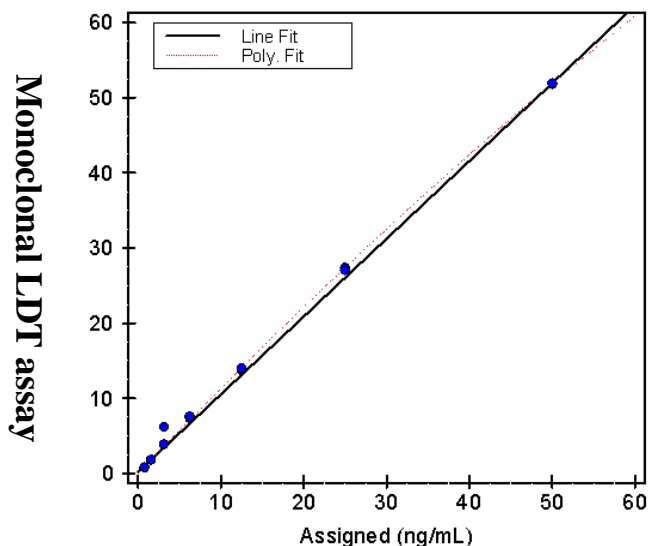


Scatter plot

Residual plot



Supplemental figure 1: Linearity of the monoclonal LDT and polyclonal IVD assays for quantitation of urinary histoplasma antigen. Linearity was evaluated at 7 concentration levels. The monoclonal LDT was linear within the range 0.5 -50 ng/mL. The polyclonal IVD was not linear within the analytical measurement range (2-100U/mL) with allowable nonlinearity of 20%.