

SUPPLEMENTAL MATERIAL

Figure S1

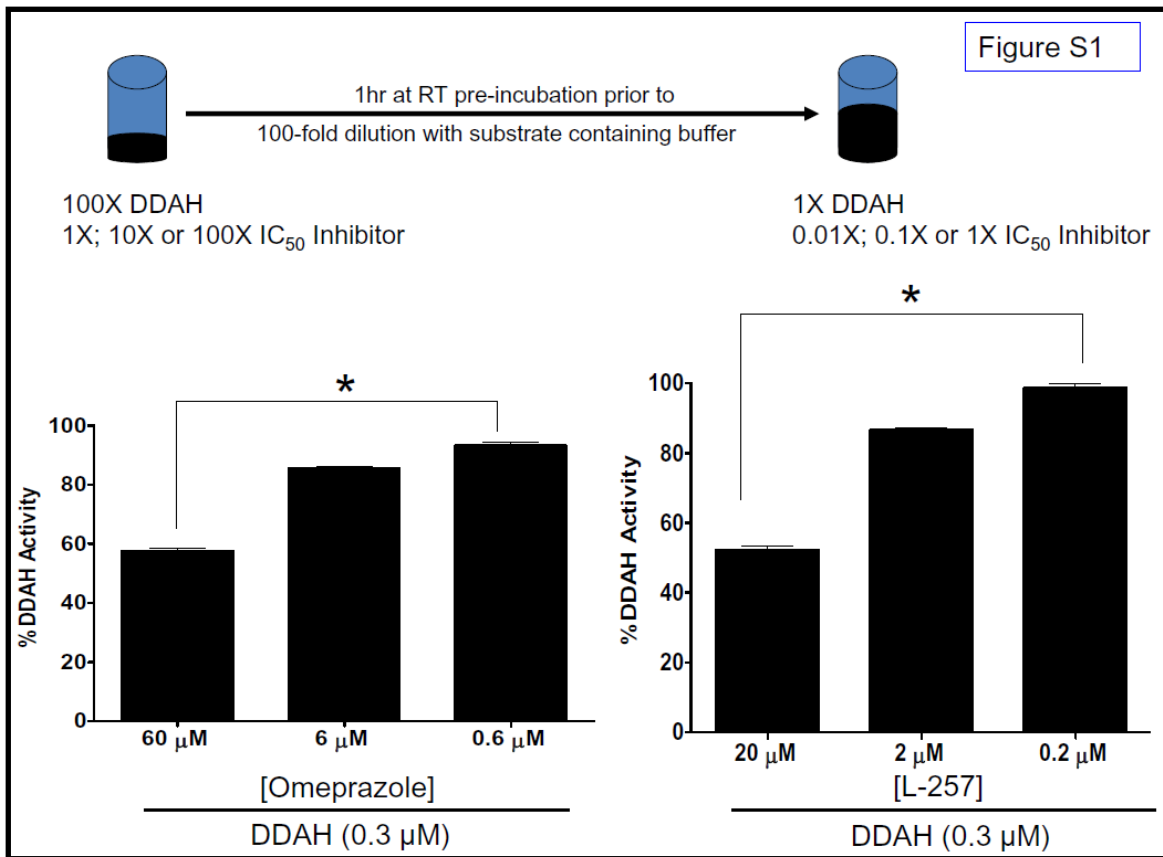
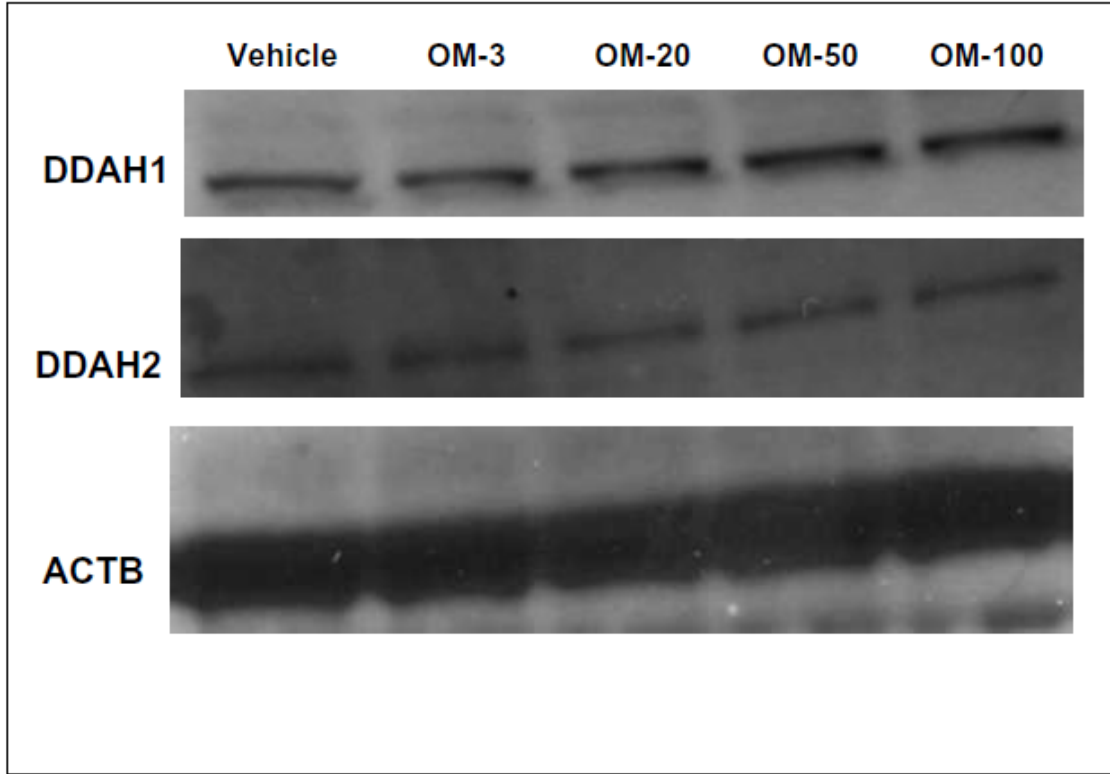


Figure S2



Supplemental Figure Legend:

Figure-S1: Dilution assay demonstrating reversible inhibition of DDAH activity by the PPI omeprazole ($IC_{50} \sim 60 \mu M$). The graph shows recovery of DDAH activity upon dilution of the inhibitor. Data are Mean \pm SEM of quadruplicates at each concentration (* $p < 0.05$).

Figure-S2: PPIs do not regulate endothelial DDAH expression. The influence of PPIs on the expression of endothelial DDAH1 and DDAH2 proteins was studied by Western blot using lysate (20 μg per lane) from endothelial cells exposed to the PPI omeprazole or vehicle. The expression was normalized to β -actin (ACTB).