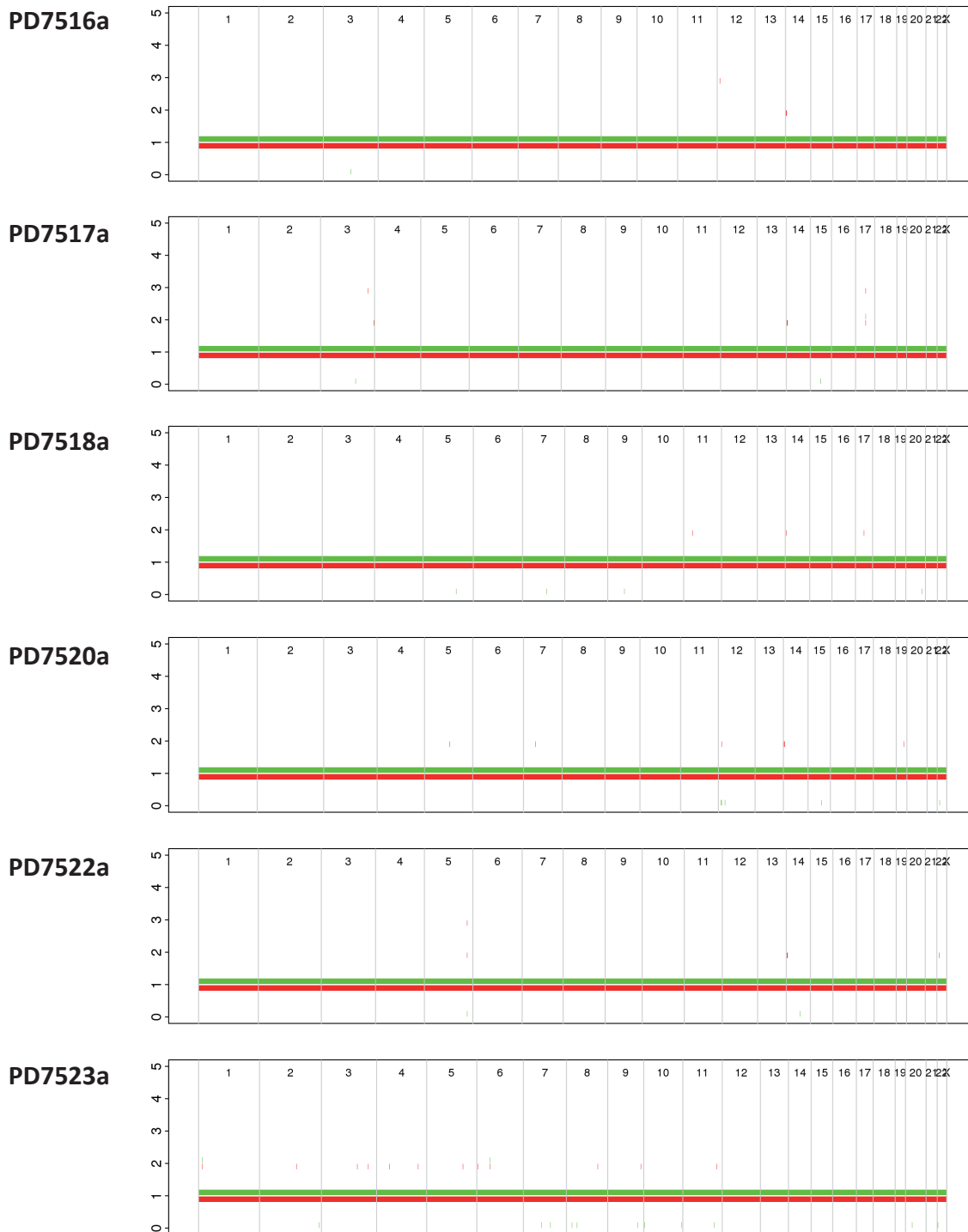


Supplementary Figure 1

Genome-wide copy number changes in 6 chondroblastomas.



The copy number is shown on the y axis. X-axis represent relative genomic positions, in ascending order. Characters in plot area are chromosomes. Red and green lines represent the major and minor allele, respectively.

Supplementary Table 1:

Clinical features of cases included in the whole genome screen and in the extension series, with histone 3.3 mutation status

Case ID	Histone variant	Main histology	Anatomical site	Age at diagnosis	Sex
PD10000a	H3F3A G34W	Giant cell tumour of bone	Femur, left	35	M
PD10002a	H3F3A G34W	Giant cell tumour of bone	Tibia, right	14	F
PD10003a	WT	Giant cell tumour of bone	Tibia, left	30	M
PD10004a	H3F3A G34W	Giant cell tumour of bone	Femur, right	34	F
PD10005a	WT	Giant cell tumour of bone	Patella, left	18	F
PD10076a	WT	Chondromyxoid fibroma	Toe	18	M
PD10077a	WT	Chondromyxoid fibroma	Tibia, left	10	F
PD10078a	WT	Chondromyxoid fibroma	Toe, left	21	M
PD10079a	WT	Chondromyxoid fibroma	Tibia	34	M
PD10080a	WT	Chondromyxoid fibroma	Tibia	23	F
PD10081a	WT	Chondromyxoid fibroma	Femur, left	15	F
PD10083a	WT	Chondromyxoid fibroma	Metatarsal	20	F
PD10084a	WT	Chondromyxoid fibroma	Calcaneus, right	12	M
PD12370a	WT	Osteosarcoma	Femur right distal	12	M
PD12423a	WT	Chondromyxoid fibroma	Metatarsal, left	24	F
PD12431a	WT	Osteosarcoma	Femur left distal	46	F
PD12435a	WT	Osteosarcoma	Right humerus	70	F
PD12445a	WT	Osteosarcoma	Femur left distal	76	F
PD12446a	WT	Osteosarcoma	Fibula left distal	26	F
PD12447a	WT	Osteosarcoma	Femur left	49	M
PD12448a	WT	Osteosarcoma	Tibia left distal	38	F
PD12449a	WT	Osteosarcoma	Humerus right proximal	6	M
PD12453a	WT	Osteosarcoma	Femur right distal	12	M
PD12454a	WT	Osteosarcoma	Fibula right proximal	23	M
PD12455a	WT	Osteosarcoma	Tibia left proximal	17	F
PD12456a	WT	Osteosarcoma	Tibia right	20	F
PD12458a	WT	Osteosarcoma	Humerus	15	F
PD12461a	WT	Osteosarcoma	Femur left	19	F
PD3786a	WT	Osteosarcoma	Humerus right diaphysis	9	M
PD3789a	WT	Osteosarcoma	Femur	62	M
PD3790a	WT	Chondrosarcoma	Humerus	75	M
PD3791a	WT	Osteosarcoma	Fibula	78	M
PD3792a	WT	Osteosarcoma	Femur	56	M
PD3793a	WT	Osteosarcoma	Femur	61	M
PD3794a	WT	Osteosarcoma	Femur right distal	46	F
PD3796a	WT	Osteosarcoma	Femur	14	M
PD3797a	WT	Osteosarcoma	Radius	14	F
PD3799a	WT	Osteosarcoma	Femur	33	F
PD3804a	WT	Chordoma	Mets. Anterior abdominal wall	58	F
PD3806a	WT	Chordoma	Sacrum	43	F
PD3807a	WT	Chordoma	Sacrum	61	M
PD3808a	WT	Chordoma	Sacrum	61	M
PD3812a	WT	Chordoma	Sacrum	67	F
PD3814a	WT	Chordoma	Sacrum	75	F
PD3815a	WT	Chordoma	Sacrum	69	M
PD3819a	WT	Chordoma	Sacrum	58	F
PD3820a	WT	Chordoma	Sacrum	58	M
PD3821a	WT	Chordoma	Sacrum	63	M

PD3862a	WT	Osteosarcoma	Pelvis ilium	19	F
PD4183a	WT	Chordoma	Sacrum	62	M
PD4187a	WT	Chordoma	Sacrum	57	M
PD4188a	WT	Chordoma	Sacrum	67	F
PD4884a	WT	Osteosarcoma	Tibia left	14	F
PD4885a	WT	Osteosarcoma	Pelvis ilium left	69	F
PD4886a	WT	Osteosarcoma	Tibia left distal	24	M
PD4887a	WT	Osteosarcoma	Femur right proximal	60	F
PD4889a	WT	Osteosarcoma	Femur right distal	11	M
PD4890a	WT	Osteosarcoma	Tibia right distal	56	F
PD4891a	WT	Osteosarcoma	Femur left distal	19	F
PD4892a	WT	Osteosarcoma	Tibia left proximal	18	M
PD4893a	WT	Osteosarcoma	Femur right proximal	62	M
PD4894a	WT	Osteosarcoma	Femur right distal	36	M
PD4895a	WT	Osteosarcoma	Femur left distal	24	F
PD4896a	WT	Osteosarcoma	Tibia	60	F
PD4897a	WT	Osteosarcoma	Tibia	13	M
PD4898a	WT	Osteosarcoma	Femur	12	F
PD4900a	WT	Osteosarcoma	Pelvis ilium right	24	F
PD4901a	WT	Osteosarcoma	Femur	13	F
PD4902a	WT	Osteosarcoma	Tibia right proximal	22	M
PD4903a	WT	Osteosarcoma	Femur right proximal	44	M
PD4904a	WT	Osteosarcoma	Femur left distal	15	M
PD4905a	HIST1H3H G12R	Osteosarcoma	Femur right proximal	16	M
PD4906a	WT	Osteosarcoma	Humerus right	66	M
PD4907a	WT	Osteosarcoma	Femur left distal	19	M
PD4908a	WT	Osteosarcoma	Pelvic soft tissue	53	M
PD4909a	WT	Osteosarcoma	Femur right distal	16	M
PD4910a	WT	Osteosarcoma	Femur right distal	8	F
PD4911a	WT	Osteosarcoma	Femur right proximal	39	M
PD4912a	WT	Chondrosarcoma	Femur	72	M
PD4913a	WT	Osteosarcoma	Axilla	80	F
PD4914a	WT	Osteosarcoma	Tibia & foot	47	F
PD4915a	H3F3A G34R	Osteosarcoma (not giant cell)	Femur	47	M
PD4916a	WT	Osteosarcoma	Tibia	45	M
PD4917a	WT	Osteosarcoma	Ilium	69	F
PD4918a	WT	Osteosarcoma	Pelvis ilium	10	M
PD4919a	WT	Osteosarcoma	Tibia left proximal	49	F
PD4920a	WT	Osteosarcoma	Pelvis ilium	46	F
PD4921a	WT	Osteosarcoma	Femur left distal	64	M
PD4922a	H3F3B G34R	Osteosarcoma (not giant cell)	Femur left proximal	37	F
PD4923a	WT	Osteosarcoma	Femur right distal	37	M
PD4924a	WT	Osteosarcoma	Tibia left proximal	12	M
PD4925a	WT	Osteosarcoma	Pelvis ilium	31	M
PD4926a	WT	Chordoma	Sacrum	54	M
PD4927a	WT	Chordoma	Sacrum	65	F
PD4928a	WT	Chordoma	L3	68	M
PD4929a	WT	Chordoma	Clivus	6	M
PD5915a	WT	Osteosarcoma	Femur	54	F
PD5916a	WT	Osteosarcoma	Pelvis ilium	75	M
PD5918a	WT	Osteosarcoma	Humerus left	20	M
PD5919a	WT	Osteosarcoma	Femur right	62	F
PD5920a	WT	Osteosarcoma	Femur left	13	F
PD5921a	WT	Osteosarcoma	Humerus right proximal	15	M
PD5922a	WT	Osteosarcoma	Femur right distal	12	F
PD5924a	WT	Osteosarcoma	Femur left distal	81	M
PD6341a	WT	Chondrosarcoma	Femur	10	F
PD6342a	WT	Chondrosarcoma	Pelvis	73	M

PD6343a	WT	Chondrosarcoma	Foot	72	M
PD6344a	WT	Chondrosarcoma	Tibia	31	M
PD6345a	WT	Chondrosarcoma	Knee	81	M
PD6346a	WT	Chondrosarcoma	Femur	70	M
PD6349a	WT	Chondrosarcoma	Humerus	50	M
PD6350a	WT	Chondrosarcoma	Femur	78	M
PD6351a	WT	Chondrosarcoma	Pelvis	50	M
PD6353a	WT	Chondrosarcoma	Humerus	36	F
PD6354a	WT	Chondrosarcoma	Hand	81	M
PD6355a	WT	Chondrosarcoma	Humerus	49	M
PD6358a	WT	Chondrosarcoma	Femur	68	M
PD6359a	WT	Chondrosarcoma	Pelvis	72	M
PD6360a	WT	Chondrosarcoma	Femur	81	M
PD6361a	WT	Chondrosarcoma	calcaneus	65	M
PD6362a	WT	Chondrosarcoma	Tibia	30	F
PD6363a	WT	Chondrosarcoma	Humerus	71	M
PD6365a	WT	Chondrosarcoma	Pelvis	73	M
PD6366a	WT	Chondrosarcoma	Hand	62	F
PD6367a	WT	Chondrosarcoma	Femur	60	M
PD6370a	WT	Chordoma	Clivus	21	F
PD6744a	WT	Chondrosarcoma	Rib	69	F
PD6745a	WT	Chondrosarcoma	Sternum	44	M
PD6746a	WT	Chondrosarcoma	Pelvis	71	M
PD6747a	WT	Chondrosarcoma	Pelvis	36	F
PD6748a	WT	Chondrosarcoma	Rib	53	F
PD6749a	WT	Chondrosarcoma	Femur	55	M
PD6750a	WT	Chondrosarcoma	Femur	66	M
PD6751a	WT	Chondrosarcoma	Scapula	31	M
PD6752a	WT	Chondrosarcoma	Rib	42	M
PD6753a	WT	Chondrosarcoma	Pelvis	39	M
PD6754a	WT	Chondrosarcoma	Tibia	77	M
PD6755a	WT	Chondrosarcoma	Pelvis	76	M
PD6756a	WT	Chondrosarcoma	Rib	52	M
PD6757a	WT	Chondrosarcoma	Pelvis	53	F
PD6759a	WT	Chondrosarcoma	Pelvis	44	F
PD6760a	WT	Chondrosarcoma	Femur	51	M
PD6761a	WT	Chondrosarcoma	Femur	68	M
PD6762a	WT	Chondrosarcoma	Pelvis	65	F
PD6763a	WT	Chondrosarcoma	Tibia	81	F
PD6765a	WT	Chondrosarcoma	Sternum	66	M
PD6767a	WT	Chondrosarcoma	Foot	26	M
PD7054a	WT	Chondrosarcoma	Scapula	66	M
PD7055a	WT	Osteosarcoma	Femur left proximal	47	F
PD7061a	WT	Chondrosarcoma	Femur	44	M
PD7062a	WT	Chordoma	Sacrum	49	F
PD7063a	WT	Chordoma	Sacrum	65	F
PD7183a	WT	Chordoma	Coccyx	52	M
PD7184a	WT	Chordoma	Sacrum	64	M
PD7185a	WT	Chordoma	Sacrum	75	F
PD7186a	WT	Chordoma	ST Pelvis	56	M
PD7187a	WT	Chordoma	Sacrum	67	M
PD7193a	WT	Osteosarcoma	Femur distal	10	M
PD7194a	WT	Osteosarcoma	Femur distal	21	F
PD7195a	WT	Osteosarcoma	Maxilofacial	28	M
PD7196a	WT	Osteosarcoma	Femur Distal	19	M
PD7197a	WT	Osteosarcoma	Femur	11	F
PD7299a	WT	Chondrosarcoma	Femur	43	M
PD7300a	WT	Chondrosarcoma	Humerus	53	M

PD7301a	WT	Chondrosarcoma	Pelvis	27	M
PD7302a	WT	Chondrosarcoma	Femur	41	M
PD7303a	WT	Chondrosarcoma	Foot	22	F
PD7401a	WT	Osteosarcoma	Femur right distal	36	F
PD7507a	WT	Osteosarcoma	Femur distal	46	F
PD7508a	WT	Osteosarcoma	Femur Distal	34	F
PD7509a	WT	Osteosarcoma	Fibula proximal	22	M
PD7510a	WT	Osteosarcoma	Retroperitoneal	23	F
PD7511a	WT	Osteosarcoma	Femur distal	83	M
PD7512a	WT	Osteosarcoma	Tibia proximal	20	M
PD7513a	WT	Osteosarcoma	Femur distal	11	F
PD7516a	H3F3B K36M	Chondroblastoma	Femur, left	16	M
PD7517a	H3F3B K36M	Chondroblastoma	Humerus, left	13	M
PD7518a	H3F3A K36M	Chondroblastoma	humerus, left	20	M
PD7520a	H3F3B K36M	Chondroblastoma	Humerus, right	11	M
PD7522a	H3F3B K36M	Chondroblastoma	Femur, left	16	M
PD7523a	H3F3B K36M	Chondroblastoma	Tibia, left	14	M
PD7526a	WT	Chondromyxoid fibroma	Tibia, left	21	F
PD9034a	WT	Chondrosarcoma	First finger	55	M
PD9035a	WT	Chondrosarcoma	Foot	27	F
PD9036a	WT	Chondrosarcoma	Femur	59	F
PD9037a	WT	Chondrosarcoma	Ilium	35	F
PD9038a	WT	Chondrosarcoma	Tibia	25	F
PD9039a	WT	Chondrosarcoma	fibula	51	F
PD9040a	H3F3A K36M	Chondrosarcoma (not giant)	Femur	72	F
PD9041a	WT	Chondrosarcoma	Humerus	59	M
PD9042a	WT	Chondrosarcoma	Scapula	55	M
PD9044a	WT	Chondrosarcoma	Femur	53	M
PD9045a	WT	Chondrosarcoma	Rib	53	M
PD9048a	WT	Chondrosarcoma	Rib	73	M
PD9049a	WT	Clear cell chondrosarcoma	Vertebra	50	M
PD9050a	WT	Chondrosarcoma	Pelvis	33	M
PD9051a	WT	Chondrosarcoma	Femur	59	M
PD9052a	WT	Osteosarcoma	Fibula right proximal	21	M
PD9053a	WT	Osteosarcoma	Humerus right proximal	18	M
PD9054a	WT	Osteosarcoma	Femur	12	M
PD9055a	WT	Osteosarcoma	Femur right	22	M
PD9072a	WT	Soft tissue chondroma	Foot	61	F
PD9083a	WT	Soft tissue chondroma	Hand	23	M
PD9092a	WT	Soft tissue chondroma	Heel	19	M
PD9094a	WT	Soft tissue chondroma	Foot	46	F
PD9099a	WT	Synovial chondroma	Knee	48	M
PD9104a	WT	Clear cell chondrosarcoma	Humerus	50	M
PD9105a	WT	Soft tissue chondroma	Foot	45	F
PD9109a	WT	Synovial chondroma	Knee	42	M
PD9115a	WT	Chondrosarcoma	Scapula	44	M
PD9388a	WT	Chondrosarcoma	Hand	54	M
PD9390a	WT	Chondrosarcoma	Sacrum	58	F
PD9391a	WT	Chondrosarcoma	Pelvis	52	M
PD9392a	H3F3B K36M	Chondroblastoma	Humerus, left	17	M
PD9393a	WT	Chondrosarcoma	Foot	30	F
PD9394a	WT	Chondrosarcoma	Femur	51	F
PD9396a	H3F3B K36M	Chondroblastoma	Femur, left	35	M
PD9397a	H3F3B K36M	Chondroblastoma	Femur, left	9	M
PD9400a	WT	Chondrosarcoma	Femur	65	M
PD9610a	WT	Chondrosarcoma	Fifth toe	47	F
PD9611a	WT	Chondrosarcoma	Hand	28	M
PD9616a	WT	Chondrosarcoma	Pelvis	59	M

PD9967a	WT	Osteosarcoma	Tibia right proximal	41	F
PD9968a	WT	Osteosarcoma	Femur	17	F
PD9970a	WT	Osteosarcoma	Humerus	14	M
PD9971a	WT	Osteosarcoma	Femur	19	M
PD9973a	WT	Osteosarcoma	Femur right distal	17	M
PD9974a	WT	Osteosarcoma	Tibia	44	F
PD9978a	WT	Osteosarcoma	Femur right distal	17	M
PD9980a	WT	Osteosarcoma	Femur	5	F
PD9981a	WT	Osteosarcoma	Tibia left proximal	12	F
PD9983a	WT	Osteosarcoma	Fibula right proximal	14	F
PD9984a	WT	Osteosarcoma	Femur	13	M
PD9985a	WT	Osteosarcoma	Tibia right proximal	12	M
PD9986a	WT	Osteosarcoma	Femur	72	M
PD9989a	WT	Osteosarcoma	Femur right distal	12	F
PD9990a	H3F3A G34W	Giant cell tumour of bone	Humerus, right	43	M
PD9991a	H3F3A G34W	Giant cell tumour of bone	Tibia, right	33	F
PD9992a	H3F3A G34W	Giant cell tumour of bone	Tibia	30	F
PD9993a	H3F3A G34W	Giant cell tumour of bone	Fibula, left	21	F
PD9995a	H3F3A G34W	Giant cell tumour of bone	Femur, right	31	F
PD9996a	H3F3A G34L	Giant cell tumour of bone	Femur, right	29	F
PD9997a	WT	Giant cell tumour of bone	SB, Finger, left index	40	M
PD9998a	H3F3A G34W	Giant cell tumour of bone	SB, thumb, left	50	M
PD9999a	H3F3A G34W	Giant cell tumour of bone	Rib	10	F
S00010551	WT	Chondromyxoid fibroma	Finger, right middle	36	M
S00010552	WT	Chondromyxoid fibroma	Femur, left	13	F
S00010553	WT	Chondromyxoid fibroma	Tibia	20	M
S00010554	WT	Chondromyxoid fibroma	Tibia, left	8	F
S00010555	WT	Chondromyxoid fibroma	Femur, left	12	F
S00010556	WT	Chondromyxoid fibroma	Pubic ramus, right	44	F
S00010557	WT	Chondromyxoid fibroma	Ilium, left	30	F
S00010558	WT	Chondromyxoid fibroma	Metatarsal, right foot	34	F
S00010560	WT	Chondromyxoid fibroma	Toe, right	13	F
S00010561	WT	Chondromyxoid fibroma	Ilium, left	57	F
S00010562	WT	Chondromyxoid fibroma	Metatarsal, right foot	29	M
S00010563	WT	Chondromyxoid fibroma	Femur, right	26	M
S00010564	WT	Chondromyxoid fibroma	Calcaneus, right	27	M
S00010566	WT	Chondromyxoid fibroma	Tibia	57	M
S00010567	WT	Chondromyxoid fibroma	Tibia, left	15	F
S00010569	WT	Chondromyxoid fibroma	Metatarsal, left	50	M
S00010570	WT	Chondromyxoid fibroma	Tibia, left	13	F
S00010571	WT	Chondromyxoid fibroma	Ilium, left	54	F
S00010602	H3F3B K36M	Chondroblastoma	Acromion, left	28	M
S00010611	H3F3B K36M	Chondroblastoma	Tibia, left	16	M
S00010620	H3F3B K36M	Chondroblastoma	Femur, left	11	F
S00010626	H3F3A K36M	Chondroblastoma	Femur, right	28	M
S00010629	H3F3B K36M	Chondroblastoma	Humerus, right	14	F
S00010632	H3F3A K36M	Chondroblastoma	Talus, left	29	F
S00010635	H3F3B K36M	Chondroblastoma	Humerus, right	23	M
S00010638	H3F3B K36M	Chondroblastoma	Humerus, left	49	M
S00010641	H3F3B K36M	Chondroblastoma	Glenoid lesion	28	F
S00010644	H3F3B K36M	Chondroblastoma	Tibia, left	18	M
S00010647	H3F3B K36M	Chondroblastoma	Femur	12	F
S00010650	H3F3B K36M	Chondroblastoma	Tibia, right	16	M
S00010653	H3F3B K36M	Chondroblastoma	Tibia, right	16	M
S00010656	H3F3B K36M	Chondroblastoma	Calcaneus, left	25	M
S00010659	H3F3B K36M	Chondroblastoma	Hip, left	15	M
S00010662	H3F3B K36M	Chondroblastoma	Femur, right	16	M
S00010700	H3F3B K36M	Chondroblastoma	Humerus, right	16	F

S00010705	H3F3B K36M	Chondroblastoma	Femur, left	15	M
S00010708	H3F3B K36M	Chondroblastoma	Humerus, right	15	F
S00010711	H3F3B K36M	Chondroblastoma	Femur, left	15	M
S00010714	H3F3B K36M	Chondroblastoma	Humerus, right	14	M
S00010717	H3F3B K36M	Chondroblastoma	Tibia, right	16	M
S00010723	H3F3B K36M	Chondroblastoma	Humerus, right	13	F
S00018760	H3F3A G34W	Giant cell tumour of bone	Fibula, right	30	F
S00018761	H3F3A G34W	Giant cell tumour of bone	Tibia, right	21	F
S00018762	H3F3A G34W	Giant cell tumour of bone	Femur, left	49	M
S00018764	H3F3A G34W	Giant cell tumour of bone	Tibia	25	M
S00025249	WT	Chondromyxoid fibroma	Tibia, left	26	M
S00025265	WT	Chondromyxoid fibroma	Tibia	15	F
S00036866	H3F3A G34W	Giant cell tumour of bone	Radius	70	F
S00032539	WT	Chondromyxoid fibroma	Tibia	12	F
S00032541	WT	Chondromyxoid fibroma	Olecranon, left	42	F
S00032543	H3F3B K36M	Chondroblastoma	Humerus, right	15	M
S00032547	H3F3A G34W	Giant cell tumour of bone	Pelvis, left	48	M
S00032549	H3F3B K36M	Chondroblastoma	Tibia, right	17	M
S00032551	H3F3B K36M	Chondroblastoma	Tibia, right	15	F
S00032553	H3F3B K36M	Chondroblastoma	Humerus, right	14	F
S00032555	H3F3B K36M	Chondroblastoma	Humerus	14	F
S00032571	H3F3B K36M	Chondroblastoma	Ankle	35	F
S00032573	H3F3B K36M	Chondroblastoma	Femur	17	M
S00032575	H3F3B K36M	Chondroblastoma	Fibula	15	M
S00032577	H3F3B K36M	Chondroblastoma	Femur	15	M
S00032579	H3F3B K36M	Chondroblastoma	Femur	15	M
S00032581	H3F3B K36M	Chondroblastoma	Scapula	26	M
S00032734	WT	Chondromyxoid fibroma	Pubic ramus, right	44	F
S00032738	H3F3B K36M	Chondroblastoma	Tibia, right	15	F
S00032740	H3F3B K36M	Chondroblastoma	Femur, left	18	M
S00032742	WT	Chondroblastoma	Sacrum	13	M
S00032746	H3F3B K36M	Chondroblastoma	Patella, right	19	M
S00032748	H3F3B K36M	Chondroblastoma	Femur, right	27	M
S00032750	WT	Chondroblastoma	Calcaneus, right	23	M
S00032752	H3F3B K36M	Chondroblastoma	Femur	23	M
S00032754	H3F3B K36M	Chondroblastoma	Talus	26	M
S00032756	H3F3B K36M	Chondroblastoma	Humerus, left	20	F
S00032758	H3F3A K36M	Chondroblastoma	Femur, left	17	M
S00032760	H3F3B K36M	Chondroblastoma	Calcaneus, right	19	M
S00032809	H3F3B K36M	Chondroblastoma	Humerus, right	19	M
S00032818	H3F3B K36M	Chondroblastoma	Femur	16	M
S00032826	WT	Chondromyxoid fibroma	Knee, right	20	M
S00032832	H3F3B K36M	Chondroblastoma	Femur, right	14	F
S00032949	H3F3B K36M	Chondroblastoma	Humerus	13	M
S00032959	H3F3B K36M	Chondroblastoma	Femur	16	F
S00032961	H3F3B K36M	Chondroblastoma	Femur	16	M
S00032967	H3F3B K36M	Chondroblastoma	Tibia, right	12	F
S00032971	H3F3B K36M	Chondroblastoma	Humerus, left	15	F
S00032977	WT	Chondromyxoid fibroma	Proximal phalangeal bone of the	11	M
S00032979	H3F3B K36M	Chondroblastoma	Femur	17	M
S00032981	H3F3B K36M	Chondroblastoma	Femur	21	M
S00032983	WT	Chondromyxoid fibroma	Foot	13	M
S00032985	H3F3A K36M	Chondroblastoma	Tibia	16	M
S00032990	WT	Chondroblastoma	Femur	15	M
S00032993	H3F3B K36M	Chondroblastoma	Vertebra	34	M
S00032995	H3F3B K36M	Chondroblastoma	Calcaneus	15	M
S00032997	H3F3B K36M	Chondroblastoma	Tibia	14	M
S00032999	WT	Clear cell chondrosarcoma	Femur	16	M

S00033001	H3F3B K36M	Chondroblastoma	Humerus	14	M
S00033003	H3F3B K36M	Chondroblastoma	Humerus	16	F
S00033005	WT	Chondromyxoid fibroma	Hand	22	M
S00033007	WT	Chondromyxoid fibroma	Hand	11	F
S00033009	WT	Chondromyxoid fibroma	Femur	20	M
S00033011	WT	Clear cell chondrosarcoma	Femur	51	F
S00033014	WT	Clear cell chondrosarcoma	Femur	50	F
S00033016	WT	Clear cell chondrosarcoma	Femur	19	M
S00033017	WT	Clear cell chondrosarcoma	Hip	35	M
S00033018	WT	Clear cell chondrosarcoma	Femur	38	M
S00033019	WT	Clear cell chondrosarcoma	Femur	32	M
S00033020	WT	Clear cell chondrosarcoma	Femur	31	M
S00033021	H3F3B K36M	Chondroblastoma	Talus	19	F
S00033023	H3F3B K36M	Chondroblastoma	Femur	21	M
S00033029	H3F3B K36M	Chondroblastoma	Femur	20	M
S00033031	WT	Chondroblastoma	Tibia	29	M
S00033033	WT	Chondromyxoid fibroma	Foot	21	F
S00033035	WT	Chondromyxoid fibroma	Ulna	57	F
S00033045	WT	Clear cell chondrosarcoma	Femur	53	M
S00033047	WT	Clear cell chondrosarcoma	Tibia	21	M
S00033050	WT	Chondromyxoid fibroma	Humerus	26	M
S00033053	H3F3B K36M	Clear cell chondrosarcoma	Rib	38	F
S00033059	H3F3A G34W	Giant cell tumour of bone	Femur	24	F
S00033062	H3F3A G34W	Giant cell tumour of bone	Radius, left	30	M
S00033065	H3F3A G34W	Giant cell tumour of bone	Radius, right	29	F
S00033071	H3F3A G34W	Giant cell tumour of bone	Radius, right	40	F
S00033074	H3F3A G34W	Giant cell tumour of bone	Femur, right	39	F
S00033077	H3F3A G34W	Giant cell tumour of bone	Femur, left	29	M
S00033079	WT	Clear cell chondrosarcoma	Femur	45	M
S00033087	H3F3A G34W	Giant cell tumour of bone	Femur, left	42	F
S00033090	H3F3A G34W	Giant cell tumour of bone	Femur, left	28	F
S00033100	H3F3A G34W	Giant cell tumour of bone	Humerus, right	29	F
S00033105	H3F3A G34W	Giant cell tumour of bone	Femur, right	24	M
S00033114	H3F3A G34W	Giant cell tumour of bone	Femur, left	52	M
S00033116	WT	Clear cell chondrosarcoma	Rib	64	M
S00033126	H3F3A G34W	Giant cell tumour of bone	Femur, right	50	M
S00033131	H3F3A G34W	Giant cell tumour of bone	Radius, left	46	M
S00033136	H3F3A G34W	Giant cell tumour of bone	Radius, right	14	F
S00033141	H3F3A G34W	Giant cell tumour of bone	Femur, right	65	M
S00033146	H3F3A G34W	Giant cell tumour of bone	Radius, left	30	M
S00033151	H3F3A G34W	Giant cell tumour of bone	Ischium, left	60	M
S00033154	H3F3A G34W	Giant cell tumour of bone	Humerus	37	F
S00033157	H3F3A G34W	Giant cell tumour of bone	Radius, left	24	M
S00033160	H3F3A G34W	Giant cell tumour of bone	Ulna, left	30	F
S00033163	H3F3A G34W	Giant cell tumour of bone	Pelvis, right	52	M
S00033172	H3F3A G34W	Giant cell tumour of bone	Femur, left	33	M
S00033175	H3F3A G34W	Giant cell tumour of bone	Femur, left	38	M
S00033178	H3F3A G34W	Giant cell tumour of bone	Humerus, left	31	M
S00033181	H3F3A G34W	Giant cell tumour of bone	Femur	30	F
S00033184	H3F3A G34W	Giant cell tumour of bone	Tibia, left	42	M
S00033187	H3F3A G34W	Giant cell tumour of bone	Femur, right	28	F
S00033196	H3F3A G34W	Giant cell tumour of bone	Humerus, right	62	F
S00033243	H3F3A G34W	Giant cell tumour of bone	Femur, left	49	M
S00033262	H3F3A G34W	Giant cell tumour of bone	Fibula, right	30	F
S00033285	H3F3A G34W	Giant cell tumour of bone	Tibia, right	21	F
S00033288	WT	Giant cell tumour of bone	Tibia	25	M
S00033295	H3F3A G34W	Giant cell tumour of bone	Tibia, left	50	M
S00034558	WT	Chondromyxoid fibroma	Tibia	15	F

S00035134	H3F3B K36M	Chondroblastoma	Patella, Left	16	M
S00036864	H3F3B K36M	Chondroblastoma	Femur	20	M

Supplementary Table 2. Substitutions and indels identified in 6 chondroblastoma genomes

NB: The annotation of H3F3A and H3F3B (and all other genes) in this table is per genomic convention and includes the start codon of each protein. In the remainder of this report, the start codon of histone 3.3 mutations was discounted in the annotation in keeping with previous reports of histone 3.3 mutations.

Sample	Variant class	Chrom	Start coordinate (bp)	Stop coordinate (bp)	Gene	Transcript	cDNA	Protein	Mutation consequence	WT base	Mut base
PD7516a	Substitution	1	2820668	2820668	-	-	-	-	-	G	A
PD7516a	Substitution	1	7596788	7596788	CAMTA1	CCDS30576.1	Intronic	-	-	C	T
PD7516a	Substitution	1	11106656	11106656	MASP2	CCDS123.1	c.369C>T	p.N123N	Silent	G	A
PD7516a	Substitution	1	14316036	14316036	C1orf196	ENST00000412667	Intronic	-	-	G	T
PD7516a	Substitution	1	18145840	18145840	ACTL8	CCDS183.1	Intronic	-	-	G	A
PD7516a	Substitution	1	41116766	41116766	RIMS3	CCDS30687.1	Intronic	-	-	C	T
PD7516a	Substitution	1	45421354	45421354	EIF2B3	CCDS517.1	Intronic	-	-	C	T
PD7516a	Substitution	1	56732850	56732850	-	-	-	-	-	G	A
PD7516a	Substitution	1	56781391	56781391	-	-	-	-	-	T	C
PD7516a	Substitution	1	56894432	56894432	-	-	-	-	-	C	G
PD7516a	Substitution	1	57448318	57448318	-	-	-	-	-	C	A
PD7516a	Substitution	1	68527695	68527695	-	-	-	-	-	A	G
PD7516a	Substitution	1	73586378	73586378	-	-	-	-	-	C	A
PD7516a	Substitution	1	88686472	88686472	-	-	-	-	-	C	G
PD7516a	Substitution	1	90987281	90987281	-	-	-	-	-	G	A
PD7516a	Substitution	1	96142955	96142955	-	-	-	-	-	G	T
PD7516a	Substitution	1	97020952	97020952	-	-	-	-	-	C	T
PD7516a	Substitution	1	97919945	97919945	DPYD	CCDS30777.1	Intronic	-	-	A	G
PD7516a	Substitution	1	98049014	98049014	DPYD	CCDS30777.1	Intronic	-	-	G	C
PD7516a	Substitution	1	104688066	104688066	-	-	-	-	-	G	A
PD7516a	Substitution	1	115328895	115328895	-	-	-	-	-	C	A
PD7516a	Substitution	1	162159850	162159850	NOS1AP	CCDS1237.1	Intronic	-	-	C	T
PD7516a	Substitution	1	169605977	169605977	-	-	-	-	-	A	T
PD7516a	Substitution	1	170373721	170373721	-	-	-	-	-	G	T
PD7516a	Substitution	1	176182952	176182952	-	-	-	-	-	C	A
PD7516a	Indel	1	186057208	186057208	-	-	-	-	-	-	-
PD7516a	Substitution	1	186993818	186993818	-	-	-	-	-	C	T
PD7516a	Substitution	1	190613669	190613669	-	-	-	-	-	C	A
PD7516a	Substitution	1	190812525	190812525	-	-	-	-	-	C	T
PD7516a	Substitution	1	194106278	194106278	-	-	-	-	-	T	C
PD7516a	Substitution	1	197785053	197785053	-	-	-	-	-	G	A
PD7516a	Substitution	1	200634222	200634222	DDX59	CCDS30964.1	Intronic	-	-	C	A
PD7516a	Indel	1	209484399	209484399	-	-	-	-	-	-	-
PD7516a	Substitution	1	209601599	209601599	-	-	-	-	-	G	A
PD7516a	Substitution	1	212141374	212141374	INTS7	CCDS1501.1	Intronic	-	-	A	G
PD7516a	Substitution	1	216097554	216097554	USH2A	CCDS31025.1	Intronic	-	-	T	A
PD7516a	Substitution	1	222666884	222666884	-	-	-	-	-	C	T
PD7516a	Substitution	1	223530777	223530777	SUSD4	CCDS41471.1	Intronic	-	-	A	T
PD7516a	Substitution	1	223861370	223861370	-	-	-	-	-	C	T
PD7516a	Substitution	1	228019918	228019918	PRSS38	CCDS1563.1	Intronic	-	-	A	G
PD7516a	Substitution	1	236085806	236085806	-	-	-	-	-	C	T
PD7516a	Substitution	1	240235216	240235216	FMN2	ENST00000447095	Intronic	-	-	T	A
PD7516a	Substitution	1	240894531	240894531	-	-	-	-	-	A	C
PD7516a	Substitution	1	244068449	244068449	-	-	-	-	-	C	T
PD7516a	Substitution	1	244268450	244268450	-	-	-	-	-	C	T
PD7516a	Substitution	1	248066973	248066973	-	-	-	-	-	A	G
PD7516a	Substitution	2	2035589	2035589	MYT1L	CCDS46222.1	Intronic	-	-	T	G
PD7516a	Substitution	2	2264226	2264226	MYT1L	CCDS46222.1	Intronic	-	-	G	A
PD7516a	Substitution	2	3265884	3265884	TSSC1	CCDS1651.1	Intronic	-	-	C	T
PD7516a	Substitution	2	3809299	3809299	ENSG00000214866	ENST00000423741	Intronic	-	-	C	G
PD7516a	Substitution	2	4448753	4448753	-	-	-	-	-	G	T
PD7516a	Substitution	2	6696725	6696725	-	-	-	-	-	C	A
PD7516a	Substitution	2	17369685	17369685	-	-	-	-	-	A	G
PD7516a	Substitution	2	34669543	34669543	-	-	-	-	-	G	A
PD7516a	Substitution	2	41001441	41001441	-	-	-	-	-	G	A
PD7516a	Substitution	2	56195279	56195279	-	-	-	-	-	G	C
PD7516a	Substitution	2	67600494	67600494	-	-	-	-	-	A	C
PD7516a	Substitution	2	77686150	77686150	LRRTM4	CCDS46346.1	Intronic	-	-	A	G
PD7516a	Substitution	2	87004776	87004776	RMND5A	CCDS1991.1	Non-coding	r.5913a>g	3prime UTR	A	G
PD7516a	Substitution	2	96501467	96501467	-	-	-	-	-	G	A
PD7516a	Substitution	2	98598901	98598901	TMEM131	CCDS46368.1	Intronic	-	-	C	T
PD7516a	Substitution	2	99535770	99535770	CZorf55	CCDS42720.1	Intronic	-	-	C	T
PD7516a	Substitution	2	103877864	103877864	-	-	-	-	-	T	A
PD7516a	Substitution	2	104151485	104151485	-	-	-	-	-	T	G
PD7516a	Substitution	2	107802821	107802821	-	-	-	-	-	A	T
PD7516a	Substitution	2	111586716	111586716	ACOXL	CCDS42730.1	Intronic	-	-	G	A
PD7516a	Substitution	2	113377705	113377705	-	-	-	-	-	G	C
PD7516a	Substitution	2	116601460	116601460	DPP10	CCDS46400.1	Non-coding	r.4410a>g	3prime UTR	A	G
PD7516a	Substitution	2	117422427	117422427	-	-	-	-	-	T	A
PD7516a	Substitution	2	117661784	117661784	-	-	-	-	-	C	T
PD7516a	Substitution	2	118476808	118476808	-	-	-	-	-	G	T
PD7516a	Substitution	2	119397771	119397771	-	-	-	-	-	G	C
PD7516a	Substitution	2	121231853	121231853	-	-	-	-	-	C	T
PD7516a	Substitution	2	123500526	123500526	-	-	-	-	-	A	G
PD7516a	Substitution	2	124179852	124179852	-	-	-	-	-	A	T
PD7516a	Substitution	2	124605558	124605558	-	-	-	-	-	A	C
PD7516a	Substitution	2	125141196	125141196	CNTNAP5	CCDS46401.1	Intronic	-	-	C	T
PD7516a	Substitution	2	134250560	134250560	NCKAP5	CCDS46418.1	Intronic	-	-	A	G
PD7516a	Substitution	2	137358596	137358596	-	-	-	-	-	T	G
PD7516a	Substitution	2	139268490	139268490	SPOPL	CCDS33298.1	Intronic	-	-	A	T
PD7516a	Substitution	2	139561916	139561916	-	-	-	-	-	C	T
PD7516a	Substitution	2	141316725	141316725	LRP1B	CCDS2182.1	Intronic	-	-	G	A
PD7516a	Substitution	2	141526557	141526557	LRP1B	CCDS2182.1	Intronic	-	-	G	A
PD7516a	Substitution	2	143491094	143491094	-	-	-	-	-	A	G
PD7516a	Substitution	2	157353807	157353807	GPD2	CCDS2202.1	Intronic	-	-	G	A
PD7516a	Substitution	2	157575688	157575688	-	-	-	-	-	G	T
PD7516a	Substitution	2	158367986	158367986	-	-	-	-	-	A	T
PD7516a	Substitution	2	164088263	164088263	-	-	-	-	-	C	T
PD7516a	Substitution	2	181040906	181040906	-	-	-	-	-	T	A
PD7516a	Substitution	2	182568337	182568337	-	-	-	-	-	G	A
PD7516a	Substitution	2	183570634	183570634	-	-	-	-	-	A	G
PD7516a	Substitution	2	185570008	185570008	ZNF804A	CCDS2291.1	Intronic	-	-	C	T
PD7516a	Substitution	2	186324623	186324623	-	-	-	-	-	A	G
PD7516a	Substitution	2	188082274	188082274	-	-	-	-	-	C	T
PD7516a	Substitution	2	192875545	192875545	TMEFF2	CCDS2314.1	Intronic	-	-	G	A
PD7516a	Substitution	2	193987853	193987853	-	-	-	-	-	A	T
PD7516a	Substitution	2	200498826	200498826	-	-	-	-	-	T	A
PD7516a	Substitution	2	205952700	205952700	PARDB3	CCDS42806.1	Intronic	-	-	T	G
PD7516a	Substitution	2	208311154	208311154	-	-	-	-	-	A	C
PD7516a	Substitution	2	216584263	216584263	-	-	-	-	-	C	A

PD7516a	Substitution	9	118246100	118246100	-	-	-	-	-	-	T	C
PD7516a	Substitution	9	128559534	128559534	PBX3	CCDS6865.1	Intronic	-	-	-	A	G
PD7516a	Substitution	9	129604876	129604876	-	-	-	-	-	-	C	T
PD7516a	Substitution	9	131655119	131655119	LRRC8A	CCDS35155.1	Intronic	-	-	-	C	T
PD7516a	Substitution	9	137750604	137750604	-	-	-	-	-	-	C	T
PD7516a	Substitution	9	138223849	138223849	-	-	-	-	-	-	G	A
PD7516a	Substitution	10	10154037	10154037	-	-	-	-	-	-	A	G
PD7516a	Substitution	10	13533633	13533633	BEND7	CCDS7099.1	Intronic	-	-	-	A	C
PD7516a	Substitution	10	16277115	16277115	-	-	-	-	-	-	T	G
PD7516a	Substitution	10	16347949	16347949	-	-	-	-	-	-	C	A
PD7516a	Substitution	10	18881272	18881272	NSUN6	CCDS7130.1	Intronic	-	-	-	C	T
PD7516a	Substitution	10	23756835	23756835	-	-	-	-	-	-	T	C
PD7516a	Substitution	10	24860648	24860648	-	-	-	-	-	-	G	A
PD7516a	Substitution	10	36493491	36493491	-	-	-	-	-	-	A	T
PD7516a	Substitution	10	37828353	37828353	-	-	-	-	-	-	C	T
PD7516a	Substitution	10	54689713	54689713	-	-	-	-	-	-	G	A
PD7516a	Substitution	10	54854693	54854693	-	-	-	-	-	-	C	G
PD7516a	Substitution	10	58972239	58972239	-	-	-	-	-	-	G	A
PD7516a	Substitution	10	59011843	59011843	-	-	-	-	-	-	A	G
PD7516a	Substitution	10	62118058	62118058	ANK3	CCDS7258.1	Intronic	-	-	-	A	G
PD7516a	Indel	10	63186485	63186486	-	-	-	-	-	-	-	-
PD7516a	Substitution	10	66921669	66921669	-	-	-	-	-	-	A	G
PD7516a	Substitution	10	80192750	80192750	-	-	-	-	-	-	G	T
PD7516a	Substitution	10	83960569	83960569	NRG3	CCDS31233.1	Intronic	-	-	-	C	T
PD7516a	Substitution	10	86029804	86029804	-	-	-	-	-	-	T	A
PD7516a	Substitution	10	86546229	86546229	-	-	-	-	-	-	A	T
PD7516a	Substitution	10	94467144	94467144	-	-	-	-	-	-	T	A
PD7516a	Substitution	10	117013090	117013090	ATRNL1	CCDS7592.1	Intronic	-	-	-	T	C
PD7516a	Indel	10	117174209	117174212	-	-	-	-	-	-	-	-
PD7516a	Substitution	10	126064395	126064395	-	-	-	-	-	-	G	C
PD7516a	Substitution	10	129997191	129997191	-	-	-	-	-	-	A	G
PD7516a	Substitution	10	132467822	132467822	-	-	-	-	-	-	T	A
PD7516a	Substitution	10	132475834	132475834	-	-	-	-	-	-	T	A
PD7516a	Substitution	10	135424512	135424512	-	-	-	-	-	-	A	G
PD7516a	Substitution	11	1560531	1560531	-	-	-	-	-	-	G	A
PD7516a	Substitution	11	8160847	8160847	RIC3	CCDS7788.1	Intronic	-	-	-	T	C
PD7516a	Substitution	11	8591535	8591535	STK33	CCDS7789.1	Intronic	-	-	-	G	T
PD7516a	Substitution	11	10058753	10058753	SBF2	CCDS31427.1	Intronic	-	-	-	A	G
PD7516a	Substitution	11	10768060	10768060	-	-	-	-	-	-	A	G
PD7516a	Substitution	11	21461187	21461187	NELL1	CCDS7855.1	Intronic	-	-	-	A	G
PD7516a	Substitution	11	24895826	24895826	LUZP2	CCDS31446.1	Intronic	-	-	-	C	A
PD7516a	Substitution	11	25024336	25024336	LUZP2	CCDS31446.1	Intronic	-	-	-	G	T
PD7516a	Indel	11	28711530	28711532	-	-	-	-	-	-	-	-
PD7516a	Substitution	11	30166128	30166128	-	-	-	-	-	-	A	G
PD7516a	Substitution	11	39331295	39331295	-	-	-	-	-	-	G	A
PD7516a	Substitution	11	40058360	40058360	-	-	-	-	-	-	A	G
PD7516a	Substitution	11	41998087	41998087	-	-	-	-	-	-	T	C
PD7516a	Substitution	11	42989601	42989601	-	-	-	-	-	-	C	T
PD7516a	Substitution	11	50171037	50171037	-	-	-	-	-	-	T	G
PD7516a	Substitution	11	55402863	55402863	-	-	-	-	-	-	G	T
PD7516a	Substitution	11	59072329	59072329	-	-	-	-	-	-	G	T
PD7516a	Substitution	11	63273122	63273122	-	-	-	-	-	-	A	T
PD7516a	Substitution	11	66729374	66729374	-	-	-	-	-	-	G	T
PD7516a	Substitution	11	79119221	79119221	ODZ4	CCDS44688.1	Intronic	-	-	-	T	C
PD7516a	Substitution	11	83430337	83430337	DLG2	CCDS41696.1	Intronic	-	-	-	A	T
PD7516a	Substitution	11	92530879	92530879	FAT3	CCDS44706.1	Intronic	-	-	-	A	T
PD7516a	Substitution	11	94047220	94047220	-	-	-	-	-	-	G	A
PD7516a	Substitution	11	97768390	97768390	-	-	-	-	-	-	T	A
PD7516a	Substitution	11	105665593	105665593	GRIA4	CCDS41706.1	Intronic	-	-	-	A	C
PD7516a	Substitution	11	109567235	109567235	-	-	-	-	-	-	T	A
PD7516a	Substitution	11	110135397	110135397	RDX	CCDS8343.1	Intronic	-	-	-	T	C
PD7516a	Substitution	11	125200064	125200064	PKNOX2	CCDS41730.1	Intronic	-	-	-	A	G
PD7516a	Substitution	11	125574944	125574944	-	-	-	-	-	-	C	T
PD7516a	Substitution	11	125826119	125826119	-	-	-	-	-	-	T	C
PD7516a	Substitution	11	133634818	133634818	-	-	-	-	-	-	T	C
PD7516a	Substitution	12	3520074	3520074	-	-	-	-	-	-	G	A
PD7516a	Substitution	12	6661729	6661729	IFFO1	CCDS41741.1	Intronic	-	-	-	T	G
PD7516a	Substitution	12	6862648	6862648	-	-	-	-	-	-	G	C
PD7516a	Substitution	12	7910427	7910427	-	-	-	-	-	-	G	C
PD7516a	Substitution	12	8002662	8002662	SLC2A14	CCDS8585.1	Intronic	-	-	-	T	A
PD7516a	Substitution	12	17732249	17732249	-	-	-	-	-	-	G	A
PD7516a	Substitution	12	32000886	32000886	-	-	-	-	-	-	C	A
PD7516a	Substitution	12	44690847	44690847	TMEM117	CCDS8745.1	Intronic	-	-	-	G	A
PD7516a	Substitution	12	55114025	55114025	-	-	-	-	-	-	T	C
PD7516a	Substitution	12	57910337	57910337	MARS	CCDS8942.1	c.2676A>G	p.E892E	Silent	-	A	G
PD7516a	Substitution	12	59180358	59180358	-	-	-	-	-	-	C	T
PD7516a	Substitution	12	61357478	61357478	-	-	-	-	-	-	A	T
PD7516a	Substitution	12	64124895	64124895	-	-	-	-	-	-	A	T
PD7516a	Substitution	12	70759888	70759888	-	-	-	-	-	-	G	A
PD7516a	Substitution	12	79213692	79213692	-	-	-	-	-	-	A	T
PD7516a	Substitution	12	84769920	84769920	-	-	-	-	-	-	T	A
PD7516a	Substitution	12	87000873	87000873	-	-	-	-	-	-	G	C
PD7516a	Substitution	12	90813776	90813776	-	-	-	-	-	-	A	C
PD7516a	Substitution	12	95000600	95000600	TMCC3	CCDS31877.1	Intronic	-	-	-	A	G
PD7516a	Substitution	12	100572002	100572002	-	-	-	-	-	-	G	C
PD7516a	Indel	12	109732774	109732774	-	-	-	-	-	-	-	-
PD7516a	Substitution	12	113683727	113683727	TPCN1	CCDS31908.1	Intronic	-	-	-	C	T
PD7516a	Substitution	12	127091843	127091843	-	-	-	-	-	-	C	T
PD7516a	Substitution	12	130776085	130776085	-	-	-	-	-	-	C	T
PD7516a	Substitution	13	22035009	22035009	-	-	-	-	-	-	C	A
PD7516a	Substitution	13	41710268	41710268	AL354696.6	ENST00000499512	Intronic	-	-	-	C	A
PD7516a	Substitution	13	43537810	43537810	EPST11	CCDS9387.1	Intronic	-	-	-	C	G
PD7516a	Substitution	13	66806100	66806100	-	-	-	-	-	-	C	T
PD7516a	Substitution	13	67398898	67398898	PCDH9	CCDS9443.1	Intronic	-	-	-	T	C
PD7516a	Substitution	13	69651096	69651096	-	-	-	-	-	-	C	A
PD7516a	Substitution	13	70498981	70498981	KLHL1	CCDS9445.1	Intronic	-	-	-	C	A
PD7516a	Substitution	13	81550714	81550714	-	-	-	-	-	-	G	A
PD7516a	Substitution	13	84047441	84047441	-	-	-	-	-	-	G	T
PD7516a	Substitution	13	92293541	92293541	GPC5	CCDS9468.1	Intronic	-	-	-	C	T
PD7516a	Substitution	13	97270978	97270978	HS6ST3	CCDS9481.1	Intronic	-	-	-	T	C
PD7516a	Substitution	13	106422773	106422773	-	-	-	-	-	-	G	T
PD7516a	Substitution	14	22455825	22455825	-	-	-	-	-	-	C	T
PD7516a	Indel	14	24346768	24346768	-	-	-	-	-	-	-	-
PD7516a	Substitution	14	24367628	24367628	-	-	-	-	-	-	G	A
PD7516a	Substitution	14	28883823	28883823	-	-	-	-	-	-	T	A
PD7516a	Substitution	14	29389828	29389828	-	-	-	-	-	-	C	A
PD7516a	Substitution	14	33953543	33953543	NPAS3	CCDS9645.1	Intronic	-	-	-	A	G
PD7516a	Substitution	14	36846064	36846064	-	-	-	-	-	-	C	T
PD7516a	Substitution	14	42194076	42194076	LRFN5	CCDS9678.1	Intronic	-	-	-	A	C
PD7516a	Substitution	14	50541902	50541902	-	-	-	-	-	-	C	T
PD7516a	Substitution	14	51176294	51176294	AL358334.1	ENST00000501589	Intronic	-	-	-	T	A

PD7517a	Substitution	5	169241184	169241184	DOCK2	CCDS4371.1	Intronic	-	-	-	C	A
PD7517a	Substitution	5	170812337	170812337	-	-	-	-	-	-	A	T
PD7517a	Substitution	5	175982165	175982165	CDHR2	CCDS34297.1	Intronic	-	-	-	C	T
PD7517a	Substitution	5	180633475	180633475	-	-	-	-	-	-	A	G
PD7517a	Indel	6	6168444	6168444	-	-	-	-	-	-	-	-
PD7517a	Substitution	6	10018403	10018403	OFCC1	ENST00000485268	Intronic	-	-	-	C	A
PD7517a	Substitution	6	23532212	23532212	-	-	-	-	-	-	C	A
PD7517a	Substitution	6	33798406	33798406	-	-	-	-	-	-	T	C
PD7517a	Substitution	6	42041964	42041964	TAF8	CCDS43462.1	Intronic	-	-	-	C	T
PD7517a	Substitution	6	47910795	47910795	C6orf138	ENST00000398738	Intronic	-	-	-	A	T
PD7517a	Substitution	6	49805900	49805900	CRISP1	CCDS4931.1	Intronic	-	-	-	T	A
PD7517a	Substitution	6	56864592	56864592	BEND6	CCDS43476.1	Intronic	-	-	-	A	T
PD7517a	Substitution	6	57869669	57869669	-	-	-	-	-	-	T	A
PD7517a	Substitution	6	57990430	57990430	-	-	-	-	-	-	C	A
PD7517a	Indel	6	63456662	63456662	-	-	-	-	-	-	-	-
PD7517a	Substitution	6	64876800	64876800	EYS	CCDS47445.1	Intronic	-	-	-	C	T
PD7517a	Substitution	6	73107072	73107072	RIMS1	CCDS47449.1	Intronic	-	-	-	A	C
PD7517a	Substitution	6	76412043	76412043	SEN6	CCDS47454.1	Intronic	-	-	-	C	G
PD7517a	Substitution	6	76694835	76694835	IMPG1	CCDS4985.1	Intronic	-	-	-	G	T
PD7517a	Substitution	6	77855910	77855910	-	-	-	-	-	-	C	A
PD7517a	Substitution	6	84944075	84944075	-	-	-	-	-	-	C	T
PD7517a	Substitution	6	86490920	86490920	-	-	-	-	-	-	A	T
PD7517a	Substitution	6	88185263	88185263	SLC35A1	CCDS5010.1	Intronic	-	-	-	T	C
PD7517a	Substitution	6	90339846	90339846	ANKRD6	CCDS47460.1	Intronic	-	-	-	C	T
PD7517a	Substitution	6	96006323	96006323	-	-	-	-	-	-	T	A
PD7517a	Indel	6	100845630	100845630	-	-	-	-	-	-	-	-
PD7517a	Substitution	6	107185662	107185662	-	-	-	-	-	-	C	A
PD7517a	Substitution	6	110698776	110698776	-	-	-	-	-	-	C	T
PD7517a	Substitution	6	112572916	112572916	LAMA4	CCDS34514.1	Intronic	-	-	-	C	T
PD7517a	Substitution	6	113988810	113988810	-	-	-	-	-	-	C	A
PD7517a	Substitution	6	116192253	116192253	-	-	-	-	-	-	C	T
PD7517a	Substitution	6	116475305	116475305	NT5DC1	CCDS5104.1	Intronic	-	-	-	T	C
PD7517a	Substitution	6	120312860	120312860	-	-	-	-	-	-	G	A
PD7517a	Substitution	6	123645958	123645958	TRDN	ENST00000334268	Intronic	-	-	-	T	A
PD7517a	Substitution	6	133701963	133701963	EYA4	CCDS5166.1	Intronic	-	-	-	C	T
PD7517a	Substitution	6	139674096	139674096	-	-	-	-	-	-	C	T
PD7517a	Substitution	6	147099191	147099191	C6orf103	CCDS47498.1	Intronic	-	-	-	C	T
PD7517a	Substitution	6	154182093	154182093	-	-	-	-	-	-	C	A
PD7517a	Substitution	6	161441802	161441802	MAP3K4	CCDS34565.1	Intronic	-	-	-	G	A
PD7517a	Substitution	6	168153789	168153789	-	-	-	-	-	-	C	G
PD7517a	Substitution	7	5550470	5550470	FBXL18	CCDS43546.1	Intronic	-	-	-	C	T
PD7517a	Substitution	7	7404174	7404174	COL28A1	CCDS43553.1	Intronic	-	-	-	G	A
PD7517a	Substitution	7	10603400	10603400	-	-	-	-	-	-	A	T
PD7517a	Substitution	7	26409724	26409724	SNX10	CCDS5399.1	Intronic	-	-	-	G	T
PD7517a	Substitution	7	29263684	29263684	CHN2	CCDS5420.1	Intronic	-	-	-	T	G
PD7517a	Substitution	7	33009107	33009107	FKBP9	CCDS5439.1	Intronic	-	-	-	C	A
PD7517a	Substitution	7	40434669	40434669	C7orf10	ENST00000309930	Intronic	-	-	-	A	T
PD7517a	Substitution	7	41888655	41888655	-	-	-	-	-	-	C	A
PD7517a	Substitution	7	42961888	42961888	PSMA2	CCDS5467.1	Intronic	-	-	-	A	G
PD7517a	Substitution	7	43674387	43674387	AC005189.1	ENST00000509705	Intronic	-	-	-	G	T
PD7517a	Substitution	7	51136686	51136686	COBL	CCDS34637.1	Intronic	-	-	-	C	T
PD7517a	Substitution	7	55860216	55860216	-	-	-	-	-	-	G	T
PD7517a	Substitution	7	56460257	56460257	-	-	-	-	-	-	G	T
PD7517a	Substitution	7	57216966	57216966	-	-	-	-	-	-	A	C
PD7517a	Substitution	7	63630504	63630504	-	-	-	-	-	-	G	A
PD7517a	Substitution	7	64475633	64475633	-	-	-	-	-	-	G	A
PD7517a	Substitution	7	67536375	67536375	-	-	-	-	-	-	G	A
PD7517a	Substitution	7	68830528	68830528	-	-	-	-	-	-	T	A
PD7517a	Substitution	7	83676245	83676245	SEMA3A	CCDS5599.1	Intronic	-	-	-	G	T
PD7517a	Substitution	7	84022314	84022314	SEMA3A	ENST00000424555	Intronic	-	-	-	C	A
PD7517a	Substitution	7	92202439	92202439	FAM133B	CCDS47641.1	Intronic	-	-	-	G	A
PD7517a	Substitution	7	94797905	94797905	PPP1R9A	CCDS34683.1	Intronic	-	-	-	T	A
PD7517a	Substitution	7	106038289	106038289	-	-	-	-	-	-	A	T
PD7517a	Substitution	7	106120509	106120509	-	-	-	-	-	-	A	C
PD7517a	Substitution	7	108358449	108358449	-	-	-	-	-	-	G	T
PD7517a	Substitution	7	112591422	112591422	-	-	-	-	-	-	G	C
PD7517a	Substitution	7	113439521	113439521	-	-	-	-	-	-	A	G
PD7517a	Substitution	7	118396781	118396781	-	-	-	-	-	-	G	A
PD7517a	Substitution	7	118665537	118665537	-	-	-	-	-	-	T	A
PD7517a	Substitution	7	120097123	120097123	KCND2	CCDS5776.1	Intronic	-	-	-	G	A
PD7517a	Substitution	7	122961759	122961759	-	-	-	-	-	-	G	A
PD7517a	Substitution	7	124403004	124403004	GPR37	CCDS5792.1	Intronic	-	-	-	T	A
PD7517a	Substitution	7	131476791	131476791	-	-	-	-	-	-	G	A
PD7517a	Substitution	7	146647582	146647582	CNTNAP2	CCDS5889.1	Intronic	-	-	-	T	G
PD7517a	Substitution	7	147510234	147510234	CNTNAP2	CCDS5889.1	Intronic	-	-	-	A	T
PD7517a	Substitution	7	158963837	158963837	-	-	-	-	-	-	C	T
PD7517a	Substitution	8	6283786	6283786	MCPH1	CCDS43689.1	Intronic	-	-	-	C	T
PD7517a	Substitution	8	6507870	6507870	-	-	-	-	-	-	A	T
PD7517a	Substitution	8	7226544	7226544	ZNF705G	CCDS47773.1	Intronic	-	-	-	C	T
PD7517a	Substitution	8	9837455	9837455	-	-	-	-	-	-	T	C
PD7517a	Substitution	8	13609560	13609560	-	-	-	-	-	-	G	A
PD7517a	Substitution	8	14484399	14484399	SGCZ	CCDS5992.2	Intronic	-	-	-	T	A
PD7517a	Substitution	8	14759932	14759932	SGCZ	CCDS5992.2	Intronic	-	-	-	T	C
PD7517a	Substitution	8	16613443	16613443	-	-	-	-	-	-	G	T
PD7517a	Substitution	8	19501538	19501538	CSGALNACT1	CCDS6010.1	Intronic	-	-	-	G	A
PD7517a	Substitution	8	20516856	20516856	-	-	-	-	-	-	T	C
PD7517a	Substitution	8	27256283	27256283	PTK2B	CCDS6057.1	Intronic	-	-	-	A	G
PD7517a	Indel	8	32261664	32261664	-	-	-	-	-	-	-	-
PD7517a	Substitution	8	32808433	32808433	-	-	-	-	-	-	T	C
PD7517a	Substitution	8	36217190	36217190	-	-	-	-	-	-	C	A
PD7517a	Substitution	8	39125633	39125633	ADAM32	CCDS47846.1	Intronic	-	-	-	C	T
PD7517a	Substitution	8	40611568	40611568	ZMAT4	CCDS34885.1	Intronic	-	-	-	G	T
PD7517a	Indel	8	47283508	47283508	-	-	-	-	-	-	-	-
PD7517a	Substitution	8	53049254	53049254	ST18	CCDS6149.1	Intronic	-	-	-	C	G
PD7517a	Substitution	8	53315676	53315676	ST18	CCDS6149.1	Intronic	-	-	-	G	C
PD7517a	Indel	8	58568345	58568345	-	-	-	-	-	-	-	-
PD7517a	Substitution	8	68849751	68849751	-	-	-	-	-	-	C	A
PD7517a	Substitution	8	69898442	69898442	-	-	-	-	-	-	G	A
PD7517a	Substitution	8	73521722	73521722	KCNB2	CCDS6209.1	Intronic	-	-	-	A	T
PD7517a	Substitution	8	74218987	74218987	RDH10	CCDS6213.1	Intronic	-	-	-	G	A
PD7517a	Substitution	8	80600067	80600067	-	-	-	-	-	-	G	A
PD7517a	Substitution	8	84275550	84275550	-	-	-	-	-	-	G	A
PD7517a	Substitution	8	87395237	87395237	WWP1	CCDS6242.1	Intronic	-	-	-	A	T
PD7517a	Substitution	8	87634897	87634897	CNGB3	CCDS6244.1	Intronic	-	-	-	C	A
PD7517a	Substitution	8	106807175	106807175	ZFPM2	CCDS47908.1	Intronic	-	-	-	C	T
PD7517a	Substitution	8	111281427	111281427	-	-	-	-	-	-	G	A
PD7517a	Substitution	8	111896849	111896849	-	-	-	-	-	-	G	T
PD7517a	Substitution	8	112713413	112713413	-	-	-	-	-	-	G	C
PD7517a	Substitution	8	113556201	113556201	CSMD3	CCDS6315.1	Intronic	-	-	-	A	T
PD7517a	Substitution	8	126675712	126675712	-	-	-	-	-	-	C	A
PD7517a	Substitution	8	128072067	128072067	-	-	-	-	-	-	G	A

PD7517a	Substitution	13	69524186	69524186	-	-	-	-	-	-	C	T
PD7517a	Substitution	13	75623624	75623624	-	-	-	-	-	-	C	T
PD7517a	Substitution	13	91062718	91062718	-	-	-	-	-	-	C	A
PD7517a	Substitution	13	91147254	91147254	-	-	-	-	-	-	C	T
PD7517a	Substitution	13	103911616	103911616	-	-	-	-	-	-	T	G
PD7517a	Substitution	13	105966202	105966202	-	-	-	-	-	-	C	T
PD7517a	Substitution	13	107728268	107728268	-	-	-	-	-	-	G	A
PD7517a	Substitution	13	111081903	111081903	COL4A2	CCDS41907.1	Intronic	-	-	-	C	T
PD7517a	Substitution	14	25075023	25075023	-	-	-	-	-	-	T	C
PD7517a	Substitution	14	28432788	28432788	-	-	-	-	-	-	G	T
PD7517a	Substitution	14	42817140	42817140	-	-	-	-	-	-	C	G
PD7517a	Substitution	14	42817141	42817141	-	-	-	-	-	-	C	A
PD7517a	Indel	14	62869193	62869193	-	-	-	-	-	-	-	-
PD7517a	Substitution	14	75951247	75951247	-	-	-	-	-	-	G	T
PD7517a	Substitution	14	79379333	79379333	NRXN3	CCDS9870.1	Intronic	-	-	-	A	C
PD7517a	Substitution	14	80137869	80137869	NRXN3	CCDS45145.1	Intronic	-	-	-	T	A
PD7517a	Substitution	14	81422473	81422473	TSHR	CCDS9872.1	Intronic	-	-	-	G	A
PD7517a	Substitution	14	83602553	83602553	-	-	-	-	-	-	G	A
PD7517a	Substitution	14	85222293	85222293	-	-	-	-	-	-	C	A
PD7517a	Substitution	14	88555982	88555982	-	-	-	-	-	-	G	A
PD7517a	Substitution	14	92724019	92724019	-	-	-	-	-	-	G	A
PD7517a	Substitution	14	95997214	95997214	-	-	-	-	-	-	A	T
PD7517a	Substitution	14	102440784	102440784	DYNC1H1	CCDS9966.1	Intronic	-	-	-	A	G
PD7517a	Substitution	14	106230532	106230532	-	-	-	-	-	-	C	T
PD7517a	Substitution	15	20059084	20059084	ENSG00000215567	ENST00000413399	c.34C>T	p.Q12*	Nonsense	-	C	T
PD7517a	Substitution	15	25072085	25072085	SNRPN	CCDS10017.1	Intronic	-	-	-	G	A
PD7517a	Substitution	15	28277557	28277557	OCA2	CCDS10020.1	Intronic	-	-	-	A	G
PD7517a	Substitution	15	49318219	49318219	SECISBP2L	CCDS32234.1	Intronic	-	-	-	A	T
PD7517a	Substitution	15	70938583	70938583	-	-	-	-	-	-	A	C
PD7517a	Substitution	15	86753988	86753988	AGBL1	ENST00000421325	Intronic	-	-	-	G	A
PD7517a	Substitution	15	88678180	88678180	NTRK3	CCDS10340.1	Intronic	-	-	-	G	A
PD7517a	Substitution	15	93978720	93978720	-	-	-	-	-	-	C	T
PD7517a	Substitution	15	97839409	97839409	-	-	-	-	-	-	C	A
PD7517a	Substitution	16	6474295	6474295	-	-	-	-	-	-	G	T
PD7517a	Substitution	16	9857819	9857819	GRIN2A	CCDS10539.1	c.3582A>G	p.K1194K	Silent	-	T	C
PD7517a	Substitution	16	12637530	12637530	SNX29	CCDS45416.1	Intronic	-	-	-	T	C
PD7517a	Substitution	16	17606842	17606842	-	-	-	-	-	-	G	C
PD7517a	Substitution	16	22766796	22766796	ENSG00000224154	ENST00000430965	Intronic	-	-	-	A	G
PD7517a	Substitution	16	29836087	29836087	MVP	CCDS10656.1	Intronic	-	-	-	G	T
PD7517a	Substitution	16	33589902	33589902	-	-	-	-	-	-	C	G
PD7517a	Substitution	16	52135034	52135034	-	-	-	-	-	-	C	T
PD7517a	Substitution	16	60602272	60602272	-	-	-	-	-	-	C	A
PD7517a	Substitution	16	71529154	71529154	-	-	-	-	-	-	G	A
PD7517a	Substitution	16	83452436	83452436	CDH13	ENST00000268613	Intronic	-	-	-	C	T
PD7517a	Substitution	16	84455678	84455678	ATP2C2	CCDS42207.1	Intronic	-	-	-	C	A
PD7517a	Substitution	16	89018843	89018843	CBFA2T3	CCDS10972.1	Intronic	-	-	-	G	A
PD7517a	Substitution	17	3093317	3093317	-	-	-	-	-	-	C	T
PD7517a	Substitution	17	9743542	9743542	GLP2R	CCDS11150.1	Intronic	-	-	-	T	G
PD7517a	Substitution	17	13323071	13323071	-	-	-	-	-	-	C	A
PD7517a	Substitution	17	15595745	15595745	-	-	-	-	-	-	C	A
PD7517a	Substitution	17	20802903	20802903	-	-	-	-	-	-	A	T
PD7517a	Substitution	17	31550497	31550497	ACCN1	CCDS11276.1	Intronic	-	-	-	G	A
PD7517a	Substitution	17	31645966	31645966	ACCN1	CCDS42296.1	Intronic	-	-	-	T	A
PD7517a	Substitution	17	32840140	32840140	-	-	-	-	-	-	A	T
PD7517a	Substitution	17	45252634	45252634	CDC27	CCDS45720.1	Intronic	-	-	-	A	T
PD7517a	Substitution	17	68211089	68211089	-	-	-	-	-	-	G	T
PD7517a	Substitution	17	68223374	68223374	-	-	-	-	-	-	G	T
PD7517a	Substitution	17	68973045	68973045	-	-	-	-	-	-	T	C
PD7517a	Substitution	17	73775146	73775146	H3F3B	CCDS11729.1	c.110A>T	p.K37M	Missense	-	T	A
PD7517a	Substitution	17	79128901	79128901	AATK	CCDS45807.1	Intronic	-	-	-	C	T
PD7517a	Substitution	18	3866942	3866942	DLGAP1	CCDS11836.1	Intronic	-	-	-	G	A
PD7517a	Substitution	18	4577137	4577137	-	-	-	-	-	-	A	T
PD7517a	Substitution	18	7162447	7162447	-	-	-	-	-	-	C	G
PD7517a	Substitution	18	22798123	22798123	ZNF521	CCDS32806.1	Intronic	-	-	-	A	G
PD7517a	Substitution	18	26687115	26687115	-	-	-	-	-	-	T	C
PD7517a	Substitution	18	30559081	30559081	C18orf34	CCDS42424.1	Intronic	-	-	-	G	T
PD7517a	Substitution	18	32548572	32548572	-	-	-	-	-	-	G	C
PD7517a	Substitution	18	33997910	33997910	FHOD3	CCDS32816.1	Intronic	-	-	-	G	C
PD7517a	Substitution	18	36806892	36806892	AC105201.1	ENST00000510201	Intronic	-	-	-	G	C
PD7517a	Substitution	18	37771154	37771154	-	-	-	-	-	-	G	C
PD7517a	Substitution	18	47212566	47212566	-	-	-	-	-	-	G	T
PD7517a	Substitution	18	49883396	49883396	DCC	CCDS11952.1	Intronic	-	-	-	A	C
PD7517a	Substitution	18	62253424	62253424	-	-	-	-	-	-	G	A
PD7517a	Substitution	18	63163740	63163740	-	-	-	-	-	-	A	G
PD7517a	Substitution	18	69492741	69492741	-	-	-	-	-	-	C	A
PD7517a	Substitution	18	70272117	70272117	-	-	-	-	-	-	A	T
PD7517a	Substitution	18	71975299	71975299	-	-	-	-	-	-	G	A
PD7517a	Substitution	18	72089783	72089783	-	-	-	-	-	-	G	T
PD7517a	Substitution	18	75813338	75813338	-	-	-	-	-	-	G	A
PD7517a	Substitution	18	77514135	77514135	CTDP1	CCDS12017.1	Non-coding	r.3378c>u	3prime UTR	-	C	T
PD7517a	Substitution	19	4282283	4282283	SHD	CCDS12125.1	Intronic	-	-	-	G	A
PD7517a	Substitution	19	6435422	6435422	-	-	-	-	-	-	G	A
PD7517a	Substitution	19	11057354	11057354	-	-	-	-	-	-	T	C
PD7517a	Substitution	19	33545453	33545453	RHPN2	CCDS12427.1	Intronic	-	-	-	C	T
PD7517a	Substitution	19	58194434	58194434	ZNF551	CCDS12959.1	Intronic	-	-	-	A	G
PD7517a	Substitution	20	21179724	21179724	-	-	-	-	-	-	G	A
PD7517a	Substitution	20	24296118	24296118	-	-	-	-	-	-	G	A
PD7517a	Substitution	20	38919661	38919661	-	-	-	-	-	-	T	C
PD7517a	Substitution	20	42804768	42804768	JPH2	CCDS13325.1	Intronic	-	-	-	T	C
PD7517a	Substitution	20	43420074	43420074	RIMS4	CCDS13338.1	Intronic	-	-	-	C	T
PD7517a	Substitution	20	48358710	48358710	-	-	-	-	-	-	T	G
PD7517a	Substitution	20	56667573	56667573	-	-	-	-	-	-	G	T
PD7517a	Substitution	21	16273549	16273549	-	-	-	-	-	-	A	G
PD7517a	Substitution	21	18287565	18287565	-	-	-	-	-	-	C	T
PD7517a	Substitution	21	19759506	19759506	PRSS7	CCDS13571.1	Intronic	-	-	-	T	A
PD7517a	Substitution	21	21109364	21109364	-	-	-	-	-	-	T	A
PD7517a	Substitution	21	23403459	23403459	-	-	-	-	-	-	T	A
PD7517a	Substitution	21	23765918	23765918	-	-	-	-	-	-	T	A
PD7517a	Substitution	21	35035051	35035051	ITSN1	CCDS33545.1	Intronic	-	-	-	C	T
PD7517a	Substitution	21	39393340	39393340	DISCR4	ENST00000398948	Intronic	-	-	-	G	A
PD7517a	Substitution	21	45654033	45654033	ICOSLG	CCDS42952.1	Intronic	-	-	-	C	A
PD7517a	Substitution	22	17231207	17231207	-	-	-	-	-	-	T	C
PD7517a	Substitution	22	19097611	19097611	DGCR2	CCDS33598.1	Intronic	-	-	-	T	A
PD7517a	Substitution	22	22247861	22247861	-	-	-	-	-	-	C	A
PD7517a	Substitution	22	29271334	29271334	-	-	-	-	-	-	G	A
PD7517a	Substitution	22	29383867	29383867	ZNRF3	CCDS42999.1	Intronic	-	-	-	G	A
PD7517a	Substitution	22	31709453	31709453	-	-	-	-	-	-	C	T
PD7517a	Substitution	22	34277705	34277705	LARGE	CCDS13912.1	Intronic	-	-	-	G	A
PD7517a	Substitution	22	34578998	34578998	-	-	-	-	-	-	C	T
PD7517a	Substitution	22	34592871	34592871	-	-	-	-	-	-	A	T
PD7517a	Substitution	22	40509228	40509228	TNRC6B	CCDS46712.1	Intronic	-	-	-	A	T

PD7517a	Substitution	22	48454293	48454293	-	-	-	-	-	-	-	A	T
PD7517a	Substitution	X	5175920	5175920	-	-	-	-	-	-	-	G	T
PD7517a	Substitution	X	25925459	25925459	-	-	-	-	-	-	-	T	C
PD7517a	Substitution	X	27433376	27433376	-	-	-	-	-	-	-	G	A
PD7517a	Substitution	X	33416985	33416985	-	-	-	-	-	-	-	A	G
PD7517a	Substitution	X	35991146	35991146	CXorf22	CCDS14237.2	Intronic	-	-	-	-	C	A
PD7517a	Substitution	X	62149076	62149076	-	-	-	-	-	-	-	G	A
PD7517a	Substitution	X	81104959	81104959	-	-	-	-	-	-	-	G	C
PD7517a	Substitution	X	82485229	82485229	-	-	-	-	-	-	-	C	G
PD7517a	Substitution	X	86717098	86717098	-	-	-	-	-	-	-	C	T
PD7517a	Substitution	X	90318931	90318931	-	-	-	-	-	-	-	G	A
PD7517a	Substitution	X	97363830	97363830	-	-	-	-	-	-	-	A	G
PD7517a	Substitution	X	113963651	113963651	HTR2C	CCDS14564.1	Intronic	-	-	-	-	A	G
PD7517a	Substitution	X	117217032	117217032	KLHL13	ENST00000371882	Intronic	-	-	-	-	T	C
PD7517a	Substitution	X	124223013	124223013	-	-	-	-	-	-	-	C	G
PD7517a	Substitution	X	125424849	125424849	-	-	-	-	-	-	-	C	A
PD7517a	Substitution	X	131646223	131646223	-	-	-	-	-	-	-	T	C
PD7517a	Substitution	X	139129430	139129430	-	-	-	-	-	-	-	G	T
PD7517a	Substitution	X	140835371	140835371	-	-	-	-	-	-	-	A	T
PD7517a	Substitution	Y	4745449	4745449	-	-	-	-	-	-	-	A	G
PD7517a	Substitution	Y	18918278	18918278	-	-	-	-	-	-	-	C	A
PD7517a	Substitution	Y	23740344	23740344	-	-	-	-	-	-	-	G	C
PD7518a	Substitution	1	6215355	6215355	CHD5	CCDS57.1	Intronic	-	-	-	-	C	T
PD7518a	Substitution	1	12319624	12319624	VPS13D	CCDS30588.1	Intronic	-	-	-	-	G	A
PD7518a	Substitution	1	13894257	13894257	-	-	-	-	-	-	-	G	A
PD7518a	Substitution	1	22946496	22946496	-	-	-	-	-	-	-	C	T
PD7518a	Substitution	1	37020816	37020816	-	-	-	-	-	-	-	G	A
PD7518a	Substitution	1	42090148	42090148	HIVEP3	CCDS44124.1	Intronic	-	-	-	-	G	T
PD7518a	Substitution	1	49759992	49759992	AGBL4	CCDS44137.1	Intronic	-	-	-	-	T	A
PD7518a	Substitution	1	61552111	61552111	NFIA	CCDS44156.1	Intronic	-	-	-	-	T	A
PD7518a	Substitution	1	63969568	63969568	ITGB3BP	CCDS30736.1	Intronic	-	-	-	-	G	T
PD7518a	Indel	1	64221682	64221682	-	-	-	-	-	-	-	-	-
PD7518a	Substitution	1	69994062	69994062	-	-	-	-	-	-	-	A	C
PD7518a	Substitution	1	81441946	81441946	-	-	-	-	-	-	-	A	G
PD7518a	Substitution	1	84409004	84409004	TTL7	CCDS690.2	Intronic	-	-	-	-	G	A
PD7518a	Substitution	1	95879962	95879962	-	-	-	-	-	-	-	G	A
PD7518a	Substitution	1	96129177	96129177	-	-	-	-	-	-	-	C	T
PD7518a	Substitution	1	101606858	101606858	-	-	-	-	-	-	-	G	A
PD7518a	Substitution	1	103012516	103012516	-	-	-	-	-	-	-	C	T
PD7518a	Substitution	1	106456723	106456723	-	-	-	-	-	-	-	G	T
PD7518a	Substitution	1	106943888	106943888	-	-	-	-	-	-	-	G	T
PD7518a	Substitution	1	110441624	110441624	-	-	-	-	-	-	-	G	A
PD7518a	Substitution	1	115079132	115079132	-	-	-	-	-	-	-	A	T
PD7518a	Substitution	1	115947820	115947820	-	-	-	-	-	-	-	G	A
PD7518a	Substitution	1	119897531	119897531	-	-	-	-	-	-	-	A	T
PD7518a	Substitution	1	119954550	119954550	AL121995.1	ENST00000506663	Intronic	-	-	-	-	G	A
PD7518a	Substitution	1	164657755	164657755	PBX1	CCDS1246.1	Intronic	-	-	-	-	C	T
PD7518a	Substitution	1	173990295	173990295	-	-	-	-	-	-	-	G	T
PD7518a	Substitution	1	174810710	174810710	RABGAP1L	CCDS1314.1	Intronic	-	-	-	-	G	A
PD7518a	Substitution	1	177880909	177880909	-	-	-	-	-	-	-	G	A
PD7518a	Substitution	1	182306538	182306538	-	-	-	-	-	-	-	T	C
PD7518a	Substitution	1	186040705	186040705	HMCN1	CCDS30956.1	Intronic	-	-	-	-	C	A
PD7518a	Substitution	1	194330552	194330552	-	-	-	-	-	-	-	G	C
PD7518a	Substitution	1	200682220	200682220	-	-	-	-	-	-	-	G	A
PD7518a	Substitution	1	202626187	202626187	SYT2	CCDS1427.1	Intronic	-	-	-	-	T	C
PD7518a	Substitution	1	210889506	210889506	KCNH1	CCDS31015.1	Intronic	-	-	-	-	C	T
PD7518a	Substitution	1	216840477	216840477	ESRRG	CCDS1517.1	Intronic	-	-	-	-	G	A
PD7518a	Substitution	1	221633218	221633218	-	-	-	-	-	-	-	T	A
PD7518a	Substitution	1	225734622	225734622	ENAH	CCDS31041.1	Intronic	-	-	-	-	G	C
PD7518a	Substitution	1	226252162	226252162	H3F3A	CCDS1550.1	c.110A>T	p.K37M	Missense	-	-	A	T
PD7518a	Substitution	1	230394088	230394088	GALNT2	CCDS1582.1	Intronic	-	-	-	-	G	C
PD7518a	Substitution	1	232410650	232410650	-	-	-	-	-	-	-	G	A
PD7518a	Substitution	1	237733418	237733418	RYR2	ENST00000366574	Intronic	-	-	-	-	T	C
PD7518a	Substitution	1	238255234	238255234	-	-	-	-	-	-	-	G	A
PD7518a	Substitution	1	238933935	238933935	-	-	-	-	-	-	-	T	A
PD7518a	Substitution	1	240599269	240599269	FMN2	CCDS31069.2	Intronic	-	-	-	-	A	T
PD7518a	Substitution	1	246095378	246095378	SMYD3	CCDS31083.1	Intronic	-	-	-	-	G	A
PD7518a	Substitution	1	247990408	247990408	-	-	-	-	-	-	-	G	C
PD7518a	Substitution	2	2636847	2636847	-	-	-	-	-	-	-	A	T
PD7518a	Substitution	2	3113392	3113392	-	-	-	-	-	-	-	G	A
PD7518a	Substitution	2	3125339	3125339	-	-	-	-	-	-	-	G	A
PD7518a	Substitution	2	15394742	15394742	NBAS	CCDS1685.1	Intronic	-	-	-	-	T	C
PD7518a	Substitution	2	16919579	16919579	-	-	-	-	-	-	-	A	T
PD7518a	Substitution	2	19403690	19403690	-	-	-	-	-	-	-	C	T
PD7518a	Substitution	2	23129588	23129588	-	-	-	-	-	-	-	C	T
PD7518a	Substitution	2	24515088	24515088	ITSN2	CCDS1710.2	Intronic	-	-	-	-	G	A
PD7518a	Substitution	2	36615446	36615446	CRIM1	CCDS1783.1	Intronic	-	-	-	-	A	T
PD7518a	Substitution	2	41728790	41728790	-	-	-	-	-	-	-	A	T
PD7518a	Substitution	2	51611986	51611986	-	-	-	-	-	-	-	C	A
PD7518a	Substitution	2	54373842	54373842	ACYP2	CCDS1850.1	Intronic	-	-	-	-	G	A
PD7518a	Indel	2	56181722	56181722	-	-	-	-	-	-	-	-	-
PD7518a	Substitution	2	73226833	73226833	SFXN5	CCDS1922.1	Intronic	-	-	-	-	A	G
PD7518a	Substitution	2	73246789	73246789	SFXN5	CCDS1922.1	Intronic	-	-	-	-	C	T
PD7518a	Substitution	2	76627412	76627412	-	-	-	-	-	-	-	T	A
PD7518a	Substitution	2	76627413	76627413	-	-	-	-	-	-	-	T	A
PD7518a	Substitution	2	78584122	78584122	-	-	-	-	-	-	-	C	T
PD7518a	Substitution	2	78806728	78806728	-	-	-	-	-	-	-	C	A
PD7518a	Substitution	2	79266941	79266941	-	-	-	-	-	-	-	C	G
PD7518a	Substitution	2	83086378	83086378	-	-	-	-	-	-	-	G	T
PD7518a	Substitution	2	85667088	85667088	-	-	-	-	-	-	-	C	T
PD7518a	Substitution	2	102809717	102809717	IL1RL2	CCDS2056.1	Intronic	-	-	-	-	T	G
PD7518a	Substitution	2	113232076	113232076	-	-	-	-	-	-	-	G	T
PD7518a	Substitution	2	116859962	116859962	-	-	-	-	-	-	-	C	A
PD7518a	Substitution	2	117443968	117443968	-	-	-	-	-	-	-	T	A
PD7518a	Substitution	2	118203193	118203193	-	-	-	-	-	-	-	A	G
PD7518a	Substitution	2	123290967	123290967	-	-	-	-	-	-	-	A	T
PD7518a	Substitution	2	126501731	126501731	-	-	-	-	-	-	-	G	T
PD7518a	Substitution	2	129773187	129773187	-	-	-	-	-	-	-	C	A
PD7518a	Substitution	2	133302125	133302125	GPR39	CCDS2170.1	Intronic	-	-	-	-	C	T
PD7518a	Substitution	2	141466602	141466602	LRP1B	CCDS2182.1	Intronic	-	-	-	-	G	T
PD7518a	Substitution	2	141539094	141539094	LRP1B	CCDS2182.1	Intronic	-	-	-	-	G	A
PD7518a	Substitution	2	143724220	143724220	KYNU	CCDS2183.1	Intronic	-	-	-	-	T	C
PD7518a	Substitution	2	144102969	144102969	ARHGAP15	CCDS2184.1	Intronic	-	-	-	-	C	A
PD7518a	Substitution	2	144315256	144315256	ARHGAP15	CCDS2184.1	Intronic	-	-	-	-	G	T
PD7518a	Substitution	2	147555440	147555440	-	-	-	-	-	-	-	C	A
PD7518a	Substitution	2	153377032	153377032	FMNL2	CCDS46429.1	Intronic	-	-	-	-	C	A
PD7518a	Substitution	2	154565257	154565257	-	-	-	-	-	-	-	T	G
PD7518a	Substitution	2	155336026	155336026	-	-	-	-	-	-	-	T	A
PD7518a	Substitution	2	155589187	155589187	KCNJ3	CCDS2200.1	Intronic	-	-	-	-	C	T
PD7518a	Substitution	2	156007974	156007974	-	-	-	-	-	-	-	T	C
PD7518a	Substitution	2	167919241	167919241	XIRP2	CCDS42769.1	Intronic	-	-	-	-	G	A

PD7518a	Substitution	7	17568985	17568985	-	-	-	-	-	-	C	T
PD7518a	Substitution	7	18446458	18446458	HDAC9	ENST00000433709	Intronic	-	-	-	G	G
PD7518a	Substitution	7	22129249	22129249	-	-	-	-	-	-	A	T
PD7518a	Substitution	7	23239402	23239402	NUPL2	CCDS5379.1	Intronic	-	-	-	G	T
PD7518a	Substitution	7	23614785	23614785	-	-	-	-	-	-	A	C
PD7518a	Substitution	7	26120939	26120939	-	-	-	-	-	-	G	A
PD7518a	Substitution	7	30434991	30434991	AC006978.1	ENST00000507825	Intronic	-	-	-	G	T
PD7518a	Substitution	7	30599128	30599128	AC006978.1	ENST00000507825	Intronic	-	-	-	C	T
PD7518a	Substitution	7	32152003	32152003	PDE1C	ENST00000396193	Intronic	-	-	-	G	T
PD7518a	Substitution	7	34692113	34692113	ENSG00000214841	ENST00000399077	Intronic	-	-	-	G	A
PD7518a	Substitution	7	39866903	39866903	-	-	-	-	-	-	A	C
PD7518a	Substitution	7	44697555	44697555	OGDH	CCDS34627.1	Intronic	-	-	-	G	A
PD7518a	Substitution	7	54042815	54042815	-	-	-	-	-	-	C	A
PD7518a	Substitution	7	54511601	54511601	-	-	-	-	-	-	G	A
PD7518a	Substitution	7	54621001	54621001	VSTM2A	CCDS5512.2	Intronic	-	-	-	C	G
PD7518a	Substitution	7	63247590	63247590	-	-	-	-	-	-	A	T
PD7518a	Substitution	7	64796703	64796703	-	-	-	-	-	-	G	A
PD7518a	Substitution	7	65909800	65909800	AC008267.2	ENST00000418858	Intronic	-	-	-	T	G
PD7518a	Substitution	7	67455175	67455175	-	-	-	-	-	-	T	C
PD7518a	Substitution	7	81238309	81238309	-	-	-	-	-	-	C	T
PD7518a	Substitution	7	84929097	84929097	-	-	-	-	-	-	A	G
PD7518a	Substitution	7	85774577	85774577	-	-	-	-	-	-	C	T
PD7518a	Indel	7	86425546	86425546	-	-	-	-	-	-	-	-
PD7518a	Substitution	7	88759210	88759210	ZNF804B	CCDS5613.1	Intronic	-	-	-	T	C
PD7518a	Substitution	7	88978284	88978284	-	-	-	-	-	-	G	A
PD7518a	Substitution	7	89192104	89192104	-	-	-	-	-	-	T	G
PD7518a	Substitution	7	106309875	106309875	-	-	-	-	-	-	T	C
PD7518a	Substitution	7	106350236	106350236	-	-	-	-	-	-	C	G
PD7518a	Indel	7	119292095	119292095	-	-	-	-	-	-	-	-
PD7518a	Substitution	7	119923938	119923938	KCND2	CCDS5776.1	Intronic	-	-	-	C	T
PD7518a	Substitution	7	132305893	132305893	PLXNA4	CCDS43646.1	Intronic	-	-	-	C	T
PD7518a	Substitution	7	132958503	132958503	EXOC4	CCDS5829.1	Intronic	-	-	-	T	A
PD7518a	Substitution	7	133542809	133542809	EXOC4	CCDS5829.1	Intronic	-	-	-	C	A
PD7518a	Substitution	7	139735187	139735187	PARP12	CCDS5857.1	Intronic	-	-	-	A	C
PD7518a	Substitution	7	142686178	142686178	-	-	-	-	-	-	C	T
PD7518a	Substitution	7	145980462	145980462	CNTNAP2	CCDS5889.1	Intronic	-	-	-	G	A
PD7518a	Substitution	7	146775288	146775288	CNTNAP2	CCDS5889.1	Intronic	-	-	-	T	G
PD7518a	Indel	7	153981506	153981506	-	-	-	-	-	-	-	-
PD7518a	Substitution	8	1613178	1613178	DLGAP2	CCDS47760.1	Intronic	-	-	-	T	A
PD7518a	Substitution	8	5256010	5256010	-	-	-	-	-	-	C	A
PD7518a	Substitution	8	5841860	5841860	-	-	-	-	-	-	C	T
PD7518a	Substitution	8	6788232	6788232	-	-	-	-	-	-	G	A
PD7518a	Substitution	8	8828675	8828675	-	-	-	-	-	-	C	T
PD7518a	Substitution	8	11562660	11562660	GATA4	CCDS5983.1	Intronic	-	-	-	G	T
PD7518a	Substitution	8	15660796	15660796	-	-	-	-	-	-	T	A
PD7518a	Substitution	8	15797443	15797443	-	-	-	-	-	-	A	T
PD7518a	Substitution	8	16587661	16587661	-	-	-	-	-	-	G	A
PD7518a	Substitution	8	19110739	19110739	-	-	-	-	-	-	C	A
PD7518a	Substitution	8	21219489	21219489	-	-	-	-	-	-	G	A
PD7518a	Substitution	8	28578003	28578003	EXTL3	CCDS6070.1	Intronic	-	-	-	G	T
PD7518a	Substitution	8	31531994	31531994	NRG1	CCDS47836.1	-	-	-	-	T	A
PD7518a	Substitution	8	42716894	42716894	RNF170	CCDS6138.1	c.501C>T	p.P167P	Silent	-	G	A
PD7518a	Substitution	8	52434397	52434397	PXNDL	CCDS47855.1	Intronic	-	-	-	C	T
PD7518a	Substitution	8	5526257	5526257	RP1	ENST00000427058	Intronic	-	-	-	G	A
PD7518a	Substitution	8	56408667	56408667	KKR4	CCDS34893.1	Intronic	-	-	-	G	T
PD7518a	Substitution	8	57775660	57775660	-	-	-	-	-	-	T	G
PD7518a	Substitution	8	60228565	60228565	-	-	-	-	-	-	T	G
PD7518a	Substitution	8	60626440	60626440	-	-	-	-	-	-	C	T
PD7518a	Substitution	8	63376597	63376597	-	-	-	-	-	-	C	T
PD7518a	Substitution	8	64649937	64649937	-	-	-	-	-	-	G	A
PD7518a	Substitution	8	66453721	66453721	-	-	-	-	-	-	C	A
PD7518a	Substitution	8	67683440	67683440	SGK3	CCDS6195.1	Intronic	-	-	-	T	C
PD7518a	Substitution	8	69386262	69386262	C8orf34	CCDS6203.1	Intronic	-	-	-	C	T
PD7518a	Substitution	8	73579956	73579956	KCNB2	CCDS6209.1	Intronic	-	-	-	T	C
PD7518a	Substitution	8	73579958	73579958	KCNB2	CCDS6209.1	Intronic	-	-	-	C	A
PD7518a	Substitution	8	77444507	77444507	-	-	-	-	-	-	T	G
PD7518a	Substitution	8	80080529	80080529	-	-	-	-	-	-	G	A
PD7518a	Substitution	8	80452596	80452596	-	-	-	-	-	-	G	C
PD7518a	Substitution	8	80490754	80490754	-	-	-	-	-	-	C	T
PD7518a	Substitution	8	80512170	80512170	-	-	-	-	-	-	C	T
PD7518a	Substitution	8	84239226	84239226	-	-	-	-	-	-	A	T
PD7518a	Substitution	8	84239227	84239227	-	-	-	-	-	-	G	T
PD7518a	Substitution	8	84854571	84854571	-	-	-	-	-	-	A	C
PD7518a	Substitution	8	85310996	85310996	-	-	-	-	-	-	G	T
PD7518a	Substitution	8	89831076	89831076	-	-	-	-	-	-	C	T
PD7518a	Substitution	8	92481031	92481031	-	-	-	-	-	-	G	A
PD7518a	Substitution	8	92504210	92504210	-	-	-	-	-	-	C	G
PD7518a	Substitution	8	97547405	97547405	SDC2	CCDS6272.1	Intronic	-	-	-	T	G
PD7518a	Substitution	8	106566593	106566593	ZPPM2	CCDS47908.1	Intronic	-	-	-	T	A
PD7518a	Substitution	8	107302014	107302014	OXR1	CCDS47909.1	Intronic	-	-	-	A	T
PD7518a	Substitution	8	111247850	111247850	-	-	-	-	-	-	T	A
PD7518a	Substitution	8	113573251	113573251	CSMD3	CCDS6315.1	Intronic	-	-	-	T	A
PD7518a	Substitution	8	114560446	114560446	-	-	-	-	-	-	T	C
PD7518a	Substitution	8	114692476	114692476	-	-	-	-	-	-	C	A
PD7518a	Substitution	8	118504558	118504558	-	-	-	-	-	-	C	T
PD7518a	Substitution	8	123780170	123780170	-	-	-	-	-	-	C	T
PD7518a	Substitution	8	124751943	124751943	-	-	-	-	-	-	C	T
PD7518a	Substitution	8	125586245	125586245	MTSS1	CCDS6353.1	Intronic	-	-	-	T	G
PD7518a	Substitution	8	130701173	130701173	-	-	-	-	-	-	T	A
PD7518a	Substitution	8	131967172	131967172	ADCY8	CCDS6363.1	Intronic	-	-	-	A	G
PD7518a	Substitution	8	132219045	132219045	-	-	-	-	-	-	C	G
PD7518a	Substitution	8	132950465	132950465	EFR3A	CCDS34942.2	Intronic	-	-	-	A	T
PD7518a	Substitution	8	135001143	135001143	-	-	-	-	-	-	C	A
PD7518a	Substitution	8	135497383	135497383	ZFAT	CCDS47924.1	Intronic	-	-	-	A	C
PD7518a	Substitution	8	136246232	136246232	-	-	-	-	-	-	G	T
PD7518a	Substitution	8	137912595	137912595	-	-	-	-	-	-	C	G
PD7518a	Substitution	9	8874663	8874663	PTPRD	CCDS43786.1	Intronic	-	-	-	C	T
PD7518a	Substitution	9	10329668	10329668	PTPRD	CCDS43786.1	Intronic	-	-	-	G	T
PD7518a	Substitution	9	10802072	10802072	-	-	-	-	-	-	A	T
PD7518a	Substitution	9	14967699	14967699	-	-	-	-	-	-	G	A
PD7518a	Substitution	9	21585123	21585123	-	-	-	-	-	-	A	G
PD7518a	Substitution	9	23117155	23117155	-	-	-	-	-	-	A	C
PD7518a	Indel	9	24274329	24274329	-	-	-	-	-	-	-	-
PD7518a	Substitution	9	28595892	28595892	LINGO2	CCDS6524.1	Intronic	-	-	-	T	A
PD7518a	Substitution	9	36505399	36505399	-	-	-	-	-	-	C	A
PD7518a	Substitution	9	38640900	38640900	-	-	-	-	-	-	G	A
PD7518a	Substitution	9	66257084	66257084	-	-	-	-	-	-	A	T
PD7518a	Substitution	9	81008339	81008339	-	-	-	-	-	-	G	A
PD7518a	Substitution	9	84315345	84315345	-	-	-	-	-	-	G	A
PD7518a	Substitution	9	87769910	87769910	-	-	-	-	-	-	G	A
PD7518a	Substitution	9	101707408	101707408	COL15A1	CCDS35081.1	Intronic	-	-	-	T	C

PD7518a	Substitution	9	104019053	104019053	ENSG00000148123	CCDS6751.1	Intronic	-	-	G	A
PD7518a	Substitution	9	104096874	104096874	-	-	-	-	-	G	A
PD7518a	Substitution	9	104640077	104640077	-	-	-	-	-	G	T
PD7518a	Substitution	9	108587973	108587973	-	-	-	-	-	A	G
PD7518a	Substitution	9	112923479	112923479	PALM2-AKAP2	CCDS35100.1	Intronic	-	-	A	G
PD7518a	Substitution	9	120471430	120471430	TLR4	CCDS6818.1	Intronic	-	-	T	A
PD7518a	Substitution	9	128478338	128478338	-	-	-	-	-	A	T
PD7518a	Substitution	10	1862759	1862759	-	-	-	-	-	T	C
PD7518a	Substitution	10	27575905	27575905	-	-	-	-	-	A	T
PD7518a	Substitution	10	43224470	43224470	ENSG00000230425	ENST00000453416	Intronic	-	-	G	A
PD7518a	Substitution	10	43278845	43278845	BMS1	CCDS7199.1	Intronic	-	-	T	G
PD7518a	Substitution	10	47372679	47372679	-	-	-	-	-	C	T
PD7518a	Substitution	10	49989405	49989405	WDFY4	CCDS44385.1	Intronic	-	-	G	A
PD7518a	Substitution	10	53634911	53634911	PRKG1	CCDS7244.1	Intronic	-	-	A	G
PD7518a	Substitution	10	56618489	56618489	PCDH15	ENST00000373957	Intronic	-	-	T	A
PD7518a	Substitution	10	56809327	56809327	PCDH15	ENST00000373957	Intronic	-	-	T	A
PD7518a	Substitution	10	57800651	57800651	-	-	-	-	-	G	A
PD7518a	Substitution	10	59280027	59280027	-	-	-	-	-	A	T
PD7518a	Indel	10	64455111	64455111	-	-	-	-	-	-	-
PD7518a	Substitution	10	71366553	71366553	-	-	-	-	-	G	A
PD7518a	Indel	10	79070390	79070390	-	-	-	-	-	-	-
PD7518a	Substitution	10	83410439	83410439	-	-	-	-	-	T	G
PD7518a	Substitution	10	85314027	85314027	-	-	-	-	-	T	A
PD7518a	Substitution	10	87073213	87073213	-	-	-	-	-	A	T
PD7518a	Substitution	10	87602998	87602998	GRID1	CCDS31236.1	Intronic	-	-	A	G
PD7518a	Substitution	10	96916454	96916454	-	-	-	-	-	C	G
PD7518a	Substitution	10	108486559	108486559	SORCS1	CCDS7559.1	Intronic	-	-	T	G
PD7518a	Substitution	10	120752940	120752940	-	-	-	-	-	C	T
PD7518a	Substitution	10	122966810	122966810	-	-	-	-	-	A	C
PD7518a	Substitution	11	558294	558294	C11orf35	CCDS7701.1	Intronic	-	-	G	T
PD7518a	Substitution	11	5952039	5952039	TRIM5	ENST00000412903	Intronic	-	-	C	T
PD7518a	Substitution	11	13556866	13556866	-	-	-	-	-	G	A
PD7518a	Substitution	11	15827988	15827988	-	-	-	-	-	A	G
PD7518a	Substitution	11	16437222	16437222	SOX6	CCDS7821.1	Intronic	-	-	A	T
PD7518a	Substitution	11	23887913	23887913	-	-	-	-	-	A	G
PD7518a	Substitution	11	24497601	24497601	-	-	-	-	-	C	T
PD7518a	Substitution	11	28617392	28617392	-	-	-	-	-	C	T
PD7518a	Substitution	11	36245189	36245189	LDLRAD3	CCDS31462.1	Intronic	-	-	G	C
PD7518a	Substitution	11	39755010	39755010	-	-	-	-	-	C	A
PD7518a	Substitution	11	40619450	40619450	-	-	-	-	-	G	A
PD7518a	Substitution	11	57137781	57137781	-	-	-	-	-	C	T
PD7518a	Substitution	11	58304926	58304926	LPXN	CCDS7969.1	Intronic	-	-	T	C
PD7518a	Substitution	11	59394708	59394708	-	-	-	-	-	T	A
PD7518a	Substitution	11	62369180	62369180	MTA2	CCDS8022.1	Non-coding	r.124c>u	5prime UTR	G	A
PD7518a	Substitution	11	68732339	68732339	-	-	-	-	-	G	A
PD7518a	Substitution	11	69373464	69373464	-	-	-	-	-	G	T
PD7518a	Substitution	11	69446778	69446778	-	-	-	-	-	G	T
PD7518a	Substitution	11	71964352	71964352	-	-	-	-	-	C	T
PD7518a	Substitution	11	78840211	78840211	ODZ4	CCDS44688.1	Intronic	-	-	G	A
PD7518a	Substitution	11	82101986	82101986	AP002802.1	ENST00000500502	Intronic	-	-	C	A
PD7518a	Substitution	11	85938636	85938636	-	-	-	-	-	C	T
PD7518a	Substitution	11	86266351	86266351	ME3	CCDS8277.1	Intronic	-	-	G	C
PD7518a	Substitution	11	88611643	88611643	GRM5	CCDS44694.1	Intronic	-	-	C	A
PD7518a	Substitution	11	88645292	88645292	GRM5	CCDS44694.1	Intronic	-	-	G	A
PD7518a	Substitution	11	88645293	88645293	GRM5	CCDS44694.1	Intronic	-	-	A	T
PD7518a	Substitution	11	91506468	91506468	-	-	-	-	-	G	A
PD7518a	Substitution	11	95580307	95580307	MTMR2	CCDS8305.1	Intronic	-	-	C	T
PD7518a	Indel	11	99787612	99787612	-	-	-	-	-	C	T
PD7518a	Substitution	11	100104730	100104730	CNTN5	ENST00000279463	Intronic	-	-	C	T
PD7518a	Substitution	11	101422772	101422772	TRPC6	CCDS8311.1	Intronic	-	-	T	C
PD7518a	Substitution	11	102637617	102637617	-	-	-	-	-	A	T
PD7518a	Substitution	11	105718382	105718382	GRIA4	CCDS41706.1	Intronic	-	-	G	T
PD7518a	Substitution	11	111386590	111386590	C11orf88	CCDS41712.1	Intronic	-	-	C	G
PD7518a	Substitution	11	116335101	116335101	-	-	-	-	-	C	T
PD7518a	Substitution	11	118142597	118142597	-	-	-	-	-	G	A
PD7518a	Substitution	11	127115255	127115255	-	-	-	-	-	T	A
PD7518a	Substitution	11	127602825	127602825	-	-	-	-	-	T	C
PD7518a	Substitution	11	128746717	128746717	-	-	-	-	-	C	A
PD7518a	Substitution	11	128784691	128784691	KCNJ5	CCDS8479.1	Intronic	-	-	C	T
PD7518a	Substitution	12	6340277	6340277	CD9	CCDS8540.1	Intronic	-	-	C	T
PD7518a	Substitution	12	17802752	17802752	-	-	-	-	-	G	A
PD7518a	Substitution	12	17968515	17968515	-	-	-	-	-	G	T
PD7518a	Substitution	12	22064283	22064283	ABCC9	CCDS8693.1	Intronic	-	-	C	A
PD7518a	Substitution	12	22981303	22981303	-	-	-	-	-	A	C
PD7518a	Substitution	12	24015875	24015875	SOX5	CCDS8699.1	Intronic	-	-	T	C
PD7518a	Indel	12	33193255	33193255	-	-	-	-	-	-	-
PD7518a	Substitution	12	38866930	38866930	-	-	-	-	-	C	G
PD7518a	Substitution	12	43405652	43405652	-	-	-	-	-	A	G
PD7518a	Substitution	12	58930149	58930149	-	-	-	-	-	C	A
PD7518a	Substitution	12	62417702	62417702	-	-	-	-	-	T	C
PD7518a	Substitution	12	65922939	65922939	-	-	-	-	-	T	A
PD7518a	Substitution	12	65922941	65922941	-	-	-	-	-	A	C
PD7518a	Substitution	12	68532496	68532496	-	-	-	-	-	A	C
PD7518a	Substitution	12	68836520	68836520	-	-	-	-	-	G	T
PD7518a	Substitution	12	78239296	78239296	NAV3	CCDS41815.1	Intronic	-	-	C	T
PD7518a	Substitution	12	87313150	87313150	-	-	-	-	-	A	C
PD7518a	Substitution	12	88260595	88260595	-	-	-	-	-	G	A
PD7518a	Substitution	12	92561711	92561711	AC025164.1	ENST00000499685	Intronic	-	-	T	G
PD7518a	Substitution	12	96811927	96811927	-	-	-	-	-	G	T
PD7518a	Substitution	12	111716203	111716203	CUX2	CCDS41837.1	Intronic	-	-	C	T
PD7518a	Substitution	12	115256535	115256535	-	-	-	-	-	G	A
PD7518a	Substitution	12	121440129	121440129	HNF1A	CCDS9209.1	Non-coding	r.3256c>a	3prime UTR	C	A
PD7518a	Substitution	12	124302890	124302890	DNAH10	CCDS9255.2	Intronic	-	-	A	T
PD7518a	Substitution	12	127562229	127562229	-	-	-	-	-	C	A
PD7518a	Substitution	12	129744171	129744171	TMEM132D	CCDS9266.1	Intronic	-	-	G	A
PD7518a	Substitution	13	31616010	31616010	-	-	-	-	-	C	A
PD7518a	Substitution	13	35372539	35372539	-	-	-	-	-	T	C
PD7518a	Substitution	13	36143435	36143435	NBEA	CCDS45026.1	Intronic	-	-	T	C
PD7518a	Substitution	13	37800686	37800686	-	-	-	-	-	A	G
PD7518a	Substitution	13	46420306	46420306	SLAH3	CCDS41883.1	Intronic	-	-	C	T
PD7518a	Substitution	13	51600699	51600699	GUCY1B2	ENST00000389600	Intronic	-	-	C	A
PD7518a	Indel	13	62042220	62042222	-	-	-	-	-	-	-
PD7518a	Substitution	13	67848124	67848124	-	-	-	-	-	G	A
PD7518a	Substitution	13	68644081	68644081	-	-	-	-	-	G	T
PD7518a	Substitution	13	70824908	70824908	-	-	-	-	-	G	T
PD7518a	Indel	13	75919854	75919854	-	-	-	-	-	-	-
PD7518a	Indel	13	77282714	77282715	-	-	-	-	-	-	-
PD7518a	Substitution	13	81820452	81820452	-	-	-	-	-	G	T
PD7518a	Substitution	13	82298934	82298934	-	-	-	-	-	C	T
PD7518a	Substitution	13	82960012	82960012	-	-	-	-	-	T	A
PD7518a	Substitution	13	84603994	84603994	-	-	-	-	-	C	A

PD7518a	Substitution	21	42178470	42178470	DSCAM	CCDS42929.1	Intronic	-	-	-	C	T
PD7518a	Substitution	21	46117833	46117833	KRTAP10-12	CCDS42967.1	c.717A>T	p.T239T	Silent	-	A	T
PD7518a	Substitution	21	46771074	46771074	-	-	-	-	-	-	C	T
PD7518a	Substitution	22	17809977	17809977	-	-	-	-	-	-	A	G
PD7518a	Substitution	22	34479208	34479208	-	-	-	-	-	-	G	A
PD7518a	Substitution	22	41480741	41480741	-	-	-	-	-	-	A	G
PD7518a	Substitution	X	5152742	5152742	-	-	-	-	-	-	C	T
PD7518a	Substitution	X	27057909	27057909	-	-	-	-	-	-	G	A
PD7518a	Substitution	X	32323194	32323194	DMD	CCDS14233.1	Intronic	-	-	-	C	T
PD7518a	Substitution	X	56038345	56038345	-	-	-	-	-	-	G	T
PD7518a	Substitution	X	66433317	66433317	-	-	-	-	-	-	C	T
PD7518a	Substitution	X	81375578	81375578	-	-	-	-	-	-	G	T
PD7518a	Substitution	X	86416174	86416174	-	-	-	-	-	-	C	T
PD7518a	Substitution	X	90870992	90870992	-	-	-	-	-	-	G	T
PD7518a	Substitution	X	96190222	96190222	DIAPH2	CCDS14467.1	Intronic	-	-	-	C	T
PD7518a	Substitution	X	97919050	97919050	-	-	-	-	-	-	C	T
PD7518a	Substitution	X	99534783	99534783	-	-	-	-	-	-	G	T
PD7518a	Substitution	X	102420684	102420684	ENSG00000226623	ENST000000416953	Intronic	-	-	-	C	G
PD7518a	Substitution	X	105166263	105166263	-	-	-	-	-	-	G	A
PD7518a	Substitution	X	116326051	116326051	-	-	-	-	-	-	C	A
PD7518a	Substitution	X	116725869	116725869	-	-	-	-	-	-	C	A
PD7518a	Substitution	X	120504471	120504471	-	-	-	-	-	-	T	G
PD7518a	Substitution	X	125155759	125155759	-	-	-	-	-	-	T	C
PD7518a	Substitution	X	126370654	126370654	-	-	-	-	-	-	G	T
PD7518a	Substitution	X	127317358	127317358	-	-	-	-	-	-	A	G
PD7518a	Substitution	X	133353503	133353503	-	-	-	-	-	-	G	T
PD7518a	Substitution	X	138238584	138238584	FGF13	ENST00000436198	Intronic	-	-	-	C	T
PD7518a	Substitution	X	145078987	145078987	-	-	-	-	-	-	T	A
PD7518a	Substitution	Y	9515319	9515319	-	-	-	-	-	-	G	A
PD7518a	Substitution	Y	13426248	13426248	-	-	-	-	-	-	G	A
PD7518a	Substitution	Y	17701139	17701139	-	-	-	-	-	-	G	A
PD7518a	Substitution	Y	22985124	22985124	-	-	-	-	-	-	A	G
PD7520a	Indel	1	18269611	18269611	-	-	-	-	-	-	-	-
PD7520a	Substitution	1	33449497	33449497	-	-	-	-	-	-	G	A
PD7520a	Substitution	1	50410578	50410578	AGBL4	CCDS44137.1	Intronic	-	-	-	G	C
PD7520a	Substitution	1	61183814	61183814	-	-	-	-	-	-	G	A
PD7520a	Substitution	1	61466615	61466615	NFIA	ENST00000371191	Intronic	-	-	-	T	C
PD7520a	Substitution	1	66158451	66158451	-	-	-	-	-	-	G	A
PD7520a	Substitution	1	70073433	70073433	LRRC7	ENST00000310961	Intronic	-	-	-	G	C
PD7520a	Substitution	1	72419795	72419795	NEGR1	CCDS661.1	Intronic	-	-	-	G	C
PD7520a	Substitution	1	74952791	74952791	TNNI3K	CCDS44161.1	Intronic	-	-	-	C	T
PD7520a	Substitution	1	75869720	75869720	SLC44A5	CCDS667.1	Intronic	-	-	-	A	C
PD7520a	Substitution	1	78797102	78797102	PTGFR	CCDS686.1	Intronic	-	-	-	A	T
PD7520a	Substitution	1	78851201	78851201	PTGFR	CCDS686.1	Intronic	-	-	-	C	T
PD7520a	Substitution	1	83083521	83083521	-	-	-	-	-	-	T	G
PD7520a	Indel	1	85854280	85854281	-	-	-	-	-	-	-	-
PD7520a	Substitution	1	87241541	87241541	-	-	-	-	-	-	C	G
PD7520a	Substitution	1	88165462	88165462	-	-	-	-	-	-	C	A
PD7520a	Substitution	1	89342133	89342133	GTF2B	CCDS715.1	Intronic	-	-	-	T	C
PD7520a	Substitution	1	96929893	96929893	-	-	-	-	-	-	C	T
PD7520a	Substitution	1	97093782	97093782	-	-	-	-	-	-	G	T
PD7520a	Substitution	1	107881698	107881698	NTNG1	CCDS44180.1	Intronic	-	-	-	A	C
PD7520a	Substitution	1	109615056	109615056	TAF13	CCDS30788.1	Intronic	-	-	-	T	A
PD7520a	Substitution	1	109725706	109725706	KIAA1324	CCDS794.1	Intronic	-	-	-	A	G
PD7520a	Substitution	1	110327823	110327823	-	-	-	-	-	-	A	T
PD7520a	Substitution	1	110925668	110925668	SLC16A4	CCDS823.1	Intronic	-	-	-	A	T
PD7520a	Substitution	1	116809378	116809378	-	-	-	-	-	-	C	T
PD7520a	Substitution	1	146963724	146963724	-	-	-	-	-	-	C	G
PD7520a	Substitution	1	152610257	152610257	-	-	-	-	-	-	T	G
PD7520a	Substitution	1	153989157	153989157	NUP210L	CCDS41399.1	Intronic	-	-	-	C	T
PD7520a	Substitution	1	158200986	158200986	-	-	-	-	-	-	C	A
PD7520a	Substitution	1	158212692	158212692	-	-	-	-	-	-	A	G
PD7520a	Substitution	1	159031632	159031632	-	-	-	-	-	-	T	C
PD7520a	Substitution	1	182484961	182484961	-	-	-	-	-	-	G	A
PD7520a	Substitution	1	190063373	190063373	-	-	-	-	-	-	T	A
PD7520a	Indel	1	190311403	190311403	-	-	-	-	-	-	-	-
PD7520a	Substitution	1	194649464	194649464	-	-	-	-	-	-	C	T
PD7520a	Substitution	1	195492670	195492670	-	-	-	-	-	-	T	A
PD7520a	Substitution	1	211186235	211186235	KCNH1	CCDS31015.1	Intronic	-	-	-	G	A
PD7520a	Substitution	1	220566925	220566925	-	-	-	-	-	-	G	T
PD7520a	Substitution	1	228294580	228294580	MRPL55	CCDS44325.1	c.376C>T	p.R126W	Missense	-	G	A
PD7520a	Substitution	1	229146157	229146157	-	-	-	-	-	-	C	A
PD7520a	Substitution	1	232110053	232110053	DISC1	ENST00000439617	Intronic	-	-	-	G	A
PD7520a	Indel	1	236006568	236006581	-	-	-	-	-	-	-	-
PD7520a	Substitution	1	239178503	239178503	-	-	-	-	-	-	T	A
PD7520a	Substitution	1	240765654	240765654	GREM2	CCDS31070.1	Intronic	-	-	-	A	T
PD7520a	Substitution	1	241480364	241480364	RGS7	CCDS31071.1	Intronic	-	-	-	G	C
PD7520a	Substitution	1	244339331	244339331	-	-	-	-	-	-	G	A
PD7520a	Substitution	1	245620949	245620949	KIF26B	CCDS44342.1	Intronic	-	-	-	A	T
PD7520a	Substitution	1	248048554	248048554	-	-	-	-	-	-	G	T
PD7520a	Substitution	1	248319858	248319858	-	-	-	-	-	-	C	T
PD7520a	Substitution	2	969204	969204	SNTG2	CCDS46220.1	Intronic	-	-	-	G	A
PD7520a	Substitution	2	4826902	4826902	-	-	-	-	-	-	A	G
PD7520a	Substitution	2	6833338	6833338	-	-	-	-	-	-	G	A
PD7520a	Substitution	2	15867968	15867968	ENSG00000231031	ENST00000436967	Intronic	-	-	-	C	G
PD7520a	Substitution	2	27639290	27639290	-	-	-	-	-	-	A	G
PD7520a	Substitution	2	32004631	32004631	-	-	-	-	-	-	C	T
PD7520a	Substitution	2	37010588	37010588	VIT	CCDS33180.1	Intronic	-	-	-	C	T
PD7520a	Substitution	2	43920276	43920276	PLEKHH2	CCDS1812.1	Intronic	-	-	-	G	T
PD7520a	Substitution	2	49780038	49780038	-	-	-	-	-	-	G	C
PD7520a	Substitution	2	50528262	50528262	NRXN1	CCDS46282.1	Intronic	-	-	-	A	C
PD7520a	Substitution	2	52451819	52451819	-	-	-	-	-	-	T	A
PD7520a	Substitution	2	57161254	57161254	-	-	-	-	-	-	G	T
PD7520a	Substitution	2	58766246	58766246	-	-	-	-	-	-	A	T
PD7520a	Substitution	2	60805756	60805756	-	-	-	-	-	-	G	T
PD7520a	Substitution	2	75720737	75720737	FAM176A	CCDS1959.1	c.86-2A>G	p.?	Essential Splice	-	T	C
PD7520a	Substitution	2	82892321	82892321	-	-	-	-	-	-	G	C
PD7520a	Substitution	2	84239937	84239937	-	-	-	-	-	-	C	T
PD7520a	Substitution	2	84244722	84244722	-	-	-	-	-	-	A	T
PD7520a	Substitution	2	89362429	89362429	-	-	-	-	-	-	A	T
PD7520a	Substitution	2	95991168	95991168	KCNIP3	CCDS2013.1	Intronic	-	-	-	C	T
PD7520a	Substitution	2	101026187	101026187	CHST10	CCDS2047.1	Intronic	-	-	-	C	T
PD7520a	Substitution	2	124210025	124210025	-	-	-	-	-	-	T	C
PD7520a	Substitution	2	125816882	125816882	-	-	-	-	-	-	G	T
PD7520a	Substitution	2	125882532	125882532	-	-	-	-	-	-	G	T
PD7520a	Substitution	2	129771556	129771556	-	-	-	-	-	-	G	A
PD7520a	Substitution	2	129786132	129786132	-	-	-	-	-	-	G	A
PD7520a	Substitution	2	131455923	131455923	-	-	-	-	-	-	G	T
PD7520a	Substitution	2	134053852	134053852	NCKAP5	CCDS46418.1	Intronic	-	-	-	G	T
PD7520a	Substitution	2	140222239	140222239	-	-	-	-	-	-	T	A
PD7520a	Substitution	2	146315169	146315169	-	-	-	-	-	-	G	T

PD7520a	Substitution	8	65306507	65306507	-	-	-	-	-	-	-	A	T
PD7520a	Substitution	8	72773575	72773575	AC016057.1	ENST00000457356	Intronic	-	-	-	-	A	G
PD7520a	Substitution	8	77366254	77366254	-	-	-	-	-	-	-	G	T
PD7520a	Substitution	8	79323200	79323200	-	-	-	-	-	-	-	C	A
PD7520a	Substitution	8	85372090	85372090	-	-	-	-	-	-	-	C	A
PD7520a	Substitution	8	92630174	92630174	-	-	-	-	-	-	-	C	A
PD7520a	Substitution	8	92934249	92934249	-	-	-	-	-	-	-	A	G
PD7520a	Substitution	8	94475840	94475840	AC011118.2	ENST00000501400	Intronic	-	-	-	-	G	A
PD7520a	Indel	8	97572181	97572181	-	-	-	-	-	-	-	-	-
PD7520a	Substitution	8	108523879	108523879	-	-	-	-	-	-	-	G	A
PD7520a	Substitution	8	108566821	108566821	-	-	-	-	-	-	-	T	G
PD7520a	Substitution	8	111174616	111174616	-	-	-	-	-	-	-	C	A
PD7520a	Substitution	8	111854773	111854773	-	-	-	-	-	-	-	A	T
PD7520a	Substitution	8	112228515	112228515	-	-	-	-	-	-	-	G	C
PD7520a	Substitution	8	112495871	112495871	-	-	-	-	-	-	-	T	C
PD7520a	Substitution	8	115718944	115718944	-	-	-	-	-	-	-	A	G
PD7520a	Substitution	8	115941780	115941780	-	-	-	-	-	-	-	A	G
PD7520a	Substitution	8	120374344	120374344	-	-	-	-	-	-	-	C	A
PD7520a	Substitution	8	125928105	125928105	-	-	-	-	-	-	-	T	C
PD7520a	Substitution	8	129593163	129593163	-	-	-	-	-	-	-	A	G
PD7520a	Substitution	8	132252442	132252442	-	-	-	-	-	-	-	G	C
PD7520a	Substitution	9	8920468	8920468	PTPRD	CCDS43786.1	Intronic	-	-	-	-	C	A
PD7520a	Substitution	9	17628146	17628146	SH3GL2	CCDS6483.1	Intronic	-	-	-	-	C	T
PD7520a	Substitution	9	20758041	20758041	KIAA1797	CCDS34993.1	Intronic	-	-	-	-	G	T
PD7520a	Substitution	9	24180847	24180847	-	-	-	-	-	-	-	A	T
PD7520a	Substitution	9	28454984	28454984	LINGO2	CCDS6524.1	Intronic	-	-	-	-	A	G
PD7520a	Substitution	9	29283581	29283581	-	-	-	-	-	-	-	G	T
PD7520a	Substitution	9	30123869	30123869	-	-	-	-	-	-	-	G	A
PD7520a	Substitution	9	31799590	31799590	-	-	-	-	-	-	-	C	A
PD7520a	Substitution	9	42502400	42502400	-	-	-	-	-	-	-	G	A
PD7520a	Substitution	9	79711100	79711100	-	-	-	-	-	-	-	C	T
PD7520a	Substitution	9	81000595	81000595	-	-	-	-	-	-	-	T	A
PD7520a	Substitution	9	85232832	85232832	-	-	-	-	-	-	-	G	A
PD7520a	Substitution	9	87183686	87183686	-	-	-	-	-	-	-	G	T
PD7520a	Indel	9	88995374	88995374	-	-	-	-	-	-	-	-	-
PD7520a	Substitution	9	97073352	97073352	-	-	-	-	-	-	-	G	C
PD7520a	Substitution	9	97122570	97122570	-	-	-	-	-	-	-	G	T
PD7520a	Substitution	9	116453530	116453530	-	-	-	-	-	-	-	C	A
PD7520a	Substitution	9	118466813	118466813	-	-	-	-	-	-	-	C	T
PD7520a	Substitution	9	128827733	128827733	-	-	-	-	-	-	-	G	A
PD7520a	Substitution	10	2192427	2192427	-	-	-	-	-	-	-	A	T
PD7520a	Substitution	10	2727317	2727317	-	-	-	-	-	-	-	G	T
PD7520a	Substitution	10	6679889	6679889	-	-	-	-	-	-	-	C	A
PD7520a	Substitution	10	8855966	8855966	-	-	-	-	-	-	-	A	C
PD7520a	Substitution	10	8855968	8855968	-	-	-	-	-	-	-	A	C
PD7520a	Substitution	10	9237532	9237532	-	-	-	-	-	-	-	C	T
PD7520a	Substitution	10	10673506	10673506	-	-	-	-	-	-	-	G	C
PD7520a	Substitution	10	13391963	13391963	-	-	-	-	-	-	-	C	G
PD7520a	Substitution	10	14958904	14958904	DCLRE1C	CCDS7105.1	Intronic	-	-	-	-	G	A
PD7520a	Substitution	10	37510983	37510983	ANKRD30A	CCDS7193.1	Intronic	-	-	-	-	C	A
PD7520a	Substitution	10	44584483	44584483	-	-	-	-	-	-	-	G	A
PD7520a	Substitution	10	45270402	45270402	-	-	-	-	-	-	-	T	A
PD7520a	Substitution	10	53779899	53779899	PRKG1	CCDS7244.1	Intronic	-	-	-	-	A	G
PD7520a	Substitution	10	54451452	54451452	-	-	-	-	-	-	-	C	T
PD7520a	Substitution	10	67280178	67280178	-	-	-	-	-	-	-	C	A
PD7520a	Substitution	10	69839264	69839264	-	-	-	-	-	-	-	A	G
PD7520a	Substitution	10	71480342	71480342	-	-	-	-	-	-	-	G	A
PD7520a	Substitution	10	85096111	85096111	-	-	-	-	-	-	-	G	T
PD7520a	Substitution	10	96760738	96760738	-	-	-	-	-	-	-	A	T
PD7520a	Substitution	10	102492235	102492235	-	-	-	-	-	-	-	G	T
PD7520a	Substitution	10	103328307	103328307	-	-	-	-	-	-	-	C	T
PD7520a	Substitution	10	110134963	110134963	-	-	-	-	-	-	-	A	G
PD7520a	Substitution	10	119005576	119005576	SLC18A2	CCDS7599.1	Intronic	-	-	-	-	G	T
PD7520a	Substitution	10	119345621	119345621	-	-	-	-	-	-	-	G	A
PD7520a	Substitution	10	128568216	128568216	-	-	-	-	-	-	-	T	A
PD7520a	Substitution	10	130597349	130597349	-	-	-	-	-	-	-	T	G
PD7520a	Substitution	10	131954929	131954929	GLRX3	CCDS7661.1	Intronic	-	-	-	-	C	G
PD7520a	Substitution	10	132868414	132868414	-	-	-	-	-	-	-	C	T
PD7520a	Substitution	11	7235062	7235062	-	-	-	-	-	-	-	G	A
PD7520a	Substitution	11	11615802	11615802	GALNTL4	CCDS7807.1	Intronic	-	-	-	-	C	G
PD7520a	Substitution	11	21830242	21830242	-	-	-	-	-	-	-	T	G
PD7520a	Substitution	11	22431890	22431890	-	-	-	-	-	-	-	T	A
PD7520a	Substitution	11	25317848	25317848	-	-	-	-	-	-	-	T	A
PD7520a	Substitution	11	38652158	38652158	-	-	-	-	-	-	-	A	T
PD7520a	Substitution	11	43304957	43304957	-	-	-	-	-	-	-	C	G
PD7520a	Substitution	11	47341800	47341800	MADD	CCDS7930.1	Intronic	-	-	-	-	G	A
PD7520a	Substitution	11	49844484	49844484	-	-	-	-	-	-	-	A	T
PD7520a	Substitution	11	58251811	58251811	-	-	-	-	-	-	-	C	T
PD7520a	Substitution	11	63520189	63520189	RTN3	CCDS8050.1	Intronic	-	-	-	-	C	G
PD7520a	Substitution	11	70557569	70557569	SHANK2	ENST00000338508	Intronic	-	-	-	-	G	A
PD7520a	Substitution	11	73701093	73701093	-	-	-	-	-	-	-	C	T
PD7520a	Substitution	11	80827869	80827869	-	-	-	-	-	-	-	T	G
PD7520a	Substitution	11	88945841	88945841	TYR	CCDS8284.1	Intronic	-	-	-	-	G	A
PD7520a	Substitution	11	96639293	96639293	-	-	-	-	-	-	-	G	A
PD7520a	Substitution	11	98742689	98742689	-	-	-	-	-	-	-	G	T
PD7520a	Substitution	11	103374282	103374282	-	-	-	-	-	-	-	A	T
PD7520a	Substitution	11	116091860	116091860	-	-	-	-	-	-	-	C	T
PD7520a	Substitution	11	123431807	123431807	GRAMD1B	ENST00000456860	Intronic	-	-	-	-	G	A
PD7520a	Substitution	11	126446529	126446529	-	-	-	-	-	-	-	C	A
PD7520a	Substitution	11	126950860	126950860	-	-	-	-	-	-	-	T	A
PD7520a	Substitution	11	133114426	133114426	ENSG00000183715	CCDS31722.1	Intronic	-	-	-	-	C	A
PD7520a	Substitution	12	10604233	10604233	KLRC1	CCDS8625.1	Intronic	-	-	-	-	C	T
PD7520a	Substitution	12	12098888	12098888	-	-	-	-	-	-	-	A	C
PD7520a	Substitution	12	13076991	13076991	-	-	-	-	-	-	-	G	A
PD7520a	Substitution	12	16637240	16637240	-	-	-	-	-	-	-	G	T
PD7520a	Substitution	12	18118371	18118371	-	-	-	-	-	-	-	C	A
PD7520a	Substitution	12	30387286	30387286	-	-	-	-	-	-	-	G	T
PD7520a	Substitution	12	31151692	31151692	-	-	-	-	-	-	-	G	A
PD7520a	Substitution	12	39191645	39191645	CPNE8	CCDS8733.1	Intronic	-	-	-	-	A	G
PD7520a	Substitution	12	53951167	53951167	ATF7	CCDS44905.1	Intronic	-	-	-	-	G	A
PD7520a	Substitution	12	70824102	70824102	KCNMB4	CCDS8997.1	Intronic	-	-	-	-	C	G
PD7520a	Substitution	12	74404136	74404136	-	-	-	-	-	-	-	T	C
PD7520a	Substitution	12	75218528	75218528	-	-	-	-	-	-	-	G	A
PD7520a	Substitution	12	77363106	77363106	-	-	-	-	-	-	-	C	G
PD7520a	Substitution	12	81914214	81914214	PPFIA2	ENST00000443686	Intronic	-	-	-	-	A	G
PD7520a	Substitution	12	85363694	85363694	-	-	-	-	-	-	-	A	T
PD7520a	Substitution	12	88038531	88038531	-	-	-	-	-	-	-	T	A
PD7520a	Substitution	12	88306357	88306357	-	-	-	-	-	-	-	G	A
PD7520a	Substitution	12	89318570	89318570	-	-	-	-	-	-	-	C	A
PD7520a	Substitution	12	97331521	97331521	NEDD1	CCDS9063.1	Intronic	-	-	-	-	T	T
PD7520a	Substitution	12	118065277	118065277	KSR2	ENST00000425217	Intronic	-	-	-	-	C	T

PD7520a	Substitution	21	41290227	41290227	PCP4	CCDS33563.1	Intronic	-	-	-	G	A
PD7520a	Substitution	21	46191773	46191773	UBE2G2	CCDS13714.1	Intronic	-	-	-	T	C
PD7520a	Substitution	22	17345613	17345613	-	-	-	-	-	-	G	A
PD7520a	Substitution	22	49495358	49495358	-	-	-	-	-	-	A	G
PD7520a	Substitution	22	50010352	50010352	-	-	-	-	-	-	C	T
PD7520a	Substitution	X	19454461	19454461	MAP3K15	CCDS35212.1	Intronic	-	-	-	C	T
PD7520a	Substitution	X	20652763	20652763	-	-	-	-	-	-	C	A
PD7520a	Substitution	X	23446859	23446859	-	-	-	-	-	-	A	G
PD7520a	Substitution	X	32809368	32809368	DMD	CCDS14233.1	Intronic	-	-	-	T	G
PD7520a	Substitution	X	41822521	41822521	-	-	-	-	-	-	C	T
PD7520a	Substitution	X	53797712	53797712	-	-	-	-	-	-	G	A
PD7520a	Substitution	X	66030758	66030758	-	-	-	-	-	-	C	T
PD7520a	Substitution	X	81759283	81759283	-	-	-	-	-	-	G	A
PD7520a	Substitution	X	86409990	86409990	-	-	-	-	-	-	C	G
PD7520a	Substitution	X	89522993	89522993	-	-	-	-	-	-	C	A
PD7520a	Substitution	X	89659849	89659849	-	-	-	-	-	-	A	T
PD7520a	Substitution	X	90519523	90519523	-	-	-	-	-	-	A	T
PD7520a	Substitution	X	91746748	91746748	PCDH11X	CCDS14461.1	Intronic	-	-	-	G	A
PD7520a	Substitution	X	94133349	94133349	-	-	-	-	-	-	T	C
PD7520a	Substitution	X	95367574	95367574	-	-	-	-	-	-	T	G
PD7520a	Indel	X	104006051	104006051	-	-	-	-	-	-	-	-
PD7520a	Substitution	X	138445678	138445678	-	-	-	-	-	-	G	C
PD7520a	Substitution	X	142064157	142064157	-	-	-	-	-	-	T	G
PD7520a	Substitution	X	146027654	146027654	-	-	-	-	-	-	C	A
PD7520a	Substitution	X	150903454	150903454	-	-	-	-	-	-	A	G
PD7520a	Substitution	Y	4432281	4432281	-	-	-	-	-	-	A	C
PD7520a	Substitution	Y	5182444	5182444	PCDH11Y	ENST00000400457	Intronic	-	-	-	C	T
PD7520a	Substitution	Y	21543691	21543691	-	-	-	-	-	-	A	G
PD7520a	Substitution	Y	23422289	23422289	-	-	-	-	-	-	G	A
PD7522a	Substitution	1	3833332	3833332	-	-	-	-	-	-	G	T
PD7522a	Substitution	1	12930659	12930659	-	-	-	-	-	-	G	T
PD7522a	Substitution	1	22682989	22682989	-	-	-	-	-	-	C	T
PD7522a	Substitution	1	32678192	32678192	DCDC2B	CCDS44100.1	c.629A>T	p.Y210F	Missense	-	A	T
PD7522a	Substitution	1	33867852	33867852	-	-	-	-	-	-	C	G
PD7522a	Substitution	1	37093448	37093448	-	-	-	-	-	-	C	A
PD7522a	Substitution	1	37615534	37615534	-	-	-	-	-	-	G	A
PD7522a	Substitution	1	42080750	42080750	HIVEP3	CCDS44124.1	Intronic	-	-	-	C	A
PD7522a	Substitution	1	42511635	42511635	-	-	-	-	-	-	A	G
PD7522a	Substitution	1	53123024	53123024	-	-	-	-	-	-	A	G
PD7522a	Substitution	1	57313295	57313295	-	-	-	-	-	-	T	C
PD7522a	Substitution	1	61802100	61802100	NFIA	CCDS44156.1	Intronic	-	-	-	G	A
PD7522a	Substitution	1	67445656	67445656	MIER1	CCDS41348.1	Intronic	-	-	-	A	T
PD7522a	Substitution	1	67708392	67708392	IL23R	CCDS637.1	Intronic	-	-	-	C	T
PD7522a	Substitution	1	68862135	68862135	-	-	-	-	-	-	G	A
PD7522a	Substitution	1	69268194	69268194	-	-	-	-	-	-	C	T
PD7522a	Substitution	1	73507195	73507195	-	-	-	-	-	-	C	A
PD7522a	Substitution	1	74172967	74172967	-	-	-	-	-	-	C	T
PD7522a	Substitution	1	78901405	78901405	PTGFR	CCDS686.1	Intronic	-	-	-	G	A
PD7522a	Substitution	1	80802922	80802922	-	-	-	-	-	-	T	A
PD7522a	Substitution	1	80898403	80898403	-	-	-	-	-	-	G	T
PD7522a	Substitution	1	81602958	81602958	-	-	-	-	-	-	G	A
PD7522a	Substitution	1	81669010	81669010	-	-	-	-	-	-	G	T
PD7522a	Substitution	1	81757584	81757584	-	-	-	-	-	-	C	A
PD7522a	Substitution	1	82239478	82239478	LPHN2	CCDS689.1	Intronic	-	-	-	T	C
PD7522a	Substitution	1	82853264	82853264	-	-	-	-	-	-	T	C
PD7522a	Substitution	1	86794046	86794046	-	-	-	-	-	-	T	A
PD7522a	Substitution	1	87808991	87808991	LMO4	CCDS713.1	Intronic	-	-	-	C	G
PD7522a	Substitution	1	93158898	93158898	EVIS	CCDS30774.1	Intronic	-	-	-	A	C
PD7522a	Substitution	1	96044503	96044503	-	-	-	-	-	-	A	T
PD7522a	Substitution	1	100509443	100509443	HIAT1	CCDS763.1	Intronic	-	-	-	C	G
PD7522a	Substitution	1	111749085	111749085	-	-	-	-	-	-	T	C
PD7522a	Substitution	1	112763324	112763324	-	-	-	-	-	-	G	T
PD7522a	Substitution	1	152325109	152325109	FLG2	CCDS30861.1	c.5153C>A	p.S1718Y	Missense	-	G	T
PD7522a	Substitution	1	160430608	160430608	-	-	-	-	-	-	A	T
PD7522a	Substitution	1	163085105	163085105	-	-	-	-	-	-	T	G
PD7522a	Substitution	1	163574475	163574475	-	-	-	-	-	-	G	A
PD7522a	Substitution	1	172191406	172191406	DNM3	CCDS44276.1	Intronic	-	-	-	C	T
PD7522a	Substitution	1	179294489	179294489	SOAT1	CCDS1330.1	Intronic	-	-	-	G	A
PD7522a	Substitution	1	181299338	181299338	-	-	-	-	-	-	C	T
PD7522a	Substitution	1	188651984	188651984	-	-	-	-	-	-	C	T
PD7522a	Substitution	1	188954643	188954643	-	-	-	-	-	-	T	C
PD7522a	Substitution	1	190086725	190086725	FAM5C	CCDS1373.1	Intronic	-	-	-	G	A
PD7522a	Substitution	1	193507351	193507351	-	-	-	-	-	-	G	C
PD7522a	Substitution	1	195577488	195577488	-	-	-	-	-	-	T	A
PD7522a	Substitution	1	195634746	195634746	-	-	-	-	-	-	G	A
PD7522a	Substitution	1	196054123	196054123	-	-	-	-	-	-	C	G
PD7522a	Substitution	1	198093478	198093478	-	-	-	-	-	-	T	A
PD7522a	Substitution	1	200156753	200156753	-	-	-	-	-	-	C	A
PD7522a	Substitution	1	203572109	203572109	-	-	-	-	-	-	C	T
PD7522a	Substitution	1	206240414	206240414	C1orf186	ENST00000331555	Intronic	-	-	-	A	T
PD7522a	Substitution	1	209397492	209397492	-	-	-	-	-	-	T	C
PD7522a	Substitution	1	214233506	214233506	-	-	-	-	-	-	C	G
PD7522a	Substitution	1	237528236	237528236	RYR2	ENST00000366574	Intronic	-	-	-	C	G
PD7522a	Substitution	1	242186861	242186861	-	-	-	-	-	-	G	A
PD7522a	Substitution	1	244640732	244640732	C1orf101	CCDS44340.1	Intronic	-	-	-	G	A
PD7522a	Substitution	1	245866093	245866093	KIF26B	ENST00000366518	Non-coding	r.5473g>u	3prime UTR	-	G	T
PD7522a	Substitution	2	121767	121767	-	-	-	-	-	-	G	A
PD7522a	Substitution	2	6305539	6305539	-	-	-	-	-	-	G	T
PD7522a	Substitution	2	11810408	11810408	-	-	-	-	-	-	G	T
PD7522a	Substitution	2	12757904	12757904	-	-	-	-	-	-	T	G
PD7522a	Substitution	2	16613939	16613939	-	-	-	-	-	-	C	T
PD7522a	Substitution	2	16893658	16893658	-	-	-	-	-	-	G	T
PD7522a	Substitution	2	17391726	17391726	-	-	-	-	-	-	C	T
PD7522a	Substitution	2	20370525	20370525	-	-	-	-	-	-	G	A
PD7522a	Substitution	2	21227116	21227116	APOB	CCDS1703.1	Intronic	-	-	-	G	A
PD7522a	Substitution	2	51070456	51070456	NRXN1	CCDS46282.1	Intronic	-	-	-	T	C
PD7522a	Substitution	2	51070457	51070457	NRXN1	CCDS46282.1	Intronic	-	-	-	G	T
PD7522a	Substitution	2	54441822	54441822	ACYP2	CCDS1850.1	Intronic	-	-	-	A	T
PD7522a	Substitution	2	65278485	65278485	-	-	-	-	-	-	T	A
PD7522a	Substitution	2	75567300	75567300	-	-	-	-	-	-	T	A
PD7522a	Substitution	2	81179593	81179593	-	-	-	-	-	-	G	C
PD7522a	Substitution	2	81538892	81538892	-	-	-	-	-	-	C	T
PD7522a	Substitution	2	82449612	82449612	-	-	-	-	-	-	C	T
PD7522a	Substitution	2	107680344	107680344	-	-	-	-	-	-	C	T
PD7522a	Substitution	2	110283560	110283560	-	-	-	-	-	-	G	A
PD7522a	Indel	2	111784004	111784007	-	-	-	-	-	-	-	-
PD7522a	Substitution	2	116021568	116021568	DPP10	CCDS46400.1	Intronic	-	-	-	C	T
PD7522a	Substitution	2	117185798	117185798	-	-	-	-	-	-	T	G
PD7522a	Substitution	2	119073857	119073857	-	-	-	-	-	-	G	A
PD7522a	Substitution	2	124275134	124275134	-	-	-	-	-	-	T	G
PD7522a	Substitution	2	135690150	135690150	CCNT2	CCDS2174.1	Intronic	-	-	-	T	C

PD7522a	Substitution	4	67340973	67340973	-	-	-	-	-	-	T	C
PD7522a	Substitution	4	67496380	67496380	-	-	-	-	-	-	C	A
PD7522a	Substitution	4	72374429	72374429	SLC4A4	CCDS3549.1	Intronic	-	-	-	C	G
PD7522a	Substitution	4	72510820	72510820	-	-	-	-	-	-	T	A
PD7522a	Substitution	4	73889489	73889489	-	-	-	-	-	-	G	T
PD7522a	Substitution	4	80121150	80121150	-	-	-	-	-	-	A	T
PD7522a	Substitution	4	84764852	84764852	-	-	-	-	-	-	G	A
PD7522a	Substitution	4	84938330	84938330	-	-	-	-	-	-	T	C
PD7522a	Substitution	4	86609022	86609022	ARHGAP24	CCDS34025.1	Intronic	-	-	-	T	A
PD7522a	Substitution	4	88590620	88590620	-	-	-	-	-	-	G	A
PD7522a	Substitution	4	90522767	90522767	-	-	-	-	-	-	C	T
PD7522a	Substitution	4	91520457	91520457	FAM190A	CCDS47100.1	Intronic	-	-	-	A	T
PD7522a	Substitution	4	94452084	94452084	GRID2	CCDS3637.1	Intronic	-	-	-	A	T
PD7522a	Substitution	4	100410998	100410998	-	-	-	-	-	-	C	T
PD7522a	Substitution	4	106019774	106019774	-	-	-	-	-	-	G	A
PD7522a	Substitution	4	106998525	106998525	TBCK	CCDS3673.1	Intronic	-	-	-	T	A
PD7522a	Substitution	4	109849276	109849276	COL25A1	CCDS43258.1	Intronic	-	-	-	C	A
PD7522a	Substitution	4	116068127	116068127	-	-	-	-	-	-	T	A
PD7522a	Substitution	4	116816321	116816321	-	-	-	-	-	-	C	T
PD7522a	Substitution	4	117026317	117026317	-	-	-	-	-	-	A	C
PD7522a	Substitution	4	120894498	120894498	-	-	-	-	-	-	C	T
PD7522a	Substitution	4	122140590	122140590	TNIP3	ENST00000509841	Intronic	-	-	-	C	T
PD7522a	Substitution	4	128898761	128898761	C4orf29	CCDS47131.1	Intronic	-	-	-	A	T
PD7522a	Substitution	4	133635921	133635921	-	-	-	-	-	-	G	T
PD7522a	Substitution	4	136028262	136028262	-	-	-	-	-	-	A	C
PD7522a	Substitution	4	137551230	137551230	-	-	-	-	-	-	C	A
PD7522a	Substitution	4	141156363	141156363	-	-	-	-	-	-	A	T
PD7522a	Substitution	4	142237621	142237621	-	-	-	-	-	-	A	T
PD7522a	Substitution	4	142713190	142713190	-	-	-	-	-	-	G	C
PD7522a	Substitution	4	144883162	144883162	-	-	-	-	-	-	C	G
PD7522a	Substitution	4	150678111	150678111	-	-	-	-	-	-	C	T
PD7522a	Substitution	4	161563184	161563184	-	-	-	-	-	-	T	A
PD7522a	Substitution	4	165000734	165000734	MARCH1	CCDS45732.1	Intronic	-	-	-	T	C
PD7522a	Substitution	4	171423331	171423331	-	-	-	-	-	-	C	T
PD7522a	Substitution	4	172514409	172514409	-	-	-	-	-	-	G	T
PD7522a	Substitution	4	175606571	175606571	GLRA3	CCDS3822.1	Intronic	-	-	-	T	C
PD7522a	Substitution	4	177216538	177216538	-	-	-	-	-	-	G	A
PD7522a	Indel	4	179954186	179954186	-	-	-	-	-	-	-	-
PD7522a	Substitution	5	2366432	2366432	-	-	-	-	-	-	C	A
PD7522a	Substitution	5	8180866	8180866	-	-	-	-	-	-	C	T
PD7522a	Substitution	5	12102246	12102246	-	-	-	-	-	-	C	T
PD7522a	Substitution	5	12767601	12767601	-	-	-	-	-	-	A	C
PD7522a	Substitution	5	13544661	13544661	-	-	-	-	-	-	A	T
PD7522a	Substitution	5	16168636	16168636	MARCH11	CCDS47192.1	Intronic	-	-	-	A	T
PD7522a	Substitution	5	16634429	16634429	-	-	-	-	-	-	C	T
PD7522a	Substitution	5	20428399	20428399	CDH18	CCDS3652.1	Intronic	-	-	-	G	A
PD7522a	Substitution	5	21120855	21120855	-	-	-	-	-	-	G	T
PD7522a	Substitution	5	21251438	21251438	-	-	-	-	-	-	G	A
PD7522a	Substitution	5	21265675	21265675	-	-	-	-	-	-	A	C
PD7522a	Substitution	5	26123472	26123472	-	-	-	-	-	-	C	T
PD7522a	Substitution	5	27072647	27072647	CDH9	ENST00000513289	Intronic	-	-	-	A	G
PD7522a	Substitution	5	27164929	27164929	-	-	-	-	-	-	T	A
PD7522a	Substitution	5	29063330	29063330	-	-	-	-	-	-	G	A
PD7522a	Substitution	5	37341057	37341057	NUP155	CCDS3921.1	Intronic	-	-	-	C	A
PD7522a	Substitution	5	40366279	40366279	-	-	-	-	-	-	C	A
PD7522a	Substitution	5	40458878	40458878	-	-	-	-	-	-	G	T
PD7522a	Substitution	5	45906933	45906933	-	-	-	-	-	-	C	G
PD7522a	Substitution	5	52202191	52202191	ITGA1	CCDS3955.1	Intronic	-	-	-	G	T
PD7522a	Substitution	5	52316930	52316930	ITGA2	CCDS3957.1	Intronic	-	-	-	C	A
PD7522a	Substitution	5	57591922	57591922	-	-	-	-	-	-	C	T
PD7522a	Indel	5	59246985	59246987	-	-	-	-	-	-	-	-
PD7522a	Substitution	5	66748536	66748536	-	-	-	-	-	-	A	G
PD7522a	Substitution	5	75899176	75899176	IQGAP2	CCDS34188.1	Intronic	-	-	-	T	C
PD7522a	Substitution	5	80405750	80405750	RASGRF2	CCDS4052.1	Intronic	-	-	-	C	T
PD7522a	Substitution	5	81437698	81437698	ATG10	CCDS4057.1	Intronic	-	-	-	G	A
PD7522a	Substitution	5	86121502	86121502	-	-	-	-	-	-	A	T
PD7522a	Substitution	5	90845383	90845383	-	-	-	-	-	-	C	A
PD7522a	Substitution	5	91523508	91523508	-	-	-	-	-	-	G	T
PD7522a	Indel	5	95457676	95457679	-	-	-	-	-	-	-	-
PD7522a	Substitution	5	104819620	104819620	-	-	-	-	-	-	T	A
PD7522a	Substitution	5	111812367	111812367	-	-	-	-	-	-	A	G
PD7522a	Substitution	5	113564692	113564692	-	-	-	-	-	-	C	T
PD7522a	Substitution	5	113879568	113879568	-	-	-	-	-	-	A	C
PD7522a	Substitution	5	114387462	114387462	-	-	-	-	-	-	A	T
PD7522a	Substitution	5	114410834	114410834	-	-	-	-	-	-	A	T
PD7522a	Substitution	5	116121883	116121883	-	-	-	-	-	-	G	A
PD7522a	Substitution	5	135856617	135856617	-	-	-	-	-	-	G	A
PD7522a	Substitution	5	136589926	136589926	SPOCK1	CCDS4191.1	Intronic	-	-	-	C	G
PD7522a	Substitution	5	139239156	139239156	NRG2	CCDS47277.1	Intronic	-	-	-	G	A
PD7522a	Substitution	5	147971525	147971525	HTR4	CCDS34272.1	Intronic	-	-	-	T	A
PD7522a	Substitution	5	151739305	151739305	-	-	-	-	-	-	C	A
PD7522a	Substitution	5	151868676	151868676	-	-	-	-	-	-	C	A
PD7522a	Substitution	5	152442768	152442768	-	-	-	-	-	-	G	T
PD7522a	Substitution	5	160334020	160334020	-	-	-	-	-	-	C	T
PD7522a	Substitution	5	160533547	160533547	-	-	-	-	-	-	T	C
PD7522a	Substitution	5	163101383	163101383	-	-	-	-	-	-	A	T
PD7522a	Substitution	5	164179017	164179017	-	-	-	-	-	-	A	G
PD7522a	Substitution	5	174432329	174432329	-	-	-	-	-	-	G	A
PD7522a	Substitution	5	175284778	175284778	CPLX2	CCDS4396.1	Intronic	-	-	-	C	T
PD7522a	Indel	5	179018046	179018085	-	-	-	-	-	-	-	-
PD7522a	Substitution	5	180585743	180585743	-	-	-	-	-	-	C	T
PD7522a	Substitution	6	2889312	2889312	SERPIN9	CCDS4478.1	Non-coding	r.2306>u	3prime UTR	-	A	G
PD7522a	Substitution	6	8800541	8800541	-	-	-	-	-	-	G	A
PD7522a	Substitution	6	9219061	9219061	-	-	-	-	-	-	A	T
PD7522a	Substitution	6	11352197	11352197	NEDD9	ENST00000504387	Intronic	-	-	-	A	C
PD7522a	Substitution	6	12326065	12326065	-	-	-	-	-	-	T	G
PD7522a	Substitution	6	32631958	32631958	HLA-DQB1	CCDS43451.1	Intronic	-	-	-	C	T
PD7522a	Substitution	6	35741593	35741593	-	-	-	-	-	-	C	T
PD7522a	Substitution	6	48240877	48240877	-	-	-	-	-	-	G	T
PD7522a	Substitution	6	50308721	50308721	-	-	-	-	-	-	A	T
PD7522a	Substitution	6	57267896	57267896	PRIM2	ENST00000389488	Intronic	-	-	-	G	A
PD7522a	Substitution	6	63278782	63278782	-	-	-	-	-	-	A	G
PD7522a	Indel	6	68701907	68701907	-	-	-	-	-	-	-	-
PD7522a	Substitution	6	68822235	68822235	-	-	-	-	-	-	G	T
PD7522a	Substitution	6	81400274	81400274	-	-	-	-	-	-	T	C
PD7522a	Substitution	6	92795581	92795581	-	-	-	-	-	-	G	T
PD7522a	Substitution	6	103172230	103172230	-	-	-	-	-	-	A	G
PD7522a	Substitution	6	110631006	110631006	C6orf186	CCDS43489.1	Intronic	-	-	-	C	T
PD7522a	Substitution	6	117488986	117488986	-	-	-	-	-	-	C	A
PD7522a	Substitution	6	121820362	121820362	-	-	-	-	-	-	C	T
PD7522a	Substitution	6	123956649	123956649	TRDN	ENST00000334268	Intronic	-	-	-	T	A

PD7522a	Substitution	6	123994491	123994491	-	-	-	-	-	-	T	A
PD7522a	Substitution	6	124869511	124869511	NKAIN2	CCDS34526.1	Intronic	-	-	-	T	A
PD7522a	Substitution	6	125693843	125693843	-	-	-	-	-	-	G	T
PD7522a	Substitution	6	134100521	134100521	-	-	-	-	-	-	G	A
PD7522a	Substitution	6	135411092	135411092	-	-	-	-	-	-	C	A
PD7522a	Substitution	6	141240822	141240822	-	-	-	-	-	-	C	T
PD7522a	Substitution	6	146113542	146113542	-	-	-	-	-	-	T	A
PD7522a	Substitution	6	169166943	169166943	-	-	-	-	-	-	C	A
PD7522a	Substitution	7	4466517	4466517	-	-	-	-	-	-	C	A
PD7522a	Substitution	7	9235026	9235026	-	-	-	-	-	-	T	G
PD7522a	Substitution	7	9660714	9660714	-	-	-	-	-	-	C	T
PD7522a	Substitution	7	12518178	12518178	-	-	-	-	-	-	G	A
PD7522a	Substitution	7	14624186	14624186	DGKB	CCDS47547.1	Intronic	-	-	-	C	T
PD7522a	Substitution	7	19362412	19362412	-	-	-	-	-	-	T	A
PD7522a	Substitution	7	21203037	21203037	-	-	-	-	-	-	A	C
PD7522a	Substitution	7	25017447	25017447	OSBPL3	CCDS5390.1	Intronic	-	-	-	C	T
PD7522a	Substitution	7	26024683	26024683	-	-	-	-	-	-	A	C
PD7522a	Substitution	7	29669999	29669999	-	-	-	-	-	-	T	C
PD7522a	Substitution	7	31920905	31920905	PDE1C	CCDS5437.1	Intronic	-	-	-	C	T
PD7522a	Substitution	7	39485564	39485564	POU6F2	CCDS34620.2	Intronic	-	-	-	T	A
PD7522a	Substitution	7	44553999	44553999	NPC1L1	CCDS5491.1	Intronic	-	-	-	G	A
PD7522a	Substitution	7	45375260	45375260	-	-	-	-	-	-	G	T
PD7522a	Substitution	7	49995349	49995349	ZPBP	CCDS5509.1	Intronic	-	-	-	C	A
PD7522a	Indel	7	51974572	51974572	-	-	-	-	-	-	-	-
PD7522a	Substitution	7	73077103	73077103	-	-	-	-	-	-	C	T
PD7522a	Substitution	7	83508529	83508529	-	-	-	-	-	-	C	T
PD7522a	Substitution	7	85201296	85201296	-	-	-	-	-	-	G	A
PD7522a	Substitution	7	85476139	85476139	-	-	-	-	-	-	G	A
PD7522a	Substitution	7	90822345	90822345	CDK14	CCDS5619.1	Intronic	-	-	-	G	C
PD7522a	Substitution	7	93833736	93833736	-	-	-	-	-	-	C	T
PD7522a	Substitution	7	94205137	94205137	-	-	-	-	-	-	G	T
PD7522a	Substitution	7	100636091	100636091	MUC12	ENST00000379442	c.2676T>A	p.T892T	Silent	-	T	A
PD7522a	Substitution	7	103829482	103829482	ORCSL	CCDS5734.1	Intronic	-	-	-	A	T
PD7522a	Substitution	7	109451573	109451573	-	-	-	-	-	-	C	G
PD7522a	Substitution	7	118570176	118570176	-	-	-	-	-	-	T	A
PD7522a	Substitution	7	121254958	121254958	-	-	-	-	-	-	A	G
PD7522a	Substitution	7	137989248	137989248	-	-	-	-	-	-	G	T
PD7522a	Substitution	7	146128499	146128499	CNTNAP2	CCDS5889.1	Intronic	-	-	-	T	A
PD7522a	Substitution	7	146673344	146673344	CNTNAP2	CCDS5889.1	Intronic	-	-	-	C	G
PD7522a	Substitution	8	3368992	3368992	CSMD1	ENST00000318252	Intronic	-	-	-	G	A
PD7522a	Substitution	8	3423850	3423850	CSMD1	ENST00000318252	Intronic	-	-	-	C	T
PD7522a	Substitution	8	5085512	5085512	-	-	-	-	-	-	C	A
PD7522a	Substitution	8	11881684	11881684	-	-	-	-	-	-	A	G
PD7522a	Substitution	8	21236953	21236953	-	-	-	-	-	-	T	A
PD7522a	Substitution	8	27833825	27833825	SCARA5	CCDS6064.1	Intronic	-	-	-	G	A
PD7522a	Substitution	8	29935838	29935838	TMEM66	CCDS6074.1	Intronic	-	-	-	C	T
PD7522a	Substitution	8	31669847	31669847	NRG1	CCDS47836.1	Intronic	-	-	-	G	A
PD7522a	Substitution	8	34556582	34556582	-	-	-	-	-	-	T	A
PD7522a	Substitution	8	50849042	50849042	-	-	-	-	-	-	G	T
PD7522a	Substitution	8	52012134	52012134	-	-	-	-	-	-	G	A
PD7522a	Substitution	8	53823625	53823625	-	-	-	-	-	-	A	C
PD7522a	Substitution	8	54272542	54272542	-	-	-	-	-	-	T	C
PD7522a	Substitution	8	55287072	55287072	-	-	-	-	-	-	A	G
PD7522a	Substitution	8	60156302	60156302	-	-	-	-	-	-	A	C
PD7522a	Substitution	8	64532078	64532078	-	-	-	-	-	-	T	G
PD7522a	Substitution	8	65787675	65787675	-	-	-	-	-	-	T	C
PD7522a	Substitution	8	65926957	65926957	-	-	-	-	-	-	G	A
PD7522a	Substitution	8	80036560	80036560	-	-	-	-	-	-	C	A
PD7522a	Substitution	8	80667086	80667086	-	-	-	-	-	-	G	T
PD7522a	Substitution	8	82372517	82372517	FABP9	CCDS34914.1	Intronic	-	-	-	G	T
PD7522a	Substitution	8	82812224	82812224	-	-	-	-	-	-	G	A
PD7522a	Substitution	8	84673546	84673546	-	-	-	-	-	-	G	C
PD7522a	Substitution	8	87850964	87850964	-	-	-	-	-	-	G	A
PD7522a	Substitution	8	107367211	107367211	OXR1	CCDS47909.1	Intronic	-	-	-	A	G
PD7522a	Substitution	8	111407873	111407873	-	-	-	-	-	-	C	A
PD7522a	Substitution	8	111502546	111502546	-	-	-	-	-	-	C	A
PD7522a	Substitution	8	111515074	111515074	-	-	-	-	-	-	G	C
PD7522a	Substitution	8	112021277	112021277	-	-	-	-	-	-	G	C
PD7522a	Substitution	8	112963320	112963320	-	-	-	-	-	-	T	C
PD7522a	Substitution	8	118167386	118167386	SLC30A8	CCDS6322.1	Intronic	-	-	-	G	T
PD7522a	Substitution	8	130820608	130820608	-	-	-	-	-	-	T	A
PD7522a	Substitution	8	135871527	135871527	AC103764.1	ENST00000505083	Intronic	-	-	-	C	T
PD7522a	Substitution	8	139558292	139558292	-	-	-	-	-	-	G	A
PD7522a	Substitution	8	144229035	144229035	-	-	-	-	-	-	C	A
PD7522a	Substitution	9	9444011	9444011	PTPRD	CCDS43786.1	Intronic	-	-	-	T	A
PD7522a	Substitution	9	10358936	10358936	PTPRD	CCDS43786.1	Intronic	-	-	-	G	T
PD7522a	Substitution	9	24408829	24408829	-	-	-	-	-	-	C	A
PD7522a	Substitution	9	24424151	24424151	-	-	-	-	-	-	C	A
PD7522a	Substitution	9	25615980	25615980	-	-	-	-	-	-	G	T
PD7522a	Substitution	9	28286952	28286952	LINGO2	CCDS6524.1	Intronic	-	-	-	C	A
PD7522a	Substitution	9	29748946	29748946	-	-	-	-	-	-	A	T
PD7522a	Substitution	9	30756396	30756396	-	-	-	-	-	-	C	A
PD7522a	Substitution	9	30810608	30810608	-	-	-	-	-	-	C	A
PD7522a	Substitution	9	30850557	30850557	-	-	-	-	-	-	G	A
PD7522a	Substitution	9	34213545	34213545	UBAP1	CCDS6550.1	Intronic	-	-	-	C	T
PD7522a	Substitution	9	37631800	37631800	-	-	-	-	-	-	T	C
PD7522a	Substitution	9	74152220	74152220	-	-	-	-	-	-	C	A
PD7522a	Substitution	9	76262140	76262140	-	-	-	-	-	-	C	T
PD7522a	Substitution	9	89375041	89375041	-	-	-	-	-	-	A	T
PD7522a	Substitution	9	90943489	90943489	-	-	-	-	-	-	A	G
PD7522a	Substitution	9	100294176	100294176	TMOD1	CCDS6726.1	Intronic	-	-	-	G	A
PD7522a	Substitution	9	103832015	103832015	ENSG00000148123	CCDS6751.1	Intronic	-	-	-	C	A
PD7522a	Substitution	9	105099639	105099639	-	-	-	-	-	-	C	T
PD7522a	Substitution	9	107293529	107293529	-	-	-	-	-	-	C	T
PD7522a	Substitution	9	110710434	110710434	-	-	-	-	-	-	G	A
PD7522a	Substitution	9	113625127	113625127	-	-	-	-	-	-	A	C
PD7522a	Substitution	9	117514739	117514739	-	-	-	-	-	-	A	T
PD7522a	Substitution	9	118541558	118541558	-	-	-	-	-	-	A	C
PD7522a	Substitution	9	120656607	120656607	-	-	-	-	-	-	T	A
PD7522a	Substitution	9	127123849	127123849	PSMB7	CCDS6855.1	Intronic	-	-	-	C	A
PD7522a	Substitution	9	134210489	134210489	-	-	-	-	-	-	G	T
PD7522a	Substitution	10	592908	592908	DIP2C	CCDS7054.1	Intronic	-	-	-	C	A
PD7522a	Substitution	10	8025671	8025671	TAF3	CCDS41487.1	Intronic	-	-	-	G	A
PD7522a	Substitution	10	8144814	8144814	-	-	-	-	-	-	A	T
PD7522a	Substitution	10	16758658	16758658	RSU1	CCDS7112.1	Intronic	-	-	-	C	A
PD7522a	Substitution	10	24682227	24682227	KIAA1217	CCDS31165.1	Intronic	-	-	-	C	T
PD7522a	Substitution	10	28280355	28280355	ARMC4	CCDS7157.1	Intronic	-	-	-	G	T
PD7522a	Substitution	10	37721730	37721730	-	-	-	-	-	-	A	T
PD7522a	Substitution	10	47082337	47082337	-	-	-	-	-	-	G	A
PD7522a	Substitution	10	54129855	54129855	-	-	-	-	-	-	C	A
PD7522a	Substitution	10	54883114	54883114	-	-	-	-	-	-	G	A

PD7522a	Substitution	10	56341493	56341493	PCDH15	CCDS44404.1	Intronic	-	-	C	T
PD7522a	Substitution	10	57475692	57475692	-	-	-	-	-	A	G
PD7522a	Substitution	10	60093896	60093896	-	-	-	-	-	T	A
PD7522a	Substitution	10	65512185	65512185	-	-	-	-	-	T	A
PD7522a	Substitution	10	65958691	65958691	-	-	-	-	-	A	T
PD7522a	Substitution	10	67046140	67046140	-	-	-	-	-	T	A
PD7522a	Substitution	10	68607885	68607885	CTNNA3	CCDS7269.1	Intronic	-	-	A	T
PD7522a	Substitution	10	89729654	89729654	PTEN	ENST00000371953	Non-coding	r.6994>c	3prime UTR	T	C
PD7522a	Substitution	10	90575266	90575266	LIPM	CCDS44457.1	c.858+6T>A	p.?	Splice	T	A
PD7522a	Substitution	10	99853893	99853893	-	-	-	-	-	A	G
PD7522a	Substitution	10	108877910	108877910	SORCS1	CCDS7559.1	Intronic	-	-	G	A
PD7522a	Indel	10	110573174	110573177	-	-	-	-	-	-	-
PD7522a	Substitution	10	117187060	117187060	ATRNL1	CCDS7592.1	Intronic	-	-	T	A
PD7522a	Substitution	10	117629815	117629815	ATRNL1	CCDS7592.1	Intronic	-	-	C	T
PD7522a	Substitution	10	118158247	118158247	-	-	-	-	-	T	C
PD7522a	Indel	10	123935198	123935199	-	-	-	-	-	-	-
PD7522a	Substitution	10	133224344	133224344	-	-	-	-	-	G	A
PD7522a	Substitution	11	1760892	1760892	ENSG00000244242	ENST00000382123	Intronic	-	-	A	T
PD7522a	Substitution	11	7803182	7803182	-	-	-	-	-	C	A
PD7522a	Substitution	11	21795446	21795446	-	-	-	-	-	T	A
PD7522a	Substitution	11	24057388	24057388	-	-	-	-	-	G	A
PD7522a	Substitution	11	30976927	30976927	ENSG00000226746	ENST00000399333	Intronic	-	-	A	T
PD7522a	Substitution	11	37411017	37411017	-	-	-	-	-	C	T
PD7522a	Substitution	11	37753096	37753096	-	-	-	-	-	G	A
PD7522a	Substitution	11	38805322	38805322	-	-	-	-	-	C	T
PD7522a	Substitution	11	42919585	42919585	-	-	-	-	-	C	T
PD7522a	Substitution	11	42996247	42996247	-	-	-	-	-	G	A
PD7522a	Substitution	11	45314133	45314133	-	-	-	-	-	G	A
PD7522a	Substitution	11	49888117	49888117	-	-	-	-	-	C	T
PD7522a	Substitution	11	49889380	49889380	-	-	-	-	-	T	A
PD7522a	Substitution	11	56450817	56450817	-	-	-	-	-	A	T
PD7522a	Substitution	11	69314756	69314756	-	-	-	-	-	C	T
PD7522a	Substitution	11	80369910	80369910	-	-	-	-	-	C	T
PD7522a	Substitution	11	88747488	88747488	GRM5	CCDS44694.1	Intronic	-	-	G	A
PD7522a	Substitution	11	89322666	89322666	-	-	-	-	-	A	T
PD7522a	Substitution	11	96965070	96965070	-	-	-	-	-	C	T
PD7522a	Substitution	11	99993807	99993807	CNTN5	ENST00000279463	Intronic	-	-	A	T
PD7522a	Substitution	11	101687956	101687956	-	-	-	-	-	C	T
PD7522a	Substitution	11	103551556	103551556	-	-	-	-	-	G	T
PD7522a	Substitution	11	105574844	105574844	GRIA4	CCDS41706.1	Intronic	-	-	T	C
PD7522a	Substitution	11	109906842	109906842	-	-	-	-	-	C	T
PD7522a	Substitution	11	112346443	112346443	-	-	-	-	-	C	A
PD7522a	Substitution	11	115403635	115403635	-	-	-	-	-	C	G
PD7522a	Substitution	11	115986959	115986959	-	-	-	-	-	C	G
PD7522a	Substitution	11	115986963	115986963	-	-	-	-	-	T	G
PD7522a	Substitution	11	117901712	117901712	-	-	-	-	-	A	G
PD7522a	Substitution	11	124276066	124276066	-	-	-	-	-	C	A
PD7522a	Substitution	11	127139495	127139495	-	-	-	-	-	G	A
PD7522a	Substitution	11	127862582	127862582	-	-	-	-	-	G	T
PD7522a	Substitution	11	130295652	130295652	ADAMTS8	CCDS41732.1	Intronic	-	-	C	T
PD7522a	Substitution	11	131353421	131353421	OPCML	CCDS41733.1	Intronic	-	-	A	G
PD7522a	Substitution	12	582566	582566	B4GALNT3	CCDS8504.1	Intronic	-	-	C	G
PD7522a	Substitution	12	3767972	3767972	EFCAB4B	CCDS44803.1	Intronic	-	-	A	G
PD7522a	Substitution	12	9296337	9296337	-	-	-	-	-	G	A
PD7522a	Substitution	12	16253018	16253018	-	-	-	-	-	C	A
PD7522a	Substitution	12	17615327	17615327	-	-	-	-	-	C	A
PD7522a	Substitution	12	21025121	21025121	SLCO1B3	CCDS8684.1	Intronic	-	-	T	A
PD7522a	Substitution	12	29065054	29065054	-	-	-	-	-	G	A
PD7522a	Substitution	12	37908386	37908386	-	-	-	-	-	T	A
PD7522a	Substitution	12	39342014	39342014	-	-	-	-	-	A	T
PD7522a	Substitution	12	46111426	46111426	-	-	-	-	-	T	A
PD7522a	Substitution	12	47869634	47869634	-	-	-	-	-	C	T
PD7522a	Substitution	12	48699469	48699469	-	-	-	-	-	G	T
PD7522a	Substitution	12	49907109	49907109	SPATS2	CCDS31794.1	Intronic	-	-	C	T
PD7522a	Substitution	12	58677902	58677902	-	-	-	-	-	C	T
PD7522a	Substitution	12	69430477	69430477	-	-	-	-	-	G	A
PD7522a	Substitution	12	72627407	72627407	-	-	-	-	-	G	A
PD7522a	Substitution	12	73969396	73969396	-	-	-	-	-	T	A
PD7522a	Substitution	12	76817471	76817471	OSBPL8	CCDS31862.1	Intronic	-	-	C	T
PD7522a	Substitution	12	79706407	79706407	SYT1	CCDS9017.1	Intronic	-	-	C	T
PD7522a	Substitution	12	82541058	82541058	-	-	-	-	-	C	G
PD7522a	Substitution	12	82874804	82874804	-	-	-	-	-	G	A
PD7522a	Substitution	12	83696729	83696729	-	-	-	-	-	T	G
PD7522a	Indel	12	84962346	84962347	-	-	-	-	-	-	-
PD7522a	Substitution	12	88880377	88880377	-	-	-	-	-	T	A
PD7522a	Substitution	12	91933767	91933767	-	-	-	-	-	G	A
PD7522a	Substitution	12	115818645	115818645	-	-	-	-	-	G	T
PD7522a	Substitution	12	118560138	118560138	-	-	-	-	-	C	T
PD7522a	Substitution	12	119253138	119253138	-	-	-	-	-	G	A
PD7522a	Substitution	12	127897336	127897336	-	-	-	-	-	A	T
PD7522a	Substitution	12	128928880	128928880	TMEM132C	CCDS45009.1	Intronic	-	-	C	T
PD7522a	Substitution	12	129584270	129584270	TMEM132D	CCDS9266.1	Intronic	-	-	G	A
PD7522a	Substitution	12	131382654	131382654	-	-	-	-	-	G	A
PD7522a	Substitution	12	132322653	132322653	-	-	-	-	-	C	T
PD7522a	Substitution	13	28271597	28271597	MMP17	CCDS31927.1	Intronic	-	-	A	T
PD7522a	Substitution	13	29217330	29217330	-	-	-	-	-	G	T
PD7522a	Substitution	13	42094774	42094774	-	-	-	-	-	G	C
PD7522a	Substitution	13	42292272	42292272	KIAA0564	CCDS41881.1	Intronic	-	-	A	C
PD7522a	Substitution	13	46045978	46045978	COG3	CCDS9398.1	Intronic	-	-	C	T
PD7522a	Substitution	13	46884935	46884935	-	-	-	-	-	A	T
PD7522a	Substitution	13	50372425	50372425	-	-	-	-	-	G	A
PD7522a	Substitution	13	52145997	52145997	-	-	-	-	-	G	A
PD7522a	Substitution	13	55865846	55865846	-	-	-	-	-	C	G
PD7522a	Substitution	13	57674633	57674633	-	-	-	-	-	C	A
PD7522a	Substitution	13	64958812	64958812	-	-	-	-	-	G	T
PD7522a	Substitution	13	65218802	65218802	-	-	-	-	-	A	C
PD7522a	Substitution	13	66640670	66640670	-	-	-	-	-	A	T
PD7522a	Substitution	13	70418007	70418007	KLHL1	CCDS9445.1	Intronic	-	-	C	A
PD7522a	Substitution	13	71497974	71497974	-	-	-	-	-	G	T
PD7522a	Substitution	13	72018509	72018509	DACH1	ENST00000305425	Intronic	-	-	A	G
PD7522a	Substitution	13	72445433	72445433	-	-	-	-	-	G	A
PD7522a	Substitution	13	72912737	72912737	-	-	-	-	-	C	A
PD7522a	Substitution	13	77307403	77307403	-	-	-	-	-	C	T
PD7522a	Substitution	13	80173648	80173648	-	-	-	-	-	C	T
PD7522a	Substitution	13	81675895	81675895	-	-	-	-	-	A	T
PD7522a	Substitution	13	88776159	88776159	-	-	-	-	-	C	T
PD7522a	Substitution	13	90122549	90122549	-	-	-	-	-	A	T
PD7522a	Substitution	13	90267065	90267065	-	-	-	-	-	T	A
PD7522a	Substitution	13	102949335	102949335	FGF14	CCDS9500.1	Intronic	-	-	A	T
PD7522a	Substitution	13	104647936	104647936	-	-	-	-	-	C	G
PD7522a	Substitution	13	104991649	104991649	-	-	-	-	-	C	T

PD7523a	Substitution	2	61131410	61131410	REL	CCDS1864.1	Intronic	-	-	G	C
PD7523a	Substitution	2	62506396	62506396	AC107081.2	ENST00000506268	Intronic	-	-	G	A
PD7523a	Substitution	2	66998829	66998829	-	-	-	-	-	C	T
PD7523a	Substitution	2	79865285	79865285	CTNNA2	CCDS42703.2	Intronic	-	-	T	G
PD7523a	Substitution	2	84435490	84435490	-	-	-	-	-	A	G
PD7523a	Indel	2	92293241	92293242	-	-	-	-	-	-	-
PD7523a	Substitution	2	96580463	96580463	ENSG00000174501	ENST00000456556	Intronic	-	-	C	A
PD7523a	Substitution	2	100114129	100114129	-	-	-	-	-	G	A
PD7523a	Substitution	2	101336130	101336130	-	-	-	-	-	C	G
PD7523a	Substitution	2	105165910	105165910	-	-	-	-	-	C	A
PD7523a	Substitution	2	108556331	108556331	-	-	-	-	-	G	T
PD7523a	Substitution	2	115144283	115144283	-	-	-	-	-	A	T
PD7523a	Substitution	2	118288533	118288533	-	-	-	-	-	C	T
PD7523a	Substitution	2	118322484	118322484	-	-	-	-	-	C	A
PD7523a	Substitution	2	119031715	119031715	-	-	-	-	-	C	T
PD7523a	Substitution	2	123312351	123312351	-	-	-	-	-	C	G
PD7523a	Substitution	2	124093448	124093448	-	-	-	-	-	G	T
PD7523a	Substitution	2	124226591	124226591	-	-	-	-	-	T	C
PD7523a	Substitution	2	125418728	125418728	CNTNAP5	CCDS46401.1	Intronic	-	-	A	C
PD7523a	Substitution	2	127421424	127421424	GYPC	CCDS2136.1	Intronic	-	-	C	T
PD7523a	Substitution	2	131708865	131708865	ARHGFE4	CCDS42754.1	Intronic	-	-	G	T
PD7523a	Substitution	2	132397051	132397051	-	-	-	-	-	A	G
PD7523a	Substitution	2	133712679	133712679	NCKAP5	CCDS46418.1	Intronic	-	-	G	A
PD7523a	Substitution	2	142512906	142512906	LRP1B	CCDS2182.1	Intronic	-	-	T	G
PD7523a	Substitution	2	142816414	142816414	LRP1B	CCDS2182.1	Intronic	-	-	A	G
PD7523a	Substitution	2	145120370	145120370	-	-	-	-	-	C	T
PD7523a	Substitution	2	145957966	145957966	-	-	-	-	-	G	A
PD7523a	Substitution	2	155478899	155478899	-	-	-	-	-	A	G
PD7523a	Substitution	2	161549758	161549758	-	-	-	-	-	C	G
PD7523a	Substitution	2	162122289	162122289	-	-	-	-	-	C	T
PD7523a	Substitution	2	170418695	170418695	FASTKD1	CCDS33318.1	Intronic	-	-	G	T
PD7523a	Substitution	2	171342876	171342876	MYO3B	CCDS42773.1	Intronic	-	-	G	A
PD7523a	Substitution	2	172644248	172644248	SLC25A12	CCDS33327.1	Intronic	-	-	G	A
PD7523a	Substitution	2	181108494	181108494	-	-	-	-	-	G	C
PD7523a	Substitution	2	185756548	185756548	ZNF804A	CCDS2291.1	Intronic	-	-	C	T
PD7523a	Substitution	2	187489529	187489529	ITGAV	CCDS2292.1	Intronic	-	-	C	T
PD7523a	Substitution	2	189516306	189516306	-	-	-	-	-	G	T
PD7523a	Substitution	2	190803278	190803278	-	-	-	-	-	G	A
PD7523a	Substitution	2	195246153	195246153	-	-	-	-	-	T	G
PD7523a	Substitution	2	195354351	195354351	-	-	-	-	-	A	C
PD7523a	Substitution	2	195955309	195955309	-	-	-	-	-	G	C
PD7523a	Substitution	2	199737457	199737457	-	-	-	-	-	A	G
PD7523a	Substitution	2	205035049	205035049	-	-	-	-	-	C	T
PD7523a	Substitution	2	223481523	223481523	FARSB	CCDS2454.1	Intronic	-	-	A	T
PD7523a	Substitution	2	225253547	225253547	FAM124B	CCDS2461.1	Intronic	-	-	A	G
PD7523a	Substitution	2	229309362	229309362	-	-	-	-	-	G	A
PD7523a	Substitution	2	229539435	229539435	-	-	-	-	-	C	A
PD7523a	Substitution	2	23298152	23298152	-	-	-	-	-	C	T
PD7523a	Substitution	2	235974108	235974108	-	-	-	-	-	C	A
PD7523a	Substitution	2	239228490	239228490	-	-	-	-	-	C	T
PD7523a	Substitution	2	240966946	240966946	-	-	-	-	-	C	T
PD7523a	Substitution	3	1772928	1772928	-	-	-	-	-	T	A
PD7523a	Substitution	3	15055619	15055619	NR2C2	CCDS2621.1	Intronic	-	-	T	C
PD7523a	Substitution	3	40780279	40780279	-	-	-	-	-	C	T
PD7523a	Substitution	3	54704714	54704714	CACNA2D3	ENST00000474759	Intronic	-	-	C	T
PD7523a	Substitution	3	67776291	67776291	-	-	-	-	-	A	T
PD7523a	Substitution	3	68662930	68662930	-	-	-	-	-	C	T
PD7523a	Substitution	3	70813358	70813358	-	-	-	-	-	T	A
PD7523a	Substitution	3	70813359	70813359	-	-	-	-	-	A	C
PD7523a	Substitution	3	73554728	73554728	PDZRN3	CCDS33789.1	Intronic	-	-	A	G
PD7523a	Substitution	3	75173495	75173495	-	-	-	-	-	C	A
PD7523a	Substitution	3	76221059	76221059	ROBO2	ENST00000487694	Intronic	-	-	A	G
PD7523a	Substitution	3	77810997	77810997	-	-	-	-	-	T	C
PD7523a	Substitution	3	82432770	82432770	-	-	-	-	-	A	T
PD7523a	Substitution	3	82686466	82686466	-	-	-	-	-	A	T
PD7523a	Substitution	3	85100613	85100613	CADM2	ENST00000383699	Intronic	-	-	A	G
PD7523a	Substitution	3	85591345	85591345	CADM2	ENST00000383699	Intronic	-	-	A	G
PD7523a	Substitution	3	90364353	90364353	-	-	-	-	-	A	T
PD7523a	Substitution	3	94388870	94388870	-	-	-	-	-	A	G
PD7523a	Substitution	3	113433595	113433595	-	-	-	-	-	A	G
PD7523a	Substitution	3	115997101	115997101	LSAMP	CCDS2982.1	Intronic	-	-	C	T
PD7523a	Substitution	3	128224419	128224419	-	-	-	-	-	G	A
PD7523a	Substitution	3	134712098	134712098	EPHB1	CCDS46921.1	Intronic	-	-	C	A
PD7523a	Substitution	3	138673191	138673191	-	-	-	-	-	C	T
PD7523a	Substitution	3	140180350	140180350	CLSTN2	CCDS3112.1	Intronic	-	-	G	T
PD7523a	Indel	3	143541397	143541397	-	-	-	-	-	-	-
PD7523a	Substitution	3	143826521	143826521	-	-	-	-	-	A	G
PD7523a	Substitution	3	144308352	144308352	-	-	-	-	-	A	T
PD7523a	Substitution	3	160967553	160967553	NMD3	CCDS3194.1	Intronic	-	-	A	T
PD7523a	Substitution	3	161520069	161520069	-	-	-	-	-	A	T
PD7523a	Substitution	3	164159620	164159620	-	-	-	-	-	C	A
PD7523a	Substitution	3	164433240	164433240	-	-	-	-	-	A	T
PD7523a	Substitution	3	165921074	165921074	-	-	-	-	-	G	T
PD7523a	Substitution	3	173497315	173497315	NLGN1	CCDS3222.1	Intronic	-	-	A	G
PD7523a	Substitution	3	175236154	175236154	NAALADL2	CCDS46960.1	Intronic	-	-	T	A
PD7523a	Indel	3	178001350	178001353	-	-	-	-	-	-	-
PD7523a	Substitution	3	180014643	180014643	-	-	-	-	-	A	T
PD7523a	Substitution	3	181596343	181596343	-	-	-	-	-	G	T
PD7523a	Substitution	3	183329793	183329793	-	-	-	-	-	G	C
PD7523a	Substitution	4	9522854	9522854	-	-	-	-	-	T	C
PD7523a	Substitution	4	9653776	9653776	-	-	-	-	-	G	C
PD7523a	Indel	4	16942768	16942771	-	-	-	-	-	-	-
PD7523a	Substitution	4	18894882	18894882	-	-	-	-	-	T	A
PD7523a	Substitution	4	19732410	19732410	-	-	-	-	-	A	T
PD7523a	Substitution	4	36759402	36759402	-	-	-	-	-	T	A
PD7523a	Substitution	4	40029732	40029732	-	-	-	-	-	G	C
PD7523a	Substitution	4	41859473	41859473	-	-	-	-	-	C	T
PD7523a	Substitution	4	59028867	59028867	-	-	-	-	-	G	C
PD7523a	Substitution	4	59354739	59354739	-	-	-	-	-	T	C
PD7523a	Substitution	4	59591542	59591542	-	-	-	-	-	A	T
PD7523a	Substitution	4	59980487	59980487	-	-	-	-	-	A	G
PD7523a	Substitution	4	60032099	60032099	-	-	-	-	-	A	T
PD7523a	Substitution	4	61217947	61217947	-	-	-	-	-	T	C
PD7523a	Substitution	4	64676340	64676340	-	-	-	-	-	G	T
PD7523a	Substitution	4	66879354	66879354	-	-	-	-	-	C	A
PD7523a	Substitution	4	70079294	70079294	UGT2B11	CCDS3527.1	Intronic	-	-	A	G
PD7523a	Substitution	4	85573955	85573955	-	-	-	-	-	G	T
PD7523a	Substitution	4	97738150	97738150	-	-	-	-	-	A	T
PD7523a	Substitution	4	103366904	103366904	-	-	-	-	-	C	T
PD7523a	Substitution	4	112275694	112275694	-	-	-	-	-	T	A
PD7523a	Substitution	4	125728882	125728882	-	-	-	-	-	A	T

PD7523a	Substitution	4	128603057	128603057	INTU	CCDS34061.1	Intronic	-	-	-	T	A
PD7523a	Substitution	4	129478176	129478176	-	-	-	-	-	-	A	G
PD7523a	Substitution	4	134687955	134687955	-	-	-	-	-	-	A	G
PD7523a	Indel	4	136110550	136110551	-	-	-	-	-	-	-	-
PD7523a	Substitution	4	136267396	136267396	-	-	-	-	-	-	T	A
PD7523a	Substitution	4	144889958	144889958	-	-	-	-	-	-	T	C
PD7523a	Substitution	4	146226736	146226736	-	-	-	-	-	-	A	G
PD7523a	Substitution	4	146617976	146617976	C4orf51	CCDS47140.1	Intronic	-	-	-	C	T
PD7523a	Substitution	4	162363886	162363886	FSTL5	CCDS3802.1	Intronic	-	-	-	C	T
PD7523a	Substitution	4	165350597	165350597	-	-	-	-	-	-	G	T
PD7523a	Substitution	4	169617513	169617513	PALLD	CCDS34098.1	Intronic	-	-	-	A	T
PD7523a	Substitution	4	170692281	170692281	-	-	-	-	-	-	C	A
PD7523a	Substitution	4	171123436	171123436	-	-	-	-	-	-	C	T
PD7523a	Substitution	4	175039445	175039445	-	-	-	-	-	-	C	T
PD7523a	Substitution	4	176237578	176237578	-	-	-	-	-	-	C	T
PD7523a	Substitution	4	176700393	176700393	GPM6A	CCDS3824.1	Intronic	-	-	-	C	T
PD7523a	Substitution	4	179287330	179287330	-	-	-	-	-	-	A	G
PD7523a	Substitution	4	179626113	179626113	-	-	-	-	-	-	A	C
PD7523a	Substitution	4	184578111	184578111	RWDD4A	CCDS34111.1	Intronic	-	-	-	G	A
PD7523a	Substitution	4	185700767	185700767	ACSL1	CCDS3839.1	Intronic	-	-	-	G	A
PD7523a	Substitution	4	185796742	185796742	-	-	-	-	-	-	C	A
PD7523a	Substitution	5	11224839	11224839	CTNND2	CCDS3881.1	Intronic	-	-	-	C	T
PD7523a	Substitution	5	14318981	14318981	TRIO	CCDS3883.1	Intronic	-	-	-	G	T
PD7523a	Substitution	5	21786273	21786273	CDH12	CCDS3890.1	Intronic	-	-	-	C	A
PD7523a	Indel	5	21957617	21957617	-	-	-	-	-	-	-	-
PD7523a	Substitution	5	22295233	22295233	CDH12	CCDS3890.1	Intronic	-	-	-	G	T
PD7523a	Substitution	5	22363912	22363912	CDH12	CCDS3890.1	Intronic	-	-	-	T	G
PD7523a	Substitution	5	23743500	23743500	-	-	-	-	-	-	A	T
PD7523a	Substitution	5	29945612	29945612	-	-	-	-	-	-	A	G
PD7523a	Substitution	5	30844919	30844919	-	-	-	-	-	-	A	G
PD7523a	Substitution	5	32127774	32127774	GOLPH3	CCDS3896.1	Intronic	-	-	-	T	C
PD7523a	Substitution	5	32727398	32727398	NPR3	CCDS47196.1	Intronic	-	-	-	A	G
PD7523a	Substitution	5	32912231	32912231	-	-	-	-	-	-	G	T
PD7523a	Substitution	5	51163158	51163158	-	-	-	-	-	-	C	A
PD7523a	Substitution	5	51363032	51363032	ENSG00000248789	ENST00000510583	Intronic	-	-	-	G	T
PD7523a	Substitution	5	54947145	54947145	SLC38A9	CCDS3968.1	Intronic	-	-	-	C	A
PD7523a	Substitution	5	55547073	55547073	-	-	-	-	-	-	G	T
PD7523a	Substitution	5	57711880	57711880	-	-	-	-	-	-	T	A
PD7523a	Substitution	5	61208085	61208085	-	-	-	-	-	-	T	A
PD7523a	Substitution	5	61346887	61346887	-	-	-	-	-	-	C	G
PD7523a	Substitution	5	63050155	63050155	-	-	-	-	-	-	T	A
PD7523a	Substitution	5	72372512	72372512	FCH02	CCDS47230.1	Intronic	-	-	-	T	C
PD7523a	Substitution	5	76180941	76180941	S100Z	CCDS43333.1	Intronic	-	-	-	G	A
PD7523a	Substitution	5	77239218	77239218	-	-	-	-	-	-	G	A
PD7523a	Substitution	5	77900439	77900439	LHFPL2	CCDS4042.1	Intronic	-	-	-	T	C
PD7523a	Substitution	5	97111061	97111061	-	-	-	-	-	-	G	A
PD7523a	Substitution	5	106088057	106088057	-	-	-	-	-	-	C	A
PD7523a	Substitution	5	106115743	106115743	-	-	-	-	-	-	C	A
PD7523a	Substitution	5	106115744	106115744	-	-	-	-	-	-	A	T
PD7523a	Substitution	5	113579608	113579608	-	-	-	-	-	-	C	A
PD7523a	Substitution	5	117268911	117268911	-	-	-	-	-	-	C	A
PD7523a	Substitution	5	128837915	128837915	ADAMTS19	CCDS4146.1	Intronic	-	-	-	A	T
PD7523a	Substitution	5	130200292	130200292	-	-	-	-	-	-	A	G
PD7523a	Substitution	5	150853155	150853155	SLC36A1	CCDS4316.1	Intronic	-	-	-	C	T
PD7523a	Substitution	5	157966399	157966399	-	-	-	-	-	-	A	G
PD7523a	Substitution	5	164223586	164223586	-	-	-	-	-	-	C	T
PD7523a	Substitution	5	166697408	166697408	-	-	-	-	-	-	A	T
PD7523a	Substitution	5	170529393	170529393	RANBP17	CCDS34287.1	Intronic	-	-	-	A	G
PD7523a	Substitution	5	177441135	177441135	FAM153C	CCDS43407.1	Intronic	-	-	-	C	T
PD7523a	Substitution	6	6115835	6115835	-	-	-	-	-	-	A	T
PD7523a	Substitution	6	9818932	9818932	OFCC1	ENST00000460363	Intronic	-	-	-	C	T
PD7523a	Substitution	6	11825927	11825927	-	-	-	-	-	-	C	T
PD7523a	Substitution	6	19759062	19759062	-	-	-	-	-	-	A	C
PD7523a	Substitution	6	22554598	22554598	-	-	-	-	-	-	T	A
PD7523a	Substitution	6	24417191	24417191	MRS2	CCDS4552.1	Intronic	-	-	-	T	G
PD7523a	Substitution	6	31038755	31038755	-	-	-	-	-	-	T	A
PD7523a	Substitution	6	37471771	37471771	-	-	-	-	-	-	C	T
PD7523a	Substitution	6	51208928	51208928	-	-	-	-	-	-	A	G
PD7523a	Substitution	6	52724641	52724641	-	-	-	-	-	-	C	T
PD7523a	Substitution	6	57545254	57545254	-	-	-	-	-	-	G	T
PD7523a	Substitution	6	57855758	57855758	-	-	-	-	-	-	A	C
PD7523a	Substitution	6	65013944	65013944	EYS	CCDS47445.1	Intronic	-	-	-	G	A
PD7523a	Substitution	6	65836948	65836948	EYS	CCDS47445.1	Intronic	-	-	-	G	A
PD7523a	Substitution	6	67367012	67367012	-	-	-	-	-	-	A	G
PD7523a	Substitution	6	69200431	69200431	-	-	-	-	-	-	A	C
PD7523a	Substitution	6	70825101	70825101	COL19A1	CCDS4970.1	Intronic	-	-	-	G	A
PD7523a	Substitution	6	74506524	74506524	CD109	CCDS4982.1	Intronic	-	-	-	C	T
PD7523a	Substitution	6	75537725	75537725	-	-	-	-	-	-	A	T
PD7523a	Substitution	6	77045743	77045743	-	-	-	-	-	-	A	T
PD7523a	Substitution	6	77898598	77898598	-	-	-	-	-	-	G	A
PD7523a	Substitution	6	79546752	79546752	-	-	-	-	-	-	G	C
PD7523a	Substitution	6	80759833	80759833	-	-	-	-	-	-	A	C
PD7523a	Substitution	6	81589121	81589121	-	-	-	-	-	-	A	T
PD7523a	Substitution	6	86591650	86591650	-	-	-	-	-	-	A	G
PD7523a	Substitution	6	86724285	86724285	-	-	-	-	-	-	C	T
PD7523a	Substitution	6	91536487	91536487	-	-	-	-	-	-	G	A
PD7523a	Substitution	6	92618441	92618441	-	-	-	-	-	-	C	T
PD7523a	Substitution	6	94660881	94660881	-	-	-	-	-	-	T	A
PD7523a	Substitution	6	96876897	96876897	-	-	-	-	-	-	C	T
PD7523a	Substitution	6	104001652	104001652	-	-	-	-	-	-	A	G
PD7523a	Substitution	6	107330312	107330312	-	-	-	-	-	-	A	T
PD7523a	Substitution	6	111264240	111264240	-	-	-	-	-	-	A	C
PD7523a	Substitution	6	112309366	112309366	-	-	-	-	-	-	G	T
PD7523a	Substitution	6	113263128	113263128	-	-	-	-	-	-	C	A
PD7523a	Substitution	6	119043151	119043151	-	-	-	-	-	-	C	T
PD7523a	Substitution	6	124359063	124359063	NKAIN2	CCDS34526.1	Intronic	-	-	-	C	T
PD7523a	Indel	6	126237345	126237348	-	-	-	-	-	-	-	-
PD7523a	Substitution	6	127189916	127189916	-	-	-	-	-	-	G	T
PD7523a	Indel	6	132270507	132270509	CTGF	CCDS5151.1	r.1146_1148delc.945_947dup.K315delK	-	-	-	Deletion	-
PD7523a	Substitution	6	137902178	137902178	-	-	-	-	-	-	C	T
PD7523a	Substitution	6	137992416	137992416	-	-	-	-	-	-	C	G
PD7523a	Substitution	6	140023782	140023782	-	-	-	-	-	-	A	G
PD7523a	Substitution	6	141506440	141506440	-	-	-	-	-	-	G	A
PD7523a	Substitution	6	145423688	145423688	-	-	-	-	-	-	C	T
PD7523a	Substitution	6	150833576	150833576	-	-	-	-	-	-	G	A
PD7523a	Substitution	6	153957865	153957865	-	-	-	-	-	-	G	A
PD7523a	Substitution	6	153986727	153986727	-	-	-	-	-	-	A	C
PD7523a	Substitution	6	158712415	158712415	-	-	-	-	-	-	G	T
PD7523a	Substitution	6	166934795	166934795	RPS6KA2	CCDS5294.1	Intronic	-	-	-	C	T
PD7523a	Substitution	6	169928027	169928027	WDR27	CCDS47520.1	Intronic	-	-	-	C	G
PD7523a	Substitution	7	4741971	4741971	FOXX1	CCDS34591.1	Intronic	-	-	-	T	A

PD7523a	Substitution	7	4796617	4796617	FOXK1	CCDS34591.1	c.1051-8C>A	p.?	Splice	C	A
PD7523a	Substitution	7	13129536	13129536	-	-	-	-	-	C	T
PD7523a	Substitution	7	33076110	33076110	NT5C3	CCDS34617.1	Intronic	-	-	T	C
PD7523a	Substitution	7	33269098	33269098	BBS9	CCDS43566.1	Intronic	-	-	A	T
PD7523a	Substitution	7	36445998	36445998	ANLN	CCDS5447.1	c.696C>T	p.T232T	Silent	C	T
PD7523a	Indel	7	48426633	48426662	-	-	-	-	-	-	-
PD7523a	Substitution	7	48541200	48541200	ABCA13	CCDS47584.1	Intronic	-	-	G	T
PD7523a	Substitution	7	51922124	51922124	-	-	-	-	-	A	T
PD7523a	Substitution	7	52209794	52209794	-	-	-	-	-	G	T
PD7523a	Substitution	7	52624210	52624210	-	-	-	-	-	A	G
PD7523a	Substitution	7	53550164	53550164	-	-	-	-	-	A	G
PD7523a	Indel	7	53972247	53972253	-	-	-	-	-	-	-
PD7523a	Substitution	7	57529896	57529896	ZNF716	ENST00000420713	Non-coding	r.1841a>u	3prime UTR	A	T
PD7523a	Substitution	7	61832874	61832874	-	-	-	-	-	G	T
PD7523a	Substitution	7	67578245	67578245	-	-	-	-	-	G	C
PD7523a	Substitution	7	84562503	84562503	-	-	-	-	-	A	G
PD7523a	Substitution	7	94853596	94853596	PPP1R9A	CCDS34683.1	Intronic	-	-	G	T
PD7523a	Substitution	7	94853597	94853597	PPP1R9A	CCDS34683.1	Intronic	-	-	G	T
PD7523a	Substitution	7	97513084	97513084	-	-	-	-	-	C	T
PD7523a	Substitution	7	97545344	97545344	AC079781.1	ENST00000510081	Intronic	-	-	T	C
PD7523a	Substitution	7	107118330	107118330	COG5	CCDS5743.1	Intronic	-	-	T	C
PD7523a	Substitution	7	109054927	109054927	-	-	-	-	-	A	T
PD7523a	Substitution	7	109689911	109689911	-	-	-	-	-	G	T
PD7523a	Substitution	7	118923247	118923247	-	-	-	-	-	T	C
PD7523a	Substitution	7	130931250	130931250	MKLN1	ENST00000421797	Intronic	-	-	G	A
PD7523a	Substitution	7	137551573	137551573	-	-	-	-	-	G	A
PD7523a	Substitution	7	139497560	139497560	TBXAS1	CCDS5855.1	Intronic	-	-	A	T
PD7523a	Substitution	7	152781027	152781027	-	-	-	-	-	C	T
PD7523a	Substitution	7	155230006	155230006	-	-	-	-	-	T	C
PD7523a	Substitution	8	4166877	4166877	-	-	-	-	-	A	T
PD7523a	Substitution	8	10599895	10599895	SOX7	ENST00000354846	Intronic	-	-	G	A
PD7523a	Substitution	8	12752768	12752768	-	-	-	-	-	G	T
PD7523a	Substitution	8	12752769	12752769	-	-	-	-	-	A	T
PD7523a	Substitution	8	15527010	15527010	TUSC3	CCDS5993.1	Intronic	-	-	T	A
PD7523a	Substitution	8	19153387	19153387	-	-	-	-	-	G	A
PD7523a	Substitution	8	37167933	37167933	-	-	-	-	-	C	T
PD7523a	Substitution	8	37462542	37462542	-	-	-	-	-	G	A
PD7523a	Substitution	8	40102791	40102791	-	-	-	-	-	A	C
PD7523a	Substitution	8	55165684	55165684	-	-	-	-	-	G	A
PD7523a	Substitution	8	58902411	58902411	-	-	-	-	-	G	A
PD7523a	Substitution	8	61124496	61124496	CA8	CCDS6174.1	Intronic	-	-	A	T
PD7523a	Substitution	8	63294926	63294926	-	-	-	-	-	T	A
PD7523a	Indel	8	64578176	64578176	-	-	-	-	-	-	-
PD7523a	Substitution	8	66811504	66811504	-	-	-	-	-	G	A
PD7523a	Substitution	8	71716371	71716371	-	-	-	-	-	A	T
PD7523a	Substitution	8	78892509	78892509	-	-	-	-	-	C	G
PD7523a	Substitution	8	83628610	83628610	-	-	-	-	-	C	T
PD7523a	Substitution	8	84180304	84180304	-	-	-	-	-	C	T
PD7523a	Substitution	8	86524514	86524514	-	-	-	-	-	G	A
PD7523a	Substitution	8	89649503	89649503	-	-	-	-	-	G	C
PD7523a	Substitution	8	95085761	95085761	-	-	-	-	-	G	A
PD7523a	Substitution	8	98814546	98814546	LAPTM4B	CCDS6275.1	Intronic	-	-	A	G
PD7523a	Substitution	8	102776759	102776759	NCALD	CCDS6292.1	Intronic	-	-	G	A
PD7523a	Substitution	8	109359780	109359780	-	-	-	-	-	C	T
PD7523a	Substitution	8	111098612	111098612	-	-	-	-	-	T	A
PD7523a	Indel	8	111474265	111474266	-	-	-	-	-	-	-
PD7523a	Substitution	8	111669300	111669300	-	-	-	-	-	A	T
PD7523a	Substitution	8	114981347	114981347	-	-	-	-	-	A	T
PD7523a	Substitution	8	129657113	129657113	-	-	-	-	-	A	T
PD7523a	Substitution	8	129854549	129854549	-	-	-	-	-	A	T
PD7523a	Substitution	8	132402028	132402028	-	-	-	-	-	A	C
PD7523a	Substitution	8	132673146	132673146	-	-	-	-	-	C	A
PD7523a	Substitution	9	1655253	1655253	-	-	-	-	-	C	T
PD7523a	Substitution	9	7944009	7944009	-	-	-	-	-	C	T
PD7523a	Substitution	9	11207072	11207072	-	-	-	-	-	A	G
PD7523a	Substitution	9	11959645	11959645	-	-	-	-	-	C	A
PD7523a	Substitution	9	22194106	22194106	-	-	-	-	-	A	G
PD7523a	Substitution	9	24057508	24057508	-	-	-	-	-	T	A
PD7523a	Substitution	9	29931487	29931487	-	-	-	-	-	C	G
PD7523a	Substitution	9	29931497	29931497	-	-	-	-	-	G	A
PD7523a	Substitution	9	29931498	29931498	-	-	-	-	-	G	T
PD7523a	Substitution	9	30168202	30168202	-	-	-	-	-	T	C
PD7523a	Substitution	9	30740261	30740261	-	-	-	-	-	C	G
PD7523a	Substitution	9	32986304	32986304	APTX	CCDS6532.1	Intronic	-	-	C	T
PD7523a	Substitution	9	39115199	39115199	CNTNAP3	CCDS6616.1	Intronic	-	-	C	T
PD7523a	Substitution	9	46874109	46874109	-	-	-	-	-	C	T
PD7523a	Substitution	9	68742530	68742530	-	-	-	-	-	C	G
PD7523a	Substitution	9	76441447	76441447	-	-	-	-	-	T	C
PD7523a	Substitution	9	85596100	85596100	RASEF	CCDS6662.1	Non-coding	r.3976c>u	3prime UTR	G	A
PD7523a	Substitution	9	87891773	87891773	-	-	-	-	-	A	T
PD7523a	Substitution	9	93255081	93255081	-	-	-	-	-	A	T
PD7523a	Substitution	9	103607331	103607331	-	-	-	-	-	C	T
PD7523a	Indel	9	104991003	104991003	-	-	-	-	-	-	-
PD7523a	Substitution	9	105619390	105619390	-	-	-	-	-	A	C
PD7523a	Substitution	9	107402722	107402722	-	-	-	-	-	T	G
PD7523a	Substitution	9	109387148	109387148	-	-	-	-	-	T	C
PD7523a	Substitution	9	117088890	117088890	-	-	-	-	-	G	A
PD7523a	Substitution	9	134883514	134883514	MED27	CCDS6945.1	Intronic	-	-	T	C
PD7523a	Substitution	9	135318081	135318081	C9orf171	CCDS6949.1	Intronic	-	-	G	A
PD7523a	Substitution	9	135505472	135505472	DDX31	CCDS6951.1	Intronic	-	-	C	T
PD7523a	Substitution	10	2212377	2212377	-	-	-	-	-	C	A
PD7523a	Substitution	10	2837119	2837119	ENSG00000214531	ENST00000398522	Intronic	-	-	A	C
PD7523a	Substitution	10	5350356	5350356	-	-	-	-	-	A	G
PD7523a	Substitution	10	7034099	7034099	-	-	-	-	-	C	T
PD7523a	Substitution	10	8477664	8477664	-	-	-	-	-	A	T
PD7523a	Substitution	10	9454897	9454897	-	-	-	-	-	A	C
PD7523a	Substitution	10	17346718	17346718	-	-	-	-	-	C	T
PD7523a	Substitution	10	18459912	18459912	CACNB2	CCDS7127.1	Intronic	-	-	T	G
PD7523a	Substitution	10	27570056	27570056	-	-	-	-	-	A	G
PD7523a	Indel	10	31188514	31188514	-	-	-	-	-	-	-
PD7523a	Substitution	10	33112526	33112526	C10orf68	CCDS31177.1	Intronic	-	-	G	T
PD7523a	Substitution	10	33715107	33715107	-	-	-	-	-	T	A
PD7523a	Substitution	10	55190880	55190880	-	-	-	-	-	T	A
PD7523a	Substitution	10	55910670	55910670	PCDH15	CCDS44404.1	Intronic	-	-	T	A
PD7523a	Substitution	10	58487592	58487592	-	-	-	-	-	A	T
PD7523a	Substitution	10	59341772	59341772	-	-	-	-	-	C	T
PD7523a	Indel	10	59538536	59538537	-	-	-	-	-	-	-
PD7523a	Substitution	10	62803294	62803294	-	-	-	-	-	C	T
PD7523a	Substitution	10	65253708	65253708	-	-	-	-	-	T	C
PD7523a	Substitution	10	81420305	81420305	-	-	-	-	-	G	T
PD7523a	Substitution	10	85077284	85077284	-	-	-	-	-	G	T

PD7523a	Substitution	16	1888120	1888120	FAHD1	CCDS32367.1	c.740G>A	p.R247H	Missense	G	A
PD7523a	Substitution	16	3519261	3519261	NAT15	CCDS45396.1	Intronic	-	-	A	G
PD7523a	Substitution	16	16773048	16773048	-	-	-	-	-	T	A
PD7523a	Substitution	16	26879253	26879253	-	-	-	-	-	G	A
PD7523a	Substitution	16	34765592	34765592	-	-	-	-	-	G	T
PD7523a	Substitution	16	49279743	49279743	-	-	-	-	-	G	A
PD7523a	Substitution	16	50267908	50267908	PAPD5	ENST00000436909	Non-coding	r.6766c>u	3prime UTR	C	T
PD7523a	Substitution	16	54276257	54276257	-	-	-	-	-	G	A
PD7523a	Substitution	16	54562451	54562451	ENSG00000227093	ENST00000449142	Intronic	-	-	A	C
PD7523a	Substitution	16	56270608	56270608	GNAO1	CCDS10756.1	Intronic	-	-	T	G
PD7523a	Substitution	16	64814446	64814446	-	-	-	-	-	G	T
PD7523a	Substitution	16	65447846	65447846	AC009055.1	ENST00000505989	Intronic	-	-	C	T
PD7523a	Substitution	16	76095103	76095103	-	-	-	-	-	C	T
PD7523a	Substitution	16	83078781	83078781	CDH13	ENST00000268613	Intronic	-	-	T	A
PD7523a	Substitution	16	88300884	88300884	-	-	-	-	-	C	G
PD7523a	Substitution	17	4673675	4673675	-	-	-	-	-	T	A
PD7523a	Indel	17	16128600	16128600	-	-	-	-	-	-	-
PD7523a	Substitution	17	27586229	27586229	NUFIP2	CCDS32600.1	Non-coding	r.7505g>a	3prime UTR	C	T
PD7523a	Substitution	17	30313506	30313506	SUZ12P	CCDS11270.1	Intronic	-	-	C	G
PD7523a	Substitution	17	34461606	34461606	-	-	-	-	-	G	A
PD7523a	Substitution	17	40749046	40749046	FAM134C	CCDS11432.1	Intronic	-	-	T	A
PD7523a	Substitution	17	43457160	43457160	-	-	-	-	-	C	T
PD7523a	Substitution	17	46859680	46859680	TTL6	CCDS45724.1	Intronic	-	-	C	T
PD7523a	Substitution	17	48437700	48437700	XYLT2	CCDS11563.1	Non-coding	r.2695c>u	3prime UTR	C	T
PD7523a	Substitution	17	49612508	49612508	-	-	-	-	-	G	A
PD7523a	Substitution	17	49633661	49633661	-	-	-	-	-	G	A
PD7523a	Substitution	17	51829995	51829995	-	-	-	-	-	C	T
PD7523a	Substitution	17	52514960	52514960	-	-	-	-	-	A	T
PD7523a	Substitution	17	56466183	56466183	RNF43	CCDS11607.1	Intronic	-	-	T	C
PD7523a	Substitution	17	57728342	57728342	CLTC	CCDS32696.1	Intronic	-	-	A	T
PD7523a	Substitution	17	69318029	69318029	-	-	-	-	-	C	T
PD7523a	Substitution	17	72319162	72319162	-	-	-	-	-	C	T
PD7523a	Substitution	17	73421513	73421513	-	-	-	-	-	G	A
PD7523a	Substitution	17	77128819	77128819	ENSG00000167281	CCDS45805.1	Intronic	-	-	C	T
PD7523a	Substitution	18	2269347	2269347	-	-	-	-	-	G	A
PD7523a	Substitution	18	4226021	4226021	-	-	-	-	-	A	T
PD7523a	Substitution	18	12178615	12178615	-	-	-	-	-	A	G
PD7523a	Indel	18	14128722	14128722	-	-	-	-	-	-	-
PD7523a	Substitution	18	26736184	26736184	-	-	-	-	-	A	G
PD7523a	Substitution	18	31620978	31620978	NOL4	CCDS11907.2	Intronic	-	-	G	A
PD7523a	Substitution	18	42204723	42204723	-	-	-	-	-	G	A
PD7523a	Substitution	18	45595700	45595700	-	-	-	-	-	C	T
PD7523a	Substitution	18	56217408	56217408	ALPK2	CCDS11966.2	Intronic	-	-	A	T
PD7523a	Substitution	18	62601226	62601226	-	-	-	-	-	T	A
PD7523a	Substitution	18	67259025	67259025	DOK6	CCDS32841.1	Intronic	-	-	G	A
PD7523a	Substitution	18	69889811	69889811	-	-	-	-	-	C	T
PD7523a	Substitution	19	6119893	6119893	-	-	-	-	-	C	T
PD7523a	Substitution	19	32272177	32272177	-	-	-	-	-	T	G
PD7523a	Substitution	19	38229418	38229418	ZNF573	CCDS12508.1	c.1799G>T	p.R600I	Missense	C	A
PD7523a	Substitution	19	44466709	44466709	ZNF230	CCDS12633.1	Intronic	-	-	C	G
PD7523a	Substitution	19	50579005	50579005	-	-	-	-	-	G	A
PD7523a	Substitution	19	57338056	57338056	PEG3AS	CCDS12948.1	Intronic	-	-	C	T
PD7523a	Substitution	20	7377051	7377051	-	-	-	-	-	C	T
PD7523a	Substitution	20	8551678	8551678	PLCB1	CCDS13103.1	Intronic	-	-	G	A
PD7523a	Substitution	20	9126589	9126589	PLCB4	CCDS13104.1	Intronic	-	-	T	C
PD7523a	Substitution	20	10297976	10297976	-	-	-	-	-	G	C
PD7523a	Substitution	20	18835307	18835307	-	-	-	-	-	C	A
PD7523a	Substitution	20	19842258	19842258	-	-	-	-	-	A	G
PD7523a	Substitution	20	20455591	20455591	RALGAP2	CCDS46584.1	Intronic	-	-	C	T
PD7523a	Substitution	20	23687689	23687689	-	-	-	-	-	A	T
PD7523a	Substitution	20	39230023	39230023	-	-	-	-	-	C	G
PD7523a	Substitution	20	41620046	41620046	PTPRT	CCDS42874.1	Intronic	-	-	G	A
PD7523a	Substitution	20	48525648	48525648	SPATA2	CCDS13422.1	Intronic	-	-	C	T
PD7523a	Substitution	20	49296592	49296592	FAM65C	CCDS13431.2	Intronic	-	-	C	T
PD7523a	Substitution	21	20415017	20415017	-	-	-	-	-	T	A
PD7523a	Substitution	21	23214521	23214521	-	-	-	-	-	C	T
PD7523a	Substitution	21	28543429	28543429	-	-	-	-	-	A	G
PD7523a	Substitution	21	28988004	28988004	-	-	-	-	-	C	A
PD7523a	Substitution	22	23379662	23379662	-	-	-	-	-	C	T
PD7523a	Substitution	22	23786002	23786002	-	-	-	-	-	A	G
PD7523a	Substitution	22	25073241	25073241	-	-	-	-	-	G	C
PD7523a	Substitution	22	34588084	34588084	-	-	-	-	-	G	T
PD7523a	Substitution	22	37840820	37840820	-	-	-	-	-	C	T
PD7523a	Substitution	22	38544060	38544060	PLA2G6	CCDS13967.1	Intronic	-	-	A	C
PD7523a	Substitution	22	45140464	45140464	PRRS-ARHGAP8	ENST00000352766	Intronic	-	-	G	C
PD7523a	Substitution	X	5633579	5633579	-	-	-	-	-	G	A
PD7523a	Substitution	X	7682956	7682956	-	-	-	-	-	T	A
PD7523a	Substitution	X	15065509	15065509	-	-	-	-	-	T	C
PD7523a	Substitution	X	25265834	25265834	-	-	-	-	-	G	A
PD7523a	Substitution	X	31902521	31902521	DMD	CCDS14233.1	Intronic	-	-	A	G
PD7523a	Substitution	X	33025161	33025161	DMD	CCDS14233.1	Intronic	-	-	C	T
PD7523a	Substitution	X	34486016	34486016	-	-	-	-	-	A	G
PD7523a	Substitution	X	36103964	36103964	CXorf59	CCDS14238.1	Intronic	-	-	T	C
PD7523a	Substitution	X	55160846	55160846	-	-	-	-	-	T	C
PD7523a	Substitution	X	56346795	56346795	-	-	-	-	-	T	C
PD7523a	Substitution	X	78713183	78713183	-	-	-	-	-	T	C
PD7523a	Substitution	X	89991438	89991438	-	-	-	-	-	G	A
PD7523a	Substitution	X	92440025	92440025	-	-	-	-	-	T	A
PD7523a	Substitution	X	93490895	93490895	-	-	-	-	-	T	A
PD7523a	Substitution	X	94161634	94161634	-	-	-	-	-	A	C
PD7523a	Substitution	X	94522655	94522655	-	-	-	-	-	G	A
PD7523a	Substitution	X	96461439	96461439	DIAPH2	CCDS14467.1	Intronic	-	-	A	G
PD7523a	Substitution	X	97389656	97389656	-	-	-	-	-	T	A
PD7523a	Substitution	X	108310508	108310508	-	-	-	-	-	A	T
PD7523a	Substitution	X	110724082	110724082	-	-	-	-	-	G	A
PD7523a	Substitution	X	116904883	116904883	-	-	-	-	-	C	G
PD7523a	Substitution	X	140993840	140993840	MAGEC1	CCDS35417.1	c.650C>T	p.S217F	Missense	C	T
PD7523a	Substitution	X	144516714	144516714	-	-	-	-	-	T	C
PD7523a	Substitution	X	146023088	146023088	-	-	-	-	-	A	C
PD7523a	Substitution	Y	4016039	4016039	-	-	-	-	-	G	A
PD7523a	Substitution	Y	14316304	14316304	-	-	-	-	-	G	A