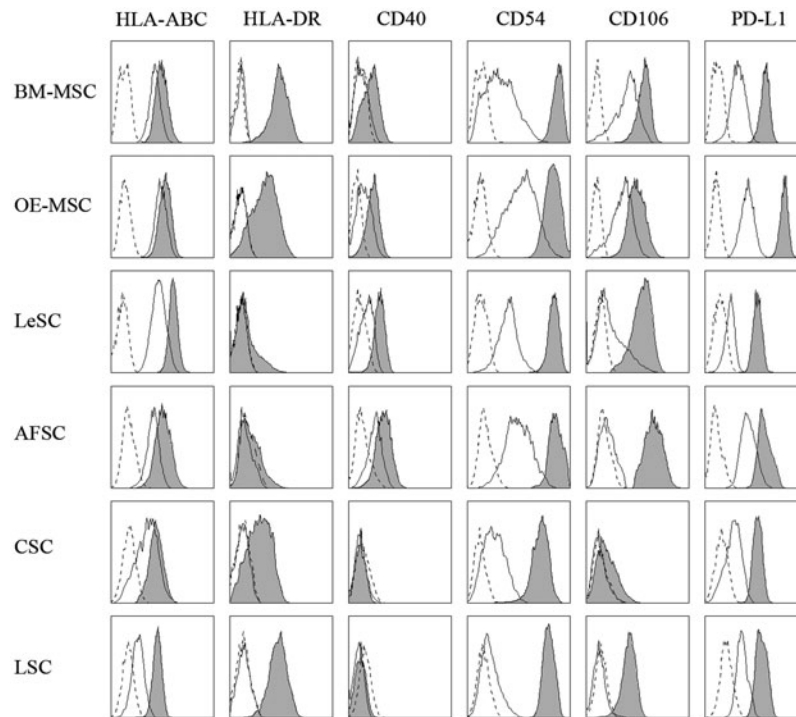


Supplementary Data



SUPPLEMENTARY FIG. S1. Expression of different markers on various human stem cells (SCs) in resting and primed conditions. Representative FACS analysis of different SC types showing the expression of HLA-ABC, HLA-DR, CD40, CD54 (ICAM-1), CD106 (VCAM-1), and CD274 (PD-L1) at resting and inflammatory conditions. *Dashed curve* indicates the isotype controls, while *open* and *filled curves* indicate resting and primed SCs, respectively.