

Figure 2G

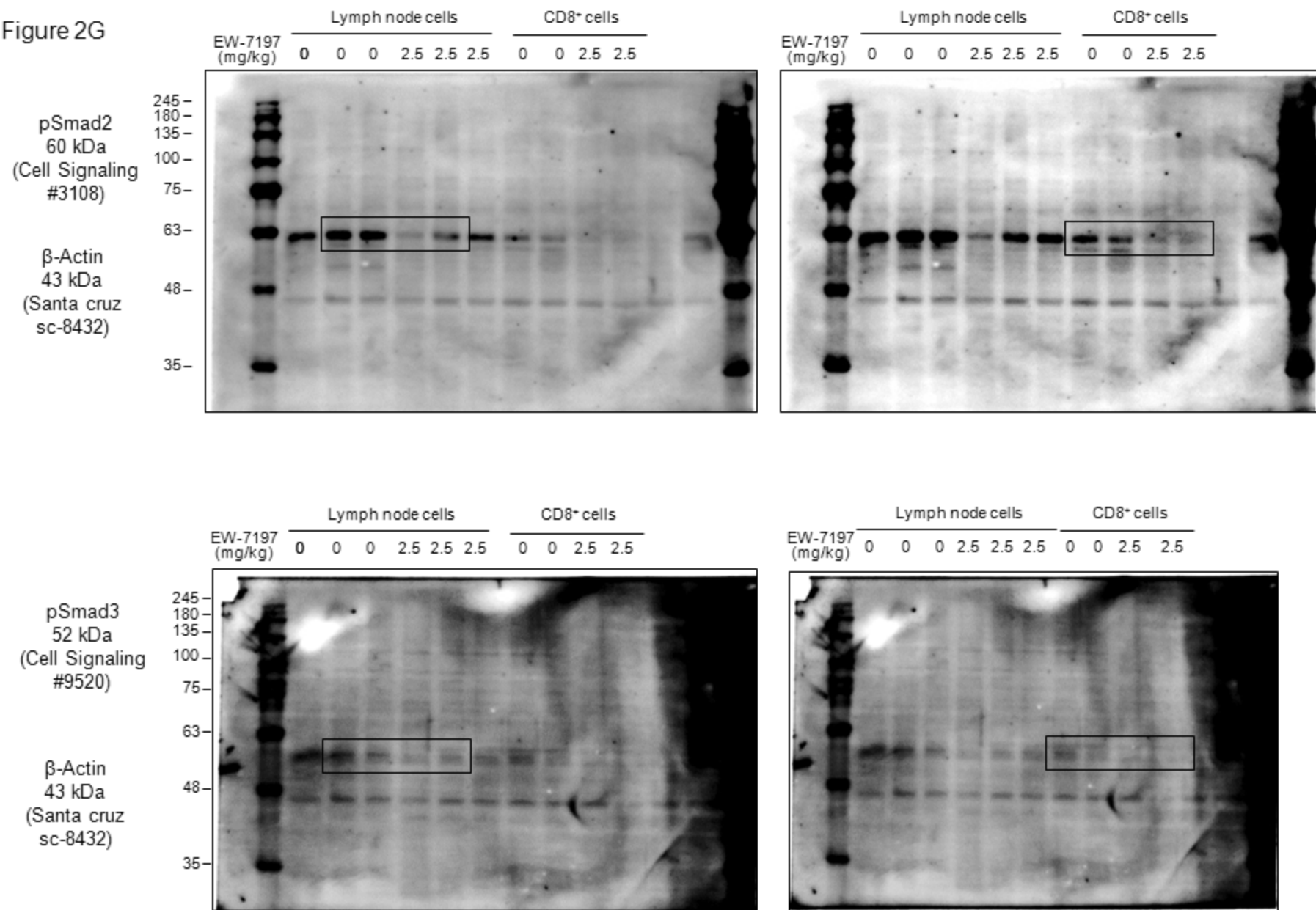


Figure 2G

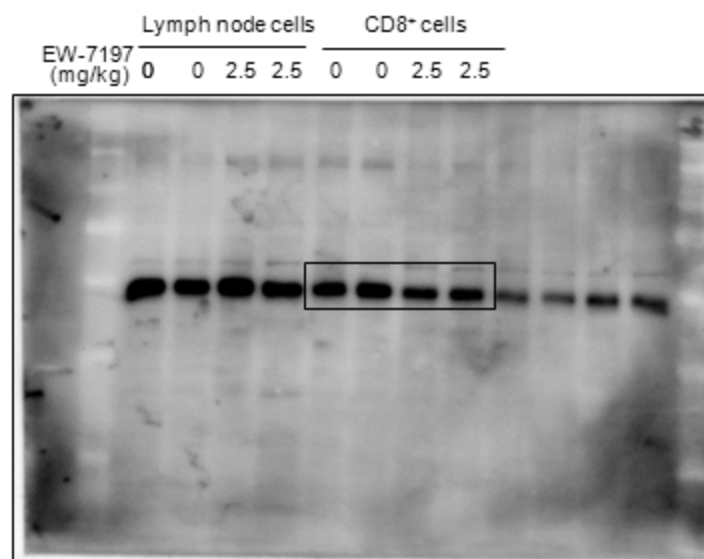
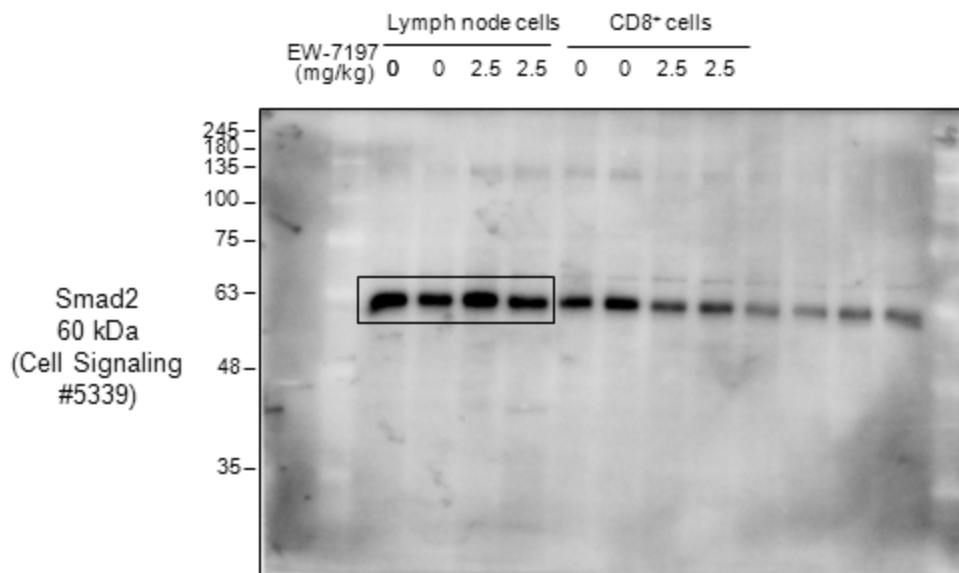
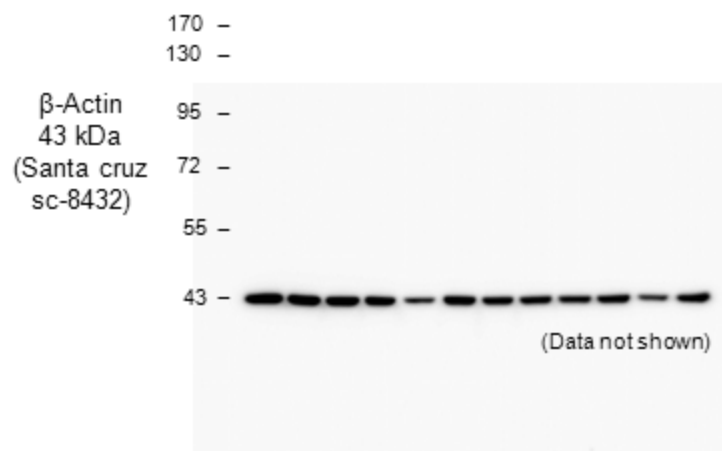
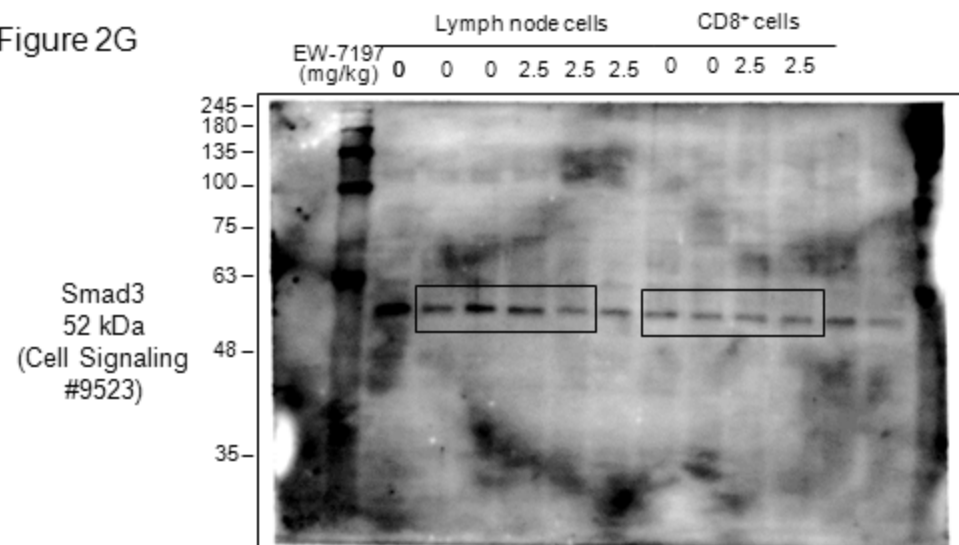


Figure 2G

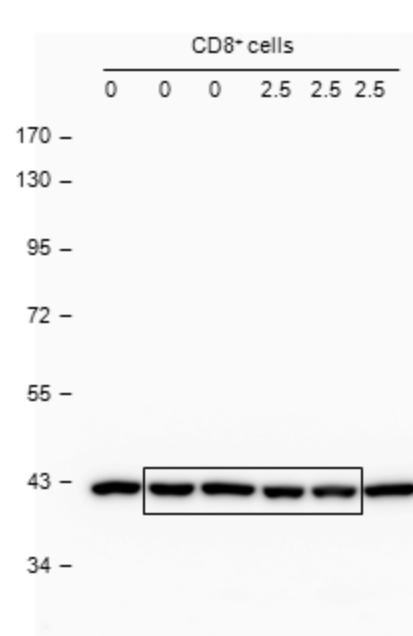
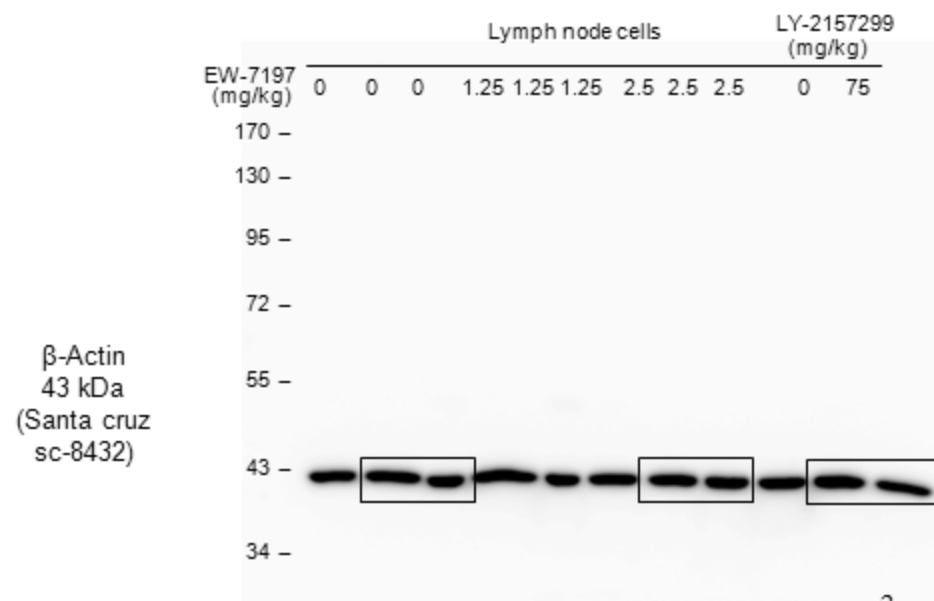
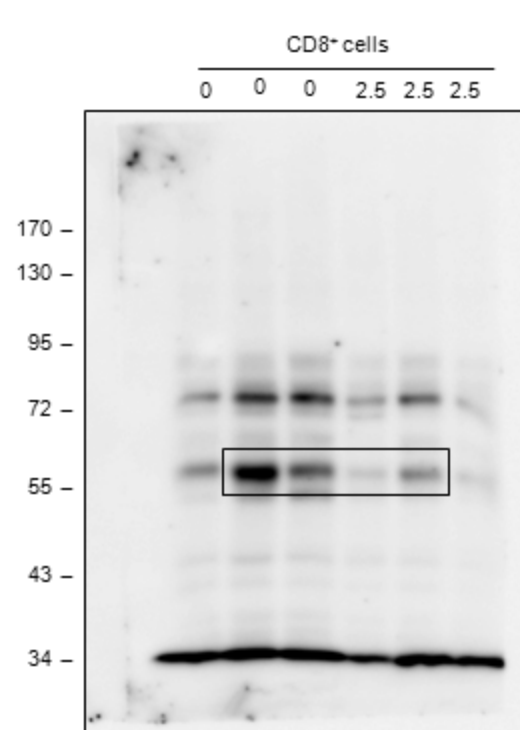
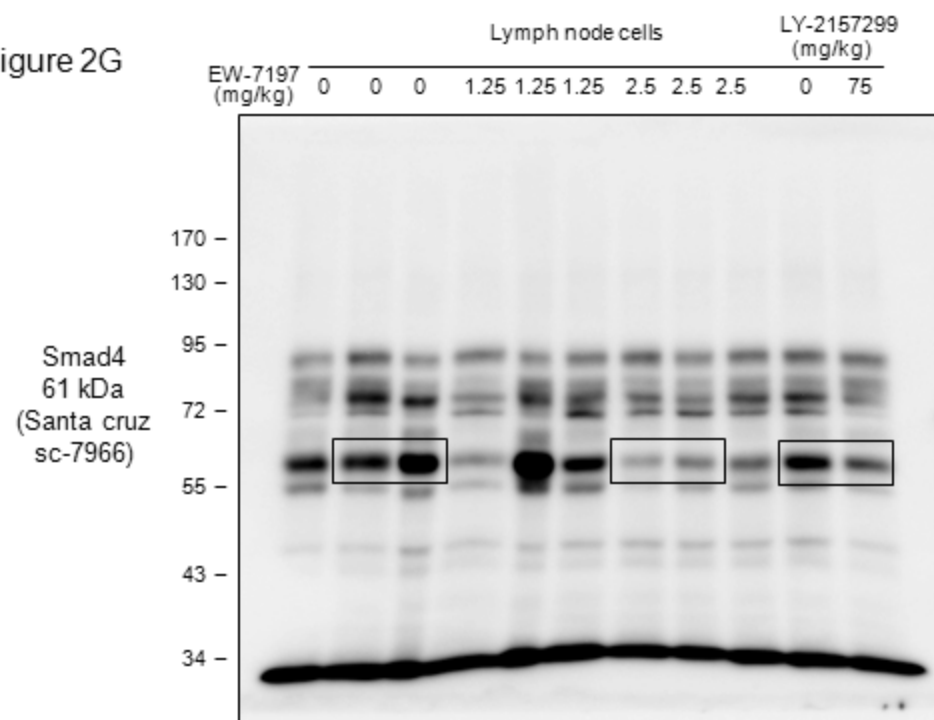


Figure 3B

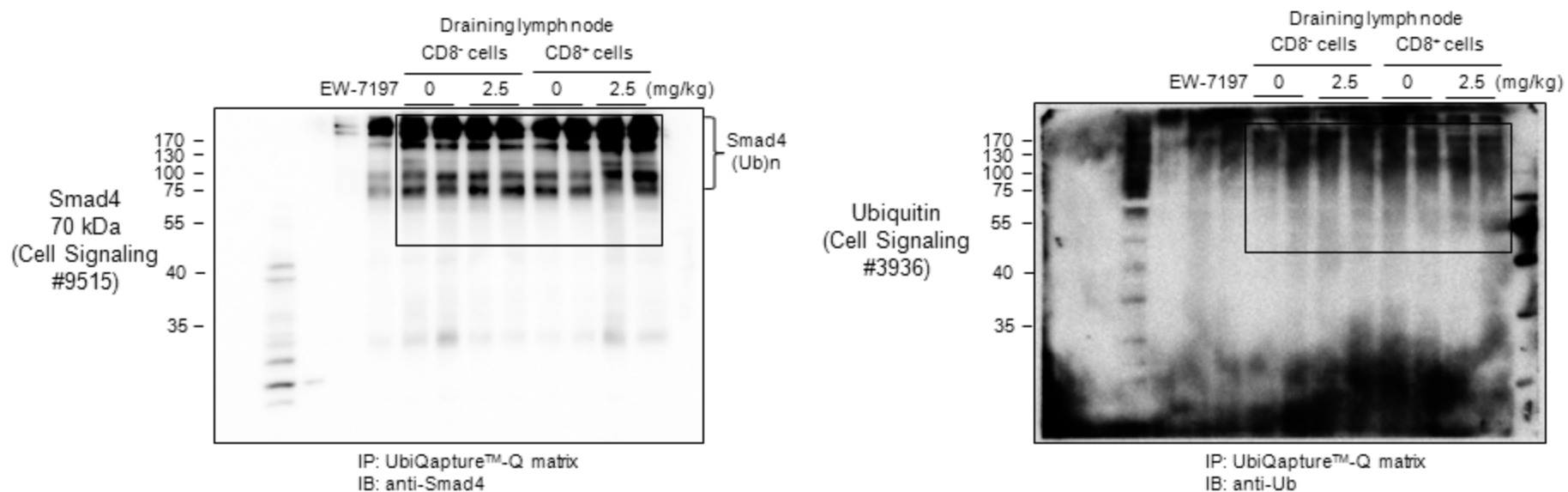
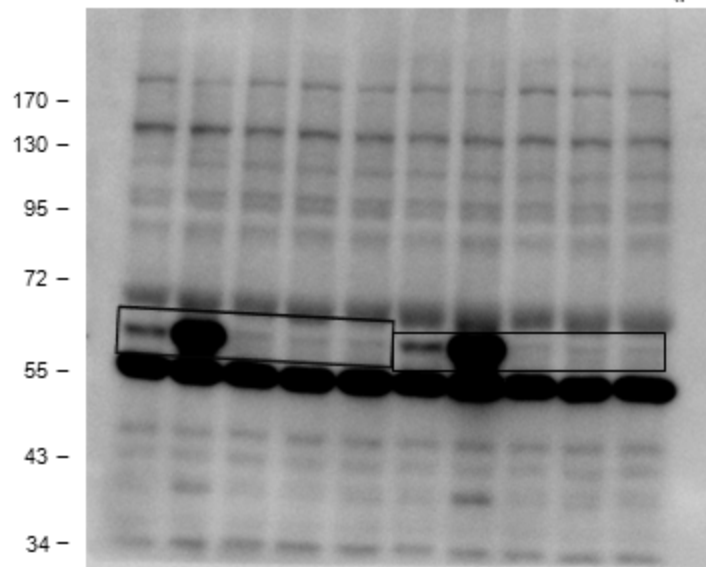


Figure 3C

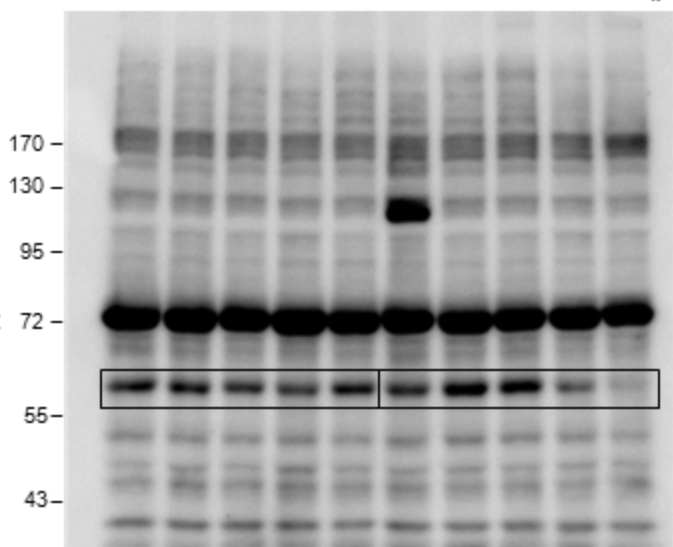
	CD4 <sup>+</sup> cells					CD8 <sup>+</sup> cells					
EW-7197	0	0	0.5	1.0	2.0	0	0	0.5	1.0	2.0	( $\mu$ M)
TGF- $\beta$	0	5.0	0	0	0	0	5.0	0	0	0	(ng/mL)
MG-132	0	0	0	0	0	0	0	0	0	0	( $\mu$ M)

pSmad2  
60 kDa  
(Cell Signaling  
#3108)



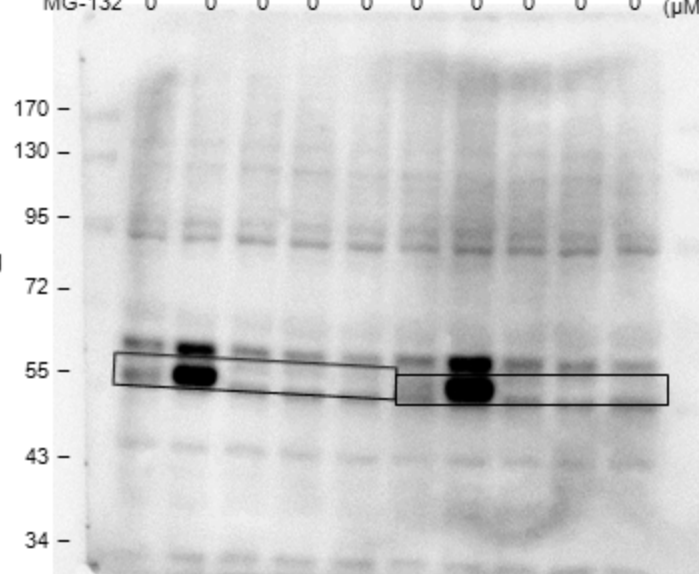
	CD4 <sup>+</sup> cells					CD8 <sup>+</sup> cells					
EW-7197	0	0	0.5	1.0	2.0	0	0	0.5	1.0	2.0	( $\mu$ M)
TGF- $\beta$	0	5.0	0	0	0	0	5.0	0	0	0	(ng/mL)
MG-132	0	0	0	0	0	0	0	0	0	0	( $\mu$ M)

Smad4  
61 kDa  
(Santa cruz  
sc-7966)



	CD4 <sup>+</sup> cells					CD8 <sup>+</sup> cells					
EW-7197	0	0	0.5	1.0	2.0	0	0	0.5	1.0	2.0	( $\mu$ M)
TGF- $\beta$	0	5.0	0	0	0	0	5.0	0	0	0	(ng/mL)
MG-132	0	0	0	0	0	0	0	0	0	0	( $\mu$ M)

pSmad3  
52 kDa  
(Cell Signaling  
#9520)



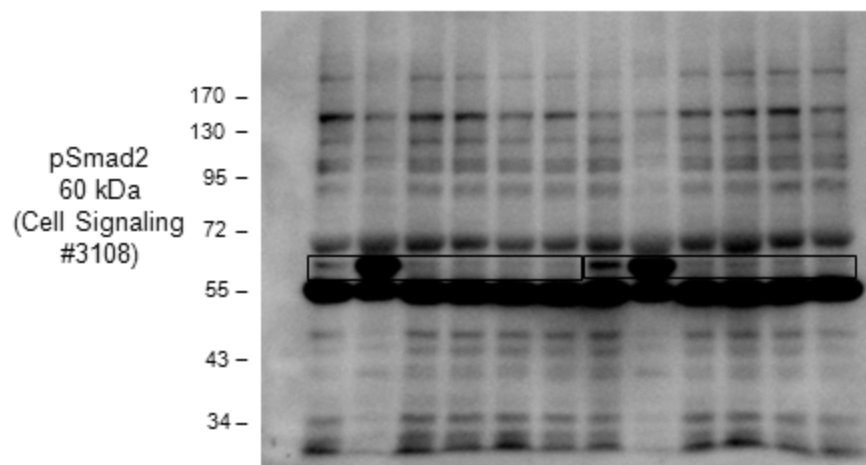
	CD4 <sup>+</sup> cells					CD8 <sup>+</sup> cells					
EW-7197	0	0	0.5	1.0	2.0	0	0	0.5	1.0	2.0	( $\mu$ M)
TGF- $\beta$	0	5.0	0	0	0	0	5.0	0	0	0	(ng/mL)
MG-132	0	0	0	0	0	0	0	0	0	0	( $\mu$ M)

$\beta$ -Actin  
43 kDa  
(Santa cruz  
sc-8432)

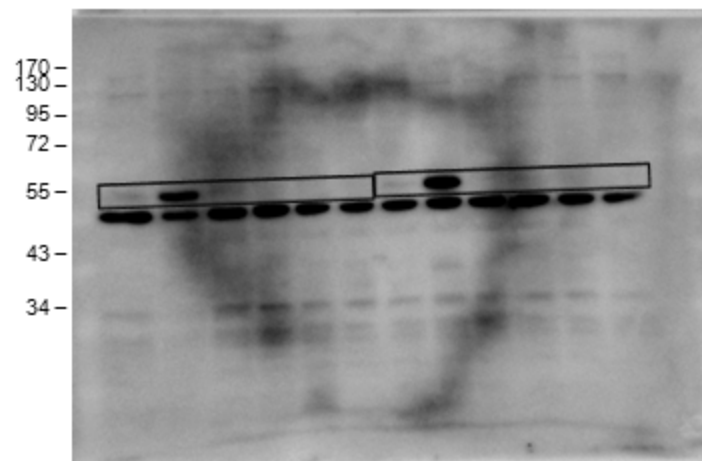


Figure 3C

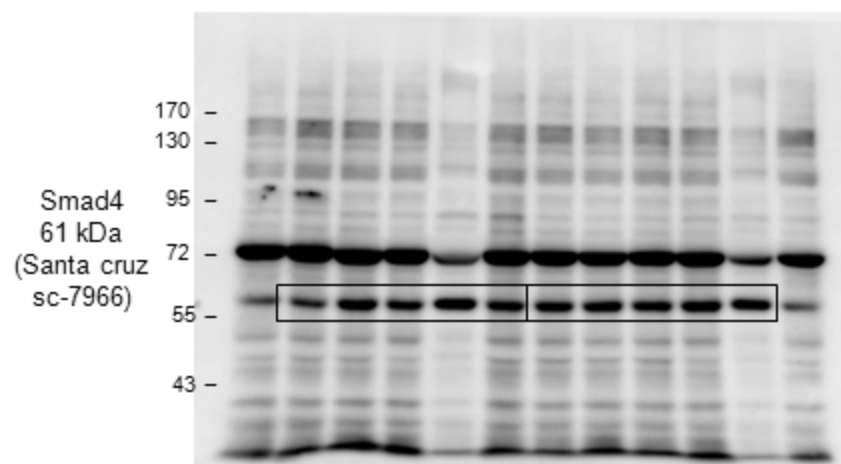
	CD4 <sup>+</sup> cells					CD8 <sup>+</sup> cells					
EW-7197	0	0	0.5	1.0	2.0	0	0	0.5	1.0	2.0	( $\mu$ M)
TGF- $\beta$	0	5.0	0	0	0	0	5.0	0	0	0	(ng/mL)
MG-132	5.0	5.0	5.0	5.0	5.0	5.0	5.0	5.0	5.0	5.0	( $\mu$ M)



	CD4 <sup>+</sup> cells					CD8 <sup>+</sup> cells					
EW-7197	0	0	0.5	1.0	2.0	0	0	0.5	1.0	2.0	( $\mu$ M)
TGF- $\beta$	0	5.0	0	0	0	0	5.0	0	0	0	(ng/mL)
MG-132	5.0	5.0	5.0	5.0	5.0	5.0	5.0	5.0	5.0	5.0	( $\mu$ M)



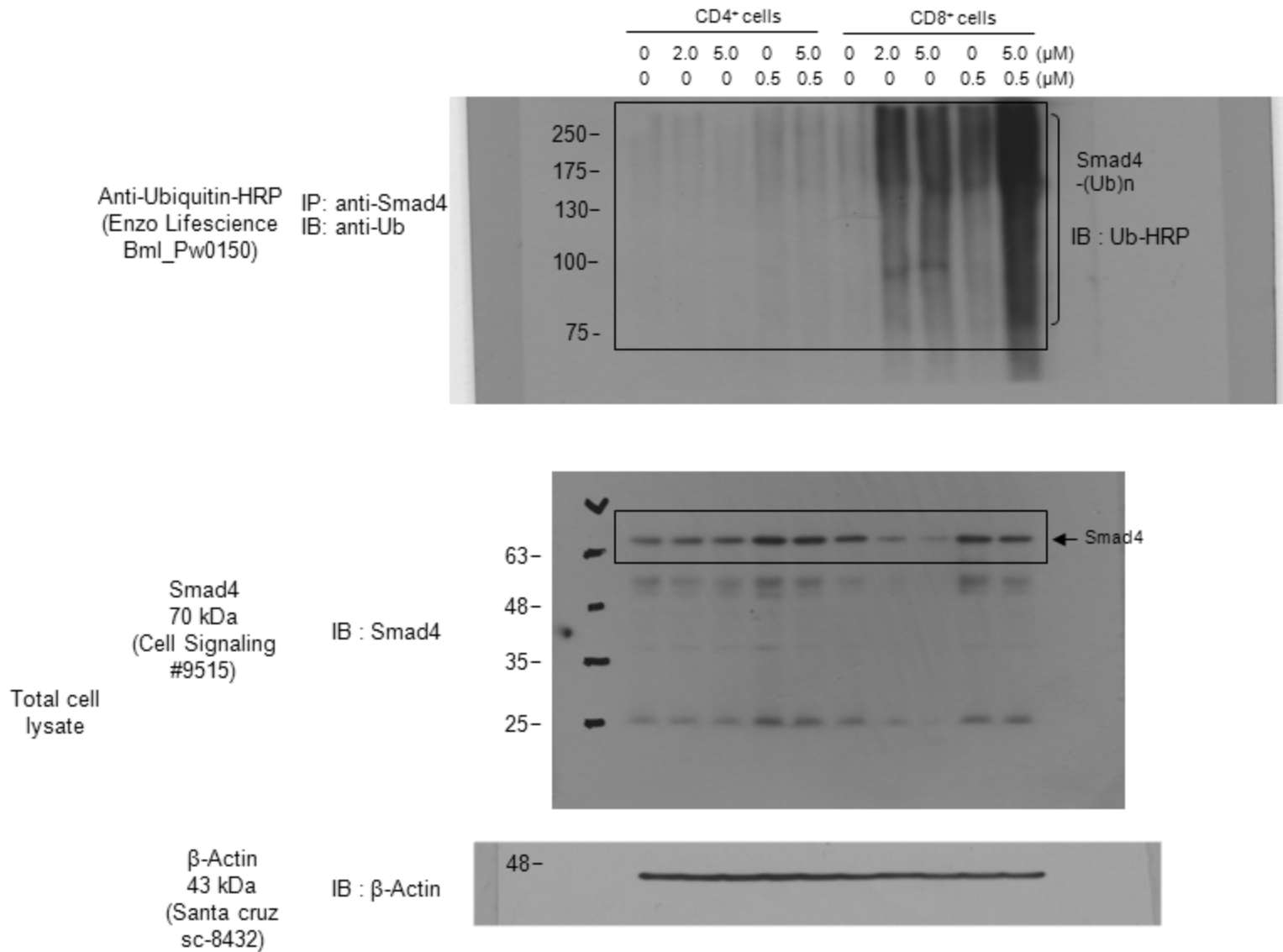
	CD4 <sup>+</sup> cells					CD8 <sup>+</sup> cells					
EW-7197	0	0	0.5	1.0	2.0	0	0	0.5	1.0	2.0	( $\mu$ M)
TGF- $\beta$	0	5.0	0	0	0	0	5.0	0	0	0	(ng/mL)
MG-132	5.0	5.0	5.0	5.0	5.0	5.0	5.0	5.0	5.0	5.0	( $\mu$ M)



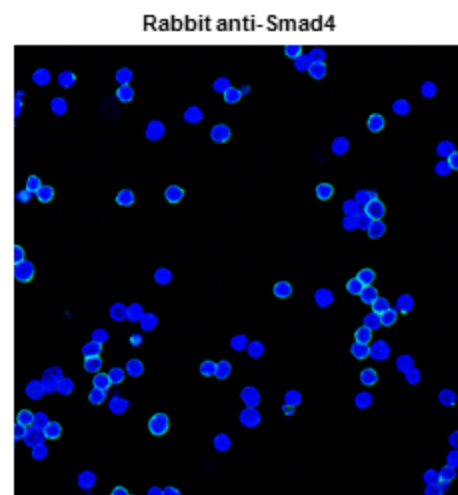
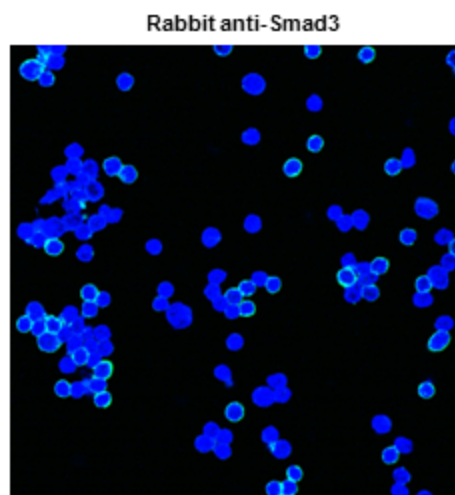
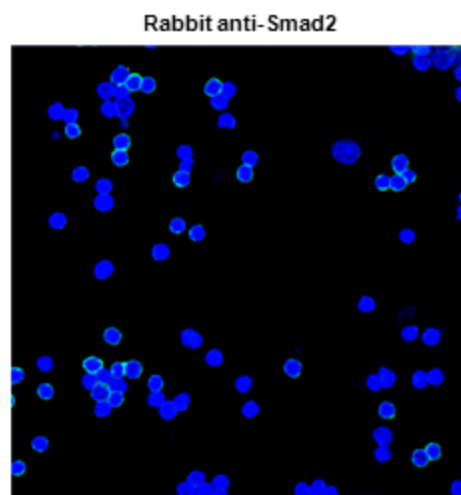
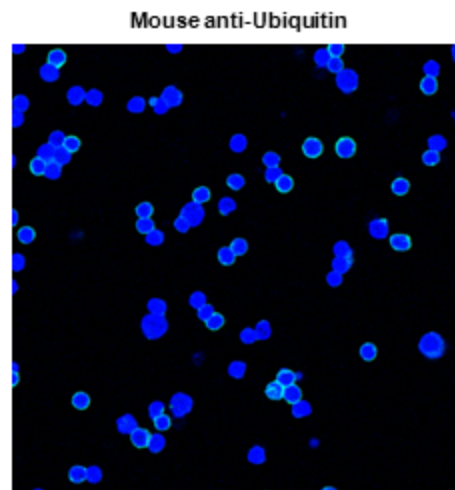
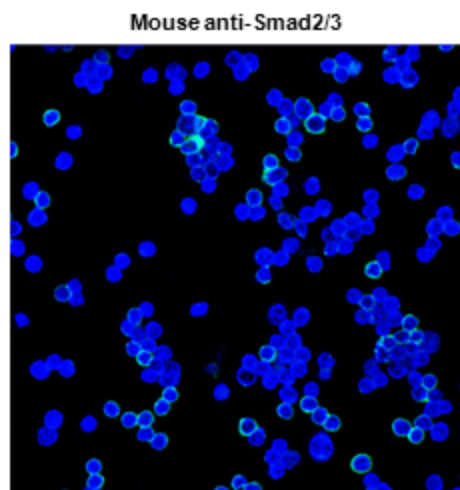
	CD4 <sup>+</sup> cells					CD8 <sup>+</sup> cells					
EW-7197	0	0	0.5	1.0	2.0	0	0	0.5	1.0	2.0	( $\mu$ M)
TGF- $\beta$	0	5.0	0	0	0	0	5.0	0	0	0	(ng/mL)
MG-132	5.0	5.0	5.0	5.0	5.0	5.0	5.0	5.0	5.0	5.0	( $\mu$ M)



Figure 3D



Combination with PLA probe anti-rabbit PLUS, PLA probe anti-mouse MINUS and rat anti-CD8 antibody  
(Technical negative controls for Figure 2E, 3A and Supporting Information Figure 7)



10  $\mu$ m



Supporting Information Figure 14

