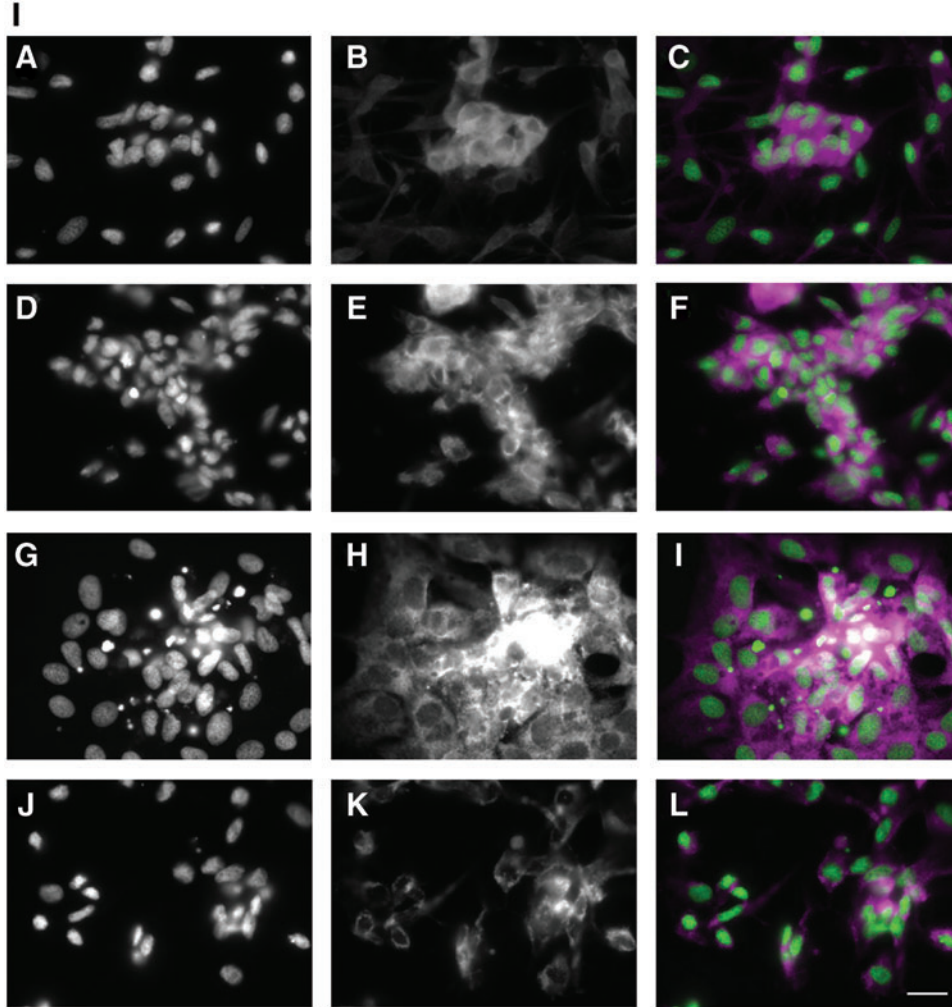
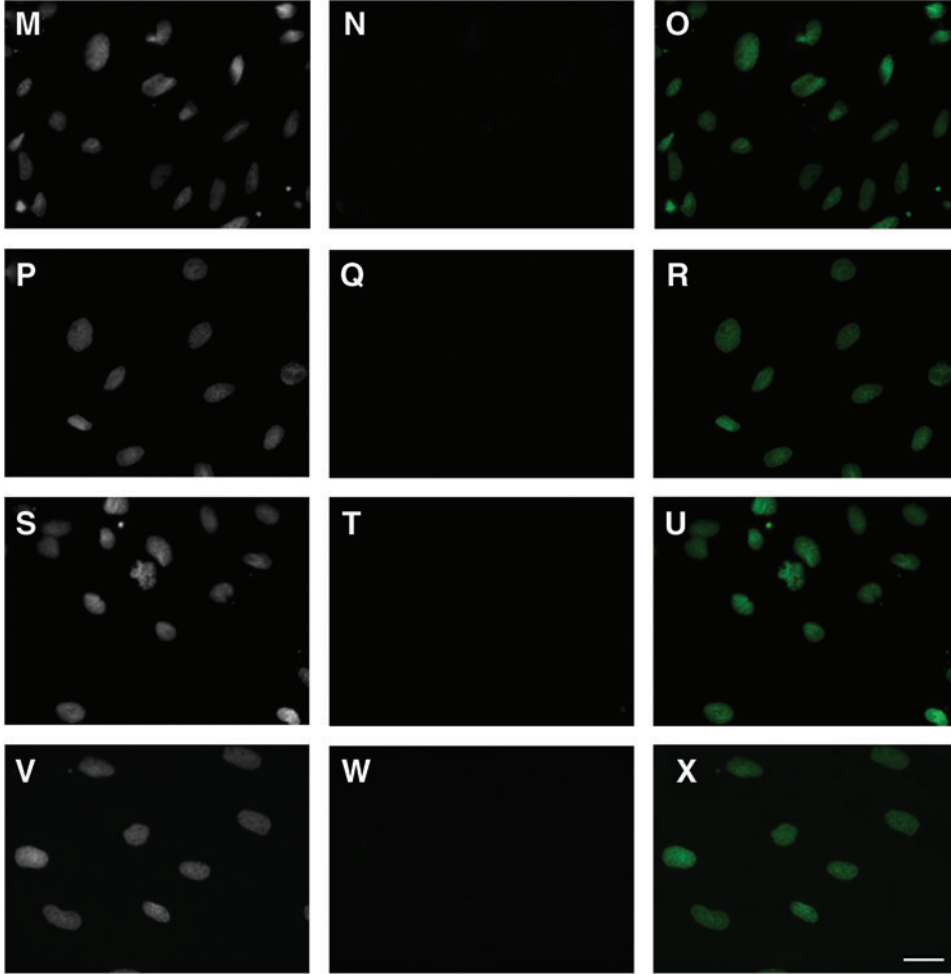


Supplementary Data

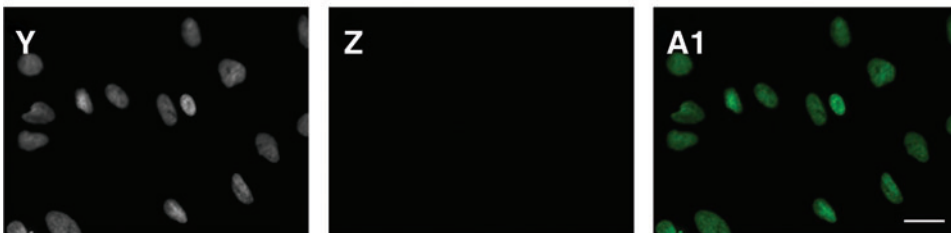


SUPPLEMENTARY FIG. S1. (I) Osteoblastic and chondroblastic differentiation of ZFB1 cells and detection of lineage-specific markers by immunocytochemistry. **(A–C)** cells immunolabeled with chondroitin sulfate proteoglycans/Cspgs; **(D–F)** cells immunolabeled with collagen type II/Col2; **(G–I)** cells immunolabeled with osteopontin/Spp1; **(J–L)** cells immunolabeled with collagen type X/Col10. **(A, D, G, J)** cells labeled with DAPI; **(B, E, H, K)** cells labeled with Alexa 594 (secondary antibody); **(C, F, I, L)** merged images of DAPI (*green*) and Alexa 594 (*magenta*) for T3 (3 weeks treatment). **(II)** Untreated cultures of ZFB1 cells. **(M–O)** cells immunolabeled with chondroitin sulfate proteoglycans/Cspgs; **(P–R)** cells immunolabeled with collagen type II/Col2; **(S–U)** cells immunolabeled with osteopontin/Spp1; **(V, W, X)** cells immunolabeled with collagen type X/Col10. **(M, P, S, V)** cells labeled with DAPI; **(N, Q, T, W)** cells labeled with Alexa 594; **(O, R, U, X)** merged images of DAPI (*green*) and Alexa 594 (*magenta*) for T3 (Untreated). **(III)** Negative control. **(Y, Z, A1)** cells immunolabeled only with Alexa 594. **(Y)** cells labeled with DAPI; **(Z)** cells labeled with Alexa 594; **(A1)** merged images of DAPI (*green*) and Alexa 594 (*magenta*) for T3. Scale bar is 10 μm .

II



III



SUPPLEMENTARY FIG. S1. (Continued)