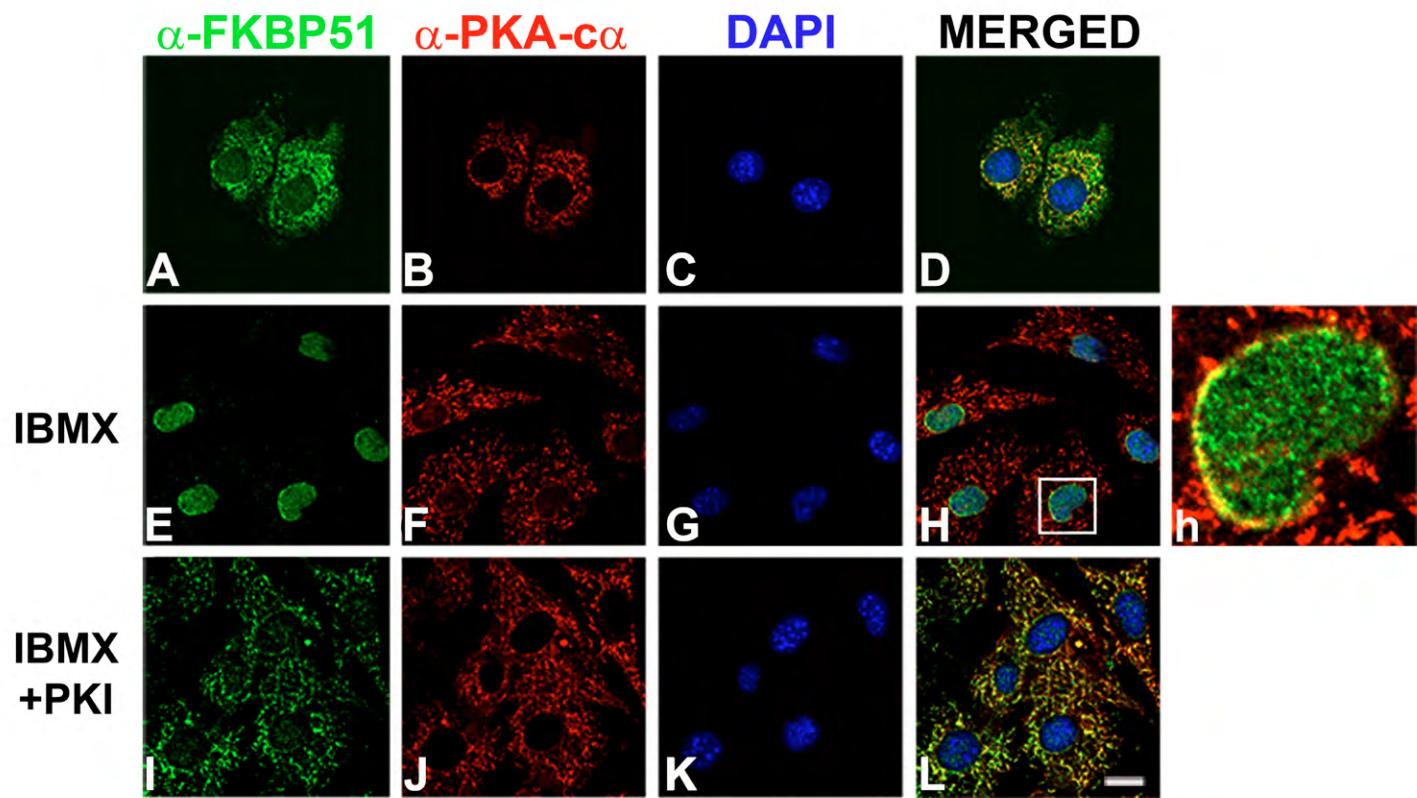


**Fig. S1.** FKBP51 rapidly shuttles from mitochondria to the nucleus when 3T3-L1 preadipocytes are induced to differentiate. 3T3-L1 cells grown on coverslips were induced to differentiate for the indicated period of time and subcellular localization of FKBP51, and Tom20 were assessed by IIF and confocal microscopy. Nuclei were counterstained with DAPI and mitochondria with MitoTracker. Arrows indicate nucleoli (D). Images are representative of three independent experiments. Scale bar: 3  $\mu$ m



**Fig. S2.** 3T3-L1 cells were grown on coverslips and incubated in the absence (A-D), the presence of 520  $\mu$ M IBMX (E-H, h) or IBMX and 0.5  $\mu$ M PKI (I-L) for 24 h, and then subjected to IIF analysis using anti- $\alpha$ -FKBP51 and anti-PKAc- $\alpha$ . Nuclei were counterstained with DAPI. Results are representative of four independent experiments. Scale bar: 10  $\mu$ m.