

SUPPORTING INFORMATION for

Sortase-Tag Expressed Protein Ligation (STEPL): combining protein purification and site-specific bioconjugation into a single step.

Robert Warden-Rothman¹, Ilaria Caturegli¹, Vladimir Popik², and Andrew Tsourkas^{1,}*

¹Department of Bioengineering, University of Pennsylvania, Philadelphia, PA 19104

²Department of Chemistry, University of Georgia, Athens, GA 30602

SUPPLEMENTAL FIGURE:

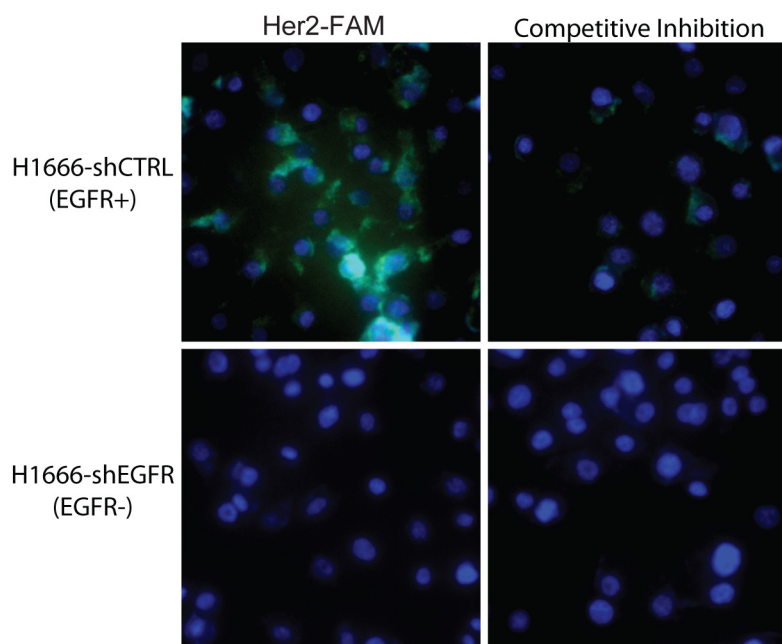


Figure S1. Functional evaluation of the EGFR affibody-FAM conjugate. (A) EGFR-positive and -negative cells were incubated with EGFR-targeted affibodies that were conjugated to FAM (green) using the STEPL system. Cells were also stained with Hoechst 33342 (nuclear stain, blue).