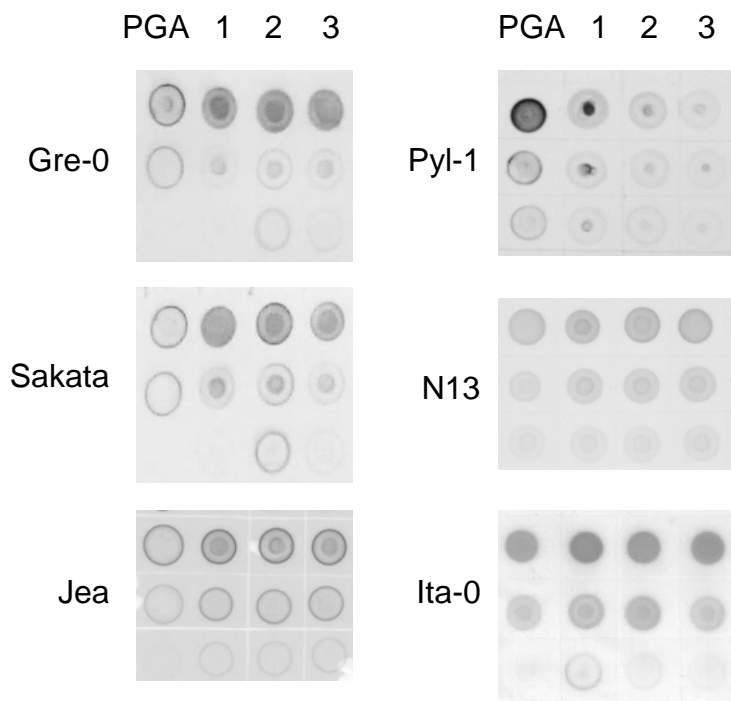
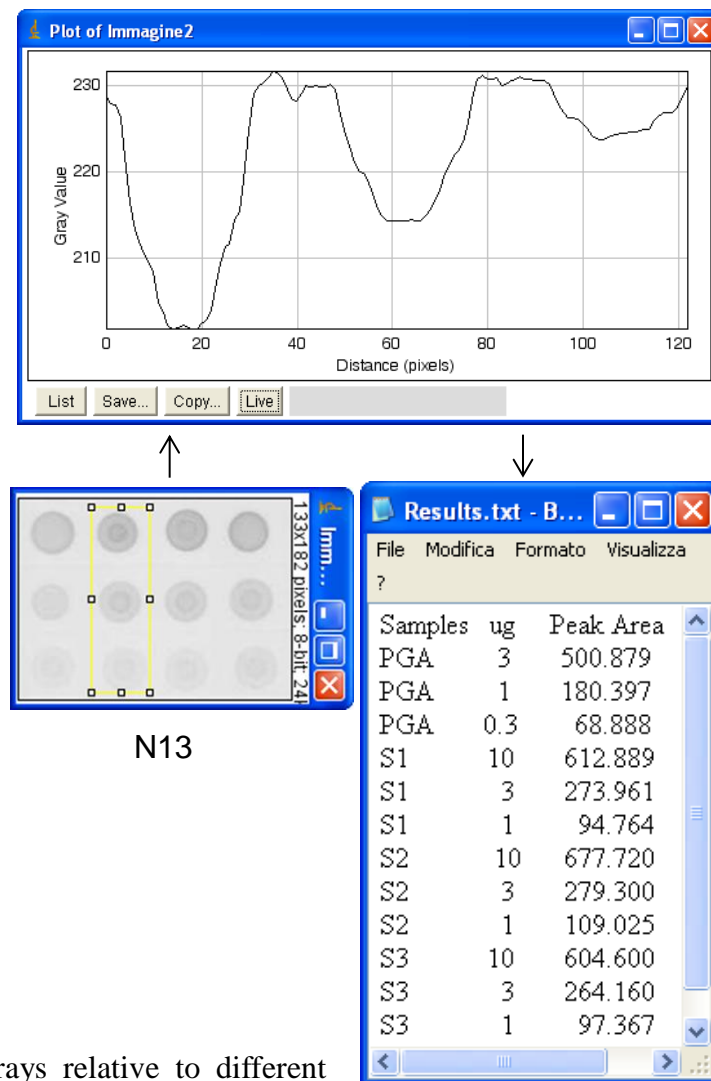


**A****B**

**Figure S4 ChASS arrays using PAM1 antibodies.** A) Representative arrays relative to different *Arabidopsis* accessions are shown. The numbers represent three independent replicates for each accession. ChASS fractions were applied as 1  $\mu\text{L}$  aliquots in a 3-fold dilution series (10, 3, and 1  $\mu\text{g}/\mu\text{L}$ ). As standard, PGA was also applied as 1  $\mu\text{L}$  aliquots in a dilution series (3, 1 and 0.3  $\mu\text{g}/\mu\text{L}$ ). B) Schematic representation of quantification steps of PAM1 signal, using the immunoblot for the N13 accession (A). ImageJ software was used to quantify spot signals. The optical density of each spot was quantified as peak area and defined as PAM1 signal.