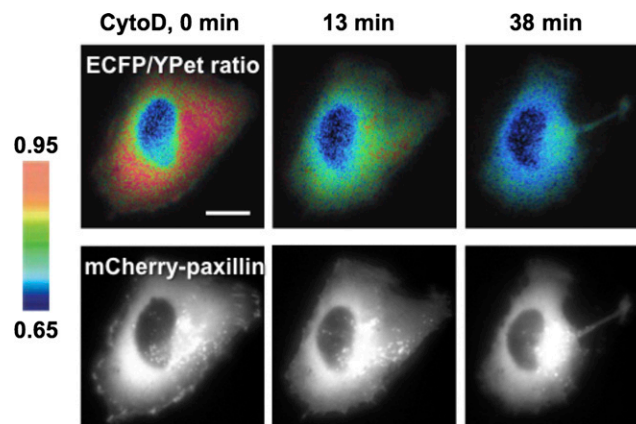


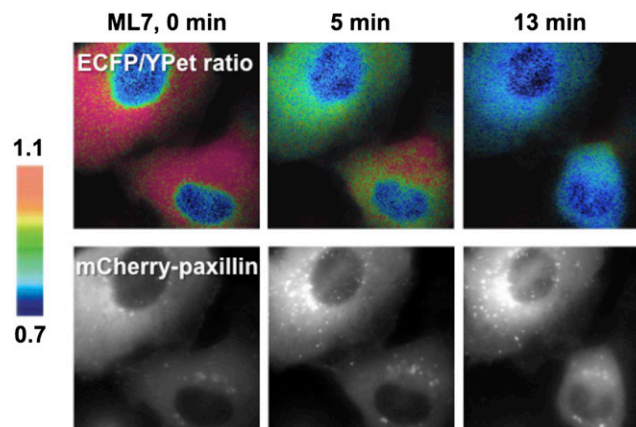
Supporting Information

Seong et al. 10.1073/pnas.1307405110



Movie S1. FAK activity and focal adhesion dynamics in response to cytochalasin D. Movie of the ECFP/YPet ratio images of FAK biosensor and mCherry-tagged paxillin in H1080 cells seeded on FN-coated glass surface with the treatment of 1 μ M of cytochalasin D. The ECFP/YPet ratio ranges from 0.6 to 1.0.

[Movie S1](#)



Movie S2. FAK activity and focal adhesion dynamics in response to ML7. Movie of the ECFP/YPet ratio images of FAK biosensor and mCherry-tagged paxillin in H1080 cells seeded on FN-coated glass surface with the treatment of 10 μ M of ML7. The ECFP/YPet ratio ranges from 0.65 to 1.25.

[Movie S2](#)

Other Supporting Information Files

[SI Appendix \(PDF\)](#)