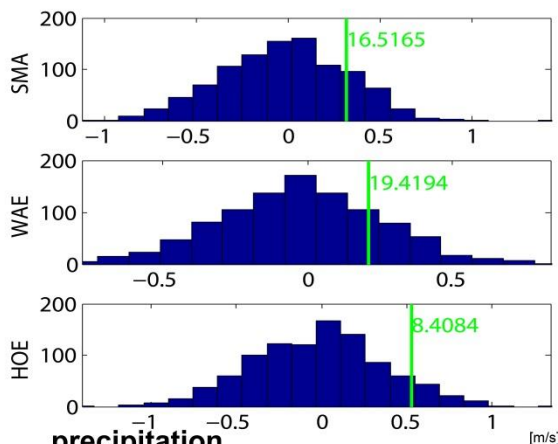


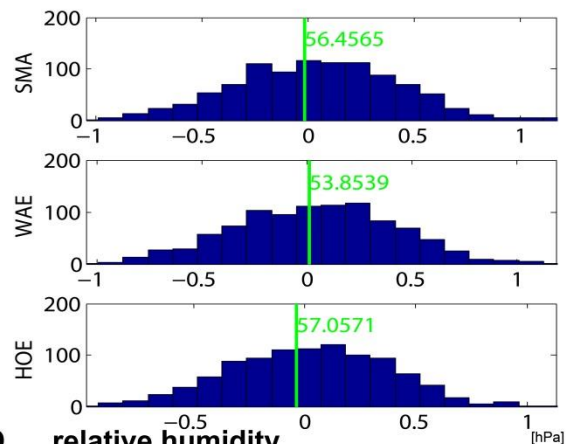
## Supplemental Figure S5

Histogram of the mean deviation from 2 days prior to the bleeding event from a Monte Carlo simulation (random selection of 511 days within the same time period) with 1000 re-samplings, assuming that no relationship between SAH and temperature exists. The green line corresponds to the observed mean given in Supplemental Figure 4 and the blue distribution results from the Monte Carlo simulation. The P-value gives the number of Monte Carlo member to the right of the observed value.

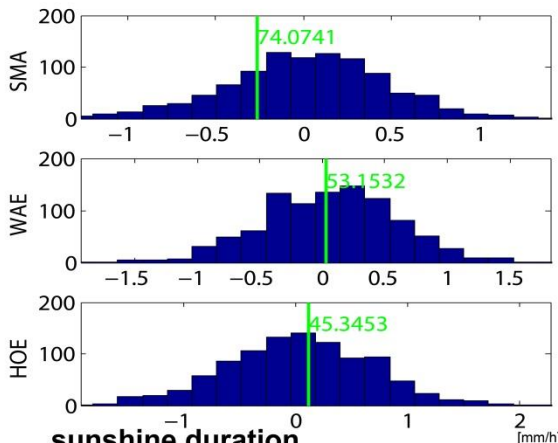
### A gusts



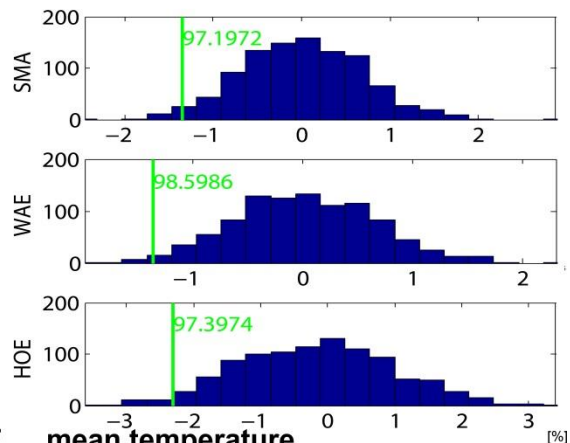
### B surface pressure



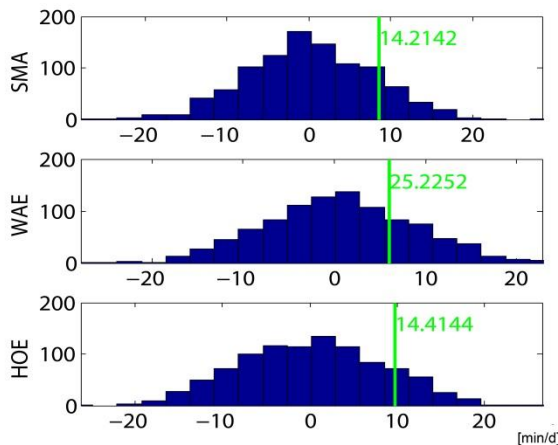
### C precipitation



### D relative humidity



### E sunshine duration



### F mean temperature

