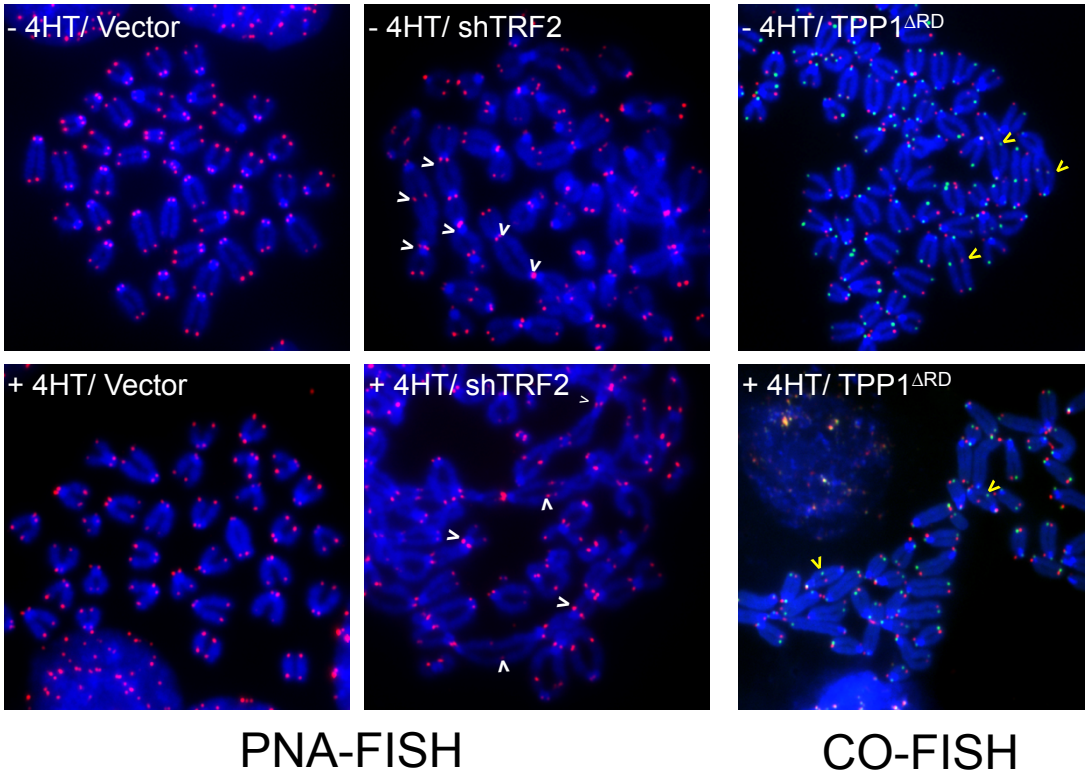
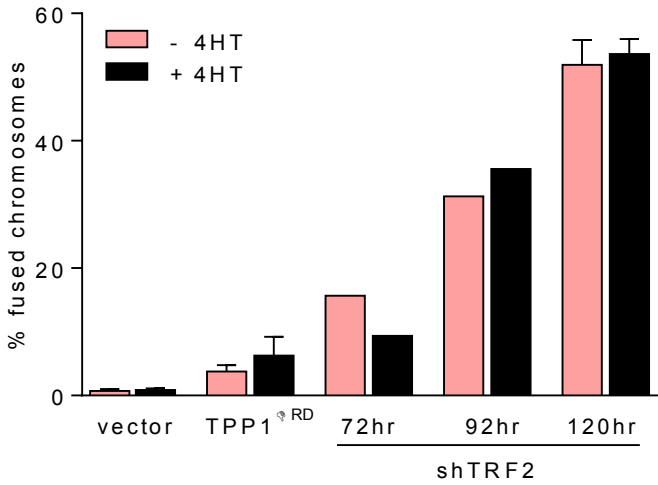


A

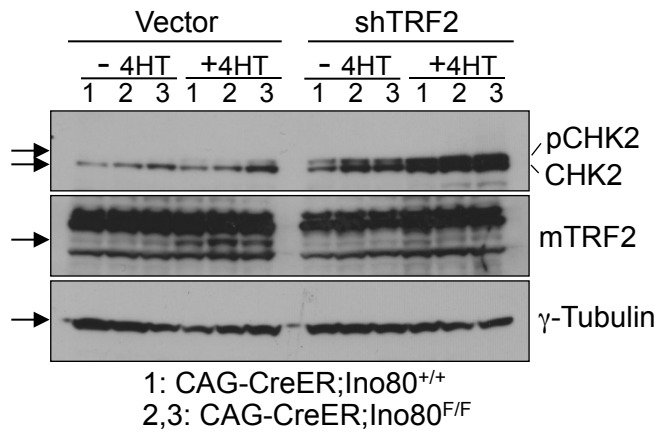
CAG-CreER; Ino80^{F/F}



B



C



Supplementary Figure 5 *mIno80* deletion does not impact upon C-NHEJ or A-NHEJ mediated DNA repair. **(A)** Representative metaphase spreads of telomere PNA-FISH and CO-FISH images showing chromosome fusions in *CAG-CreER; mIno80^{F/F}* MEFs with or without 4-HT treatment, 120hr after expressing TPP1^{ΔRD} or shRNA against TRF2 to induce dysfunctional telomeres. White arrowheads point to C-NHEJ-mediated chromosome fusions. Yellow arrowheads point to A-NHEJ mediated chromosome fusions. **(B)** Quantification of fused chromosomes in panel (A) at different time (hr) of infection with shTRF2 or at 120hr after expressing TPP1^{ΔRD}. Error bars represent s.e.m. **(C)** Immunoblotting for TRF2, total and phosphor-CHEK2 and γ -tubulin in TRF2 depleted *CAG-CreER; mIno80^{+/+}* MEFs (lane 1) and *CAG-CreER; mIno80^{F/F}* MEFs (lanes 2, 3) with or without 4-HT treatment. Arrows point to the indicated proteins.