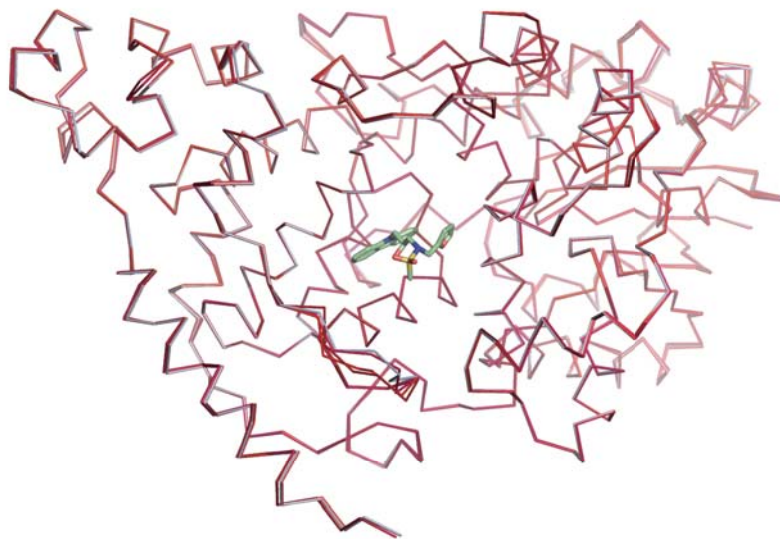


Supplementary Information, Figure S1

A



B

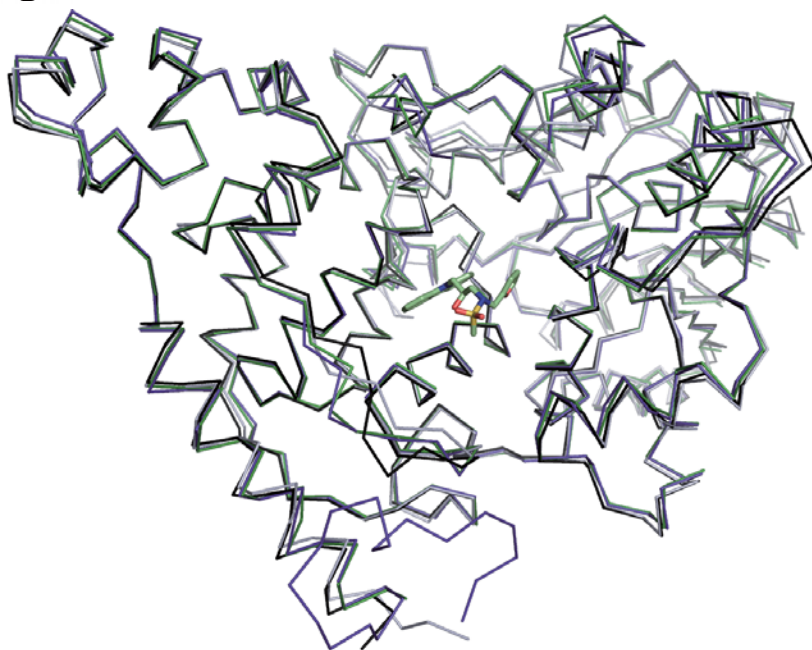


Figure S1. Superposition analyses of murine CRY2 PHR domain structures. **(A)** The four molecules in the asymmetric unit of the CRY2-KL001 complex are superimposed and shown in different colors. KL001 is shown in sticks (green). **(B)** The crystal structure of murine CRY2 in the apo (green), FAD-bound (black, FAD omitted), FBXL3-complexed (purple, FBXL3-Skp1 omitted) forms are superimposed with that of the KL001-bound form (gray). KL001 is shown in sticks.