

Supplementary Information, Figure S5

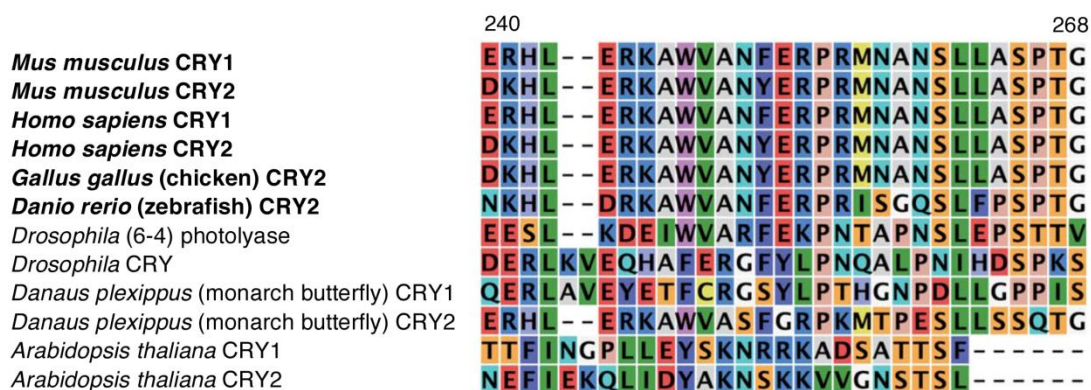


Figure S5. Sequence alignment of cryptochrome phosphate-binding loop. Phosphate-binding loop (amino acids mCRY2 240-268) sequence alignment between vertebrates (bold) and other organisms. *D. plexippus* CRY1 (Type I cryptochrome) is phylogenetically closer to *D. melanogaster* CRY, where as *D. plexippus* CRY2 (Type II cryptochrome) is phylogenetically closer to vertebrate CRY.