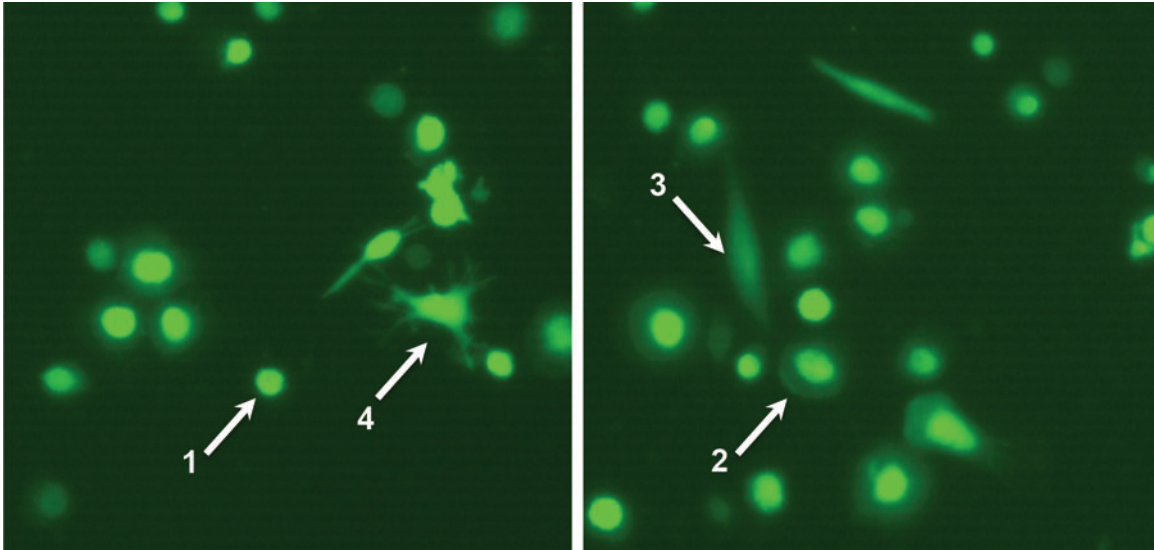


Supplementary Data



SUPPLEMENTARY FIG. S1. Adherent cells of heterogeneous shape were isolated from human peripheral blood and transduced with Sendai virus carrying GFP vector for 3 days. Cells exhibit various morphologies such as (1) spherical, (2) fried-egg-shaped, (3) spindle-shaped, and (4) stellar-shaped, presumably corresponding to monocytes, macrophages, fibrocytes, and dendritic cells, respectively.