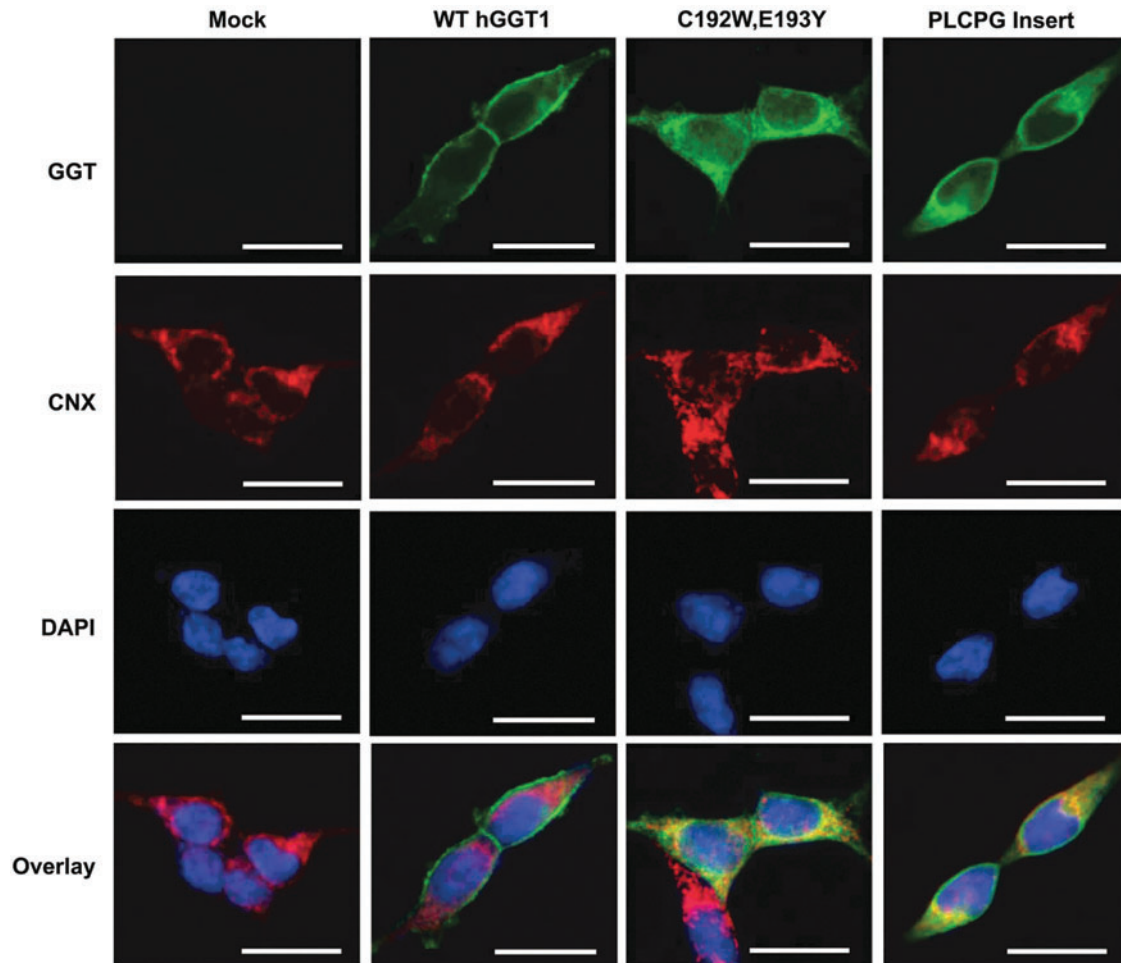


## Supplementary Data



**SUPPLEMENTARY FIG. S1. hGGT1 CX<sub>3</sub>C mutants mislocalize to the endoplasmic reticulum (ER).** HEK293T cells transfected with wild-type *hGGT1*, *hGGT1* (C192W;E193Y), or *hGGT1* (C192\_E193insPLCPG) cDNA expression constructs were grown on coverslips and then fixed and processed for indirect immunofluorescence, using the GGT129 antibody (GGT, green) and an antibody against the ER marker, calnexin (CNX, red). Nuclei were stained with DAPI (blue). Areas of overlapping GGT129 and calnexin immunofluorescence appear yellow in the overlay panels. Scale bars = 20  $\mu$ m. hGGT1, human  $\gamma$ -glutamyltranspeptidase 1.