

Table S1. Derogatis Sexual Functioning Interview (DSFI)

Global Sexual Satisfaction Index (GSSI)

Record your personal evaluation of how satisfying your sexual relationship is.		
Make your evaluation by placing a check in the appropriate box that best describes your present sexual relationship.		
<input type="checkbox"/>	8	Could not be better
<input type="checkbox"/>	7	Excellent
<input type="checkbox"/>	6	Good
<input type="checkbox"/>	5	Above average
<input type="checkbox"/>	4	Adequate
<input type="checkbox"/>	3	Somewhat inadequate
<input type="checkbox"/>	2	Poor
<input type="checkbox"/>	1	Highly Inadequate
<input type="checkbox"/>	0	Could not be worse

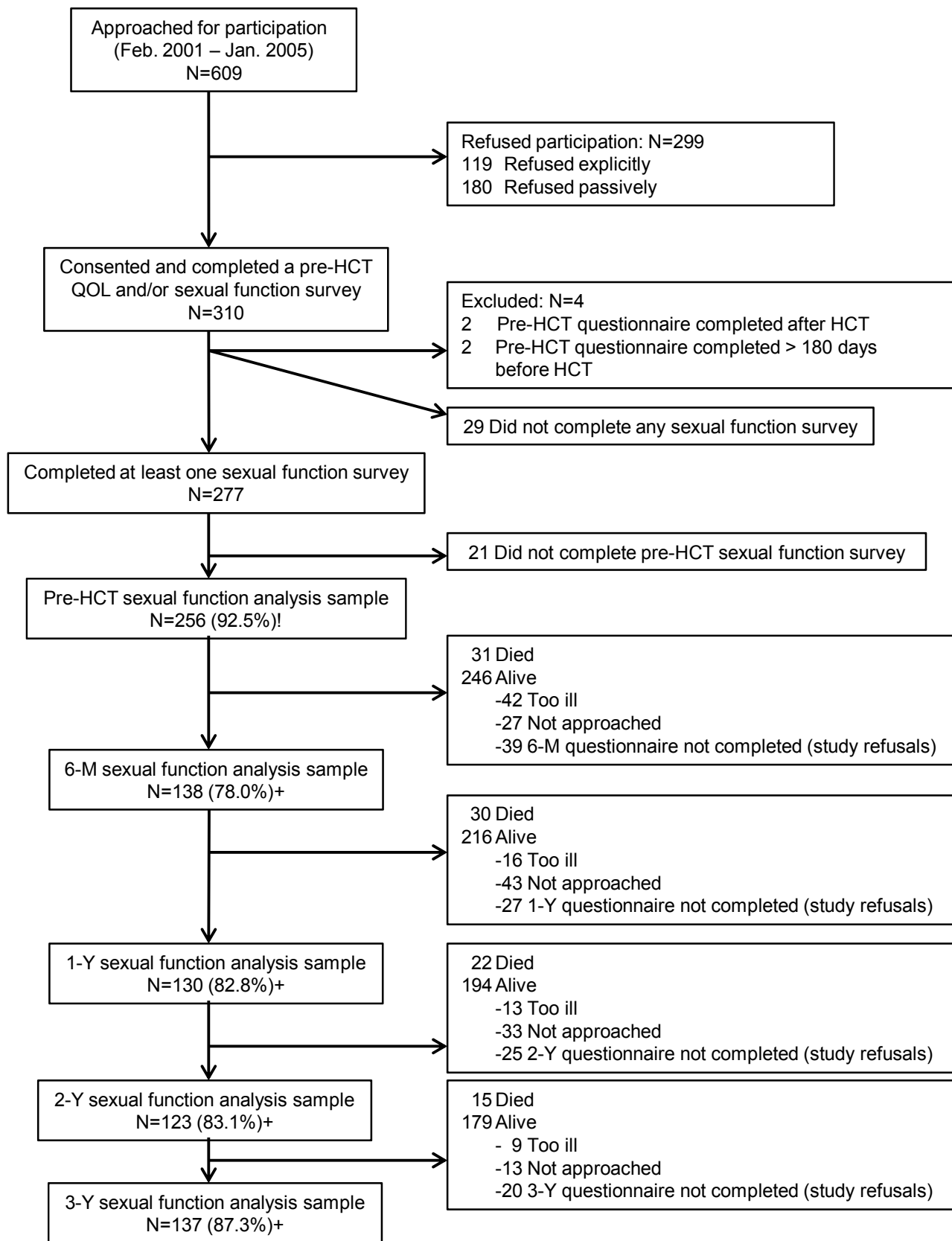
Table S2. DISF-SR (Female Version)

SEXUAL COGNITION/ FANTASY
DURING THE PAST 30 DAYS, HOW OFTEN HAVE YOU HAD THOUGHTS, DREAMS OR FANTASIES ABOUT
A sexually attractive person
Erotic parts of a man's body
Erotic or romantic situations
Caressing, touching, undressing, or foreplay
Sexual intercourse, oral sex, touching to orgasm
SEXUAL AROUSAL
DURING THE PAST 30 DAYS, HOW OFTEN DID YOU HAVE THE FOLLOWING EXPERIENCE?
Feel sexually aroused while alone
Actively seek sexual satisfaction
Feel sexually aroused with a partner
SEXUAL BEHAVIOR/ EXPERIENCES
DURING THE PAST 30 DAYS, HOW OFTEN DID YOU ENGAGE IN THE FOLLOWING SEXUAL ACTIVITIES?
Reading or viewing romantic or erotic books or stories
Masturbation
Casual kissing and petting
Sexual foreplay
Sexual intercourse, oral sex, etc.
ORGASM
DURING THE PAST 30 DAYS, HOW SATISFIED HAVE YOU BEEN WITH THE FOLLOWING
Ability to have an orgasm
Intensity of orgasm
Ability to have multiple orgasms
Feelings of closeness/ togetherness with partner
Sense of control (timing) of orgasm
Feeling a sense of relaxation/ well-being after orgasm
DRIVE & RELATIONSHIP
Ideal frequency of sexual intercourse with partner of choice
How interested in sex?
How satisfied with personal relationship with sexual partner?
Quality of current sexual functioning?
8 = 4 or more per day; 7 = 2 or 3 per day; 6 = 1 per day; 5 = 4 to 6 per week; 4 = 2 or 3 per week; 3 = 1 per week; 2 = 1 or 2 per month; 1 = less than 1 per month; 0 = not at all

Table S3. DISF-SR (Male Version)

SEXUAL COGNITION/ FANTASY
DURING THE PAST 30 DAYS, HOW OFTEN HAVE YOU HAD THOUGHTS, DREAMS OR FANTASIES ABOUT
A sexually attractive person
Erotic parts of a woman's body
Erotic or romantic situations
Caressing, touching, undressing, or foreplay
Sexual intercourse, oral sex, touching to orgasm
SEXUAL AROUSAL
DURING THE PAST 30 DAYS, HOW OFTEN DID YOU HAVE THE FOLLOWING EXPERIENCE?
A full erection upon awakening
A full erection during a sexual fantasy or daydream
A full erection while looking at a sexually arousing person, movie or picture
A full erection during masturbation
A full erection throughout the phases of a normal sexual response cycle
SEXUAL BEHAVIOR/ EXPERIENCES
DURING THE PAST 30 DAYS, HOW OFTEN DID YOU ENGAGE IN THE FOLLOWING SEXUAL ACTIVITIES?
Reading or viewing romantic or erotic books or stories
Masturbation
Casual kissing and petting
Sexual foreplay
Sexual intercourse, oral sex, etc.
ORGASM
DURING THE PAST 30 DAYS, HOW SATISFIED HAVE YOU BEEN WITH THE FOLLOWING
Ability to have an orgasm
Intensity of orgasm
Length or duration of orgasm
Amount of seminal fluid that you ejaculate
Sense of control (timing) of orgasm
Feeling a sense of relaxation/ well-being after orgasm
DRIVE/ RELATIONSHIP
Ideal frequency of sexual intercourse, with partner of your choice
How interested have you been in sex?
How satisfied have you been with your personal relationship with your sexual partner?
What would represent the best description of the quality of your current sexual functioning?
8 = 4 or more per day; 7 = 2 or 3 per day; 6 = 1 per day; 5 = 4 to 6 per week; 4 = 2 or 3 per week; 3 = 1 per week; 2 = 1 or 2 per month; 1 = less than 1 per month; 0 = not at all

Figure S1. Flow chart of study enrollment and participation.



! Response rate at pre-HCT = 256/277 = 92.5%

+ Response rate post HCT = # in analysis / (# Alive - # Too ill - # Not approached) x 100

Figure S2. Predicted sexual function domain scores and total sexual function at age 34 years (men: dashed lines; women, solid lines; $\pm 95\%$ confidence intervals), compared to the median sexual function scores from a normative community sample (Men: \square ; women: \circ ; mean age 34 years).

